

FOR LEASE

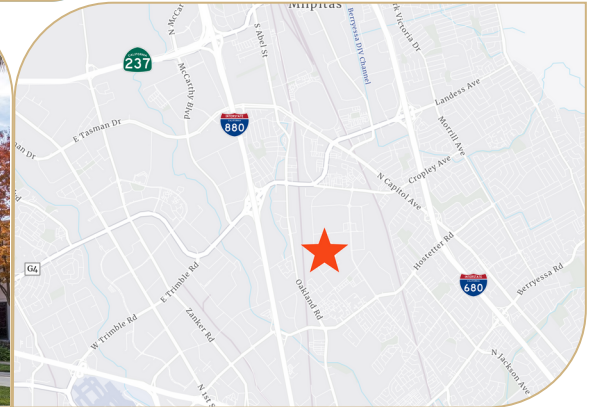
Owned and Operated by



CORPORATE COURT

2040 Corporate Court, San Jose, CA

±19,151 SF R&D/Industrial



LEASING INFO & CONTACT

Ed Hofer, SIOR

(408) 482-4182 / ed.hofer@colliers.com / Lic. 00923494

Dave Schmidt, SIOR

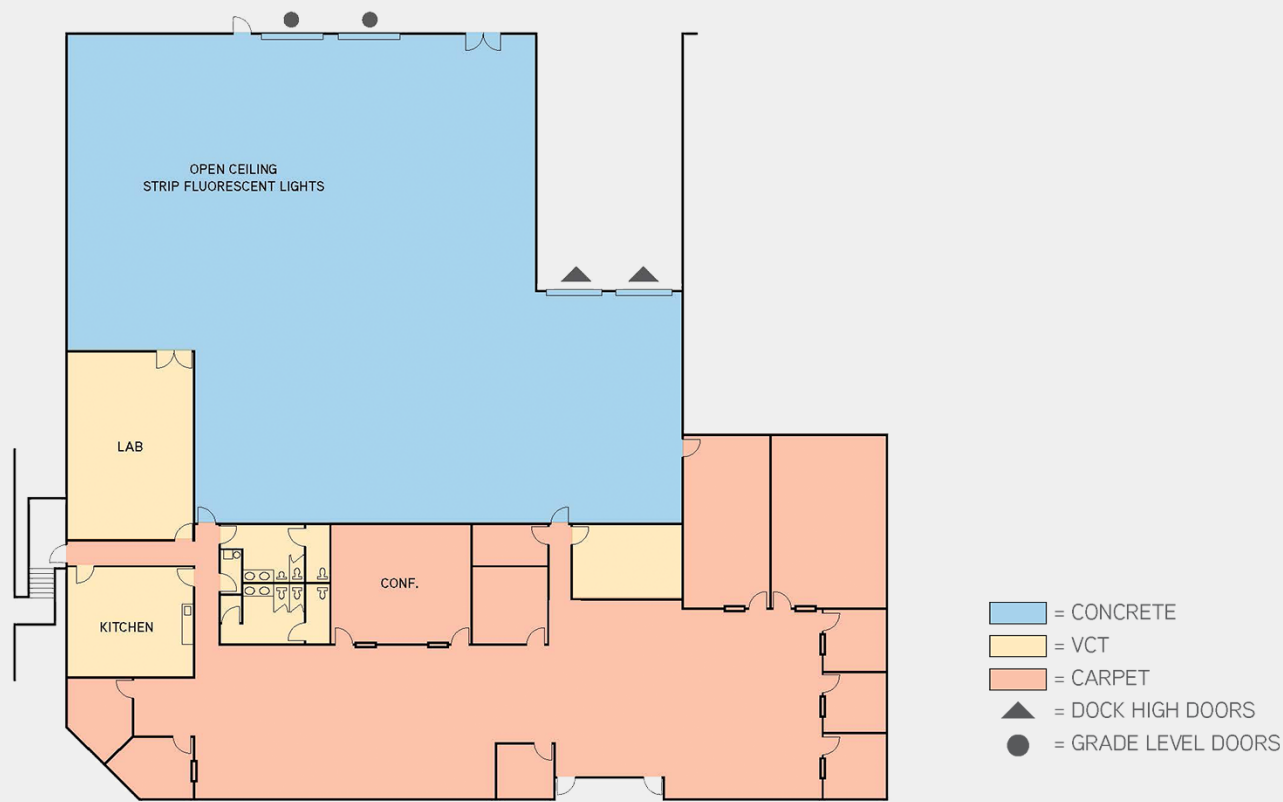
(408) 316-6611 / david.schmidt@colliers.com / Lic. 00821451

Emerson Hofer

(408) 472-9129 / emerson.hofer@colliers.com / Lic. 02065843

Colliers

This is not an offer or acceptance of an offer to lease space. A lease will only be offered or made in a written agreement signed by landlord. No representation or warranty of any kind is made by landlord unless set forth in a written definitive lease executed by the landlord.



FEATURES

Available space	±19,151 SF
Build out	±40% Office area ±60% Open ceiling whse/mfg with HVAC
Parking	±3.8/1,000 parking
Clear height	±18' - 22'
Loading	2 Grade level doors 2 Dock high doors
Power	400 amps @ 277/480 volts
Location	Convenient Access to I-880 & I-680

