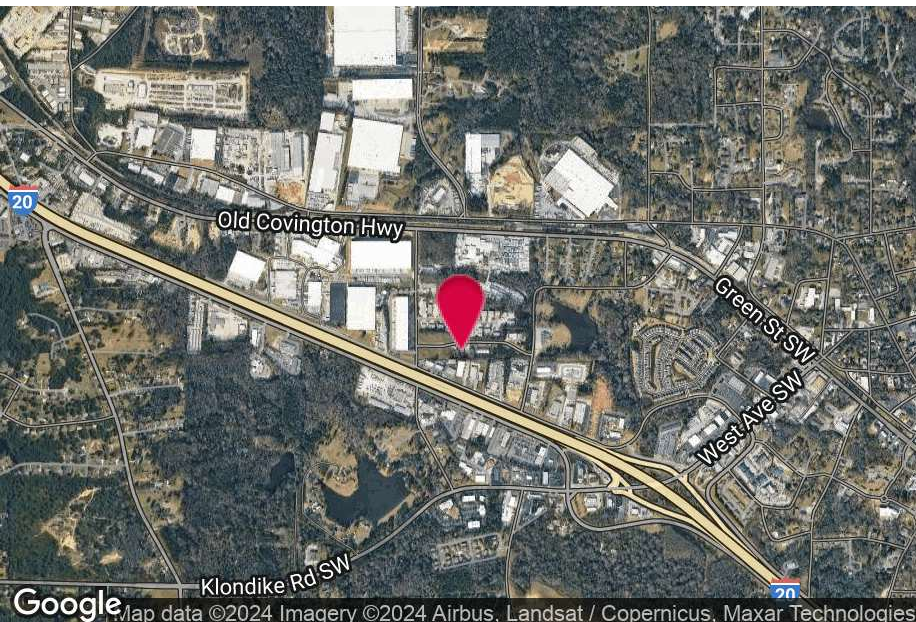


FOR LEASE

1531 DOGWOOD DRIVE

Conyers, GA 30012

4,020+/- SF DEAD STORAGE



PROPERTY HIGHLIGHTS

- Dead Storage
- 1 Dock Door
- 1 Ramp
- Short Term Lease Available

BUILDING SUMMARY

Available SF	4,020 SF
Building Size	16,080 SF
Zoning	M-1

Tommy Barrow

Advisor

tbarrow@kingindustrial.com

210.394.9943

Ed Smith, CCIM

Vice President

esmith@kingindustrial.com

404.942.2082

King Industrial
Realty, Inc.

CORFAC
INTERNATIONAL

Industrial • Commercial • Investment

DOCK DOOR & RAMP

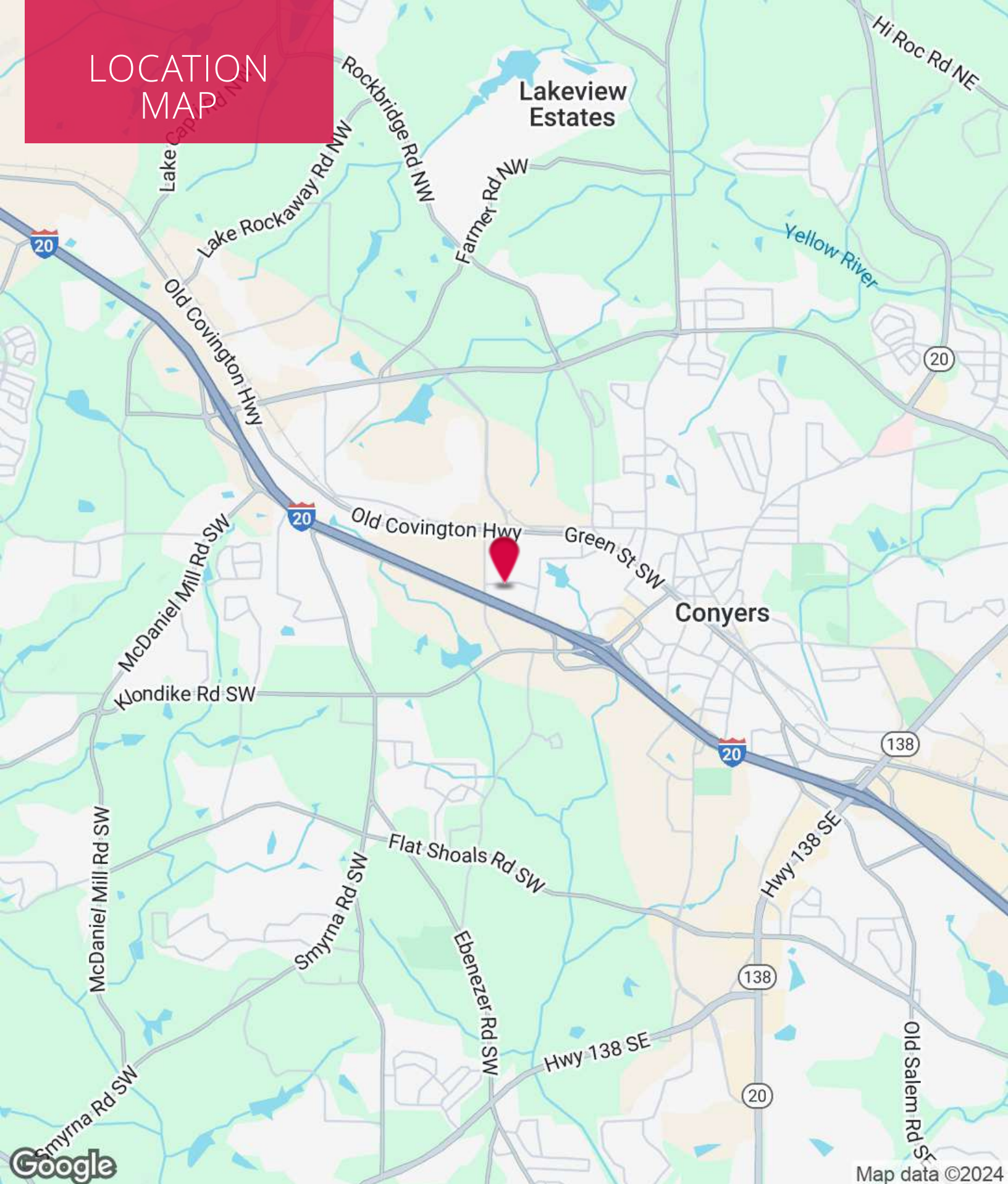


Tommy Barrow
Advisor
tbarrow@kingindustrial.com
210.394.9943

Ed Smith, CCIM
Vice President
esmith@kingindustrial.com
404.942.2082

King Industrial
Realty, Inc. **CORFAC**
INTERNATIONAL
Industrial • Commercial • Investment

LOCATION MAP



Map data ©2024

Tommy Barrow

Advisor
tbarrow@kingindustrial.com
210.394.9943

Ed Smith, CCIM

Vice President
esmith@kingindustrial.com
404.942.2082

King Industrial
Realty, Inc.

CORFAC
INTERNATIONAL

Industrial • Commercial • Investment