



FOR LEASE CLASSIC LAKEWOOD STRIP SHOPPING CENTER

5572 SOUTH STREET | LAKEWOOD, CA 90713

MICHAEL NITTI

CA REAL ESTATE LIC #01896051
949.245.1767
MITTI@CBM1.COM

1517 S. SEPULVEDA BLVD | LOS ANGELES, CA 90025
CBM1.COM



CLASSIC LAKEWOOD STRIP SHOPPING CENTER

5572 SOUTH STREET | LAKEWOOD, CA 90713



FEATURES + AMENITIES

- APPROX. 840 SQFT + APPROX. 2,250 SQFT UNITS AVAILABLE
- EXCEPTIONAL LAKEWOOD LOCATION AT THE HARD CORNER OF BELLFLOWER + SOUTH
- HIGHLY PROMINENT MONUMENT SIGNAGE
- IDEAL LOCATION FOR: QUICK SERVE PIZZA/DELIVERY, DESSERT OPERATOR, QUASI-MEDICAL USE, BEAUTY SPA, CELLULAR, TAX SERVICES, ETC.
- CENTRALIZED AND ESTABLISHED LAKEWOOD CORRIDOR SITUATED JUST SOUTH OF THE 91 FRWY & JUST WEST OF THE 605 FRWY
- HIGH TRAFFICKED INTERSECTION AND JUST MINUTES DRIVE FROM LAKEWOOD MALL



NEIGHBORING RETAILERS



DEMOGRAPHICS SNAPSHOT	1-MILE	3-MILE	5-MILE
POPULATION	29,127	255,995	689,453
AVG HH INCOME	\$97,687	\$87,844	\$90,518

EXCLUSIVELY REPRESENTED BY

MICHAEL NITTI

CA REAL ESTATE LIC #01896051

949.245.1767

MITTI@CBM1.COM

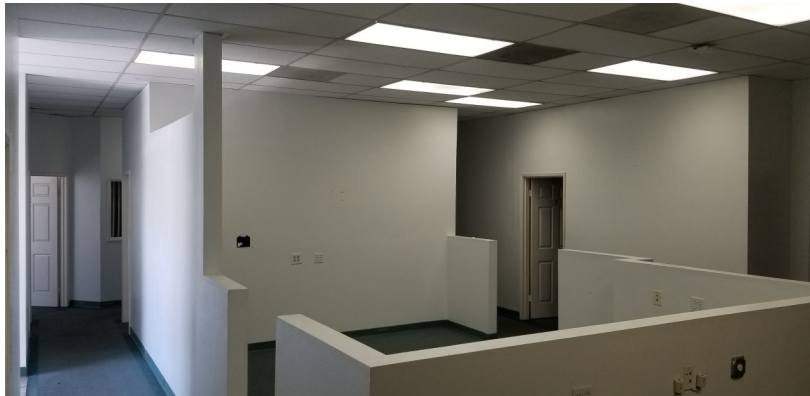
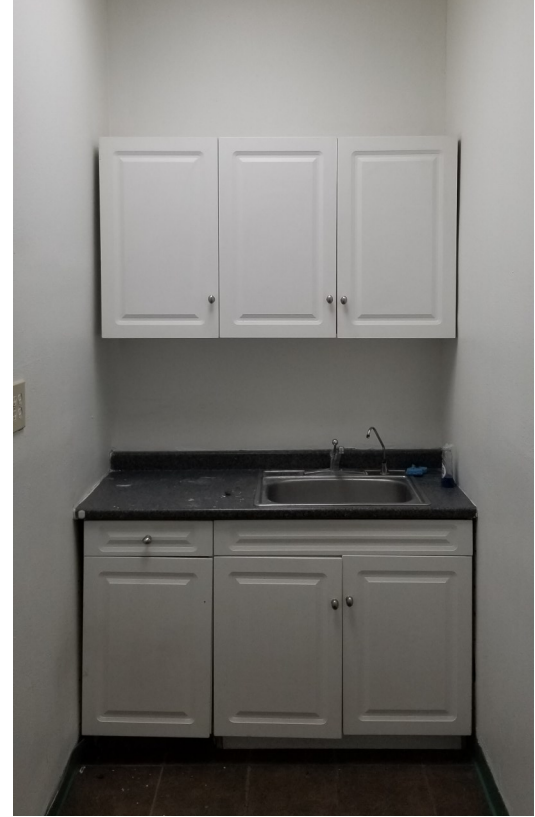
INTERIOR PHOTOS | UNIT 5564

5572 SOUTH STREET | LAKEWOOD, CA 90713



INTERIOR PHOTOS | UNIT 5572

5572 SOUTH STREET | LAKEWOOD, CA 90713



AERIAL PHOTO

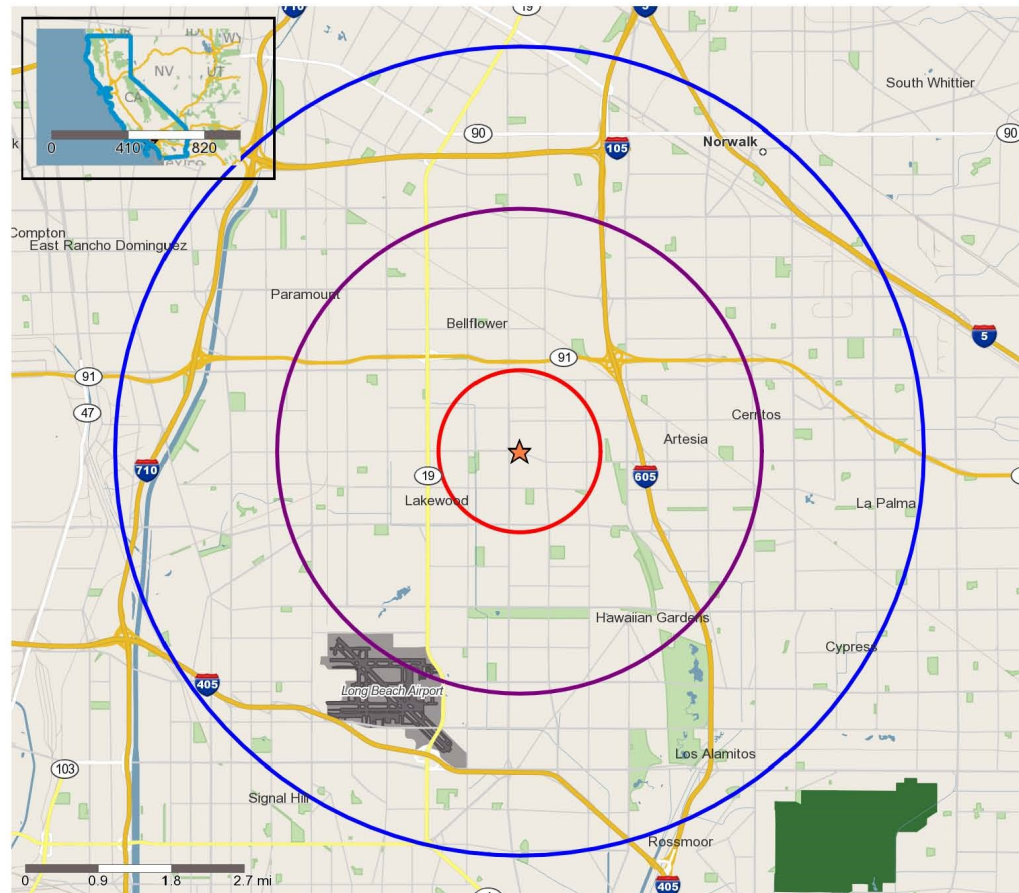
5572 SOUTH STREET | LAKEWOOD, CA 90713



DEMOGRAPHICS

5572 SOUTH STREET | LAKEWOOD, CA 90713

	1 mile(s)	3 mile(s)	5 mile(s)
Population: 2018A			
Total Population	29,127	255,995	689,453
Female Population	51.50%	51.51%	51.39%
Male Population	48.50%	48.49%	48.61%
Population Density	9,270	9,053	8,777
Population Median Age	39.1	36.7	35.8
Employed Civilian Population 16+			
Total	14,547	119,795	318,806
% White Collar	65.8%	60.4%	58.9%
% Blue Collar	34.2%	39.6%	41.1%
Total Q1 2019 Employees			
Total	7,057	77,012	245,020
Total Q1 2019 Establishments*			
Total	884	7,881	21,404
Population Growth 2000-2010	2.94%	2.08%	1.89%
Population Growth 2018A-2023	0.27%	-0.24%	-0.43%
Income: 2018A			
Average Household Income	\$97,687	\$87,844	\$90,518
Median Household Income	\$79,592	\$68,928	\$68,936
Per Capita Income	\$33,568	\$28,116	\$27,806
Avg Income Growth 2000-2010	43.44%	36.33%	37.32%
Avg Income Growth 2018A-2023	13.57%	13.86%	13.85%
Households: 2018A			
Households	9,962	81,467	210,833
Average Household Size	2.91	3.11	3.23
Hhld Growth 2000-2010	0.05%	0.41%	0.65%
Hhld Growth 2018A-2023	1.25%	0.78%	1.12%
Housing Units: 2018A			
Occupied Units	9,962	81,467	210,833
% Occupied Units	98.94%	98.31%	98.19%
% Vacant Housing Units	1.06%	1.69%	1.81%
Owner Occ Housing Growth 2000-2010	-0.84%	-0.57%	-0.12%
Owner Occ Housing Growth 2000-2023	-1.87%	-0.62%	0.18%
Owner Occ Housing Growth 2018A-2023	0.42%	0.53%	0.59%
Occ Housing Growth 2000-2010	0.05%	0.41%	0.65%
Occ Housing Growth 2010-2023	4.19%	3.99%	4.26%
Occ Housing Growth 2018A-2023	1.25%	0.78%	1.12%
Race and Ethnicity: 2018A			
% American Indian or Alaska Native Population	0.83%	0.77%	0.77%
% Asian Population	16.18%	17.76%	17.41%
% Black Population	8.74%	10.58%	9.50%
% Hawaiian or Pacific Islander Population	1.00%	0.93%	0.85%
% Multirace Population	6.16%	5.43%	5.09%
% Other Race Population	12.51%	18.52%	21.80%
% White Population	54.57%	46.00%	44.58%
% Hispanic Population	30.79%	42.54%	49.31%
% Non Hispanic Population	69.21%	57.46%	50.69%



Copyright 2006-2018 TomTom. All rights reserved. This material is proprietary and the subject of copyright protection, database right protection and other intellectual property rights owned by TomTom or its suppliers. The use of this material is subject to the terms of a license agreement. Any unauthorized copying or disclosure of this material will lead to criminal and civil liabilities.

- N Trade Areas (in miles) - 1
- N Trade Areas (in miles) - 3
- N Trade Areas (in miles) - 5