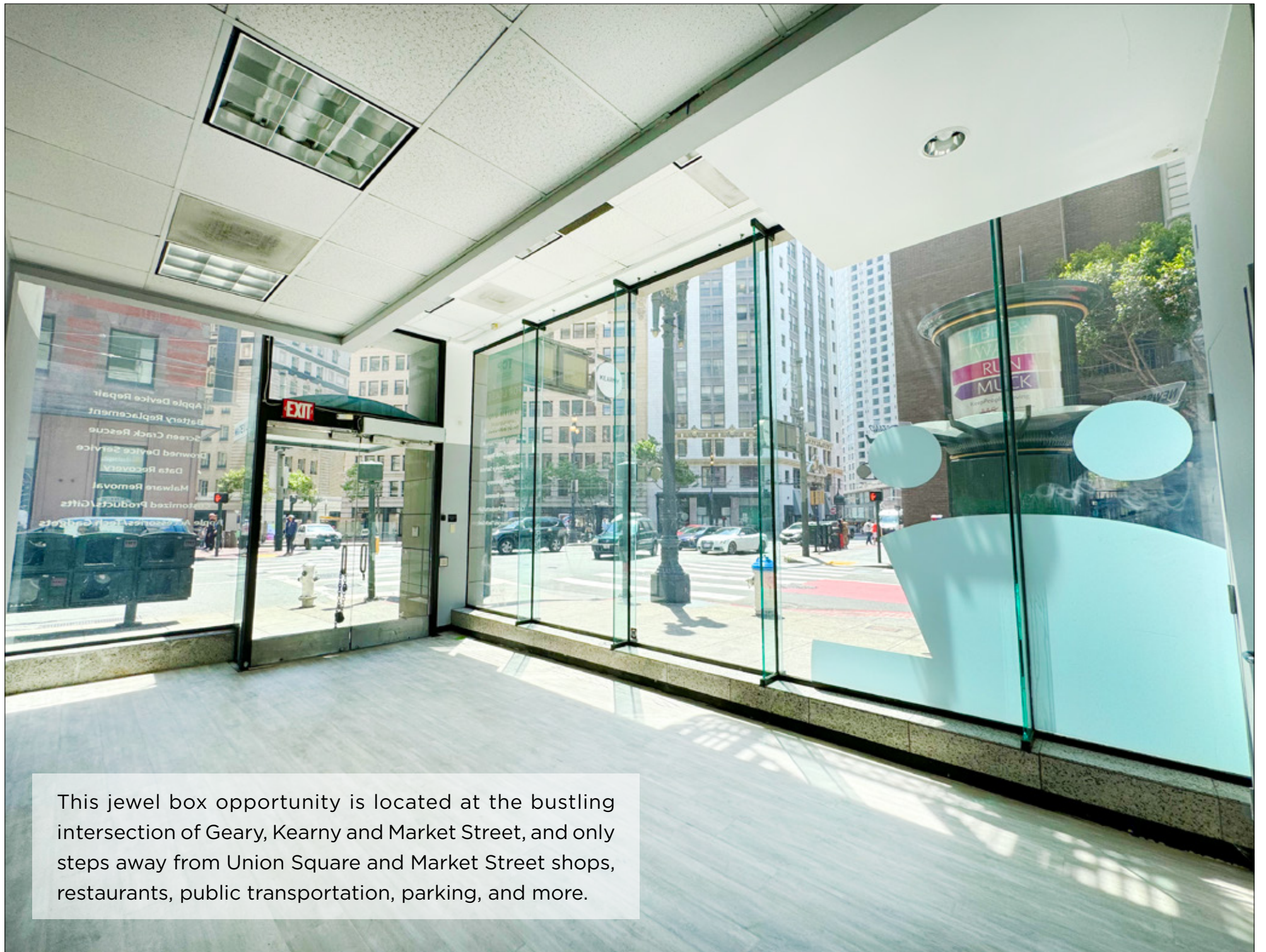




2 GEARY STREET | SAN FRANCISCO | CA

550 SF GROUND FLOOR UNION SQUARE RETAIL OPPORTUNITY

maven  
RETAIL



This jewel box opportunity is located at the bustling intersection of Geary, Kearny and Market Street, and only steps away from Union Square and Market Street shops, restaurants, public transportation, parking, and more.



---

Full-height glass windows wrap around Geary and Kearny, with a direct sight line to busy Market Street.

---

## FEATURES

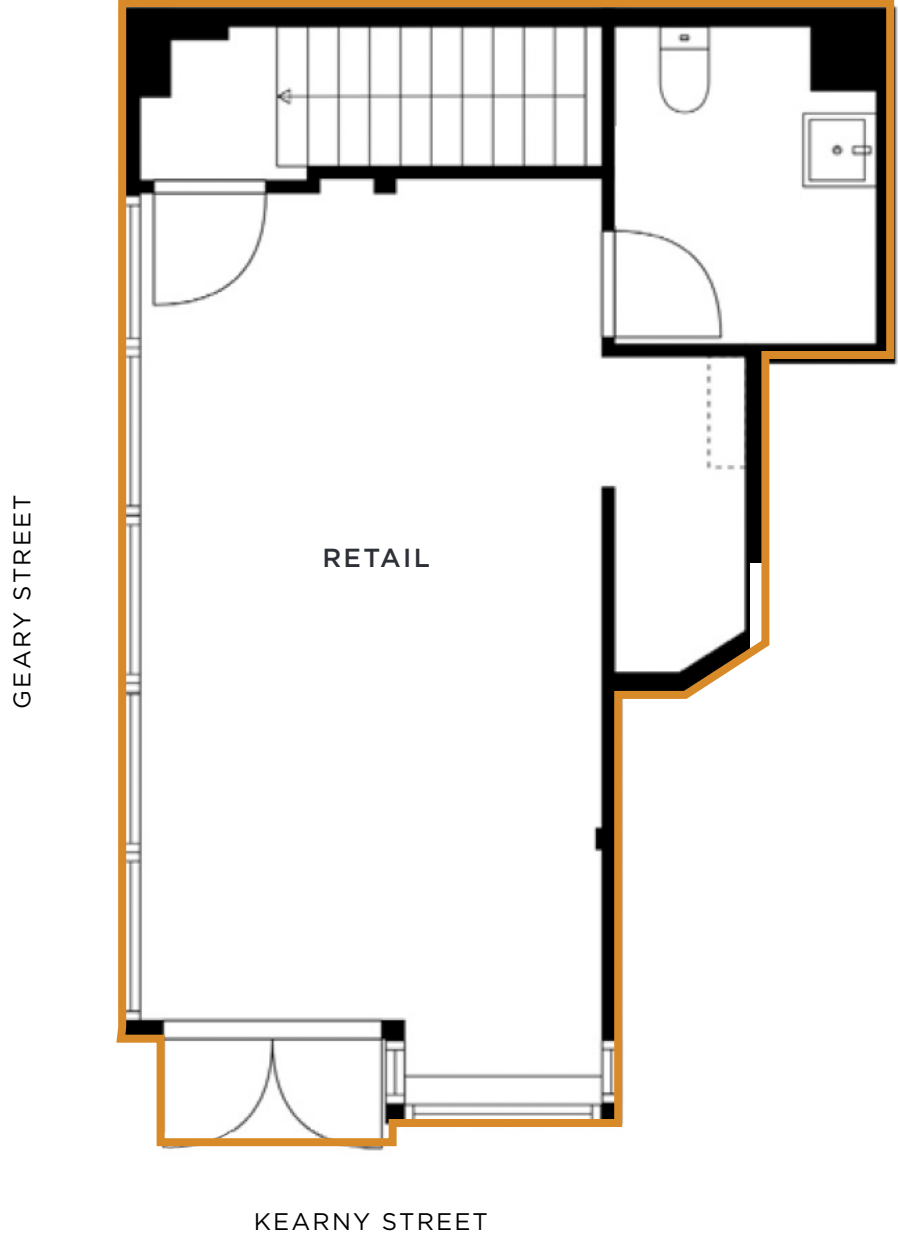
---

- 550 SF Ground Floor
- Highly visible corner location
- Floor to ceiling glass façade
- High vehicular and foot traffic
- Proximity to Union Square, World Class Hotels, parking and public transportation
- Potential to combine all four levels to create a single tenant building



# FLOOR PLAN

GROUND FLOOR



# NEIGHBORHOOD



Salesforce Tower



Transamerica Pyramid

2 Geary St



Montgomery Station



Yerba Buena Gardens



Powell Station



Post Street

Geary Street

O'Farrell Street

Ellis Street

Eddy Street

Turk Street

Market Street



Mission Street

Stevenson Street

Howard Street

Civic Center Station

GOLDEN GATE THEATER





**BLUESTONE LANE**



**FLATIRON WINES & SPIRITS**



**LOCAL EDITION**

# NEIGHBORHOOD TENANTS



**IRON HORSE COCKTAILS**



**BLUE BOTTLE**



**ASHA TEA HOUSE**



**HAWTHORN NIGHTCLUB**



**CHOTTO MATTE**



**HOUSE OF SHIELDS**



**ALI MCEVOY**

office 415.415.404.7343  
ali@mavenproperties.com  
DRE #01930635

**PAMELA MENDELSON**

office 415.404.6650  
pam@mavenproperties.com  
DRE #00953050

**GLORIA NORDBAKK**

office 415.225.0626  
gloria@mavenproperties.com  
DRE #02207407

**maven**  
RETAIL

NOTICE: This information has been secured from sources we believe to be reliable but we make no representations, warranties, express or implied, as to the accuracy of the information. Listing broker has been given enough information to provide only a preliminary interest in the property. The materials are not to be considered fact. The information contained herein is not a substitute for thorough due diligence investigation. References to square footage, zoning, use, or age are approximate. Please contact the San Francisco Planning Department to verify zoning at (415) 558-6378, as neither broker or landlord represent that this space is suitable for your use. Tenant or Buyer must verify the information at their own expense and bears all the risk for any inaccuracies. By receiving these materials you are agreeing to the disclaimers set forth herein. DRE#01878802

466 Green Street Suite #203 | San Francisco, CA 94133 | 415.781.7700