



Jeff Deitrick, SIOR
Executive VP | Office Agency
jeff.deitrick@colliers.com
412 515 8535

Diron Duah
Associate | Pittsburgh
diron.duah@colliers.com
412 235 9769

Colliers Pittsburgh
525 William Penn Pl.
Suite #3510
Pittsburgh, PA 15219



Medical/Office For Lease

5187 Library Road
Bethel Park, PA 15102

3,019 Sq. Ft.



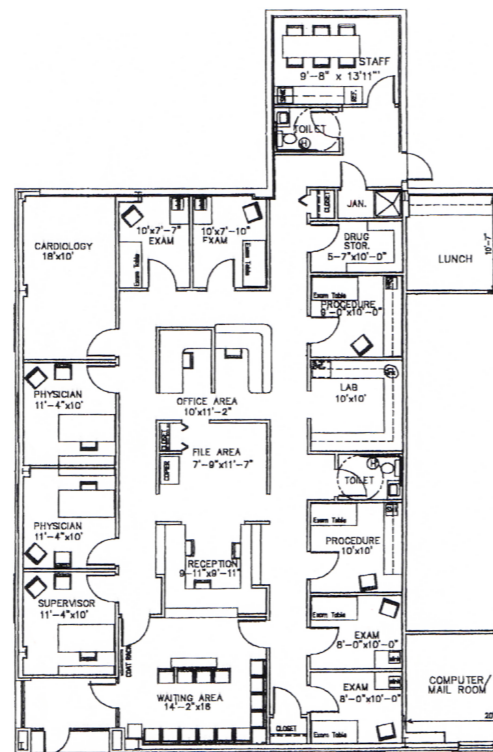


Property Highlights:

- 7,200 sq. ft. professional office and retail building
- Exterior facade signage available
- Tenant monument signage facing Rt. 88
- Brand new HVAC system recently installed
- Centrally located along Route 88 in Bethel Park
- Ample onsite parking for employees and visitors
- Nearby amenities include Walmart, Giant Eagle, Starbucks, Dunkin', Aldi, Panera, and more!
- Within a 15-minute drivetime from Downtown

3,019 RSF Available

- Multiple exam, physician, and procedure rooms
- Waiting room and reception area
- Storage, break, and computer/mail rooms



5186 Library Road, Bethel Park PA 15102
Medical Office Opportunity along Route 88

Get in touch with our listing team for more information:



Jeff Deitrick, SIOR
Executive VP | Office Agency
jeff.deitrick@colliers.com
412 515 8535



Diron Duah
Associate | Pittsburgh
diron.duah@colliers.com
412 235 9769



This document/email has been prepared by Colliers for advertising and general information only. Colliers makes no guarantees, representations or warranties of any kind, expressed or implied, regarding the information including, but not limited to, warranties of content, accuracy and reliability. Any interested party should undertake their own inquiries as to the accuracy of the information. Colliers excludes unequivocally all inferred or implied terms, conditions and warranties arising out of this document and excludes all liability for loss and damages arising there from. This publication is the copyrighted property of Colliers and/or its licensor(s). © 2025. All rights reserved. This communication is not intended to cause or induce breach of an existing listing agreement.