




OFFICE / MEDICAL FOR SUBLEASE

1974 Blue Mesa Court, Loveland, CO 80538

Private offices available for sublease to professional office and medical tenants. Centrally located in the Banner/McKee medical campus, this space has a great location and identity, with easy accessibility.

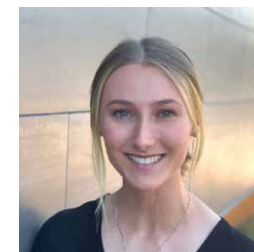
FEATURE HIGHLIGHTS

-  Central Location
-  Natural Light
-  Clean
-  Near Parks
-  Medical
-  Quality Finishes
-  Kitchenette
-  Visibility/Location

PROPERTY OVERVIEW

OFFICE A	Turnkey medical exam suite available for use Monday/Tuesday.
OFFICE B	Private office with great identity and an abundance of natural light.
OFFICE C	Private office with private storage and natural light.
LEASE RATE	\$500/month FSG per office
AVAILABLE	Immediately
EXPENSES (EST)	Included
PARKING	On-Site
ZONING	R3
LEASE THROUGH	5/31/2030

FOR MORE INFORMATION:

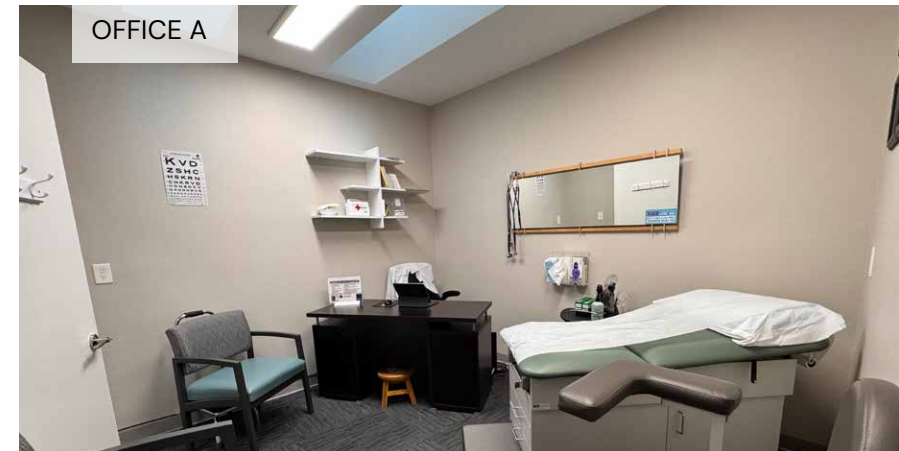
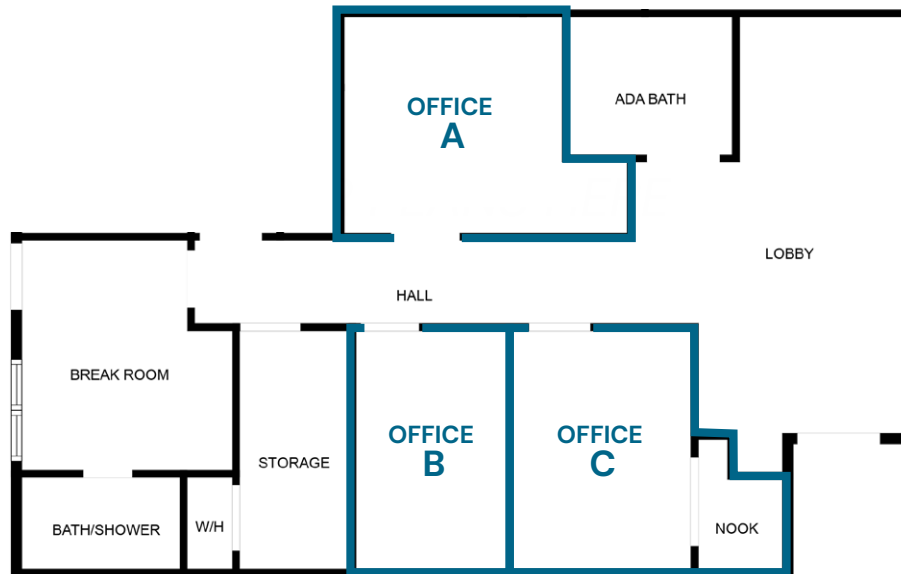


Savannah Paquette

Broker Associate
303.449.2131 ext 133
savannah@coloradogroup.com

PROPERTY FLOOR PLANS

The space was freshly remodeled including new paint and LVP flooring. It features an abundance of light throughout the space, featuring brand new skylights and energy efficient LED lighting. The suite is complete with a common break area/kitchen and storage.



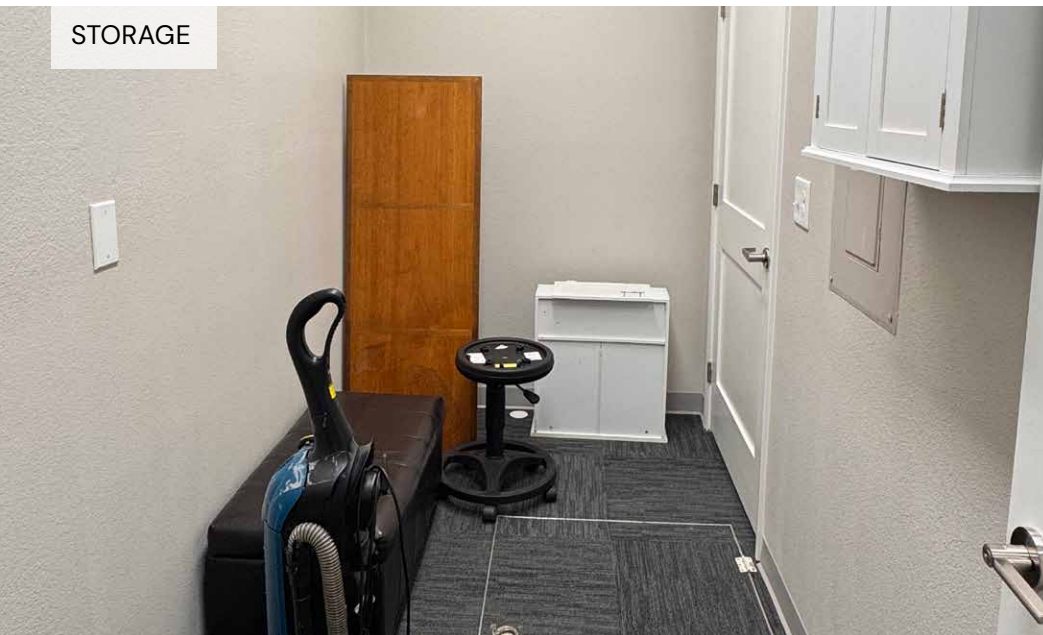
FRONT LOBBY/ RECEPTION



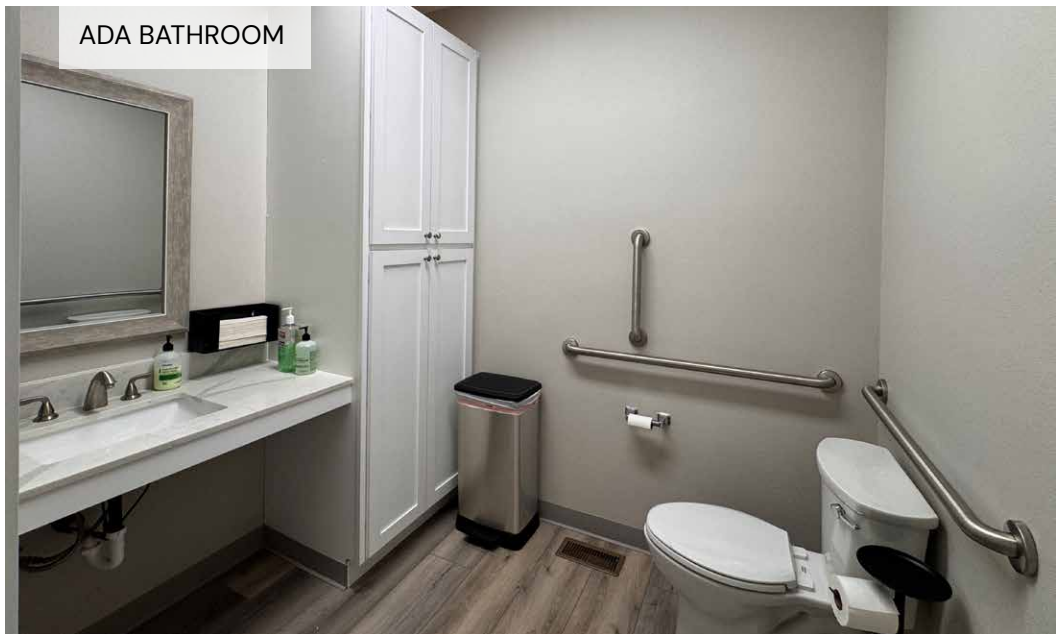
COMMON AREA / BREAK ROOM / KITCHEN



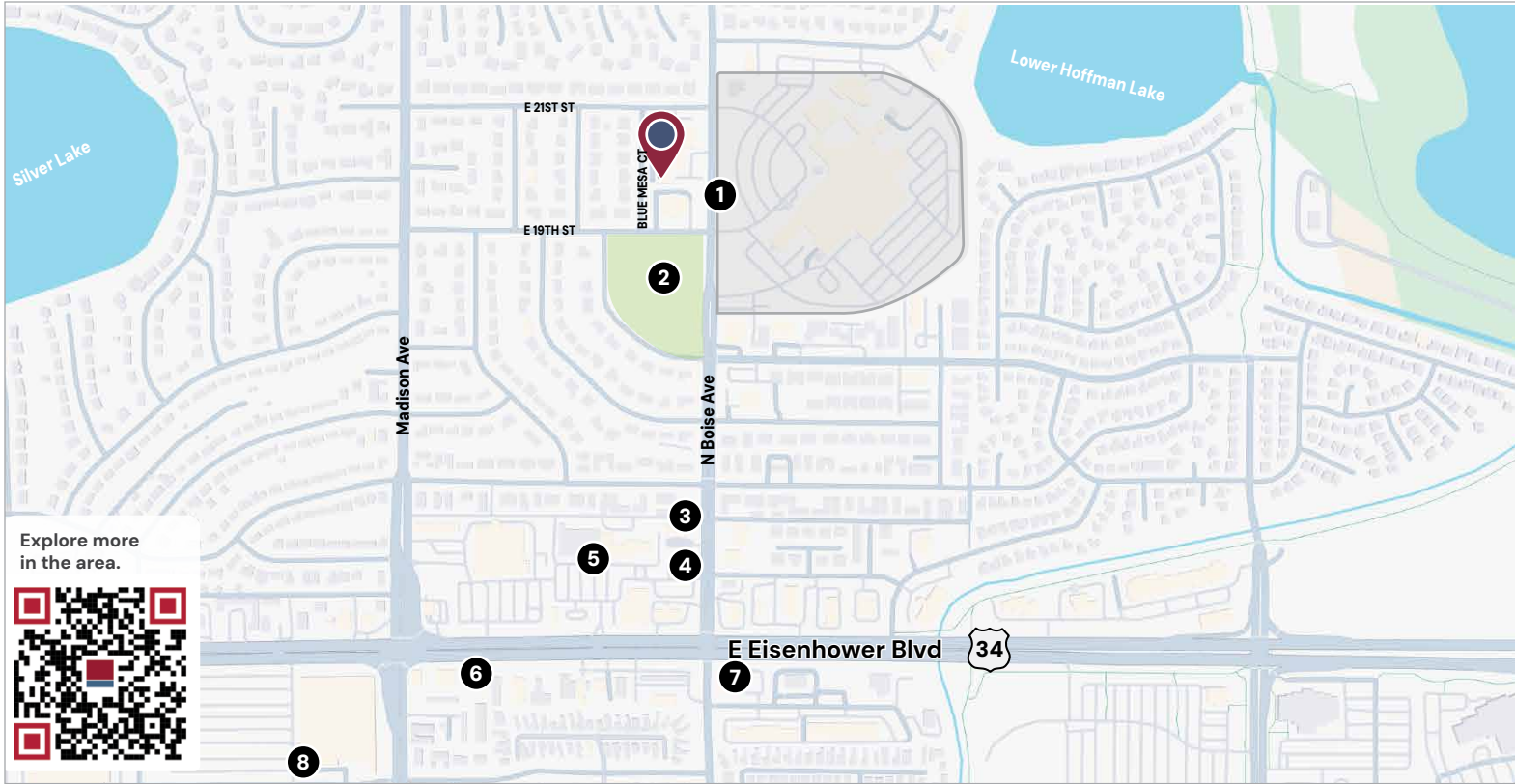
STORAGE




ADA BATHROOM



PROPERTY LOCATION



Explore more in the area.



- 1 Banner Health McKee Medical Center
- 2 McKee Park
- 3 Pizza Street
- 4 Loveland Breakfast Club
- 5 Planet Fitness
- 6 Thai Thai'm
- 7 McGraff 's American Grill
- 8 The Home Depot

