



FORMER BARRY'S U PULL IT AUTO PARTS

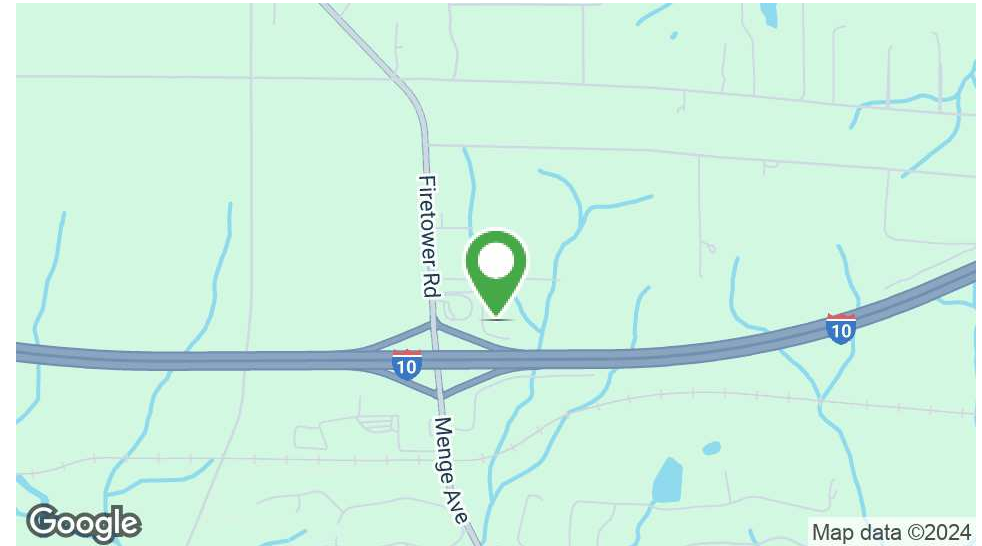
8270 Firetower Road, Pass Christian, MS 39571

SCOTT DELANO • PRINCIPAL

OFFICE: 228.276.2700

MOBILE: 228.806.7418

sdelano@southeastcre.com



PROPERTY DESCRIPTION

Southeast Commercial is thrilled to offer an exceptional property for sale: the former Barry's U Pull It Auto Parts. This expansive site encompasses approximately 23.7 acres of prime real estate and features a well-maintained 4,930 SF building. Strategically situated just off I-10, the property benefits from unparalleled accessibility and high traffic visibility. With a remarkable AADT count of 55,200, and with the anticipated influx of car flow from the new Buc-ee's coming to the coast, this location is poised for significant exposure and growth. Whether you're looking to develop a new business, expand an existing operation, or leverage the high-traffic potential, this property offers a wealth of opportunities.

OFFERING SUMMARY

Sale Price:	\$7,300,000.00
Lot Size:	1,032,372 SF

DEMOGRAPHICS	0.3 MILES	0.5 MILES	1 MILE
Total Households	6	50	357
Total Population	15	133	952
Average HH Income	\$67,688	\$78,808	\$79,263

LAND FOR SALE

PROPERTY SUMMARY





FORMER BARRY'S U PULL IT AUTO PARTS

8270 Firetower Road, Pass Christian, MS 39571

SCOTT DELANO • PRINCIPAL

OFFICE: 228.276.2700

MOBILE: 228.806.7418

sdelano@southeastcre.com



LAND FOR SALE

ADDITIONAL PHOTOS

SOUTHEAST COMMERCIAL REAL ESTATE | 2310 19th Street Gulfport, MS 39501 | <https://southeastcre.com>



SOUTHEAST
COMMERCIAL
REAL ESTATE



FORMER BARRY'S U PULL IT AUTO PARTS

8270 Firetower Road, Pass Christian, MS 39571

SCOTT DELANO • PRINCIPAL

OFFICE: 228.276.2700

MOBILE: 228.806.7418

sdelano@southeastcre.com



LAND FOR SALE

ADDITIONAL PHOTOS

SOUTHEAST COMMERCIAL REAL ESTATE | 2310 19th Street Gulfport, MS 39501 | <https://southeastcre.com>



**SOUTHEAST
COMMERCIAL**
REAL ESTATE



FORMER BARRY'S U PULL IT AUTO PARTS

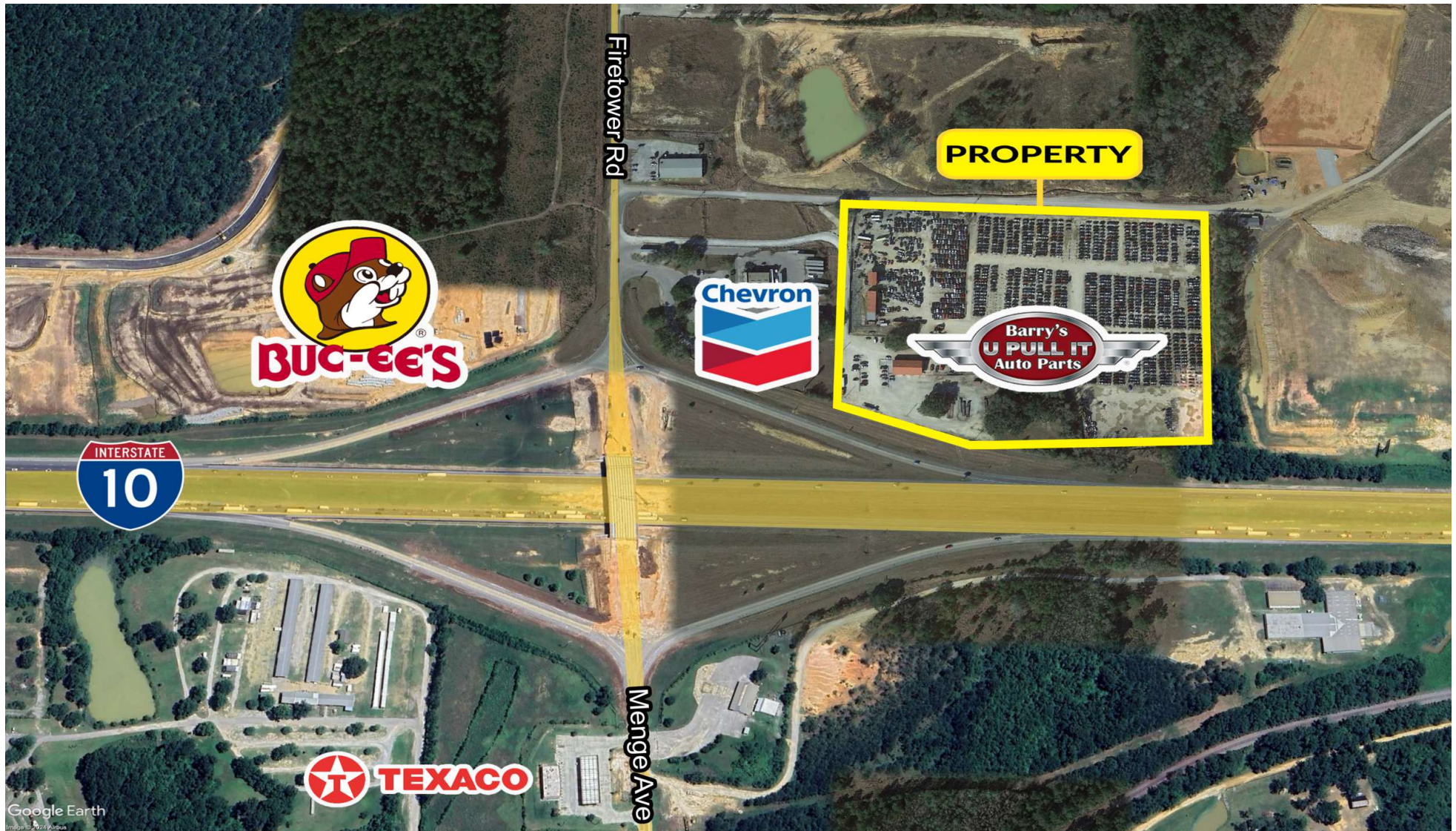
8270 Firetower Road, Pass Christian, MS 39571

SCOTT DELANO • PRINCIPAL

OFFICE: 228.276.2700

MOBILE: 228.806.7418

sdelano@southeastcre.com



LAND FOR SALE

ADDITIONAL PHOTOS

SOUTHEAST COMMERCIAL REAL ESTATE | 2310 19th Street Gulfport, MS 39501 | <https://southeastcre.com>



SOUTHEAST
COMMERCIAL
REAL ESTATE



FORMER BARRY'S U PULL IT AUTO PARTS

8270 Firetower Road, Pass Christian, MS 39571

SCOTT DELANO • PRINCIPAL

OFFICE: 228.276.2700

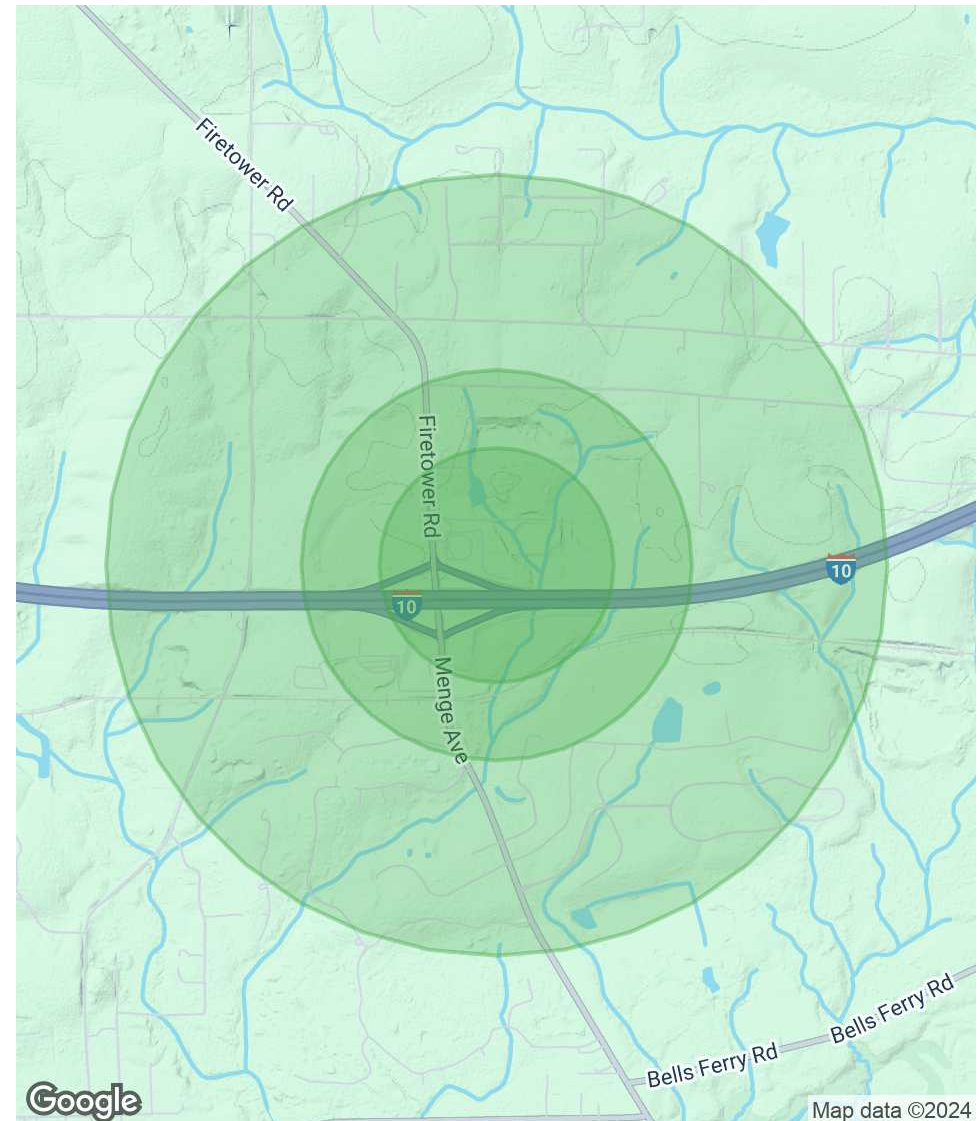
MOBILE: 228.806.7418

sdelano@southeastcre.com

POPULATION	0.3 MILES	0.5 MILES	1 MILE
Total Population	15	133	952
Average Age	43	42	42
Average Age (Male)	43	42	42
Average Age (Female)	43	42	42

HOUSEHOLDS & INCOME	0.3 MILES	0.5 MILES	1 MILE
Total Households	6	50	357
# of Persons per HH	2.5	2.7	2.7
Average HH Income	\$67,688	\$78,808	\$79,263
Average House Value	\$179,259	\$223,053	\$233,139

Demographics data derived from AlphaMap



Map data ©2024

LAND FOR SALE

DEMOGRAPHICS MAP & REPORT



SOUTHEAST
COMMERCIAL
REAL ESTATE