



FOR SALE

SOUTH BISMARCK DEVELOPMENT LOT

3207 AIRWAY AVENUE | BISMARCK, ND



LOT SIZE:

APPROX. 2.5 ACRES

PRICE:

\$5.50 PSF | \$598,950.00

HIGHLIGHTS:

- Level lot with water & sewer adjacent to the property
- Heavy load road construction to the property
- High visibility on the corner of Airway Ave & Northern Plains Dr
- Easy access to Bismarck Expy & I94!
- Can be combined with adjacent acreage

MATHEW REICHERT

CCIM | Broker | Founder
Partner | Commercial REALTOR®

701.223.2450

matt@aspengrouprealestate.com

in



424 South 3rd Street, Suite 2
Bismarck, ND 58504

701.223.2450

www.aspengrouprealestate.com

f @ in

This information has been secured from sources we believe to be reliable, but we make no representation or warranties, expressed or implied, as to the accuracy of the information. All references to age, square footage, income and expenses are approximate. Buyers or lessors should conduct their own independent investigations and rely only on those results.



FOR SALE

3207 AIRWAY AVENUE | BISMARCK, ND

|PROPERTY DETAILS

PID#: Part of 1405-002-201
Legal: Part of Lot A of Lot 2 and Lot 3 less South 350',
Block 2, Sykes Addn
Lot Size: Approx. 2.5 Acres
Zoning: MA—Light Industrial
Taxes: TBD
Specials: TBD

LOCATED NEAR:

Advanced Fleet Services | Bismarck Airport
Dakota Supply Group | Doosan Bobcat
Herc Rentals | Hubbard Feeds | Northern Improvement
Northern Plains Commerce Center
Sam's Club | Walmart

MATHEW REICHERT

CCIM | Broker | Founder | Partner | Commercial REALTOR®

701.223.2450

MATT@ASPENGROUPREALESTATE.COM

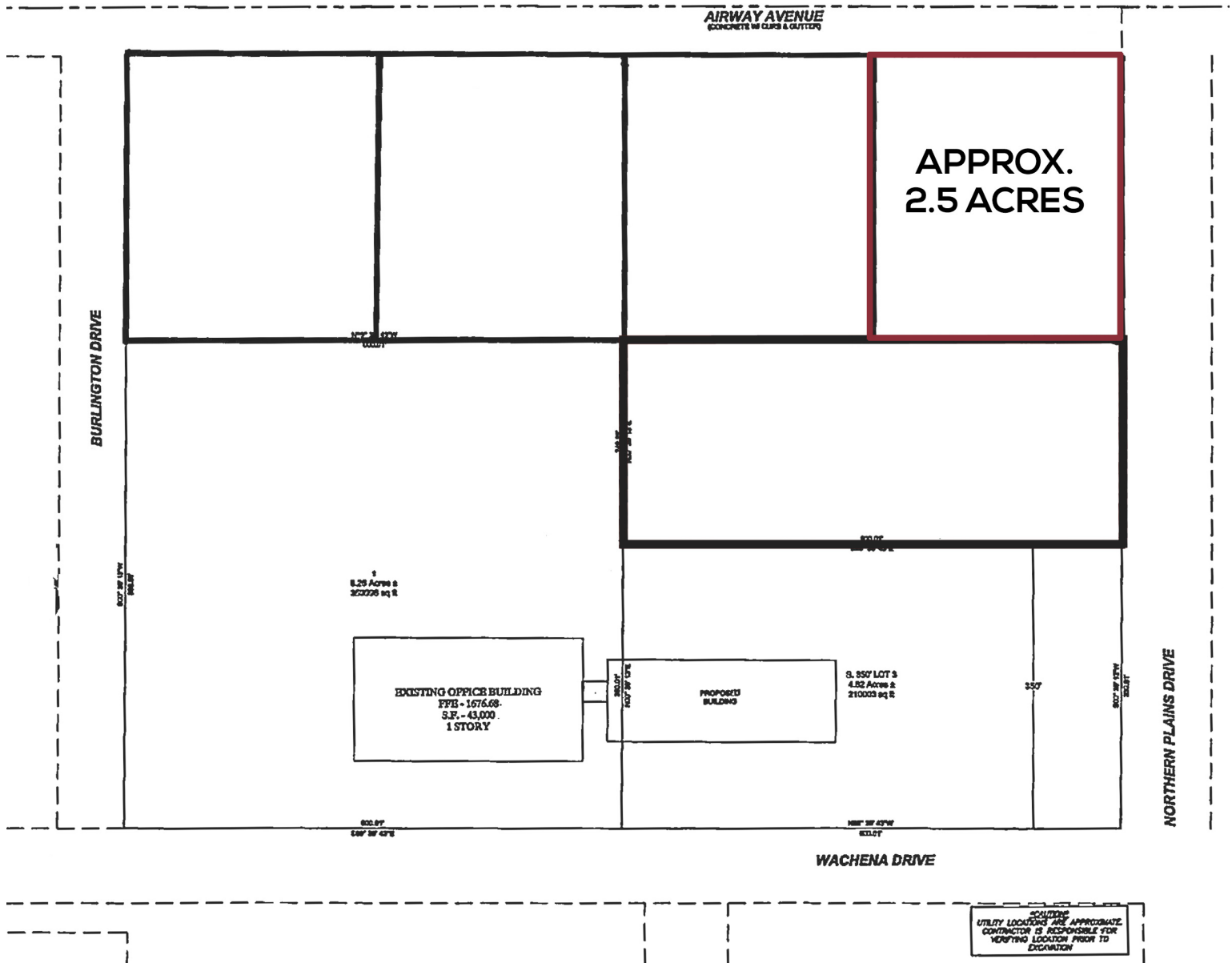


WWW.ASPENGROUPREALESTATE.COM



FOR SALE

3207 AIRWAY AVENUE | BISMARCK, ND



MATHEW REICHERT

CCIM | Broker | Founder | Partner | Commercial REALTOR®

701.223.2450

MATT@ASPENGROUPREALESTATE.COM



WWW.ASPENGROUPREALESTATE.COM



FOR SALE

3207 AIRWAY AVENUE | BISMARCK, ND

LOCATION MAP



MATHEW REICHERT

CCIM | Broker | Founder | Partner | Commercial REALTOR®

701.223.2450

MATT@ASPENGROUPREALESTATE.COM

Connect With Us!



Serving North Dakota's Commercial Real Estate Needs Since 1999.