

FOR SALE

227 N Parler Avenue | Saint George, SC



**COLDWELL BANKER
COMMERCIAL**
ATLANTIC



OFFERING SUMMARY

Price:	\$575,000
Total Available:	3,700 SF
Acres:	0.13 Acres
Zoning:	Dorchester - TC - Town Center
Parcel Number:	045-14-02-004

PROPERTY OVERVIEW

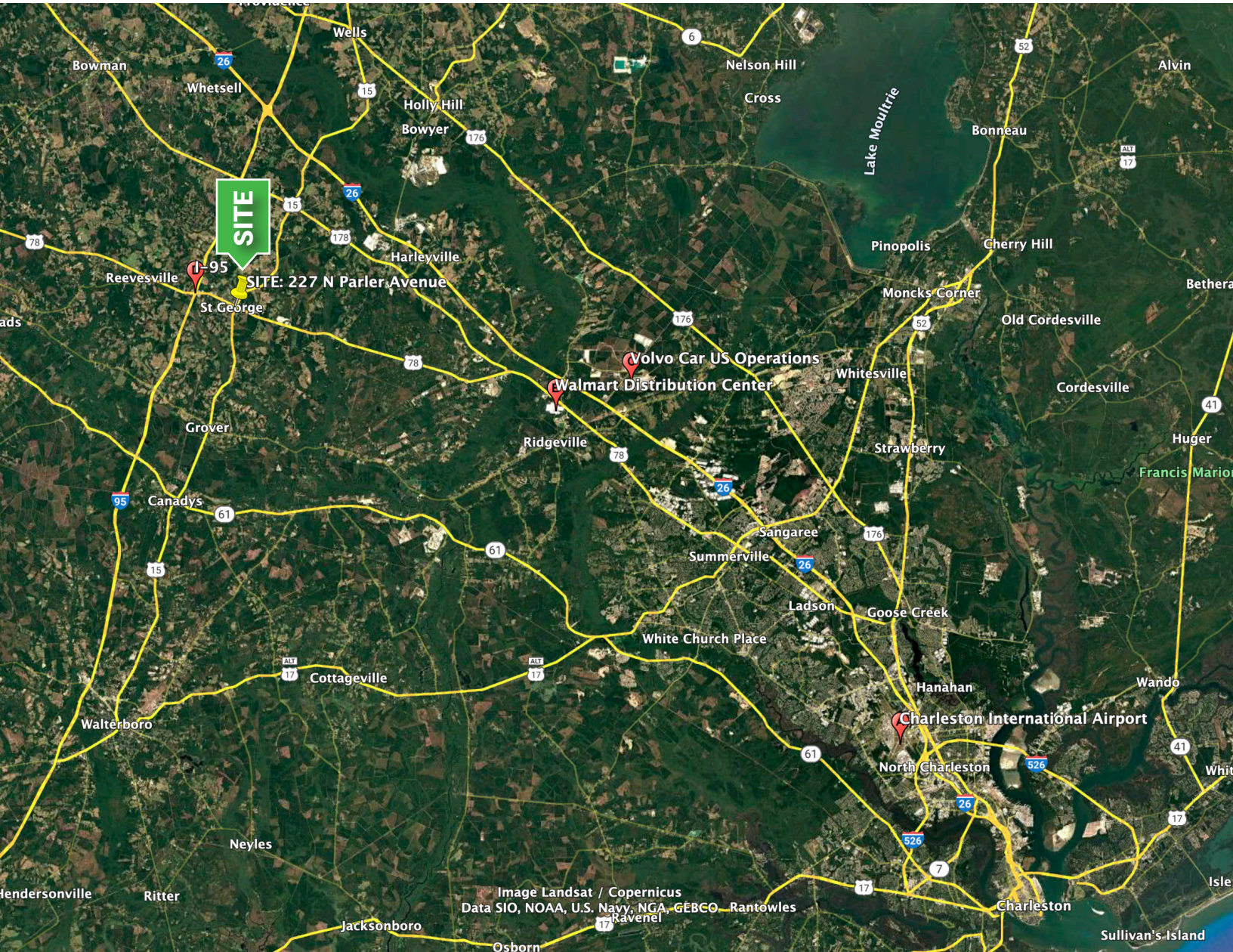
Ensnconed in a restored commercial historic building, our antique shop pays honor to the original name of the Dorchester County (SC) seat, St. George. A town built on the railroad, George's Station was founded largely on the lands of Jim George and is included in the area on the Mill's Atlas map of 1828 as St. George's Parish Dorchester. The antique shop is one piece in the current downtown restoration, which includes the Klauber Building next door on Parler Avenue, which houses a museum and is the office of the Tri-County Chamber of Commerce, and Bistro 221, a restaurant on the other side. These three buildings, all completed in 1894, once served as retail stores and, in the case of the Bistro, a pharmacy. NOTE: A selection of rare antiques is available to the Buyer for purchase separately.

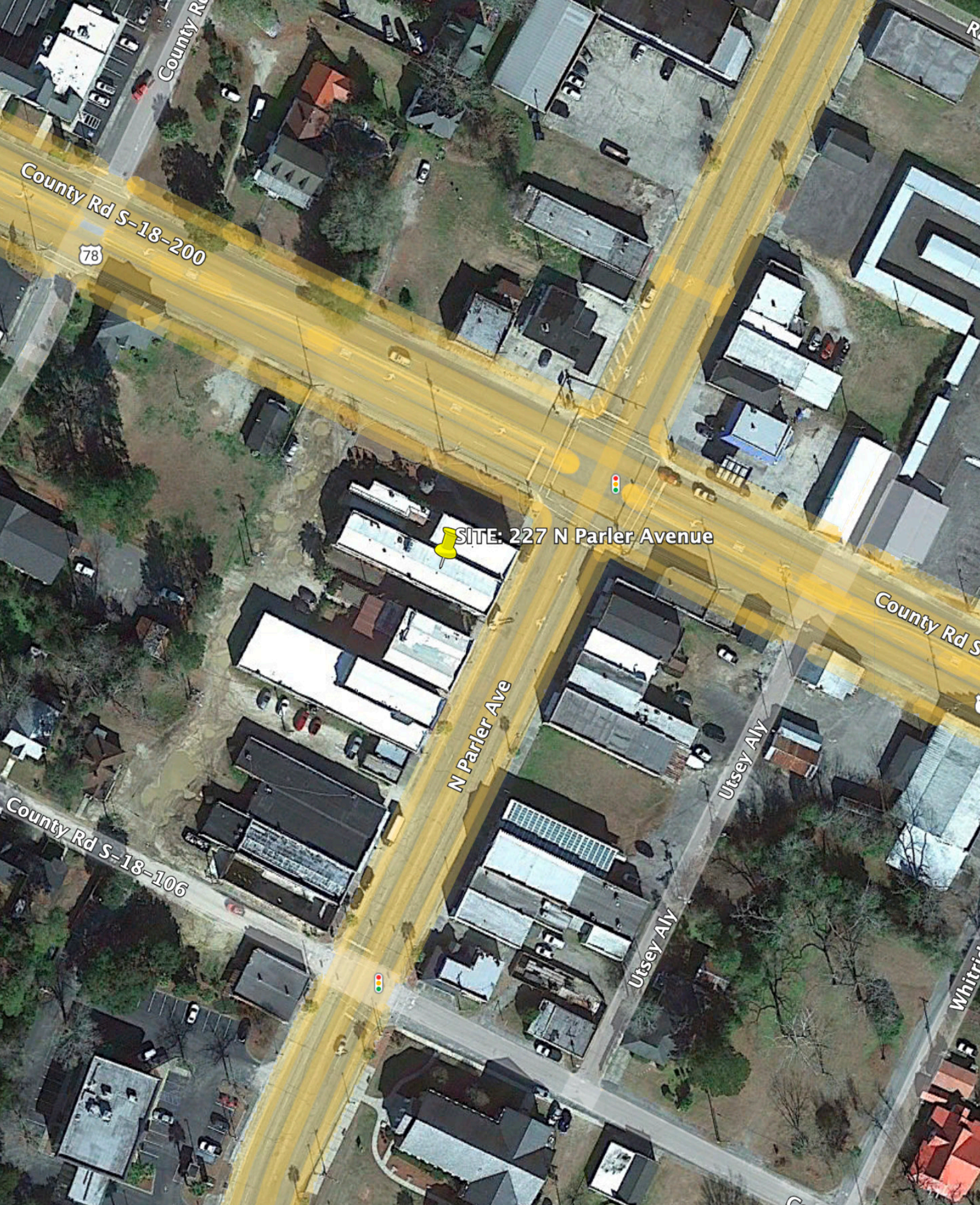


**COLDWELL BANKER
COMMERCIAL**
ATLANTIC

227 N Parler Avenue | Saint George, SC 29477

Neal Walsh • nwalsh@cbcatlantic.com





SITE: 227 N Parler Avenue



COLDWELL BANKER
COMMERCIAL
ATLANTIC

227 N Parler Avenue | Saint George, SC 29477

Neal Walsh • nwalsh@cbsatlantic.com



COLDWELL BANKER
COMMERCIAL
ATLANTIC

227 N Parler Avenue | Saint George, SC 29477

Neal Walsh • nwalsh@cbsatlantic.com







Neal Walsh
Senior Broker
(C) 843.330.3737
nwalsh@cbsatlantic.com

3506 W Montague Ave Suite 200
North Charleston, SC 29418
843.744.9877
cbsatlantic.com | cbcretailatlantic.com



**COLDWELL BANKER
COMMERCIAL
ATLANTIC**

This information has been obtained from sources believed reliable but has not been verified for accuracy or completeness. Coldwell Banker Commercial Atlantic makes no guarantee, representation or warranty and accepts no responsibility or liability as to the accuracy, completeness, or reliability of the information contained herein. You should conduct a careful, independent investigation of the property and verify all information. Any reliance on this information is solely at your own risk.

The information contained herein should be considered confidential and remains the sole property of Coldwell Banker Commercial Atlantic at all times. Although every effort has been made to ensure accuracy, no liability will be accepted for any errors or omissions. Disclosure of any information contained herein is prohibited except with the express written permission of Coldwell Banker Commercial Atlantic.