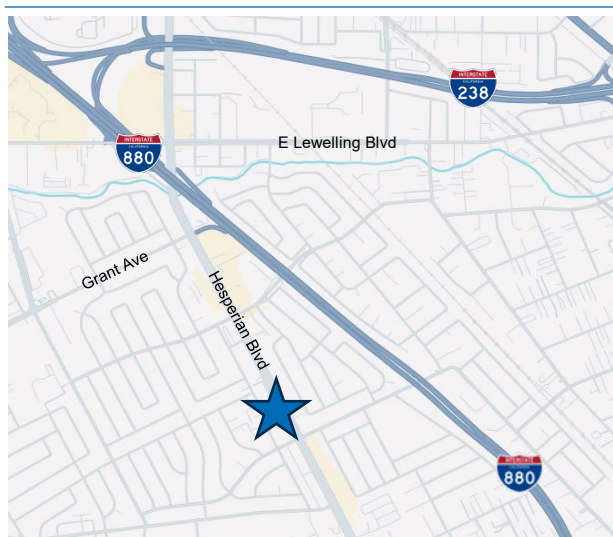




High Visibility Retail/Office Suite for Lease

**17251 Hesperian Blvd
San Lorenzo, CA**



Property Highlights

- Located on high traffic corridor
- Abundant retail stores and restaurants in walking distance
- Two tenant building
- ±1,315 square feet to include:
 - Three restrooms (one ADA compliant)
 - Reception desk and area
 - Multiple private offices
 - Sinks in offices (potential medical or salon uses)
 - One off street private parking stall and yard
 - C-1 Zoning: Retail/Business (office, salons, restaurants, repair shop, law/accounting offices, book store, physical therapy, animal care, etc.)
- Lease Rate: \$2.85/sf + NNN

For information, please contact:

Shawn Klein
Director
t 925-899-8386
shawn.klein@nrmk.com
CA RE License #01426551

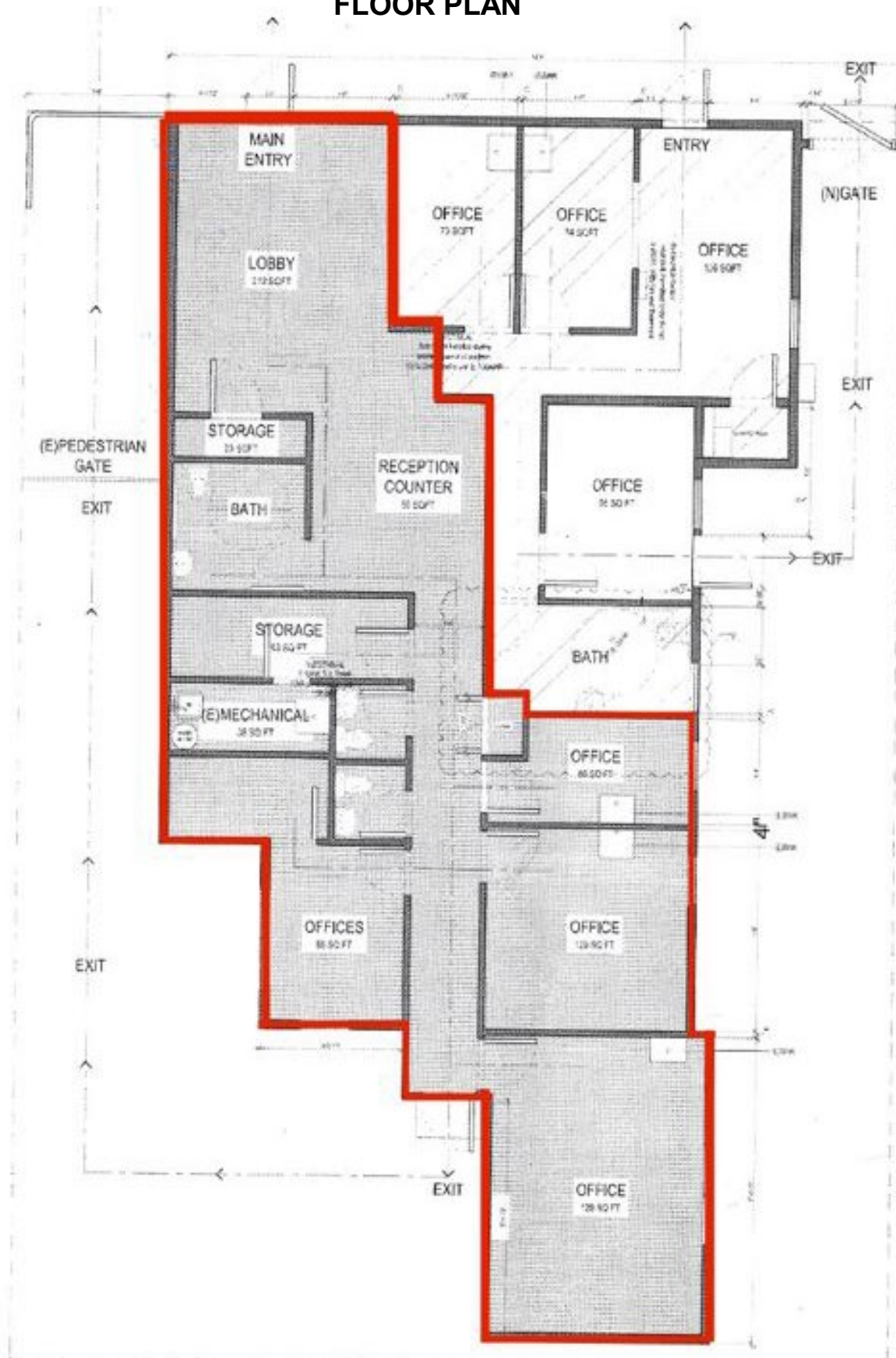
1111 Broadway, Suite 100
Oakland, CA 94607



NEWMARK

The information contained herein has been obtained from sources deemed reliable but has not been verified and no guarantee, warranty or representation, either express or implied, is made with respect to such information. Terms of sale or lease and availability are subject to change or withdrawal without notice.

FLOOR PLAN



17251 Hesperian Blvd, San Lorenzo

ADDITIONAL PHOTOS



NEWMARK