

Yukon Building

601-615 N High St
Columbus, OH 43215
www.cbre.us/columbus

Retail Space Available for Sublease

- 1,144 SF prime storefront retail in Short North Arts District
- Historic building
- Columbus Convention Center located down the street
- Metered street parking
- Parking garages strategically positioned in close proximity to service the area.
- Tenants include D.P. Dough Franchising, Fashionista Therapy, LaserAway, Marcella's, Star Jewelers, The UPS Store, and Winans Fine Chocolate & Coffees.

Location

Short North is known as the “art and soul” of Columbus. The culturally rich Short North Arts District is a pioneer in the urban revitalization of Central Ohio. This vibrant neighborhood is known for its wide variety of amazing art, dining, nightlife, fashion, home décor, and more. Join the hundreds of businesses who call the Short North home.

Contact Us

Luke Streng

Vice President
+1 614 781 5134
luke.streng@cbre.com

Taylor Ford

Senior Associate
+1 614 314 3421
taylor.ford@cbre.com

Tyler Thebes

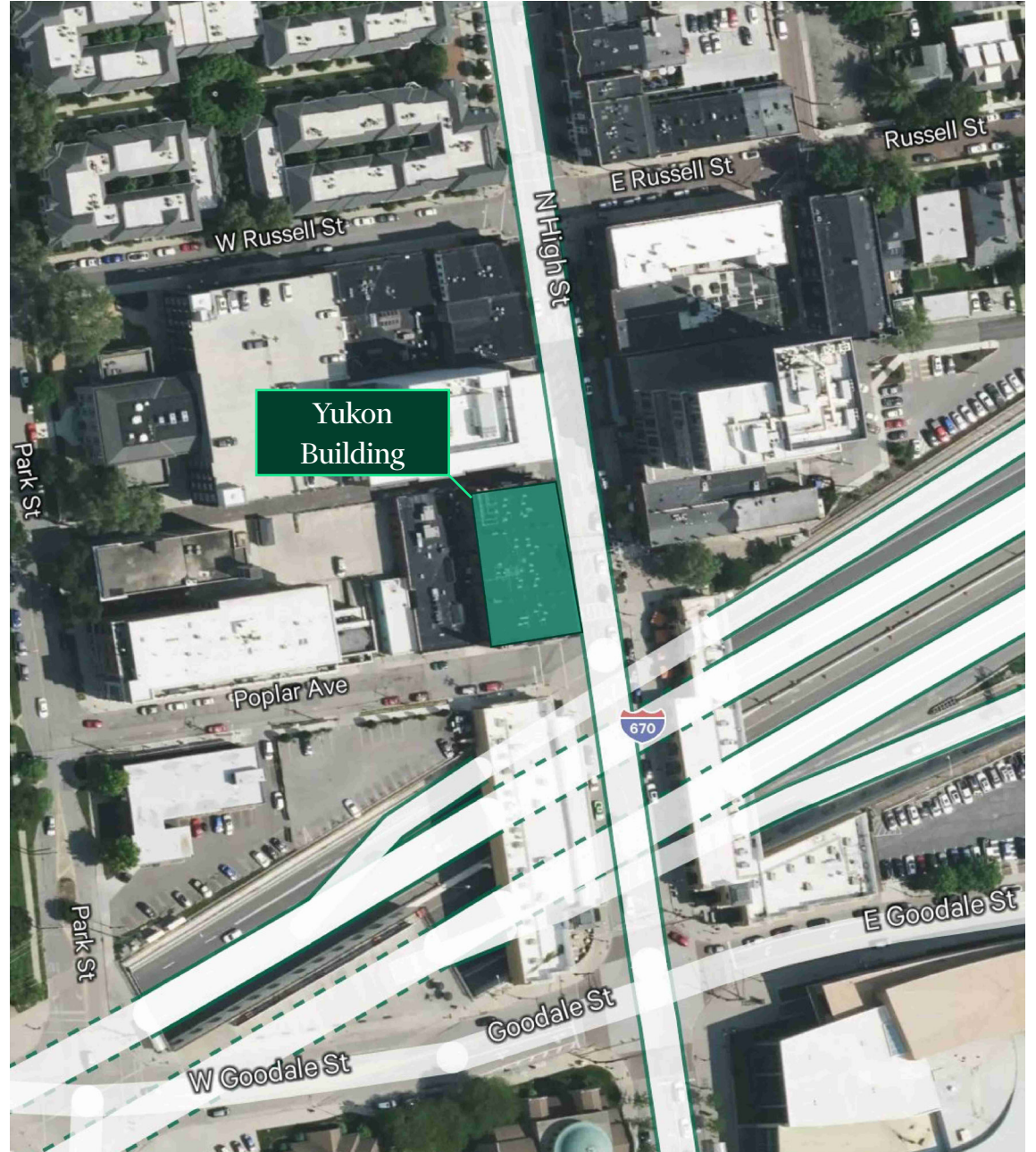
Associate
+1 614 781 5134
tyler.thebes@cbre.com



601-615 N High St

Columbus, OH 43215

Retail | For Sublease

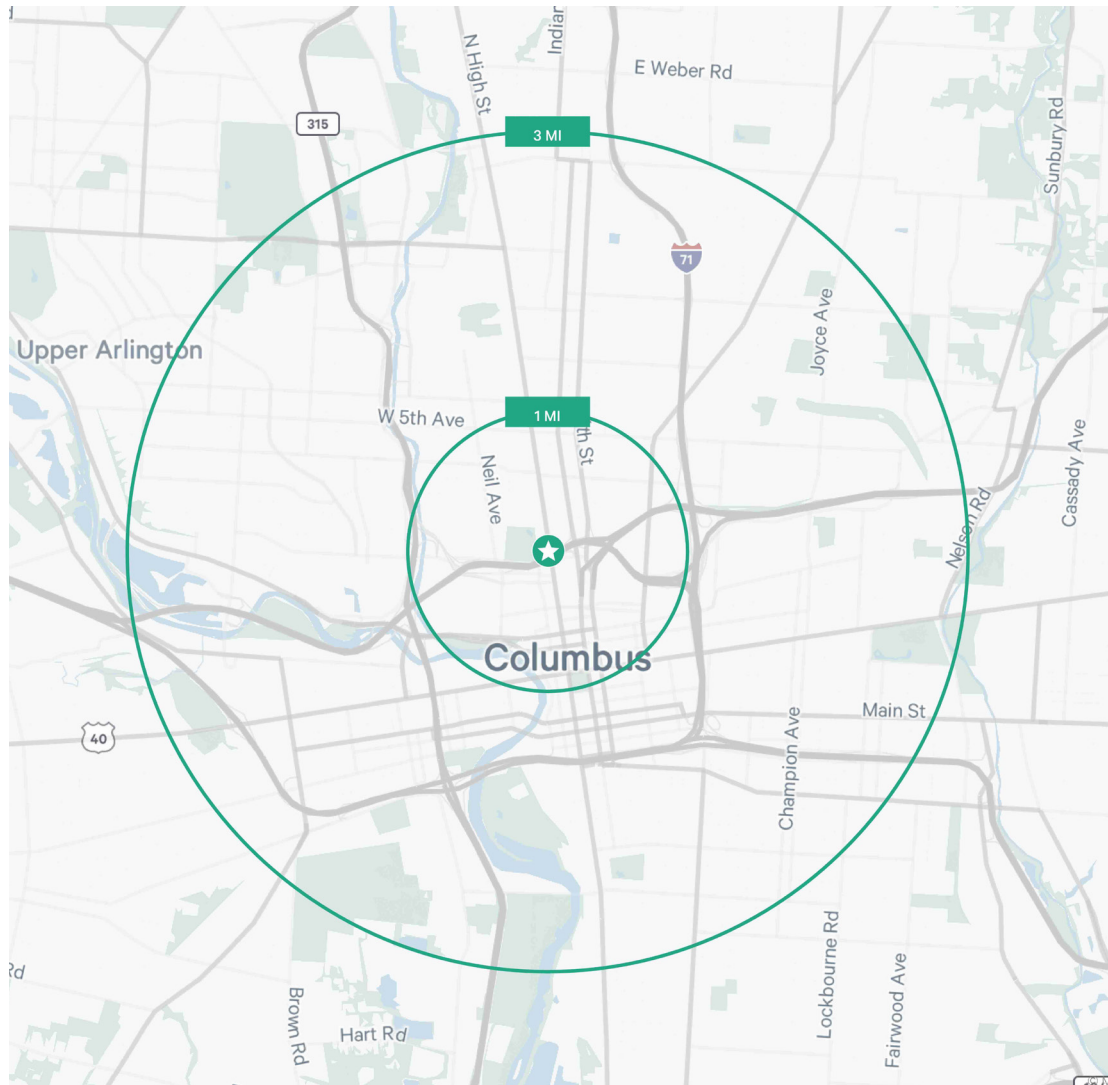


601-615 N High St

Columbus, OH 43215

Retail | For Sublease

2024 DEMOGRAPHICS	POPULATION	DAYTIME POPULATION	MEDIAN HH INCOME	COLLEGE DEGREE	MEDIAN AGE
ONE-MILE RADIUS	21,852	78,272	\$95,379	84.1%	32.1
THREE-MILE RADIUS	166,501	335,979	\$58,563	63.1%	28.7



601-615 N High Street

Columbus, OH 43215

Contact Us

Luke Streng

Vice President
+1 614 781 5134
luke.streng@cbre.com

Taylor Ford

Senior Associate
+1 614 314 3421
taylor.ford@cbre.com

Tyler Thebes

Associate
+1 614 781 5134
tyler.thebes@cbre.com

© 2024 CBRE, Inc. All rights reserved. This information has been obtained from sources believed reliable, but has not been verified for accuracy or completeness. You should conduct a careful, independent investigation of the property and verify all information. Any reliance on this information is solely at your own risk. CBRE and the CBRE logo are service marks of CBRE, Inc. All other marks displayed on this document are the property of their respective owners, and the use of such logos does not imply any affiliation with or endorsement of CBRE. Photos herein are the property of their respective owners. Use of these images without the express written consent of the owner is prohibited. Licensed Real Estate Broker.

