

5301 STEVENS  
CREEK  
BLVD

SANTA CLARA, CA

For Lease  
Building 2 and Building 4



155,029 SF

BUILDING 2

2ND FLOOR 66,000 SF | OFFICE

BUILDING 4

1ST FLOOR 57,422 SF | OFFICE AND LAB

2ND FLOOR 31,607 SF | OFFICE AND LAB

CBRE

# A SILICON VALLEY CLASSIC

Timeless design tuned to today's workplace needs.

A mid-century styled campus at the epicenter of Silicon Valley, 5301 Stevens Creek Blvd. is Santa Clara's premier workplace for growing technology companies.

**155,029 SF AVAILABLE**

## **BUILDING 2**

2nd Floor 66,000 SF | Office

## **BUILDING 4**

1st Floor 57,422 SF | Office and Lab  
2nd Floor 31,607 SF | Office and Lab

**TURNKEY SPACE**

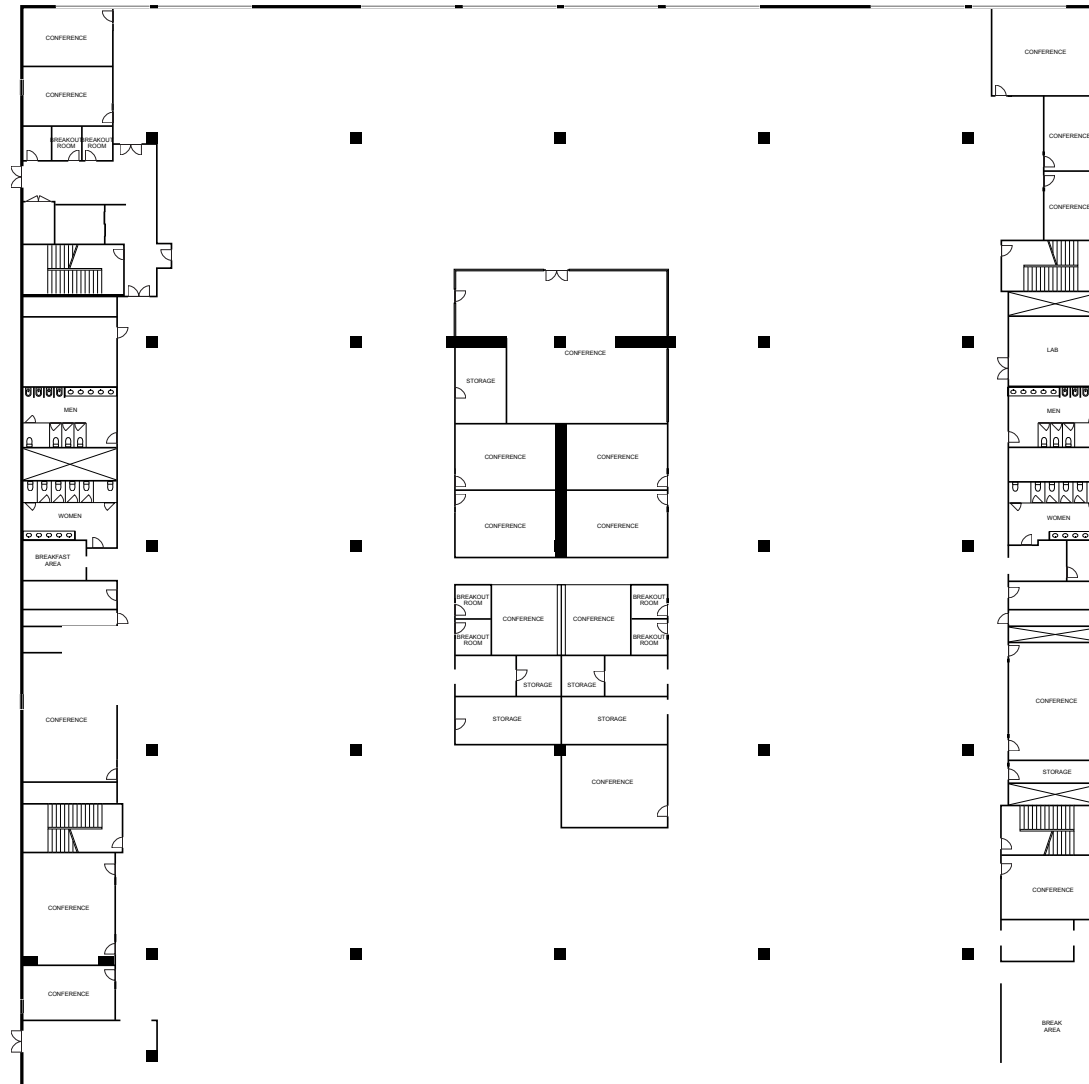
**RICH AMENITY PROGRAM**

**FLEXIBLE LEASE TERMS**

# FLOOR PLAN

Building 2 | Second Floor | 66,000 SF

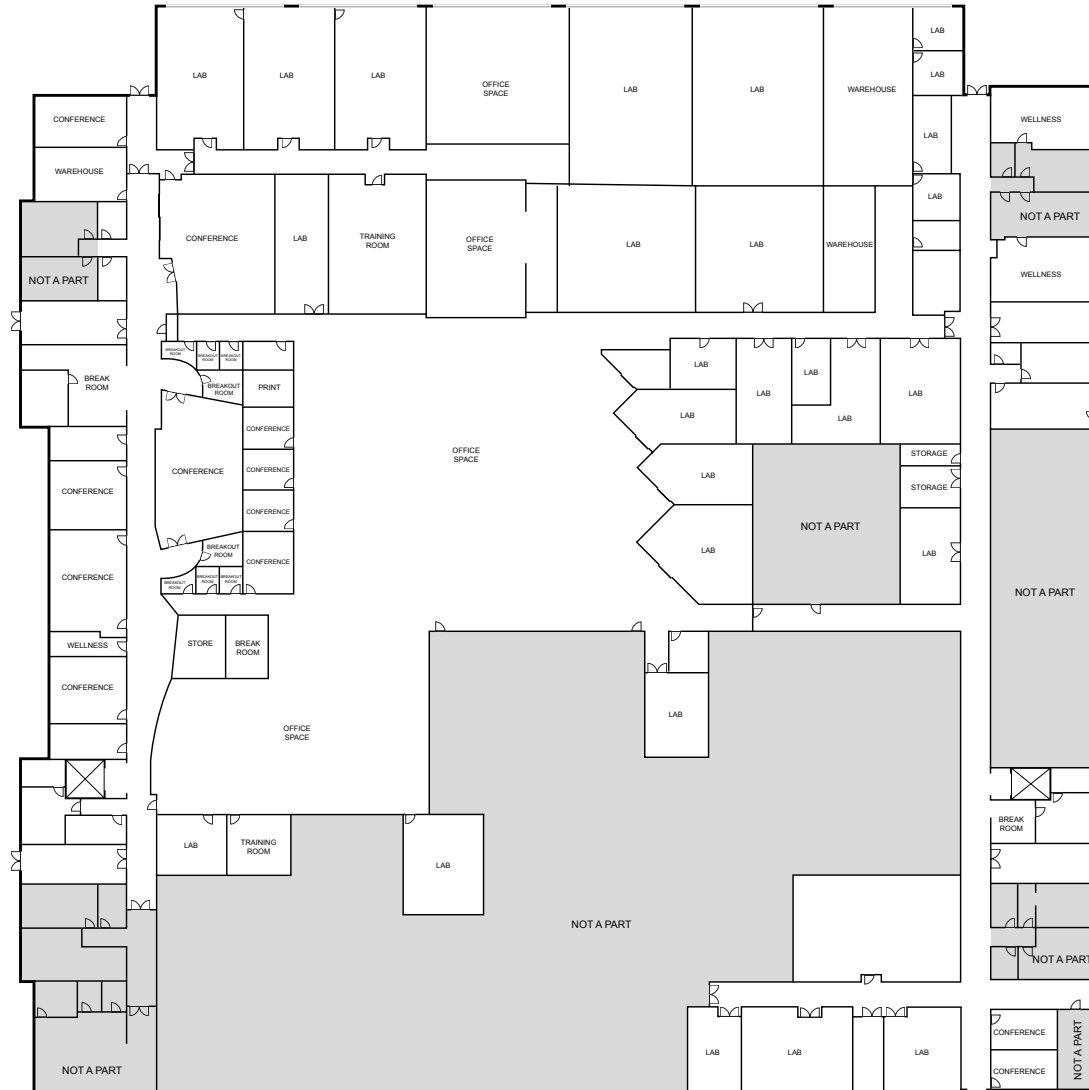
Turnkey Office Space



# FLOOR PLAN

Building 4 | First Floor

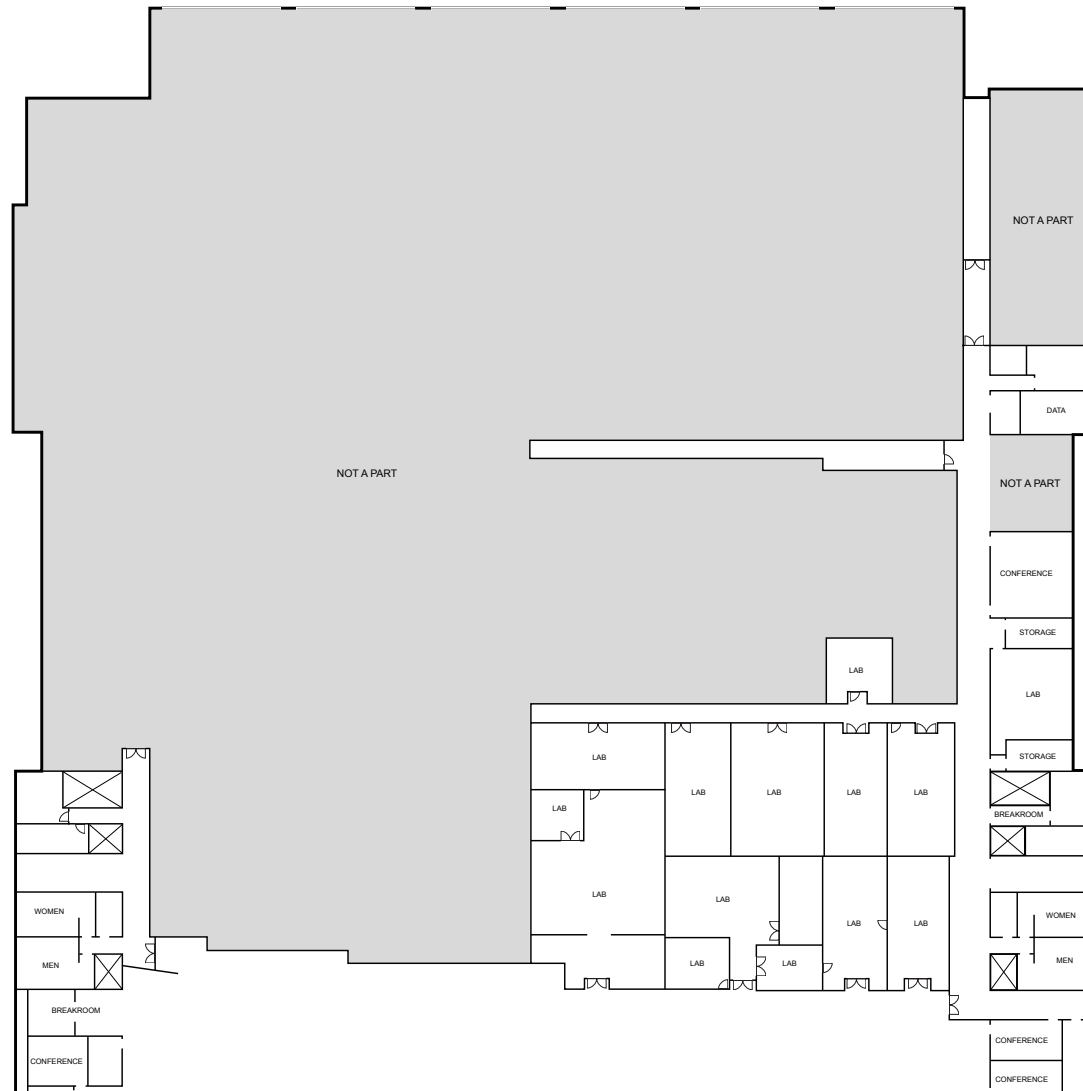
Plug-and-Play Lab and Office



# FLOOR PLAN

Building 4 | Second Floor

Plug-and-Play Lab and Office



# AMENITIES

---

- CAFÉ SUBSIDIZED MENU
- GYM
- PICKLEBALL + BASKETBALL COURTS
- SAND VOLLEYBALL COURT
- LAWN VOLLEYBALL COURT
- CAR CHARGERS COMPLIMENTARY
- ROOF TOP LOUNGES
- POND
- AMPLE PARKING



# OFFICE

---

PLUG-AND-PLAY  
FLEXIBLE LEASE TERM  
FURNITURE AVAILABLE  
CONCIERGE  
ON-SITE SERVICES: MANAGEMENT, SECURITY, MAINTENANCE



# CAMPUS MAP

Where Innovation Meets Legacy.

A Mid-Century Modern Private Hub  
in the Heart of Accessibility





# AMENITIES MAP

**DRIVE TIMES**

MAIN STREET CUPERTINO:	3 MIN
APPLE PARK VISITOR CENTER:	5 MIN
SANTANA ROW:	8 MIN
WESTFIELD VALLEY FAIR:	10 MIN

**5301**  
STEVENS CREEK BLVD  
SANTA CLARA, CA

**Westfield Valley Fair**  
225 Restaurant/Retail Amenities

- bloomingdales
- Bowlero
- MASTRO'S STEAKHOUSE
- The Cheesecake Factory
- EATALY
- NORDSTROM
- SEPHORA

**Santana Row**  
62 Restaurant/Retail Amenities

- LB STEAK
- Peets Coffee & Tea
- Starbucks
- MAGGIANO'S Little Italy
- pressed
- Mendocino Farms
- Yard House
- Vans

**Main Street Cupertino**

- ALEXANDER'S STEAKHOUSE
- MAIN ST CUPERTINO LOFTS
- Lazy DOG
- MERIWEST CREDIT UNION
- Philz Coffee
- Orangetheory FITNESS
- PIZZA HEART

**Woodcrest Hotel**

**Residence INN**  
BY HARRIOTT

**Apple Park Visitor Center**

**HYATT house**

**Hilton Garden Inn**

**COURTYARD**  
BY HARRIOTT

**The Row Hotel**  
**BW**  
SIGNATURE COLLECTION  
by BEST WESTERN

**HOTEL VALENCIA**  
SANTANA ROW





5301 STEVENS  
CREEK  
BLVD  
SANTA CLARA, CA

## CONTACTS

### VINCE MACHADO

Executive Vice President

+1 415 310 7191

[vince.machado@cbre.com](mailto:vince.machado@cbre.com)

Lic. 01317553

### ANTHONY PODESTA

First Vice President

+1 408 646 2778

[anthony.podesta@cbre.com](mailto:anthony.podesta@cbre.com)

Lic. 01467260



© 2024 CBRE, Inc. All rights reserved. This information has been obtained from sources believed reliable but has not been verified for accuracy or completeness. CBRE, Inc. makes no guarantee, representation or warranty and accepts no responsibility or liability as to the accuracy, completeness, or reliability of the information contained herein. You should conduct a careful, independent investigation of the property and verify all information. Any reliance on this information is solely at your own risk. CBRE and the CBRE logo are service marks of CBRE, Inc. All other marks displayed on this document are the property of their respective owners, and the use of such marks does not imply any affiliation with or endorsement of CBRE. Photos herein are the property of their respective owners. Use of these images without the express written consent of the owner is prohibited.