



# 2601 Patriot Boulevard

Glenview, Illinois 60026

One Oakbrook Terrace  
Suite 400  
Oakbrook Terrace, Illinois 60181  
+1 630 932 1234

[hiffman.com](http://hiffman.com)

## PROPERTY HIGHLIGHTS

48,991 SF Two-story Class A Office Building. Glenview is a prime North Shore address with approximately 47,000 residents and 290 acres of parks and recreation. Top notch schools, executive housing and some of the Suburb's best shopping, restaurants, and entertainment.

## Contact

Jason Wurtz  
+1 630 693 0692  
[jwurtz@hiffman.com](mailto:jwurtz@hiffman.com)

Sarah Walker  
+1 630 389 8911  
[swalker@hiffman.com](mailto:swalker@hiffman.com)



NORTH SHORE  
CLASS A LOCATION



WALKABLE  
OUTDOOR  
AMENITIES



+197 PARKING  
STALLS (4/1,000  
SURFACE PARKING)



0.5 MILES TO METRA  
MD-M LINE GLENVIEW  
STATION

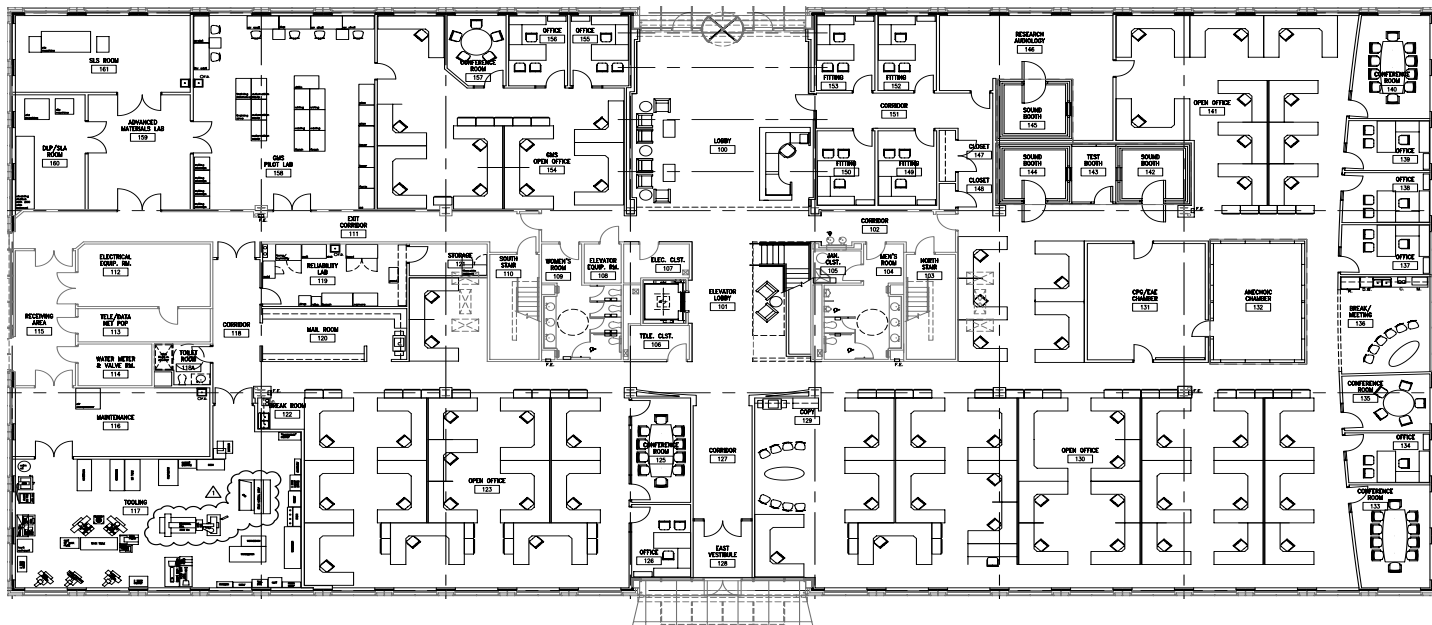


TECH/LAB ROOMS &  
EXISTING SPECIALIZED  
EQUIPMENT

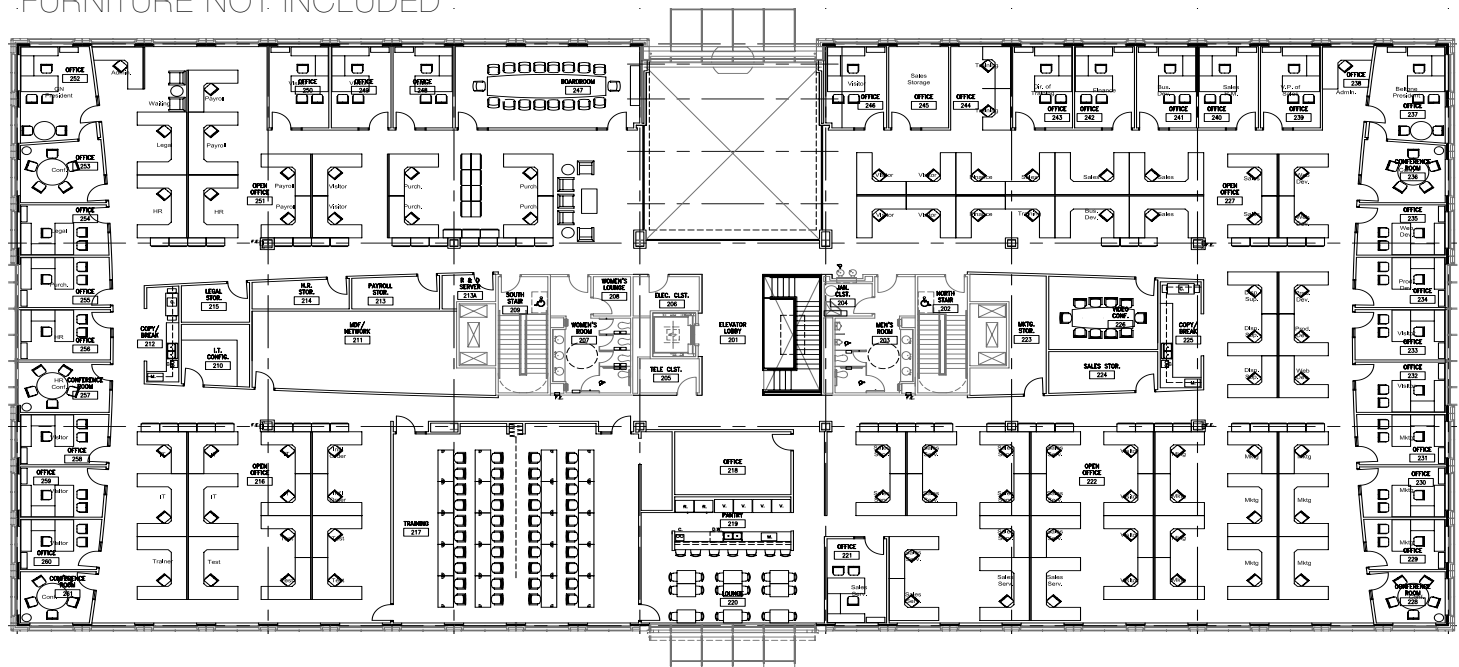


2-FLOORS  
CONSISTING OF  
+24,495 RSF

\*FURNITURE NOT INCLUDED



\*FURNITURE NOT INCLUDED



- $\pm 38$  Private Offices
- $\pm 11$  Conference rooms (5-10 Seats)
- 1 Board Room (18 Seats)
- 1 Coffee Bar/Lounge Area
- 4 Large Break Rooms/Lounges
- 40-60 Person Training Room
- Tech/Lab Rooms
- Shipping/Receiving Area







## LOCATION, LOCATION, LOCATION

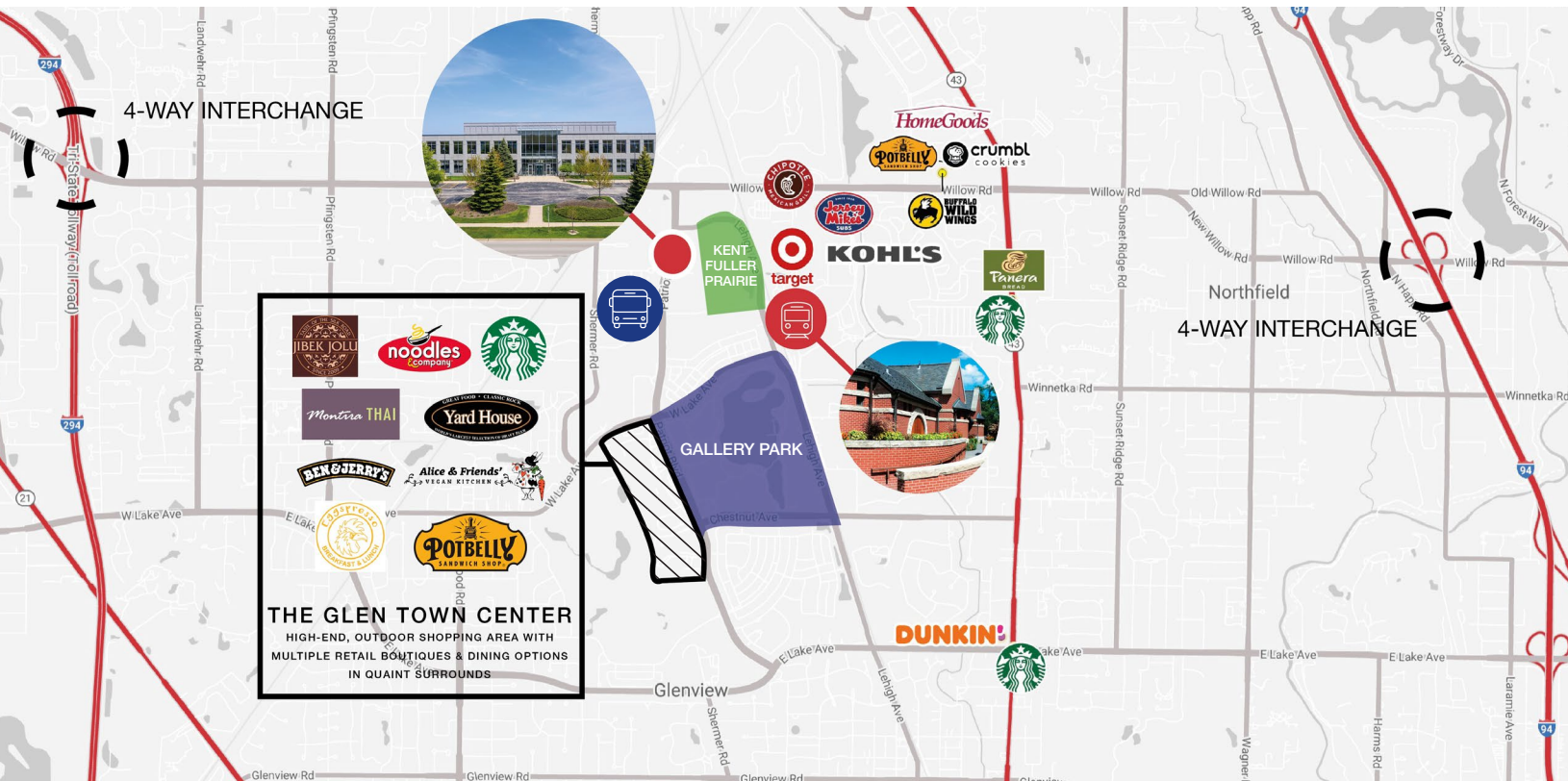
Immediate walkable access to the best amenities in the area, including over 60 retail and restaurant options and outdoor amenities

- Walkable (0.5 miles) to Metra MD-M Line Glenview Station
- Pace Bus Stop located in front of property on Patriot Boulevard
- Walkable to **Kent Fuller Prairie Reserve** (32 acre nature preserve located directly behind 2601 Patriot) & **Gallery Park** (140 acre park, biking/walking paths and pond)
- 2.5 miles to I-294 & Willow Road 4-way interchange
- 3 miles to I-94 & Willow Road 4-way interchange
- Over 60 retail & restaurant options within walking distance

THE KENT FULLER AIR STATION PRAIRIE



GALLERY PARK



## Contact

Jason Wurtz  
+1 630 693 0692  
jwurtz@hiffman.com

Sarah Walker  
+1 630 389 8911  
swalker@hiffman.com

NAI Hiffman HIFFMAN NATIONAL

One Oakbrook Terrace  
Suite 400  
Oakbrook Terrace, Illinois 60181  
+1 630 932 1234

[hiffman.com](http://hiffman.com)