

Available Medical Office Space for Lease

Santa Clarita Valley Medical Plaza

26357 McBEAN PARKWAY, SANTA CLARITA, CA 91355

For leasing information:

Dasche Foley

Director, Leasing

Phone: 858-794-1900

Fax: 858-794-1910

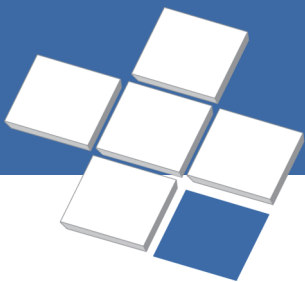
dfoley@pmbres.com

www.pmbres.com

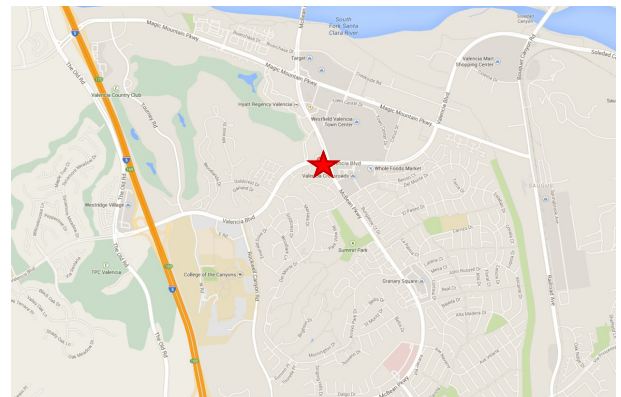
CA Lic. 02111297



- Class A, Three-story, 78,000 SF Medical Office Building constructed in 2005
- Anchor tenants include Providence Holy Cross and Facey Medical Group
- Ample surface parking
- Convenient access to Highway 126 and Interstate 5
- One mile from Henry Mayo Newhall Memorial Hospital
- Local professional management

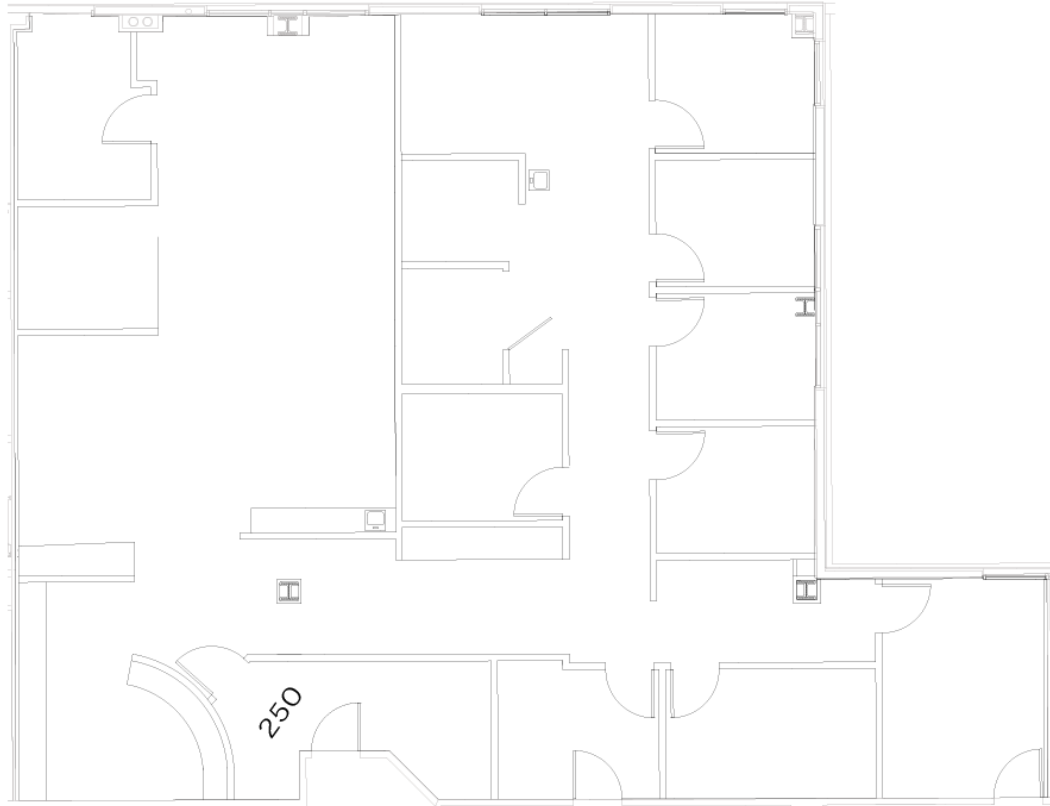


PMB
Real Estate Services
Real Estate Management Solutions for Healthcare



Suite 250 - 2,919 RSF

Click [HERE](#) to take a virtual tour of Suite 250



PMB Real Estate Services
Real Estate Management Solutions for Healthcare