



TRADE MARK
BUSINESS CENTER





PROPERTY DETAILS

220 / 230 / 240 Great Circle Road / Nashville, TN

232,972 SF

Single Story Business Park

- + Office Suites and Light Industrial Flex Spaces Available
- + Multiple Spec Suites in Move-in Condition
- + Dock and Drive-in Doors Available
- + Professionally Owned and Managed
- + Multiple suites with HVAC in Warehouse



Flex Space Available



Conveniently Located Just 3 Miles
North of Downtown Nashville



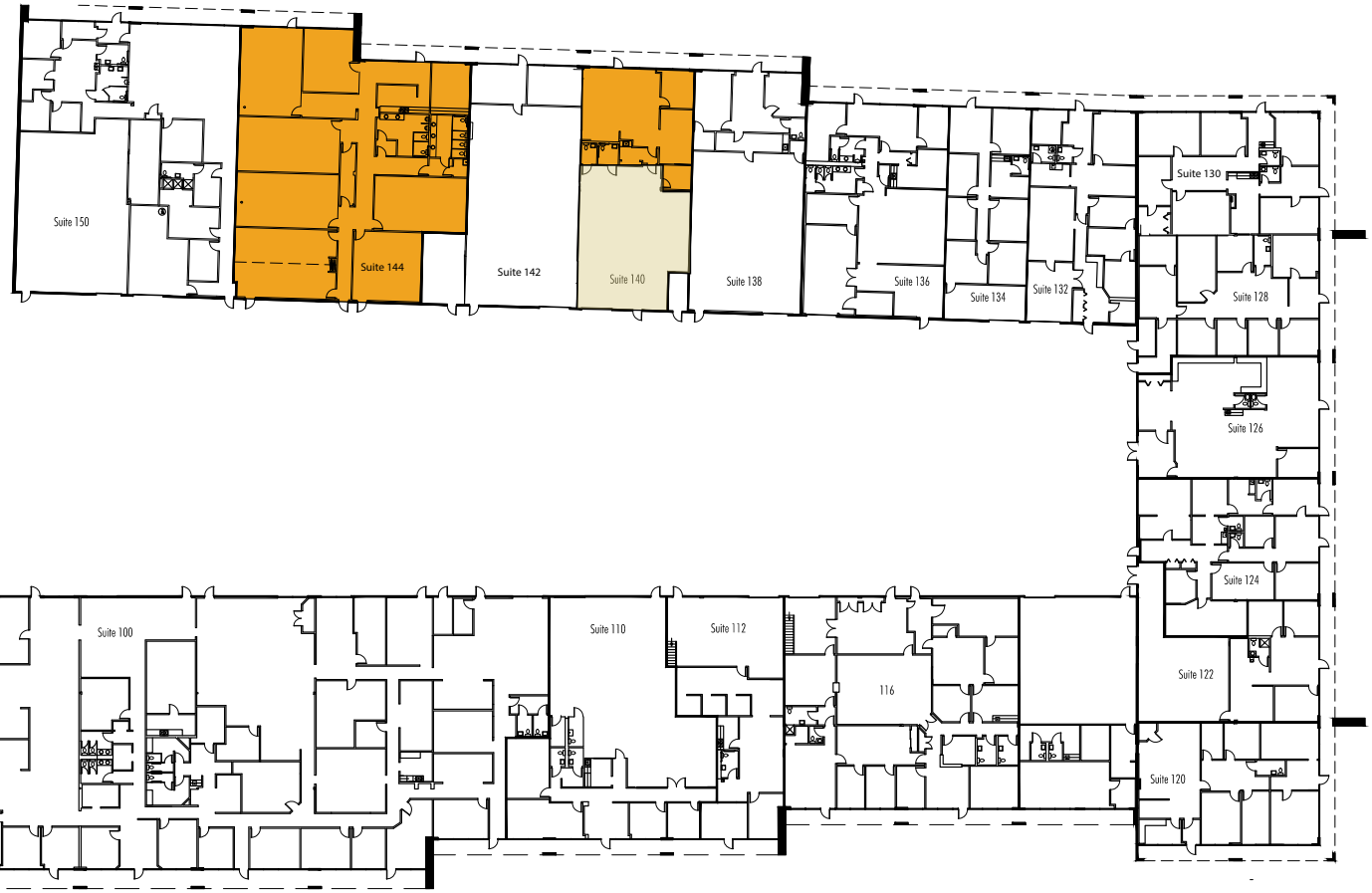
Less Than a Mile from I-65



Parking Ratio: 3/1,000



BUILDING ONE



Available Suites

+ Suite 140 – 2,880 SF

*Available 11/1/26

+ Suite 144 – 6,509 SF

*Available 7/1/26

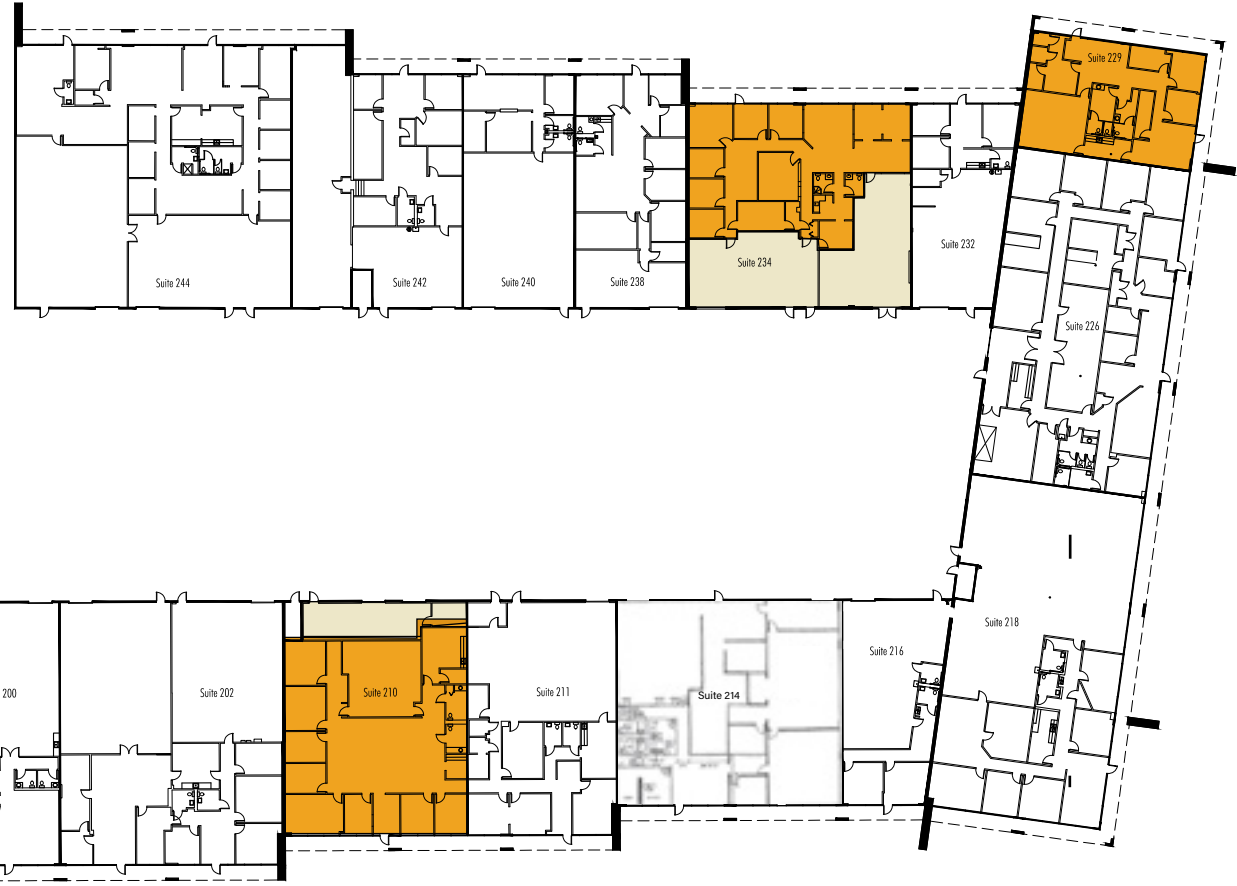
**Landlord will demo to create
warehouse space

 Office

 Warehouse



BUILDING TWO



Available Suites

- + Suite 210 - 5,034 SF
 - Office: 4,348 SF
 - Warehouse: 686 SF
- + Suite 229 - 2,472 SF
 - Office: 2,472 SF

*Available 12/1/26
- + Suite 234 - 5,454 SF
 - Office: 4,348 SF
 - Warehouse: 1,106 SF

*Available 12/1/26





BUILDING THREE



Available Suites

+ Suites 344 - 5,546 SF

*Available 10/1/26

+ Suites 316 - 3,175 SF

*Available 11/1/26





ACCESS & AMENITIES





TRADE MARK
BUSINESS CENTER

FOR MORE INFORMATION

Frank Thomasson, SIOR CCIM

Office: +1 615 248 3500

Direct: +1 615 493 9258

frank.thomasson@cbre.com

Ryan Coulter

Office: +1 615 248 1133

Direct: +1 615 972 6080

ryan.coulter@cbre.com

Grace Sport

Office: +1 615 248 3500

Direct: +1 615 493 9261

grace.sport@cbre.com

© 2026 CBRE, Inc. All rights reserved. This information has been obtained from sources believed reliable, but has not been verified for accuracy or completeness. You should conduct a careful, independent investigation of the property and verify all information. Any reliance on this information is solely at your own risk. CBRE and the CBRE logo are service marks of CBRE, Inc. All other marks displayed on this document are the property of their respective owners, and the use of such logos does not imply any affiliation with or endorsement of CBRE. Photos herein are the property of their respective owners. Use of these images without the express written consent of the owner is prohibited.

