

An aerial photograph of a multi-story commercial building with a mix of brick and glass facades. A large, semi-transparent blue rectangle is overlaid on the upper half of the image, serving as a background for the text. The sky is blue with scattered white clouds.

stirling

PERKINS ROWE

BATON ROUGE, LA

SCOTT MACDONALD, SIOR
Direct: 225-201-0142
smacdonald@stirlingprop.com
8550 United Plaza Blvd., Ste. 101,
Baton Rouge, LA, 70809



CLASS-A OFFICE SPACE FOR LEASE

PROPERTY HIGHLIGHTS

- Class "A" Office Project totaling 128,000 Sq. Ft.
- Prominent Baton Rouge location with Excellent Identity
- Highly visible building from Perkins Rd. and Bluebonnet Blvd.
- Available spaces ranging between 1,000 - 18,000 Sq. Ft.
- Conveniently located to retail, restaurants, and upscale condos and apartments
- On-site property management with security
- Covered and Surface Parking

AVAILABLE

- | | | |
|----------------|------------|-----------|
| • Second Floor | Suite G280 | 4,035 SF |
| • Fourth Floor | Suite G400 | 14,715 SF |
| • Fifth Floor | Suite G500 | 13,302 SF |
| • Fifth Floor | Suite G530 | 5,150 SF |
| • Sixth Floor | Suite G640 | 7,193 SF |

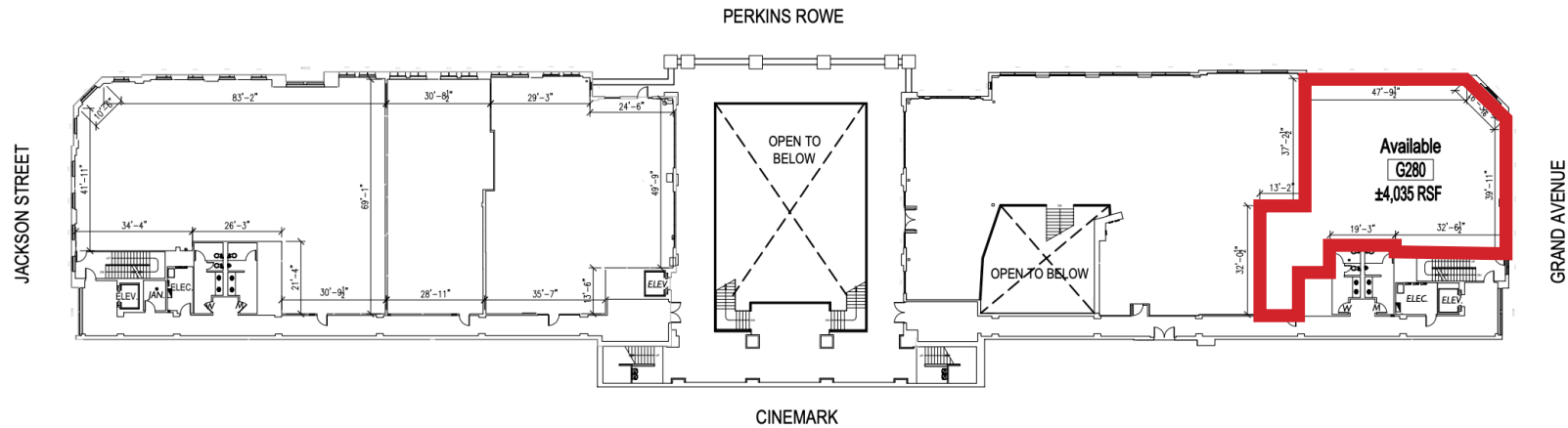
SCOTT MACDONALD, SIOR

Direct: 225-201-0142 | smacdonald@stirlingprop.com
8550 United Plaza Blvd., Ste. 101, Baton Rouge, LA, 70809

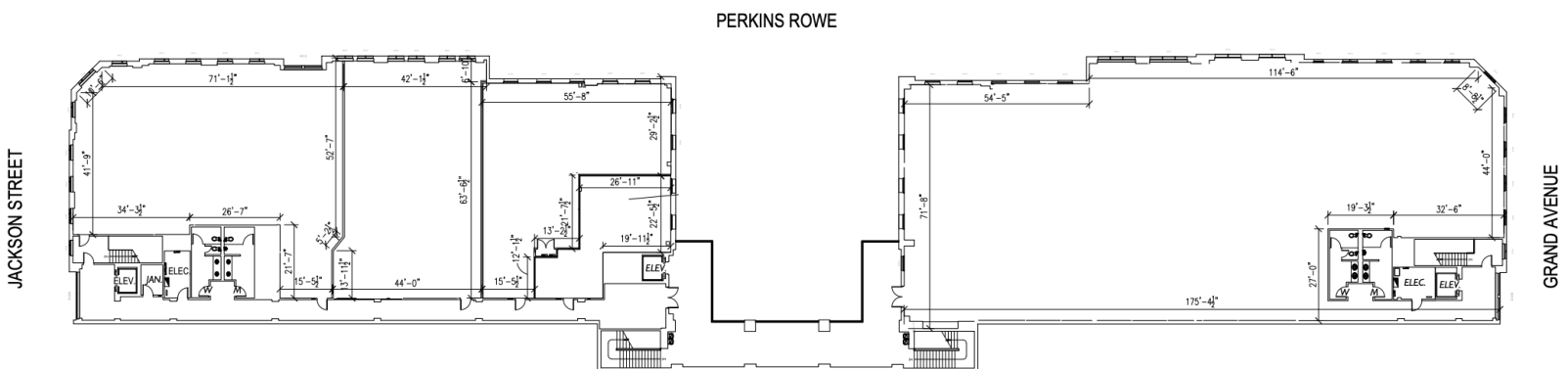
The foregoing is solely for information purposes and is subject to change without notice. Stirling Properties makes no representations or warranties regarding the properties or information herein including but not limited to any and all images pertaining to these properties. It is the obligation of each purchaser/lessee to investigate the condition and attributes of the properties and to verify the accuracy of the foregoing information to the extent such purchaser/lessee deems necessary. Also subject to errors, omissions, changes in terms and conditions, prior sale, lease or withdrawal, without notice. 1/25

Second Floor

Suite G280 - 4,035 SF



Third Floor



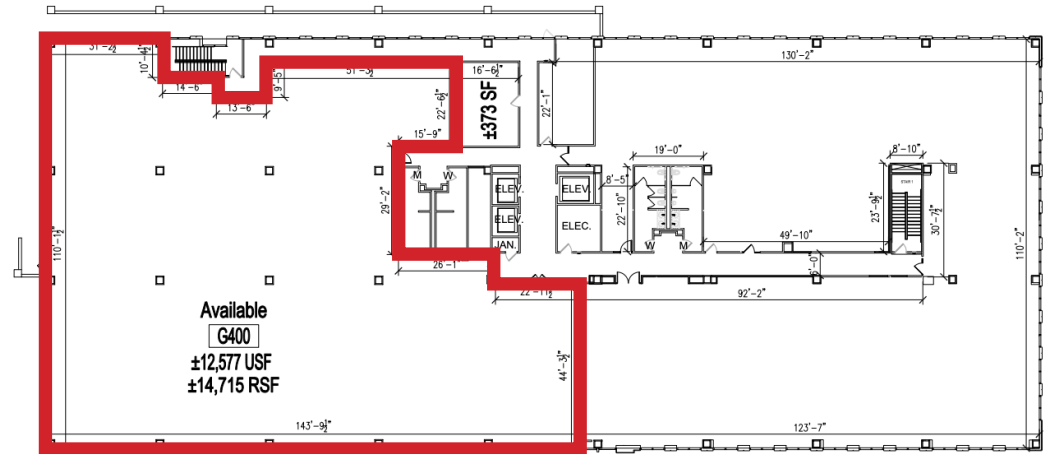
SCOTT MACDONALD, SIOR

Direct: 225-201-0142 | smacdonald@stirlingprop.com
8550 United Plaza Blvd., Ste. 101, Baton Rouge, LA, 70809

The foregoing is solely for information purposes and is subject to change without notice. Stirling Properties makes no representations or warranties regarding the properties or information herein including but not limited to any and all images pertaining to these properties. It is the obligation of each purchaser/lessee to investigate the condition and attributes of the properties and to verify the accuracy of the foregoing information to the extent such purchaser/lessee deems necessary. Also subject to errors, omissions, changes in terms and conditions, prior sale, lease or withdrawal, without notice. 1/25

Fourth Floor

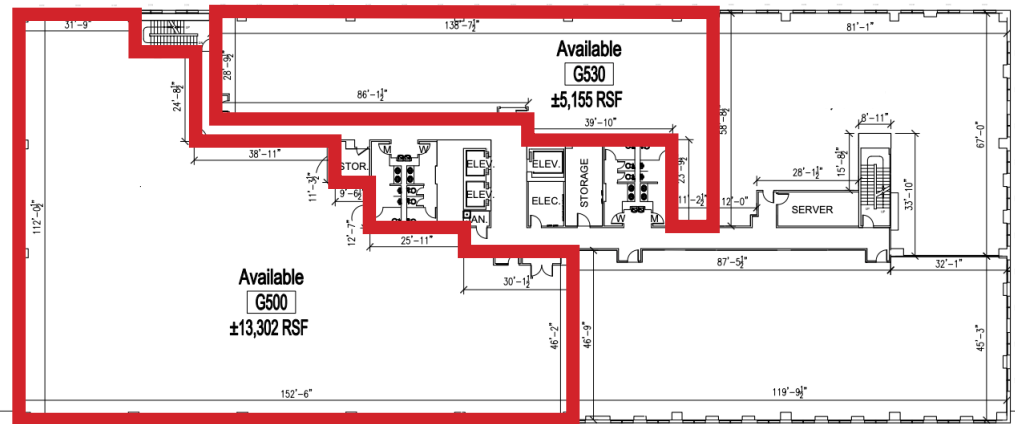
Suite G400 - 14,715 SF



Fifth Floor

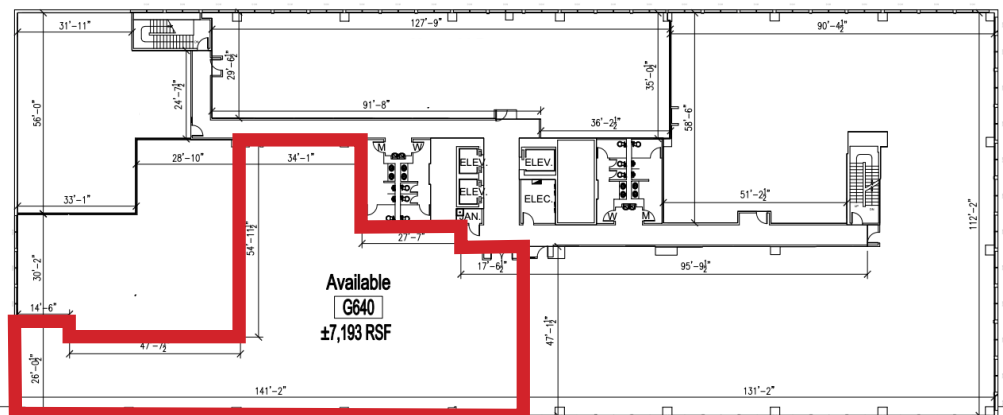
Suite G500 - 13,302 SF

Suite G530 - 5,155 SF



Sixth Floor

Suite G640 - 7,193 SF

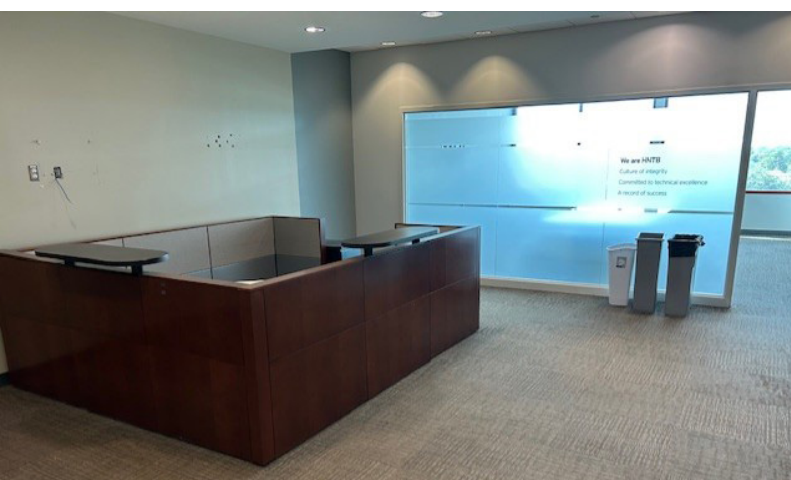


SCOTT MACDONALD, SIOR

Direct: 225-201-0142 | smacdonald@stirlingprop.com

8550 United Plaza Blvd., Ste. 101, Baton Rouge, LA, 70809

The foregoing is solely for information purposes and is subject to change without notice. Stirling Properties makes no representations or warranties regarding the properties or information herein including but not limited to any and all images pertaining to these properties. It is the obligation of each purchaser/lessee to investigate the condition and attributes of the properties and to verify the accuracy of the foregoing information to the extent such purchaser/lessee deems necessary. Also subject to errors, omissions, changes in terms and conditions, prior sale, lease or withdrawal, without notice. 1/25



SCOTT MACDONALD, SIOR

Direct: 225-201-0142 | smacdonald@stirlingprop.com
8550 United Plaza Blvd., Ste. 101, Baton Rouge, LA, 70809

The foregoing is solely for information purposes and is subject to change without notice. Stirling Properties makes no representations or warranties regarding the properties or information herein including but not limited to any and all images pertaining to these properties. It is the obligation of each purchaser/lessee to investigate the condition and attributes of the properties and to verify the accuracy of the foregoing information to the extent such purchaser/lessee deems necessary. Also subject to errors, omissions, changes in terms and conditions, prior sale, lease or withdrawal, without notice. 1/25