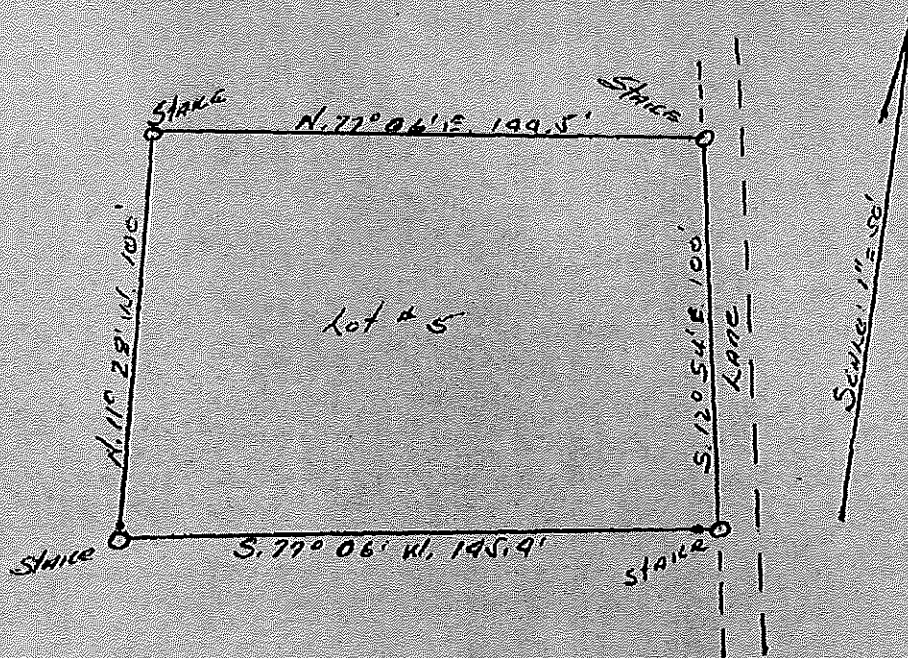


Survey plat of lot No. 4 of Samuel McWhirt Subdivision in Courtland District, Spotsylvania County, Virginia. Oct. 12, 1949. J. M. Witte, Surveyor.



Survey plat of Lot No. 5 of Samuel McWhirt Subdivision in Courtland District, Spotsylvania County, Virginia. Oct. 12, 1949. J. M. Witte, Surveyor.

Code of Ordinances **Sec. 23-6.19.1. - Purpose and intent.**

⋮

The purpose of the commercial 3 (C-3) highway district is to provide for areas of general commercial activity in the county to meet the local and regional commercial needs at high intensity.

(Ord. No. 23-66, 10-24-95; Ord. No. 23-160(2), 9-22-15)

Sec. 23-6.19.2. - Permitted uses.

⋮

The following uses may be established as permitted uses in the commercial 3 (C-3) highway district, subject to site plan approval:

- (1) Accessory uses as permitted by article 5, division 3 of this chapter;
- (2) Adult day care center;
- (3) Amusement arcades;
- (4) Animal shelter;
- (5) Antique shop;
- (6) Art and craft studio;
- (7) Assisted living facility;
- (8) Auction establishments;
- (9) Billiard and pool hall;
- (10) Building materials yard;
- (11) Business service and supply establishment;
- (12) Car wash;
- (13) Child care center;
- (14) Civic, social or fraternal facility;
- (15) Community center;
- (16) Contractor's offices and shops;
- (17) Convenience store;
- (18) Convents, monasteries, seminaries and nunneries;
- (19) Cultural centers, museums or similar facilities;
- (20) Eating establishment;
- (21) Eating establishment, carry out/fast food;
- (22) Financial institutions;
- (23) Fuel dispensing service;
- (24) Funeral home;

Code of Ordinances

- (25) Garden center;
- (26) Golf driving range;
- (27) Heavy equipment and specialized vehicle sale, rental and service establishment;
- (28) Hospital;
- (29) Hotel, motel;
- (30) Indoor commercial recreation/athletic facility;
- (31) Live entertainment, indoor;
- (32) Medical care facility;
- (33) Micro-brewery, winery, cidery, distillery;
- (34) Miniature golf;
- (35) Mini-warehousing establishments;
- (36) Nursing home;
- (37) Offices;
- (38) Outdoor sports and recreation, commercial;
- (39) Personal service establishment;
- (40) Places of worship;
- (41) Private school;
- (42) Public facility/uses;
- (43) Public school;
- (44) Quasi-public parks, playgrounds, athletic fields and related facilities;
- (45) Repair service establishments;
- (46) Retail sales establishments;
- (47) Scientific research and development establishment;
- (48) Shopping centers;
- (49) Theaters;
- (50) Vehicle light service establishments;
- (51) Vehicle sale, rental, and ancillary service establishment, large scale;
- (52) Vehicle major service establishment;
- (53) Veterinary hospitals/services;
- (54) Wholesale trade establishments.

(Ord. No. 23-66, 10-24-95; Ord. No. 23-81, 6-22-99; Ord. No. 23-98, 2-12-02; Ord. No. 23-105, 6-24-03; Ord. No. 23-152, 1-8-13; Ord. No. 23-160(2), 9-22-15; Ord. No. 23-174, § 1, 11-28-17)

Sec. 23-6.19.3. - Special uses.

Code of Ordinances

⋮

The following uses may be established as special uses in the commercial 3 (C-3) highway district,
subject to approval by the board of supervisors in accordance with article 4, division 5 of this chapter:

- (1) Above ground fuel storage tanks exceeding one-thousand (1,000) gallons;
- (2) Bus station/depot/terminal;
- (3) Civic and sports arena;
- (4) College or university;
- (5) Crematory or crematorium as part of a funeral home;
- (6) Dormitory, fraternity/sorority houses, or other residence halls;
- (7) Drive-in motion picture theaters;
- (8) Heliports;
- (9) Helistop;
- (10) Live entertainment, outdoor;
- (11) Open air market;
- (12) Parking, commercial off-street, as a principle use;
- (13) Public utility, light;
- (14) Railroad station/depot/terminal;
- (15) Rooming/boarding houses;
- (16) Telecommunications tower;
- (17) Establishing a permitted use as specified in section 23-6.19.2 or special use as specified in section 23-6.19.3 with a building exceeding the height limitations set out in section 23-6.19.6(1);
- (18) Vehicle sale, rental, and ancillary service establishment, small scale;
- (19) Wetland mitigation bank.

(Ord. No. 23-66, 10-24-95; Ord. No. 23-81, 6-22-99; Ord. No. 23-82, 7-13-99; Ord. No. 23-83, 8-24-99; Ord. No. 23-97, 10-23-01; Ord. No. 23-98, 2-12-02; Ord. No. 23-103, 2-11-03; Ord. No. 23-152, 1-8-13; Ord. No. 23-160(2), 9-22-15; Ord. No. 23-174, § 1, 11-28-17)

Sec. 23-6.19.4. - Development standards: Use limitations.

⋮

1. The outdoor storage, loading and display of goods shall be limited to the area or areas so designated for those uses on an approved site plan.
- 2.