

6935 E 12TH ST

TULSA, OK 74112



## PROPERTY DESCRIPTION

Building Size: 9,840 Total

- 2,150 sf Office
- 5,290 sf Front Warehouse
- 2,400 sf Back Warehouse

Clear Height: 12' to 14'

Doors: 3 Grade Level

Docks: 1 Well Dock

Power: 480v, 3phase, 400 Amp

Yard: Approx. 7,000 sf - Fenced

Zoning: IM

## OFFERING SUMMARY

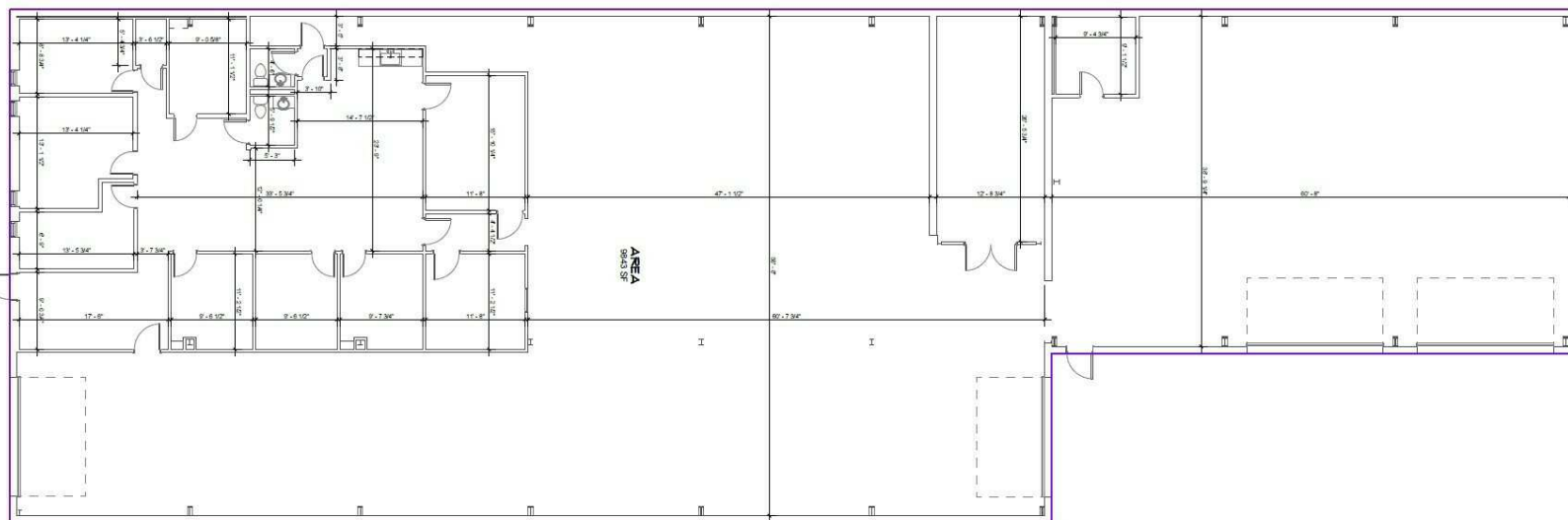
Lease Rate:	\$8.00 SF/yr (NNN)
Lot Size:	0.55 acres
Building Size:	9,840 SF

DEMOGRAPHICS	0.5 MILES	1 MILE	2 MILES
Total Households	944	4,244	17,367
Total Population	2,212	9,908	41,395
Average HH Income	\$59,989	\$59,858	\$60,816

### JOSH LOVE

jlove@priceedwards.com  
O: 918.394.1000 C: 918.978.2428

TULSA, OK 74112



## Floorplan

**JOSH LOVE**

jlove@priceedwards.com

O: 918.394.1000 C: 918.978.2428

6935 E 12TH ST

TULSA, OK 74112



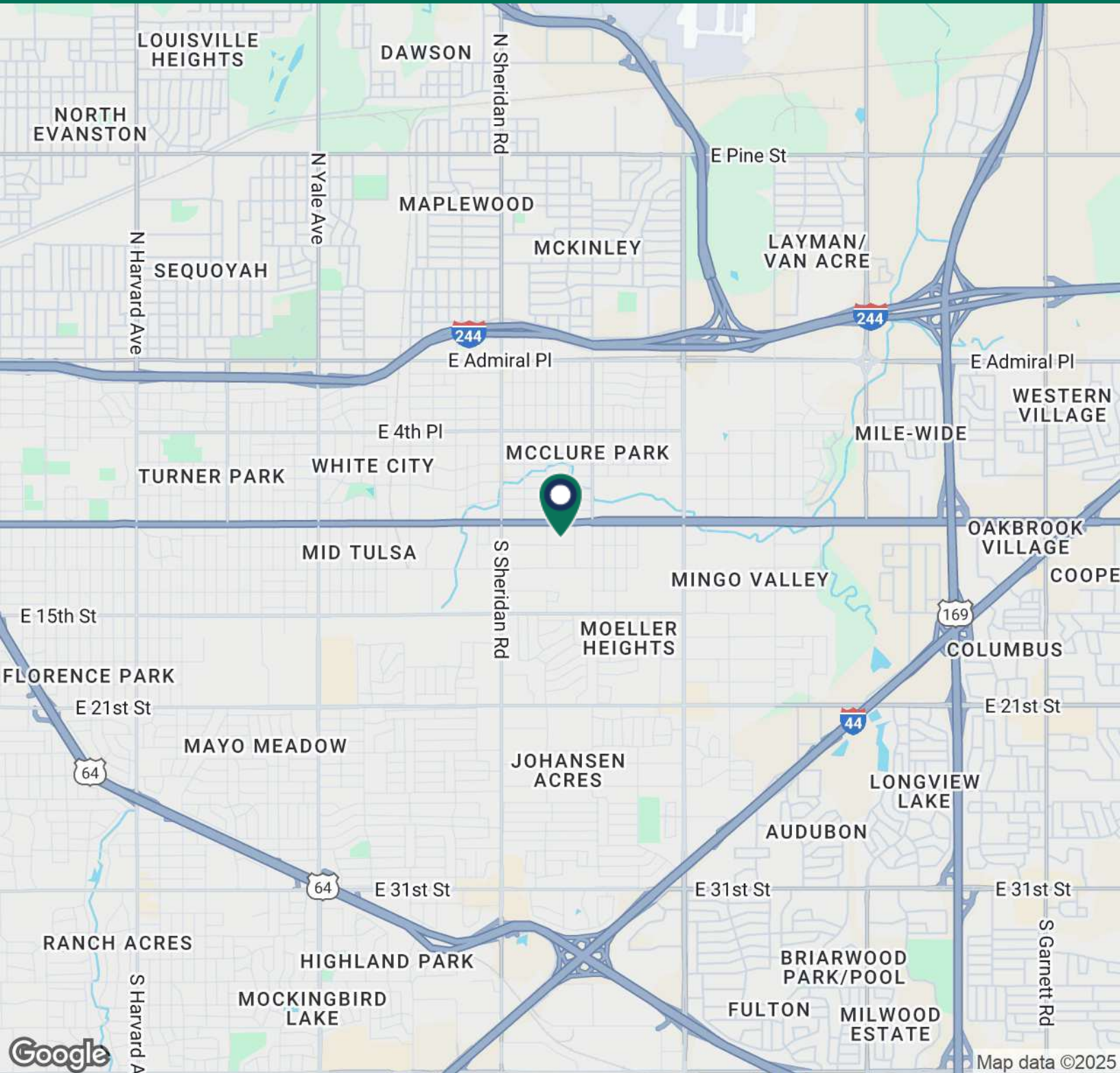
## JOSH LOVE

[jlove@priceedwards.com](mailto:jlove@priceedwards.com)

O: 918.394.1000 C: 918.978.2428

6935 E 12TH ST

TULSA, OK 74112



**JOSH LOVE**

[jlove@priceedwards.com](mailto:jlove@priceedwards.com)

O: 918.394.1000 C: 918.978.2428