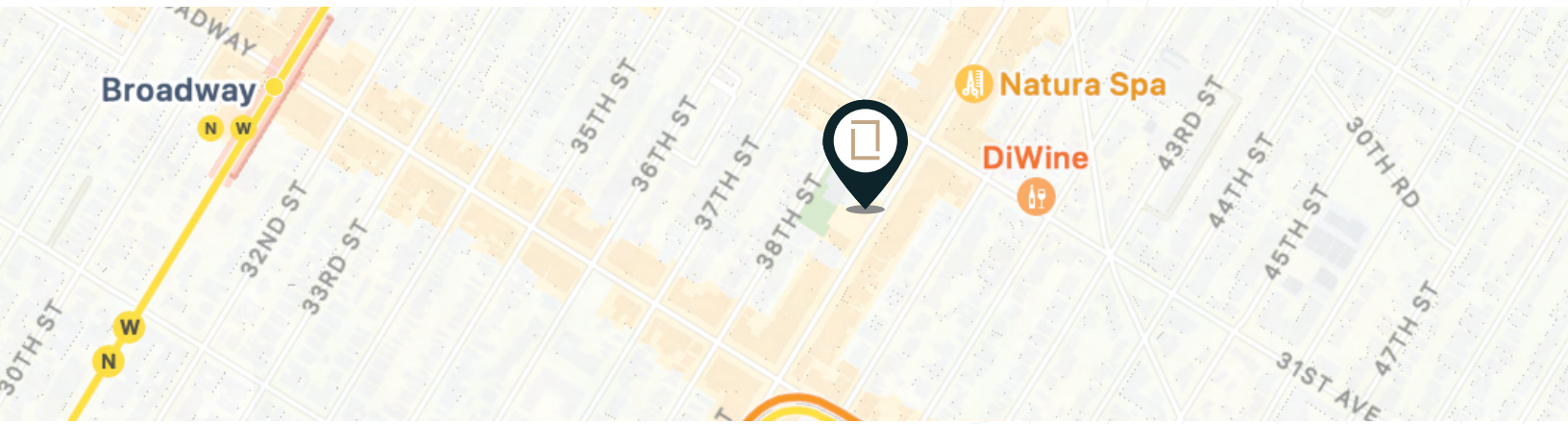


**NYSPACE  
FINDERS**



OFFICE FOR LEASE

**31-22 STEINWAY ST  
ASTORIA, NY 11103**



# LISTING BRIEF

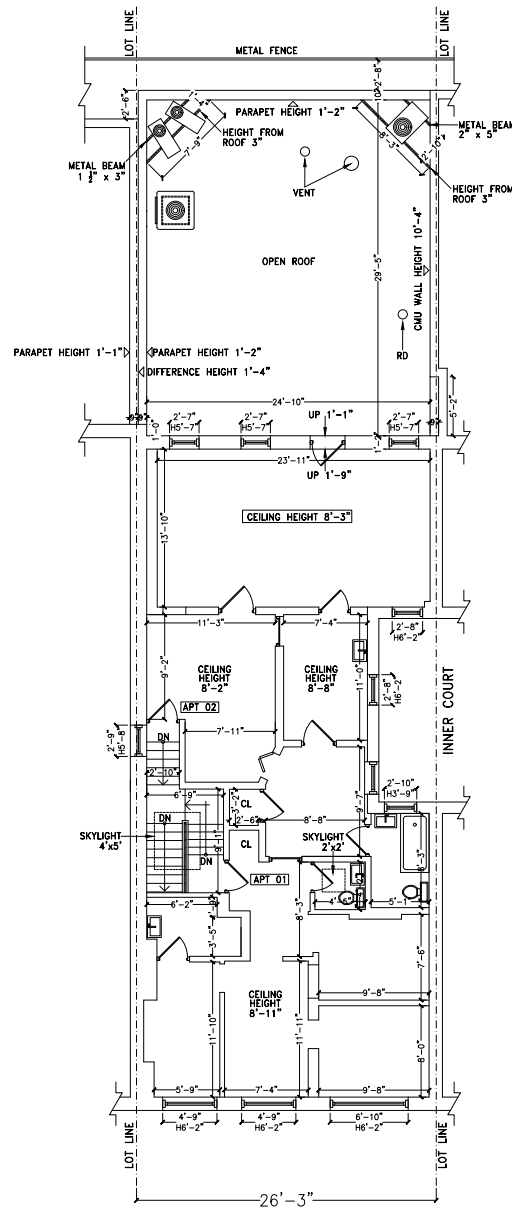
Discover this prime office space on one of Queens busiest high streets. Benefit from unparalleled visibility and accessibility and public transit. Join a thriving business community in one of NYC's most sought-after neighborhoods.

- **1,400 SF**
- **UNMATCHED LOCATION:**  
Lies in the commercial heart of Astoria
- **ACCESS TO:**  
The M, N, R & W trains
- **FOOT TRAFFIC:**  
Heavy car & pedestrian activity around location
- **PROXIMITY:**  
Surrounded by top front facing companies

# NEARBY BUSINESSES



# FLOOR PLAN



2ND. FLOOR PLAN (EXIST.)  
SCALE: 3/16



## CONTACT



**LUCA DICIERO**  
FOUNDER & CEO

(347) 242-0353  
luca@nyspacefinders.com



**FAISAL GILANI**  
ASSOCIATE BROKER

(925) 285-3075  
faisal@nyspacefinders.com



**DAMIAN DAKAS**  
LICENSED REAL ESTATE  
SALESPERSON

(516) 840-2002  
damian@nyspacefinders.com

All Information supplied in this marketing presentation and/or flyer is from sources deemed reliable and is furnished subject to errors, omissions, modifications, removal of listings from sale/lease and to any listing condition. Any square footage, dimensions, floor plans and/or technical data set forth are approximations and are subject to further elaboration/confirmation.