

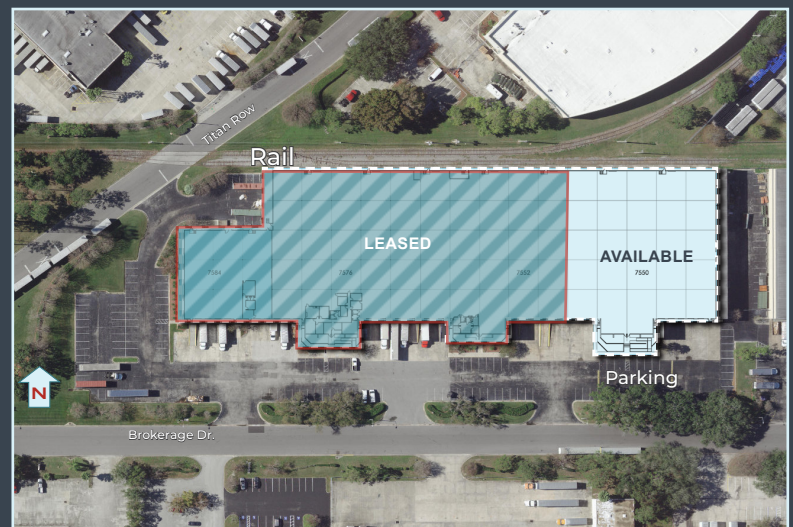


FOR SUBLEASE TERM 2/13/2027

ORLANDO CENTRAL PARK V

7550 BROKERAGE DRIVE • ORLANDO, FL 32809

- TOTAL AVAILABLE: 66,700± SQ. FT.
- 22' CLEAR HEIGHT | 40' X 40' COLUMN SPACING
- 200' BUILDING DEPTH | 110' TRUCK COURT
- 8 DOCK HIGH DOORS | 1 RAMPED DOOR
- (2) LEVELERS - (3) EOD'S
- T-5 LIGHTING WITH OCCUPANCY SENSORS
- WET SPRINKLER SYSTEM
- TILT-UP CONCRETE CONSTRUCTION
- PARKING RATIO: 1.12/1,000 SQ. FT.



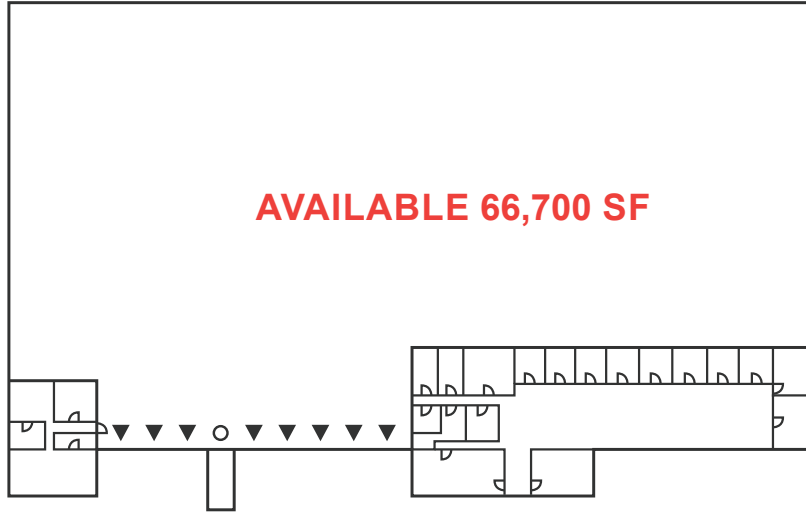
DAVID MURPHY
Vice Chairman
407 404 5020
david.murphy@cbre.com

MONICA WONUS
Executive Vice President
407 404 5042
monica.wonus@cbre.com

GABY GISSY
Associate
407 404 5012
gaby.gissy@cbre.com

SHARIF BAKER
Associate
407 404 5018
sharif.baker@cbre.com

7550 BROKERAGE DRIVE



66,700 SF

±9,250 SF

(8) 8'x10' Dock Doors

(2) Levelers - (3) EOD's

(1) 8'x10' Ramp Door

40'x40' Column Spacing

22' Clear Height

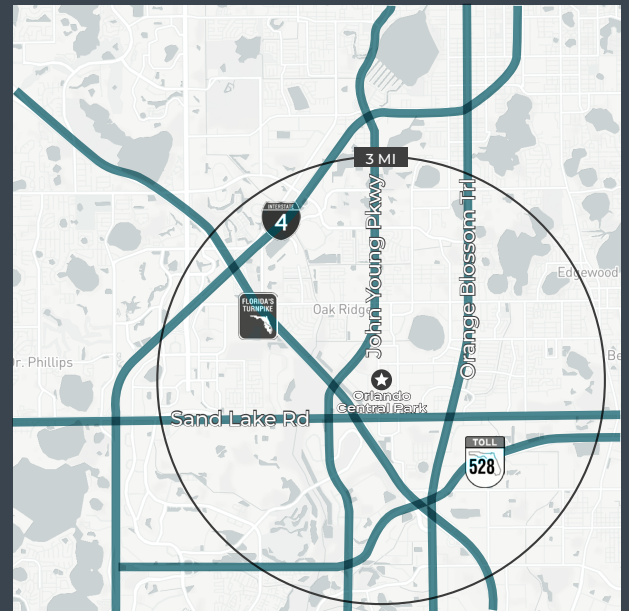
200' Building Depth

110' Truck Court

Sprinklers: Wet

LOCATION HIGHLIGHTS

- Located in the Orlando Central Park Submarket
- Immediate access to John Young Pkwy & Sand Lake Rd.
- 2.8 miles to the Florida Turnpike
- 2.8 miles to the Beachline Expressway (528)
- 4.5 miles to Interstate 4
- 7.8 miles to Orlando International Airport (OIA)



DAVID MURPHY

Vice Chairman
407 404 5020
david.murphy@cbre.com

MONICA WONUS

Executive Vice President
407 404 5042
monica.wonus@cbre.com

GABY GISSY

Associate
407 404 5012
gaby.gissy@cbre.com

SHARIF BAKER

Associate
407 404 5018
sharif.baker@cbre.com

CBRE