



Ilima Court

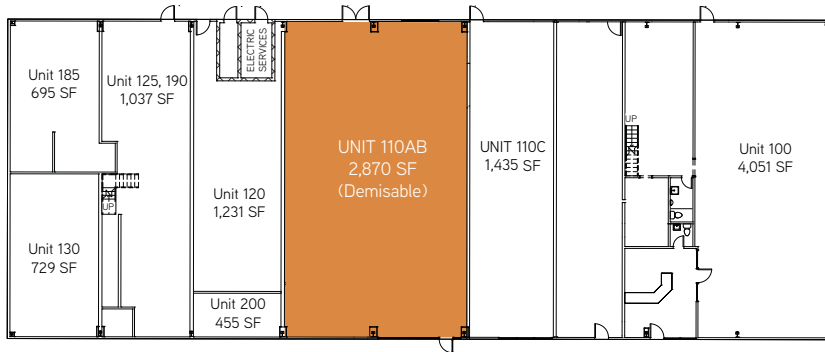
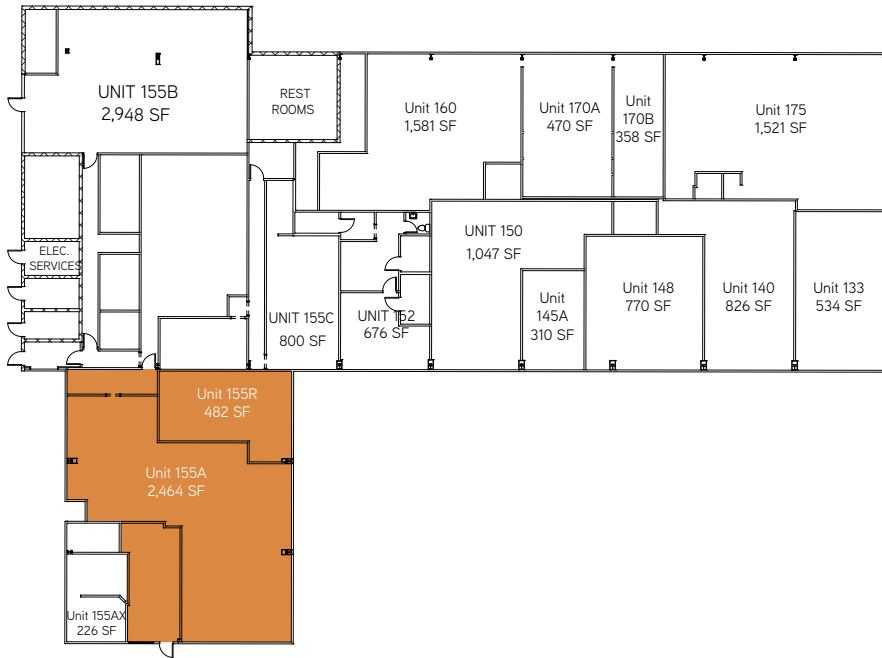
75-5629 Kuakini Highway, Kailua-Kona, HI 96740

PROPERTY DESCRIPTION

Great property located on one of the busiest corners in the heart of Kailua-Kona Town. Lots of visitor traffic from Alii Drive and King Kamehameha Marriott Hotel which is within walking distance. Plenty of parking for residents and visitors.



Ilima Court



Ilima Court

HIGHLIGHTS

Address:	75-5629 Kuakini Highway, Kailua-Kona, HI 96740
Base Rent:	Negotiable
Operating Expenses:	\$1.73 PSF/Mo. for spaces on chiller \$1.51 PSF/Mo. for spaces not on chiller (Estimated)
Zoning:	CV-10
TMK:	3-7-4-10-39
Term:	2 - 5 years preferred
Parking:	In common with other tenants
Land Area:	3.4 Acres
GLA:	27,735 SF

AVAILABILITIES

SPACE	SF	USE
Unit 110AB*	2,870 (Demisable)	Retail or Food Operations
Unit 155A	2,464	Retail/Entertainment/Restaurant
Unit 155R	482	Retail or Office

*Unit not on chiller

FOR LEASING, CONTACT:

DEBBIE PARMLEY (B) CCIM
 Vice President
 Investment & Leasing Services
 Lic# RB-21953
 808 987 7722
debbie.parmley@colliers.com

JOSHUA M. PARMLEY (S)
 Senior Associate
 Leasing Services
 Lic# RS-82162
 808 987 0547
joshua.parmley@colliers.com

220 South King Street, Suite 1800
 Honolulu, Hawaii 96813
colliers.com



This document/email has been prepared by Colliers for advertising and general information only. Colliers makes no guarantees, representations or warranties of any kind, expressed or implied, regarding the information including, but not limited to, warranties of content, accuracy and reliability. Any interested party should undertake their own inquiries as to the accuracy of the information. Colliers excludes unequivocally all inferred or implied terms, conditions and warranties arising out of this document and excludes all liability for loss and damages arising there from. This publication is the copyrighted property of Colliers and /or its licensor(s). © 2024. All rights reserved. This communication is not intended to cause or induce breach of an existing listing agreement.