

FOR LEASE: OUTPATIENT MEDICAL SPACE ON "PILL HILL"



Atlanta Medical Quarters

11,473 RSF Available

5555 Peachtree Dunwoody Road NE, Atlanta, GA 30342

Healthpeak® | **DOC
LISTED
NYSE**

SCOTT DUNKLE, VICE PRESIDENT - LEASING
414.367.5556 | SDunkle@healthpeak.com



PROPERTY OVERVIEW

Strategically located on "Pill Hill"—Atlanta's premier medical destination—the Medical Quarters professional condominium building offers prime medical suites featuring on-site property management.

The building includes a three-story lobby with natural light, indoor greenery, seating, and a pharmacy with convenient access to Interstate 285, GA-400, T. Harvey Mathis Parkway, and the MARTA Medical Center station.

CAMPUS SETTING

Located on Atlanta's "Pill Hill"

BUILDING DETAILS

11,473 RSF Available
Five Units Available

AVAILABLE

Suite G51: 3,260 RSF
Suite 120: 1,040 RSF
Suite 130: 1,035 RSF
Suite 135: 2,177 RSF
Suite 215: 3,961 RSF

ACCESS

Convenient access to I-285

ATLANTA MEDICAL QUARTERS

5555 PEACHTREE DUNWOODY RD, ATLANTA, GA 30342



LOCAL HOSPITALS

Located in the heart of Atlanta's most dynamic health care market, Pill Hill is known as an exceptional center for medical innovation and patient care. The area features three nationally acclaimed hospitals: Northside Hospital of Atlanta, Emory at Saint Joseph's, and Children's Healthcare of Atlanta at Scottish Rite. These hospitals provide a diverse array of services to residents in and around Atlanta's metropolitan area. In addition to the hospitals, there are hundreds of physician practices and outpatient centers within the area, all served by a dedicated MARTA station, Medical Center Station.

AREA OVERVIEW

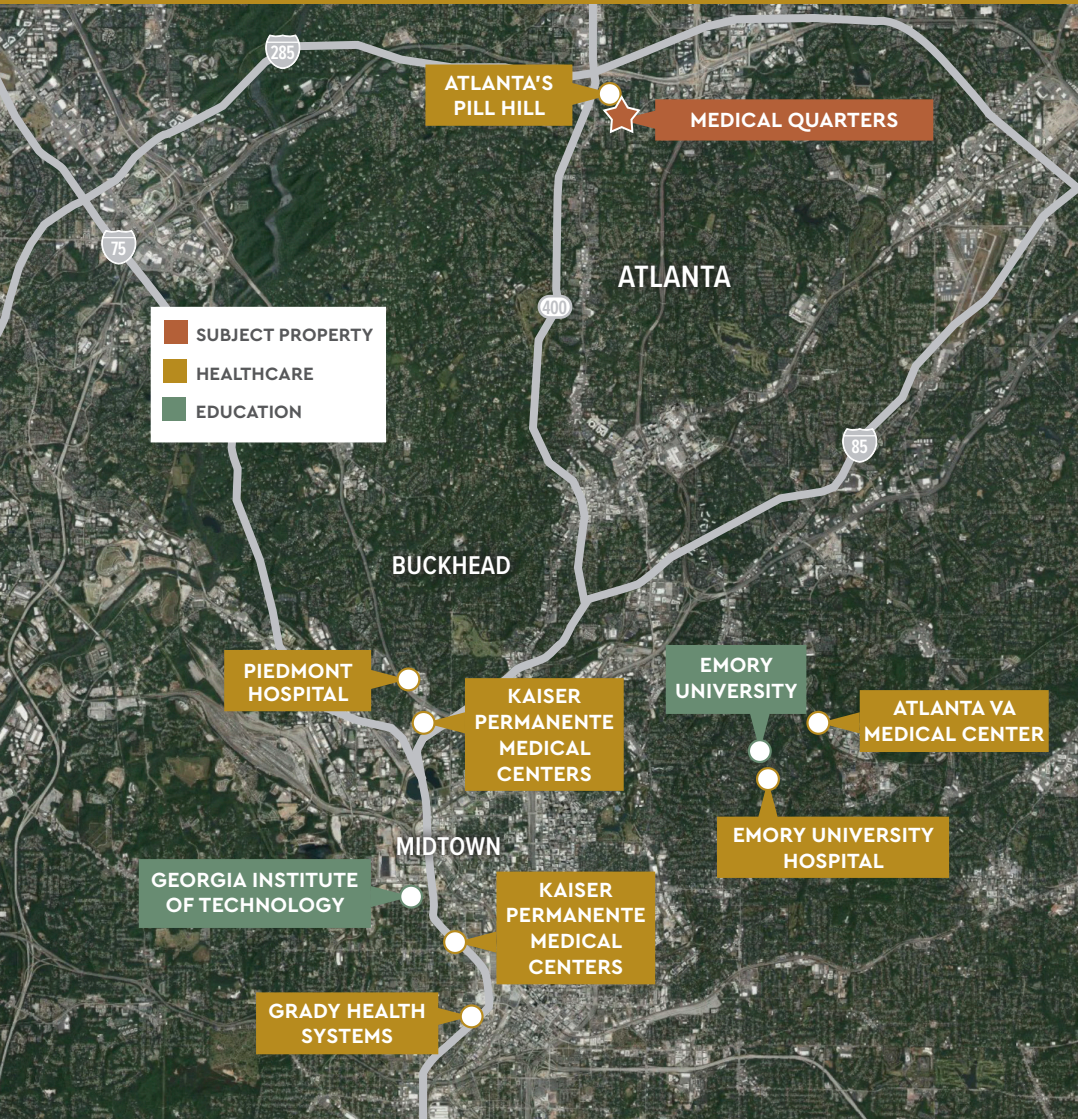
As the capital of Georgia and home to the world's most traveled airport, Hartsfield-Jackson Atlanta International Airport, Atlanta also has the country's third-largest concentration of Fortune 500 companies, including Coca-Cola, Delta Airlines, The Home Depot, UPS, Chick-fil-a, and Porsche. With more than 1.9 million jobs forecasted to be created by 2040 and the most affordable cost of living among the U.S.'s ten largest metro areas, this growing city offers a prime location for your medical practice.

Healthpeak® | **DOC**
LISTED
NYSE

SCOTT DUNKLE, VICE PRESIDENT - LEASING
414.367.5556 | SDunkle@healthpeak.com

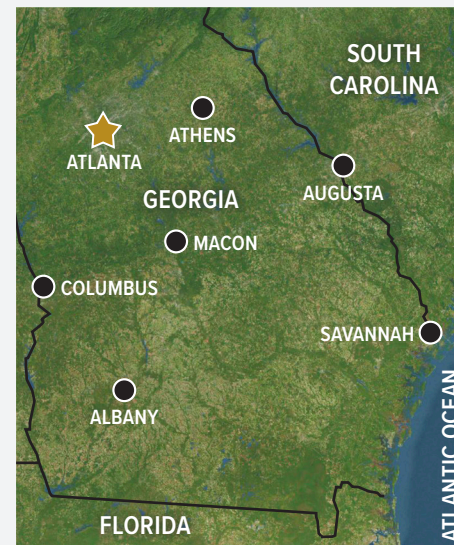
ATLANTA MEDICAL QUARTERS

5555 PEACHTREE DUNWOODY RD, ATLANTA, GA 30342



DEMOGRAPHICS

Distance	Total Population	Median Household Income
1-Mile	8,373	\$94,635
3-Miles	118,177	\$99,725
5-Miles	276,272	\$95,319



Area Healthcare

Athens, GA

- St. Mary's Health Care System
- Piedmont Athens Regional Medical Center
- Landmark Hospital of Athens

Augusta, GA

- Doctors Hospital of Augusta
- Charlie Norwood VA Medical Center
- Augusta University Medical Center

Columbus, GA

- Piedmont Columbus Regional Midtown
- Jack Hughston Memorial Hospital
- Piedmont Columbus Regional Northside
- St. Francis Medical Group

Macon, GA

- Atrium Health Navicent The Medical Center
- Piedmont Macon Medical Center
- Northside Hospital Cancer Institute Radiation Oncology - Macon

Savannah, GA

- Memorial Health University Medical Center
- Candler Hospital

Healthpeak® | **DOC**
LISTED
NYSE

SCOTT DUNKLE, VICE PRESIDENT - LEASING
414.367.5556 | SDunkle@healthpeak.com



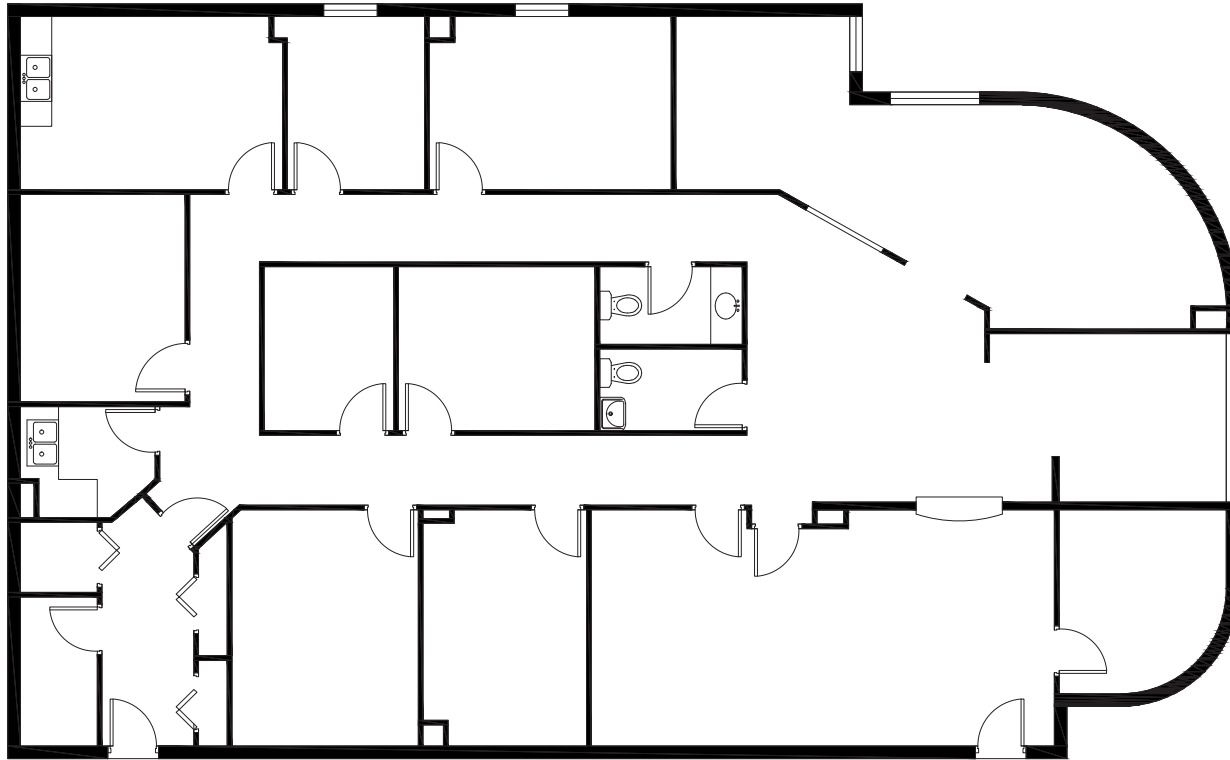
Example of finishes that can be replicated in any of the existing suites in the building.





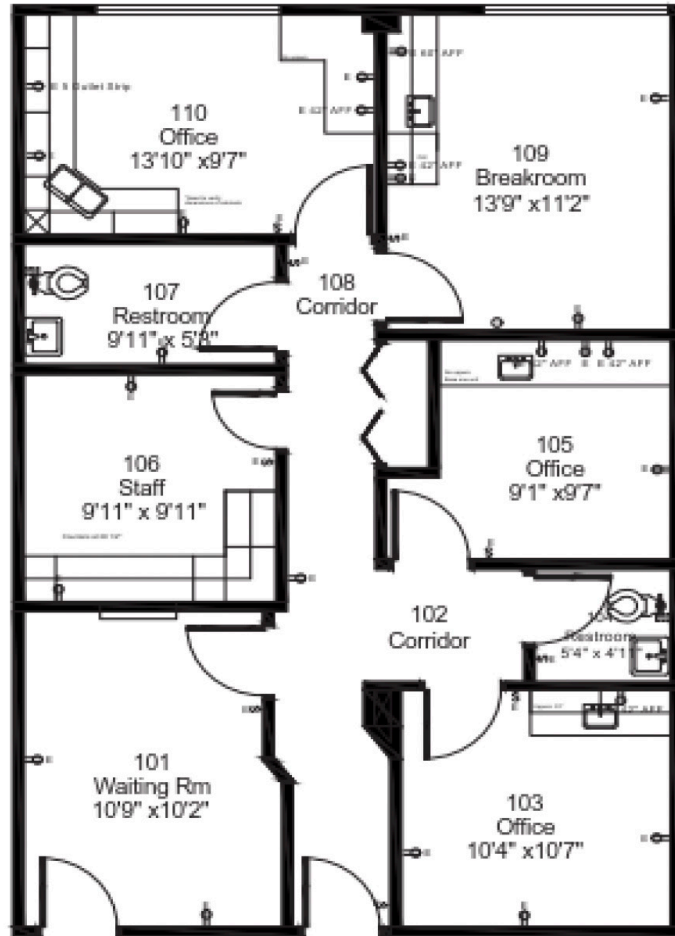
FIRST FLOOR

Suite 135
2,177 RSF



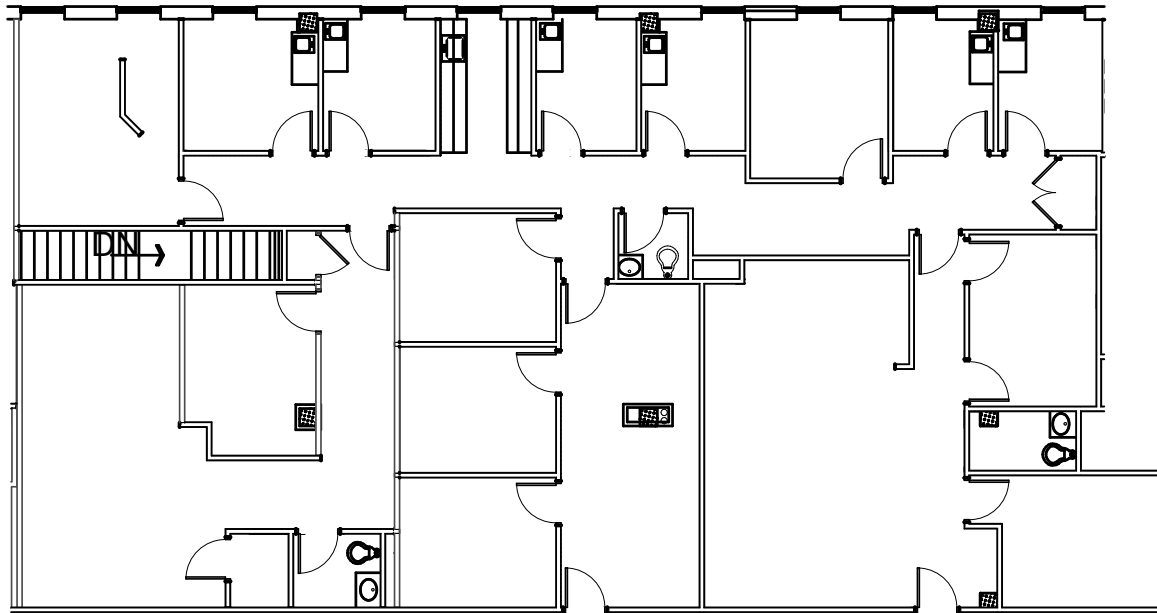
GROUND FLOOR

Suite G51
3,260 RSF



FIRST FLOOR

Suite 120
1,040 RSF



SECOND FLOOR

Suite 215
3,961 RSF

FIRST FLOOR

Suite 130
1,035 RSF

No floor plan available.



Healthpeak® | DOC
LISTED
NYSE

SCOTT DUNKLE
Direct 414.367.5556
Mobile 407.620.1496
SDunkle@healthpeak.com