

New Lower Lease Rate

1270 Doris Rd

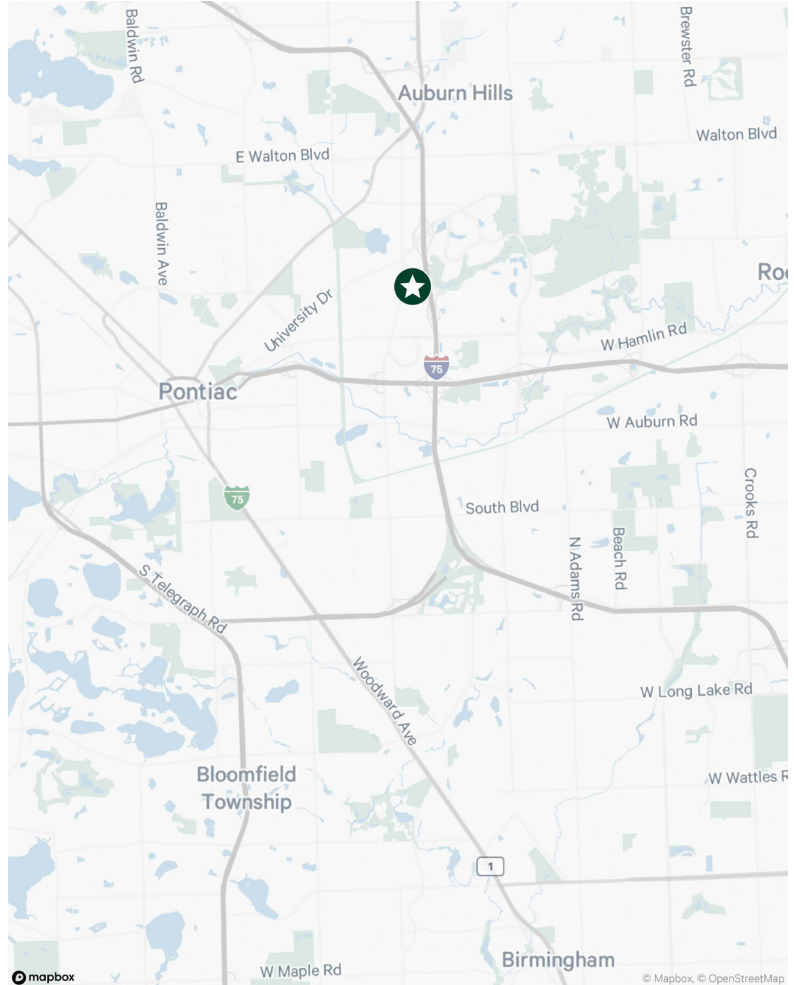
Auburn Hills, MI

33,500 SF | 4+ Acres | For Sale Or Lease



Property Features

- + 33,500 SF on 4.05 Acres
 - Landlord Will Customize Interior Layout To Suit
- + One (1) Grade Level Door
- + One (1) Truckwell
- + Clear Height: 14'
- + Fully Air Conditioned & Fire Suppressed
- + Over 200 Parking Spaces (6.00/1,000 SF)
- + Zoning: T&R
- + Lease Rate: \$5.95/SF NNN **(AS IS)**
- + Sale Price: Contact Listing Agent



Contact Us

Matt Osiecki

First Vice President
+1 248 351 2079
matt.osiecki@cbre.com

Joe Kemp

Vice President
+1 248 936 6892
joe.kemp@cbre.com

Matt Croswell

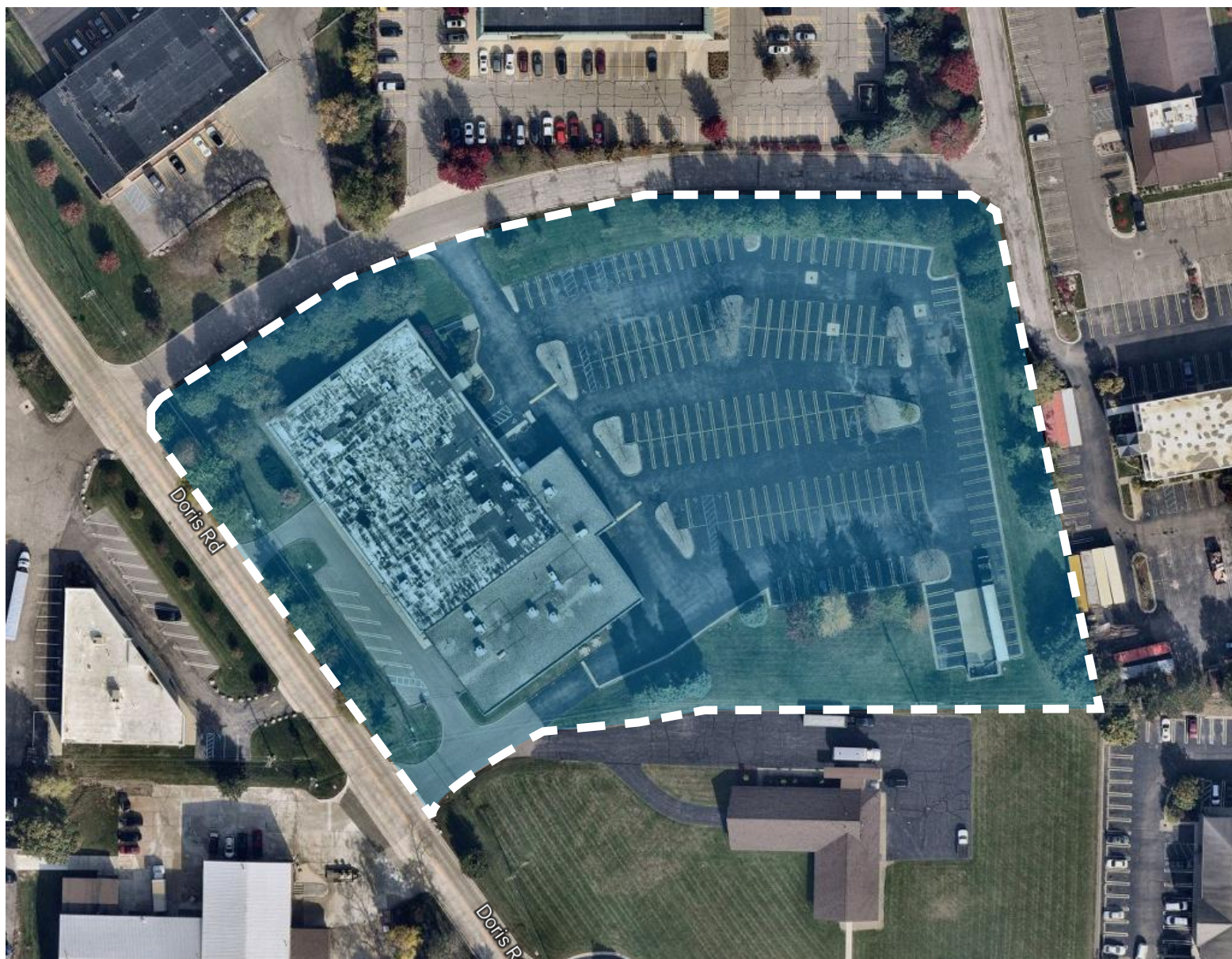
First Vice President
+1 248 351 2084
matt.croswell@cbre.com

© 2025 CBRE, Inc. All rights reserved. This information has been obtained from sources believed reliable but has not been verified for accuracy or completeness. CBRE, Inc. makes no guarantee, representation or warranty and accepts no responsibility or liability as to the accuracy, completeness, or reliability of the information contained herein. You should conduct a careful, independent investigation of the property and verify all information. Any reliance on this information is solely at your own risk.

1270 Doris Rd
Auburn Hills, MI

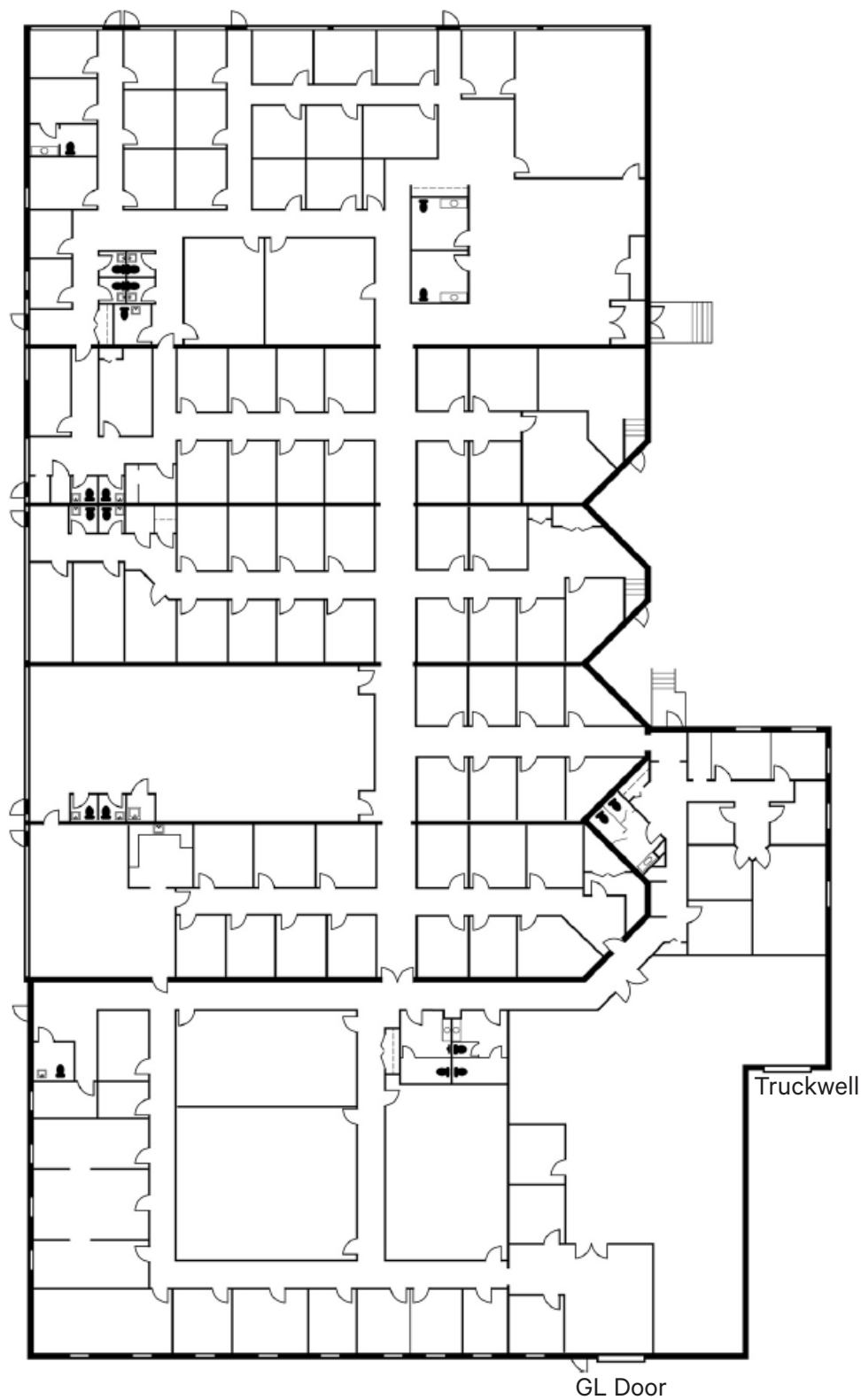
For Lease or Sale

Property Aerial

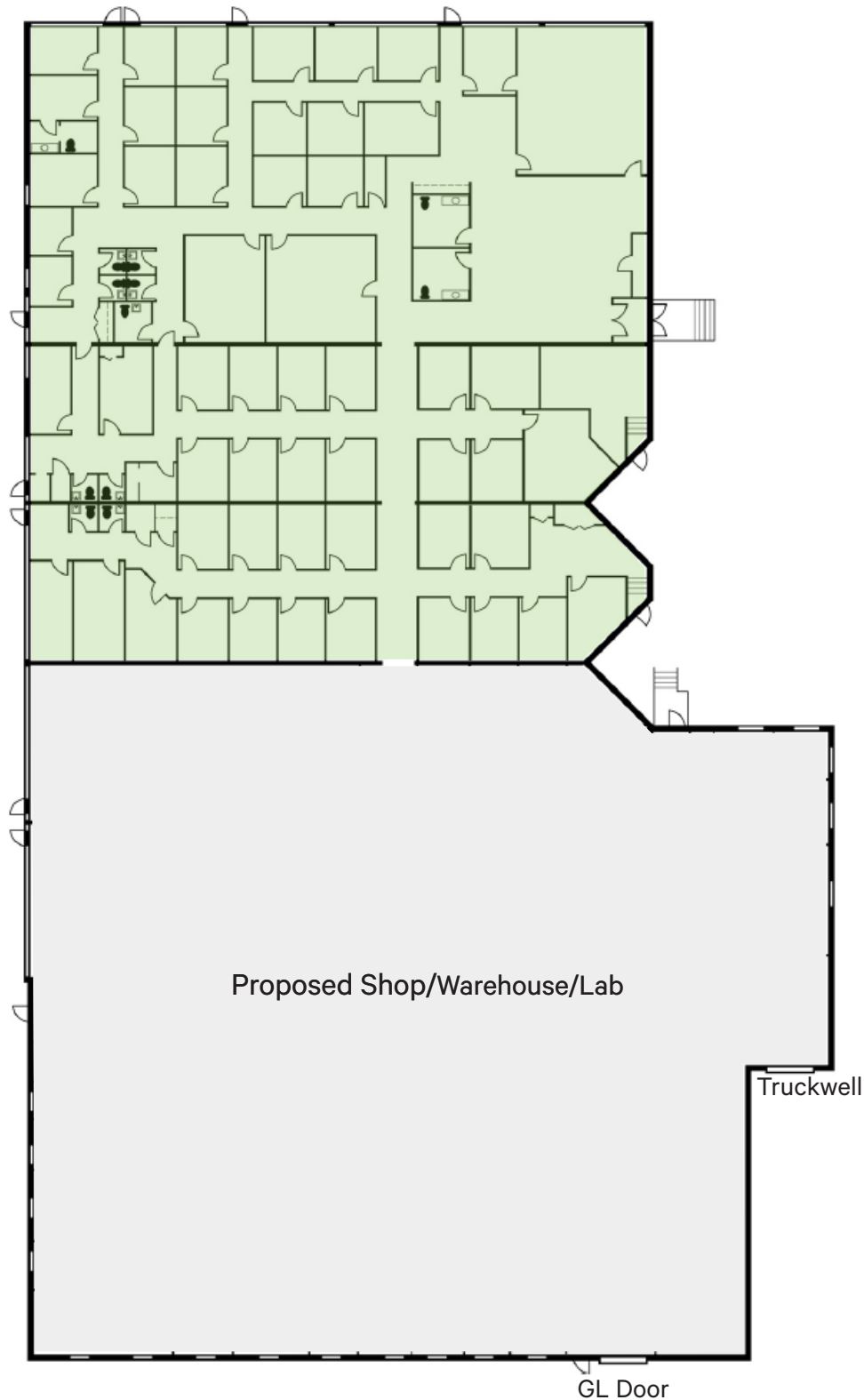


© 2025 CBRE, Inc. All rights reserved. This information has been obtained from sources believed reliable but has not been verified for accuracy or completeness. CBRE, Inc. makes no guarantee, representation or warranty and accepts no responsibility or liability as to the accuracy, completeness, or reliability of the information contained herein. You should conduct a careful, independent investigation of the property and verify all information. Any reliance on this information is solely at your own risk.

Current Floor Plan



Conceptual Floor Plan



Conceptual Floor Plan

