



OUTPARCELS AVAILABLE

I-75 and SR 47 | Lake City , FL 32025

Property Highlights

- ▶ 675' feet of frontage along SR 47
- ▶ Pads available from 1-acre to 5-acres
- ▶ 1/4 mile from I-75 (61,500 AADT) at the first lighted intersection North of I-75
- ▶ State Road 47 is the main N/S thoroughfare through downtown Lake City connecting I-75, US Hwy 41, US Hwy 441 & I-10
- ▶ Population of 27,147 within a 5-mile radius of subject site
- ▶ Demographics include an average income of more than \$92,000 and a population over 27,000 within a 5-mile radius

DEMOGRAPHICS

Population



3 Mile	7,712
5 Mile	27,147
7 Mile	43,422

Household Income



3 Mile	\$100,198
5 Mile	\$92,895
7 Mile	\$87,797

Households



3 Mile	3,010
5 Mile	10,669
7 Mile	16,942

Daytime Demos



Businesses	Employees	Daytime Population
3 Mile 363	3 Mile 1,846	3 Mile 4,115
5 Mile 1,729	5 Mile 12,942	5 Mile 22,113
7 Mile 2,624	7 Mile 19,986	7 Mile 35,843

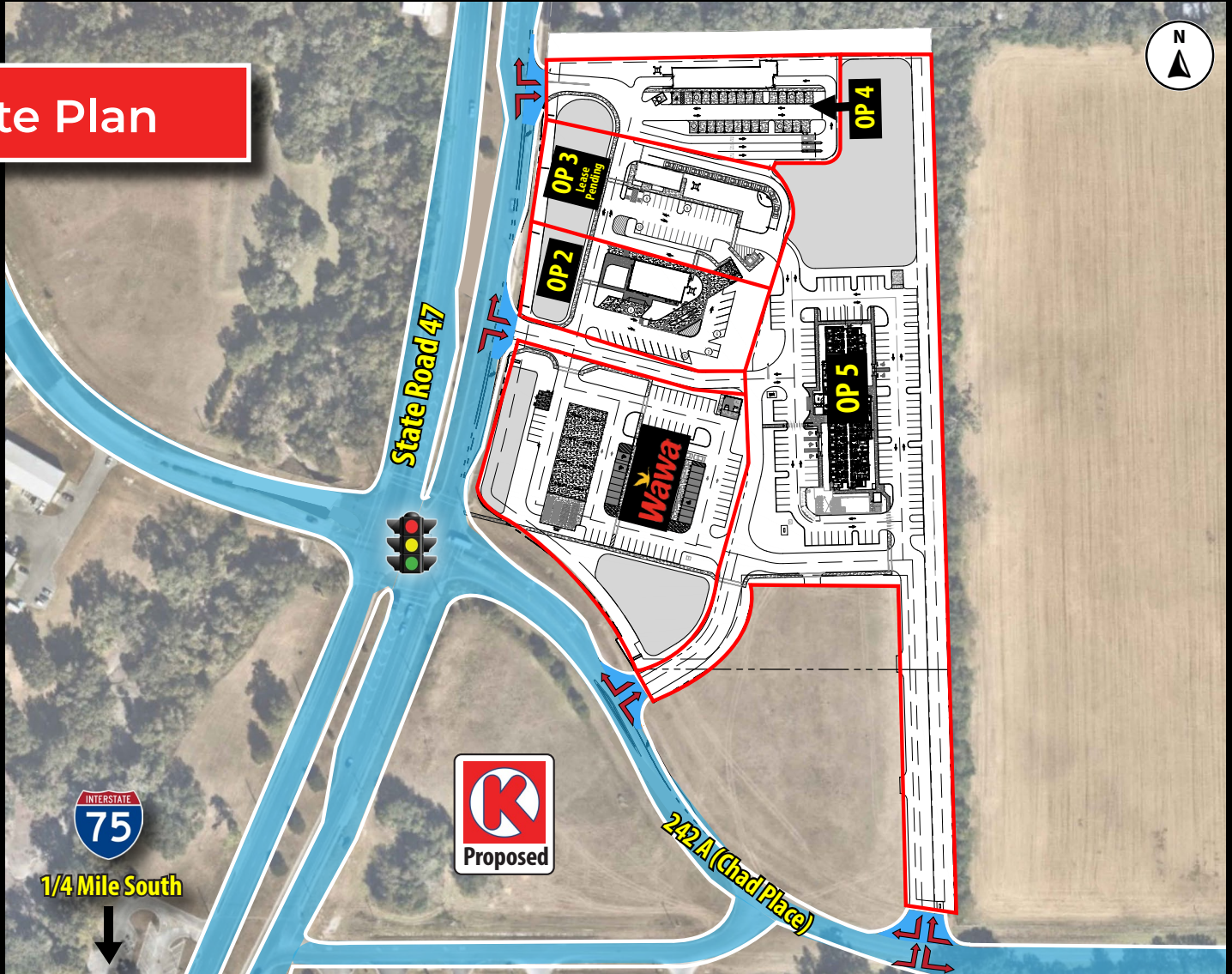
CALL FOR DETAILS 813-712-3068

OUTPARCELS AVAILABLE

I-75 and SR 47 | Lake City , FL 32025



Site Plan



All information given herein is obtained from sources considered reliable. However, we are not responsible for misstatement of facts, errors, omissions, prior sale, withdrawal from market, modification of mortgage commitment, terms and considerations, or change in price without notice. The information supplied herein is for informational purposes only and shall not contain a warranty or assurance that said information is correct. Any person intending to rely upon the information supplied herein should verify said information independently. **UPDATED: 051625**

Brandon Eggleston
813 712 3068
brandon@rmcpg.com

8902 N Dale Mabry Hwy
Tampa, FL 33614
800 728 5379
www.RMCPG.com