

Office Space For Lease

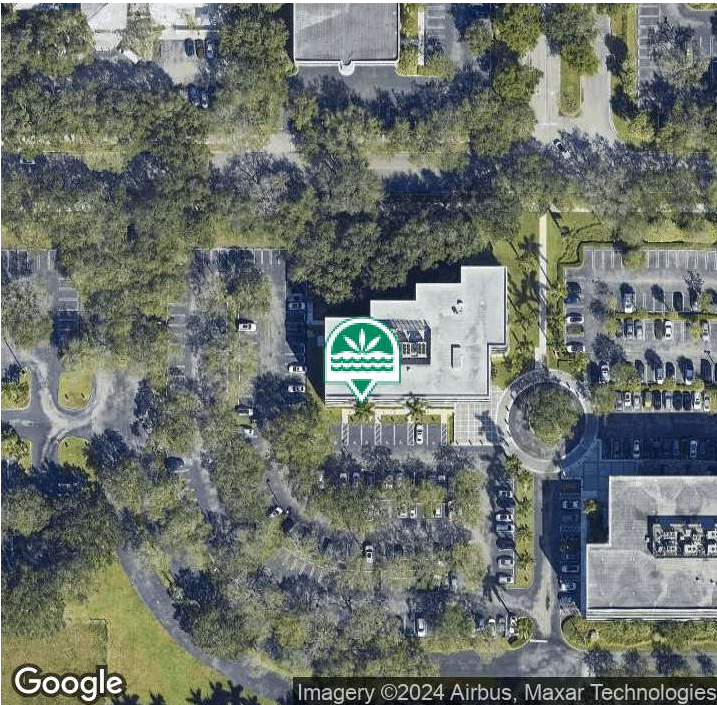
Governors Square: Spessard Holland Building

8000 Governors Square Blvd.

Miami Lakes, FL 33016



SUITE 301, 302, 303, 304, 305



PROPERTY DESCRIPTION

Spessard Holland is a 4-story multi-tenant building overlooking Graham Dairy Lake in Miami Lakes Business Park West. Located near the entrance of the business park, this building offers the perfect business location for employees to commute to work and take advantage of the major amenities of the park. Amenities include restaurants, daycare facilities, and Miami Lakes Picnic Park West, all within walking distance of the business park. Parking is available at 4/1000 SF at no charge.

OFFERING SUMMARY

| | |
|----------------|---------------------|
| Lease Rate: | \$21.50 SF/yr (NNN) |
| Cam/Taxes: | \$11.93 / \$2.27 |
| Available SF: | 10,771 SF |
| Building Size: | 53,115 SF |

For More Information Contact:

Philip Wyllie

Director of Leasing

954.257.7953

philipw@grahamcos.com

Office Space For Lease

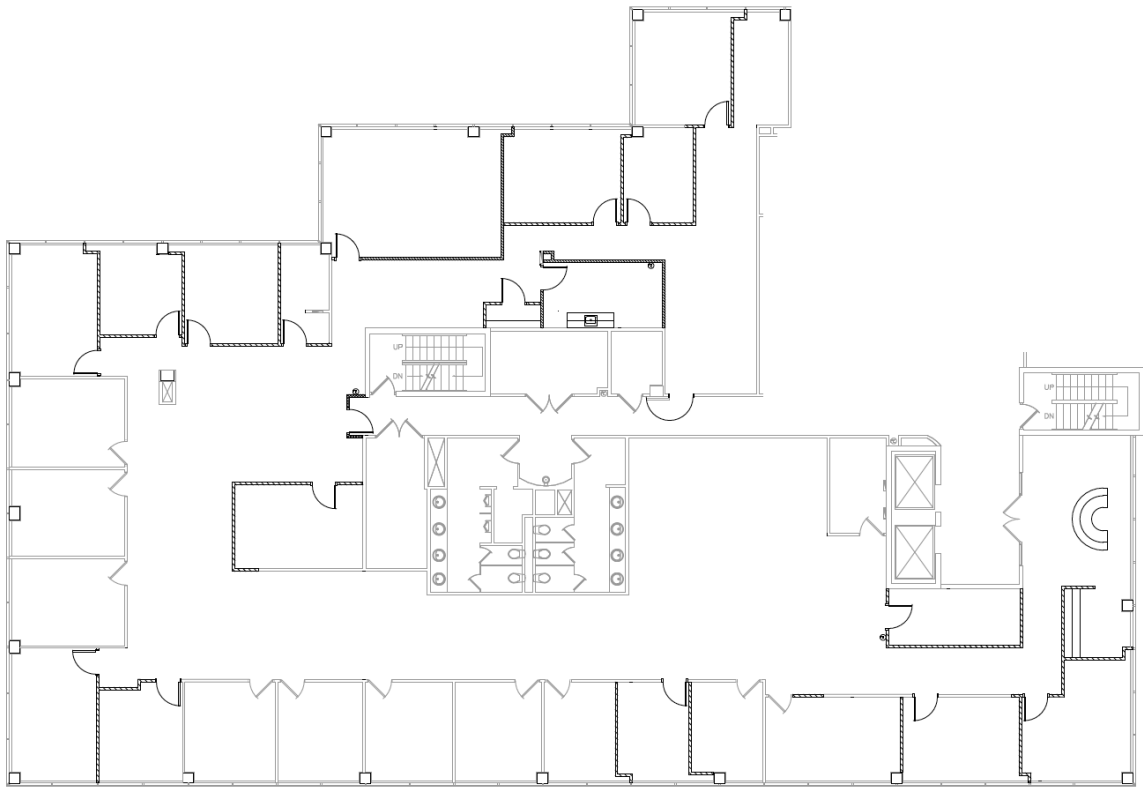
Governors Square: Spessard Holland Building

8000 Governors Square Blvd.

Miami Lakes, FL 33016



FLOOR PLAN



For More Information Contact:

Philip Wyllie

Director of Leasing

954.257.7953

philipw@grahamcos.com

Office Space For Lease

Governors Square: Spessard Holland Building

8000 Governors Square Blvd.
Miami Lakes, FL 33016



ADDITIONAL PHOTOS



For More Information Contact:

Philip Wyllie

Director of Leasing

954.257.7953

philipw@grahamcos.com

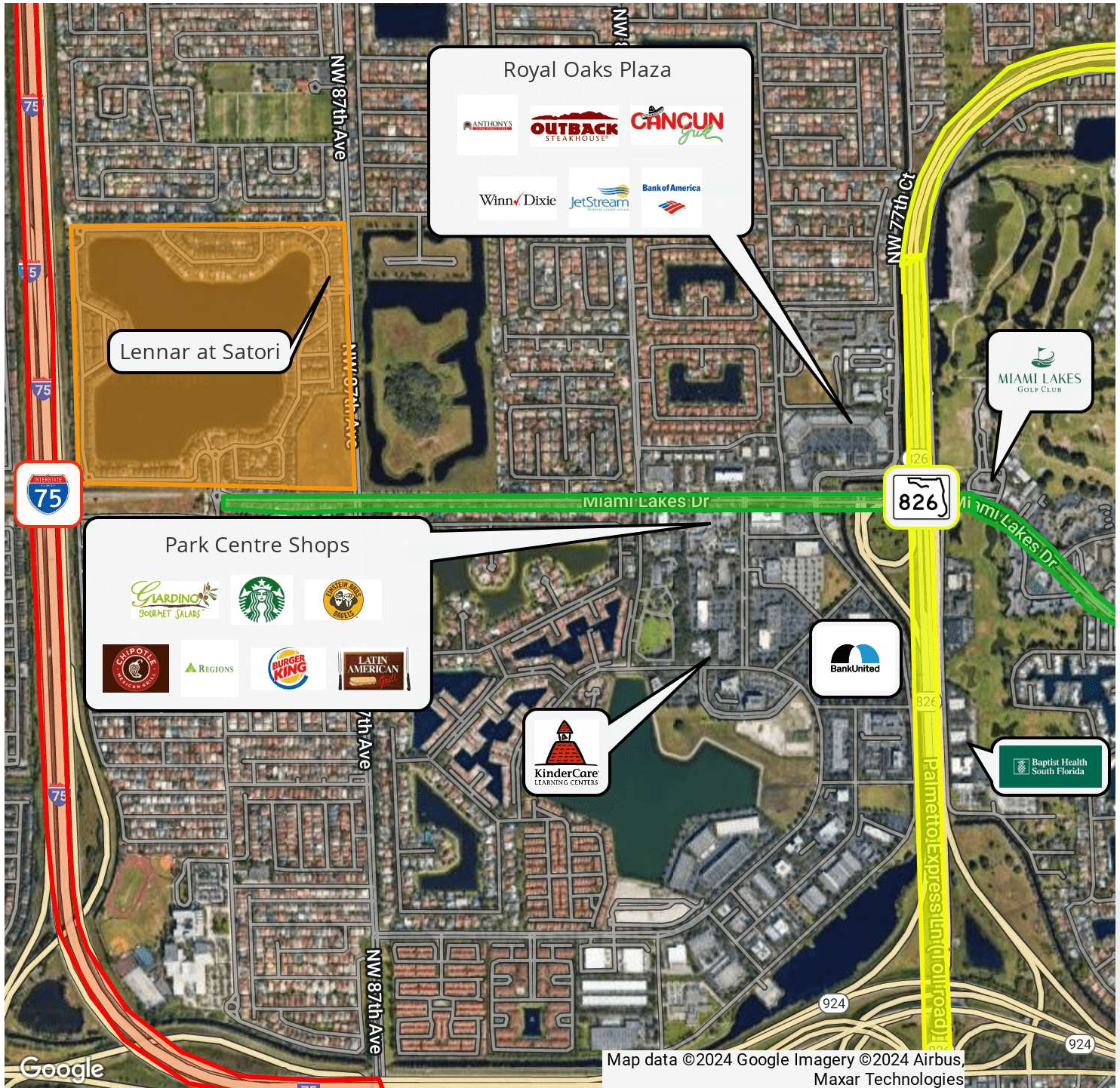
Office Space For Lease

Governors Square: Spessard Holland Building

8000 Governors Square Blvd.
Miami Lakes, FL 33016



RETAILER MAP BUSINESS PARK WEST



For More Information Contact:

Philip Wyllie

Director of Leasing

954.257.7953

philipw@grahamcos.com