



- **Space Available:**

Building 4: Units 19 +/-1,063 SF
-\$33.00/SF Modified Gross

Building 7: Unit 36 +/-1,960 SF
-\$33.00/SF Modified Gross

- Former PGA Headquarter buildings, well-located within Sawgrass Village; walking distance to restaurants, shopping and hotels
- Ample parking on the surrounding surface lot
- Multiple entrances for ease of access
- Floor plan can be modified subject to need, credit and length of term

2025 Demographics	1 Mile	3 Mile	5 Mile
Estimated Population	7,375	24,633	44,205
Average HH Income	\$161,740	\$226,333	\$218,338
Daytime Total Employees	4,844	13,035	22,480

**For Additional
Information Contact:**

Kate Clifford
kate@strategicsites.com

Katie Kirchner
katiek@strategicsites.com

JC Clifford
jcc@strategicsites.com



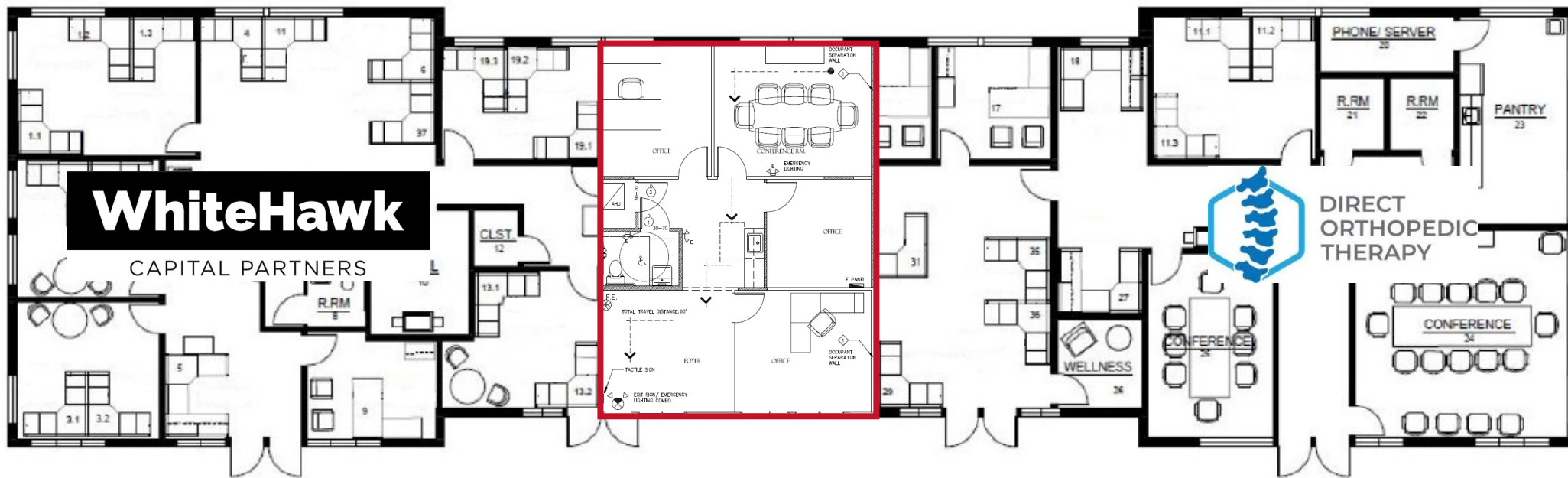
422 Jacksonville Drive, Jacksonville Beach, FL ~ 904-242-2828 ~ www.strategicsites.com

Client First through Service, Knowledge and Integrity

Notice of Disclaimer: Details contained herein are believed to be correct: the information is subject to errors, omissions, price changes, or withdrawal without notice

Floor Plan

Building 4: Unit 19 +/-1,063 SF



#19
+/-1,063 SF
Proposed Floor

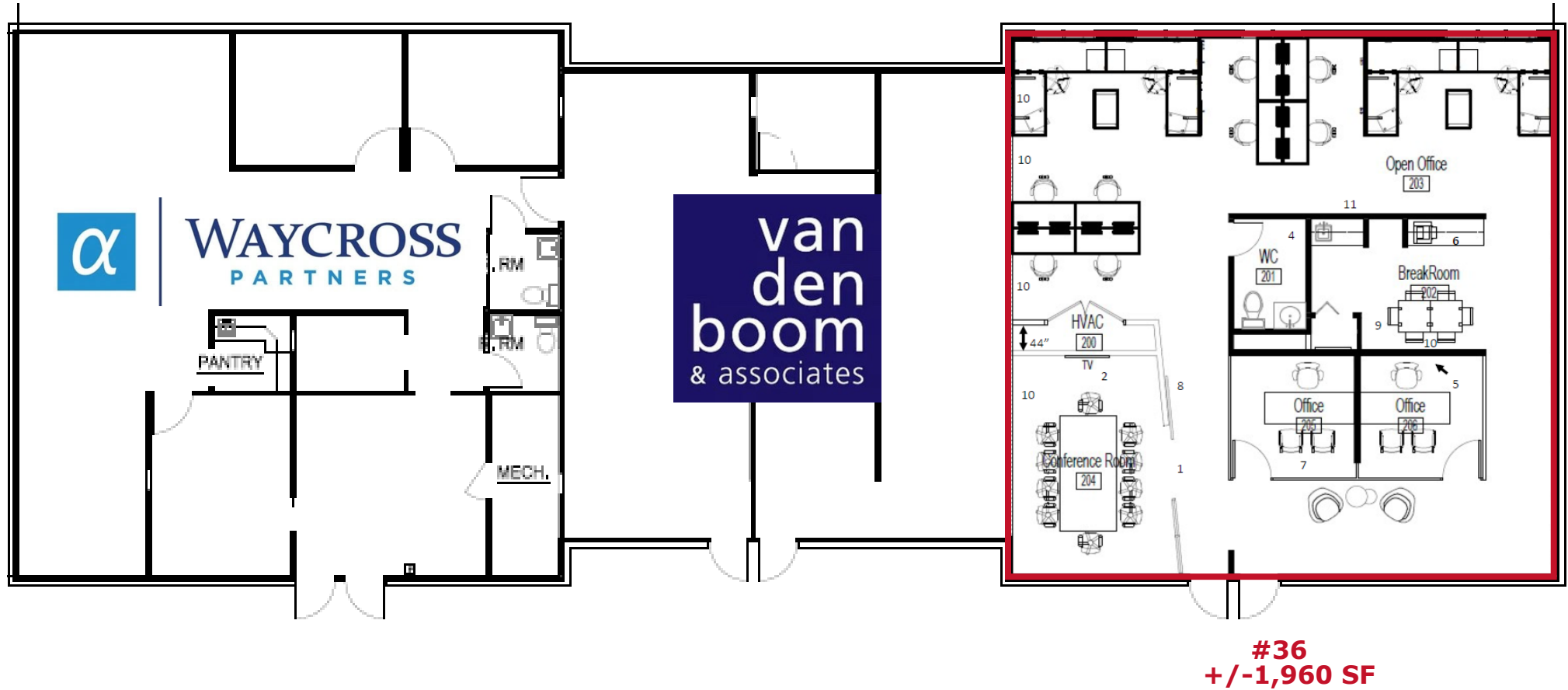
422 Jacksonville Drive, Jacksonville Beach, FL ~ 904-242-2828 ~ www.strategicsites.com

Client First through Service, Knowledge and Integrity

Notice of Disclaimer: Details contained herein are believed to be correct: the information is subject to errors, omissions, price changes, or withdrawal without notice

Floor Plan

Building 7: Unit 36 +/-1,960 SF



422 Jacksonville Drive, Jacksonville Beach, FL ~ 904-242-2828 ~ www.strategicsites.com

Client First through Service, Knowledge and Integrity

Notice of Disclaimer: Details contained herein are believed to be correct: the information is subject to errors, omissions, price changes, or withdrawal without notice

Site Plan

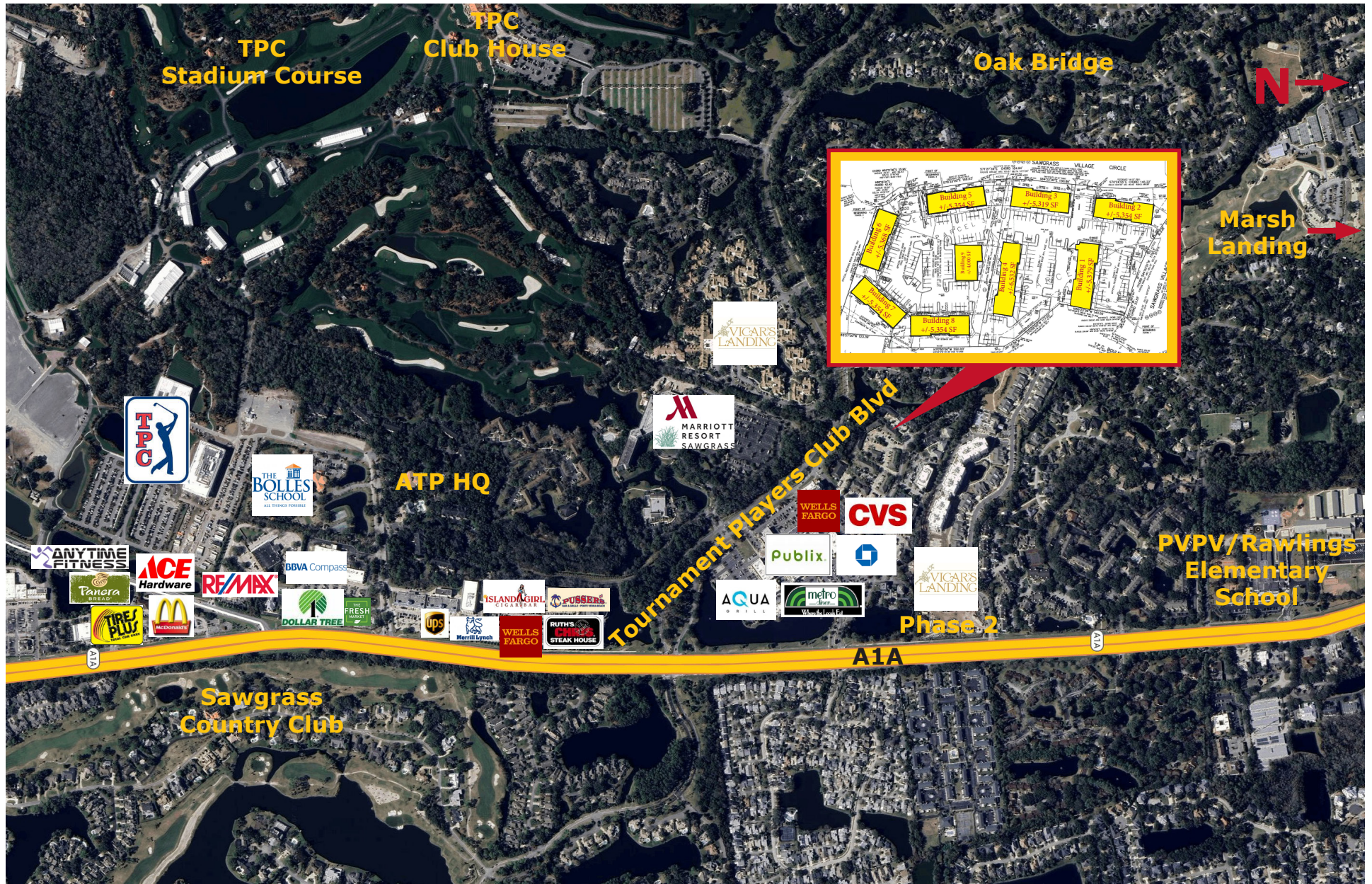


422 Jacksonville Drive, Jacksonville Beach, FL ~ 904-242-2828 ~ www.strategicsites.com

Client First through Service, Knowledge and Integrity

Notice of Disclaimer: Details contained herein are believed to be correct: the information is subject to errors, omissions, price changes, or withdrawal without notice

Aerial



422 Jacksonville Drive, Jacksonville Beach, FL ~ 904-242-2828 ~ www.strategicsites.com

Client First through Service, Knowledge and Integrity

Notice of Disclaimer: Details contained herein are believed to be correct: the information is subject to errors, omissions, price changes, or withdrawal without notice