



## CONTACT

**Steven Frei**

208.339.1052

steve@idahobp.com

**Brent Butikofer**

208.589.1222

brent@idahobp.com

Office: 208.881.9694

www.idahobp.com

## THE PROPERTY:

Newly constructed Class A office building conveniently located just off Sunnyside between Washington Parkway and Hitt Road, on Saratoga Drive. This building consists of approximately 6000 SF of office space consisting of 3 separate suites with private entrances. The property offers a monument marque for tenant signage and has abundant onsite parking. Its convenient location makes it ideal for office users needing to be close to other ancillary services, eateries and retail shops, or medical users needing to be close to EIRMC.





## Property Features:

- Total building approx. 6000 SF
- 3 separate suites
- Each suite contains its own private foyer entrance
- Tenant signage on existing monument sign
- Conveniently located close to services, eateries and retail shops
- Located in the heart of Idaho Falls medical community



## CONTACT

**Steven Frei** - 208.339.1052  
steve@idahobp.com

**Brent Butikofer** - 208.589.1222  
brent@idahobp.com

Office: 208.881.9694  
www.idahobp.com





## CONTACT

**Steven Frei**

208.339.1052

steve@idahobp.com

**Brent Butikofer**

208.589.1222

brent@idahobp.com

Office: 208.881.9694

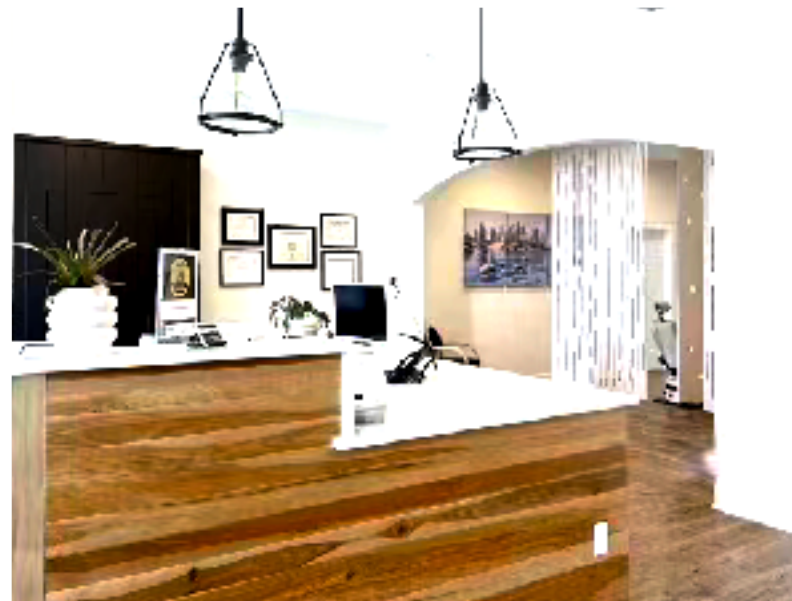
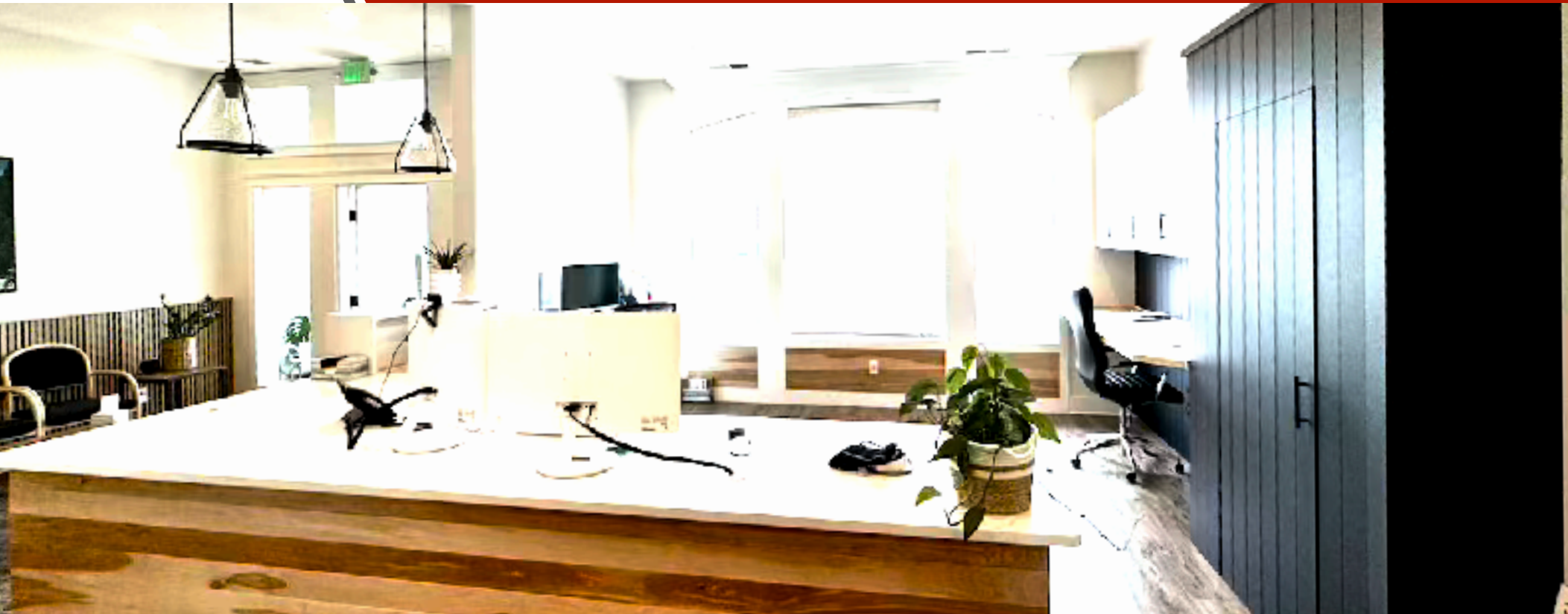
www.idahobp.com



## LOCATION:

Located just off Sunnyside between Washington Parkway and Hitt Road, on Saratoga Drive





## CONTACT

**Steven Frei**  
208.339.1052  
steve@idahobp.com

**Brent Butikofer**  
208.589.1222  
brent@idahobp.com

Office: 208.881.9694  
www.idahobp.com