

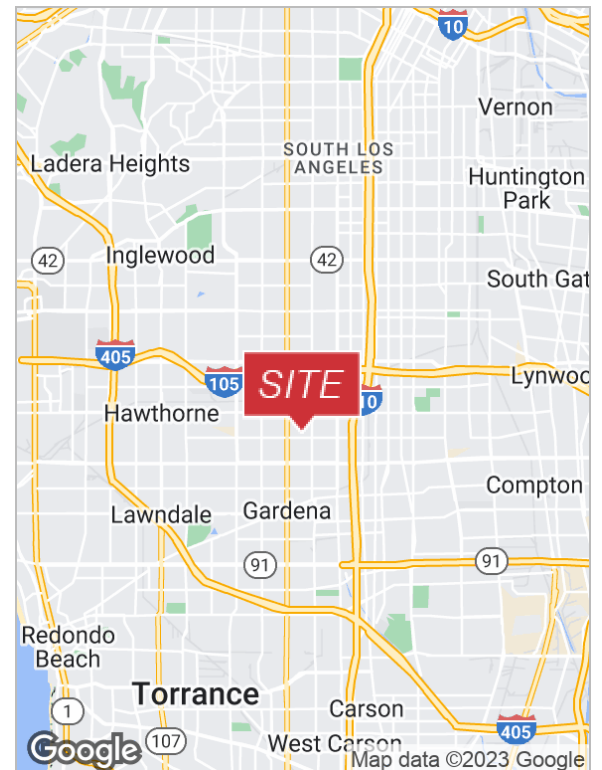


1538-1542 W. 134th Street

Gardena, California 90249

Lease Highlights

- 2-Lots Zoned Industrial
- 34,130± SF of Land
- Two Gates, One is Motorized
- Great Industrial Location
- Block Wall Fence and Concrete Pavement
- Easy Access to 110, 91 & 405 Freeways
- Existing 3,200± SF Metal Building



For more information

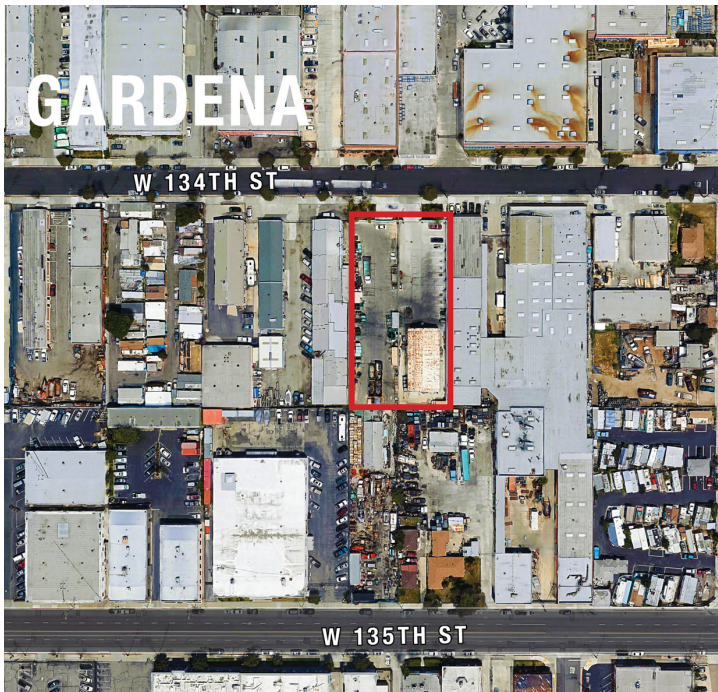
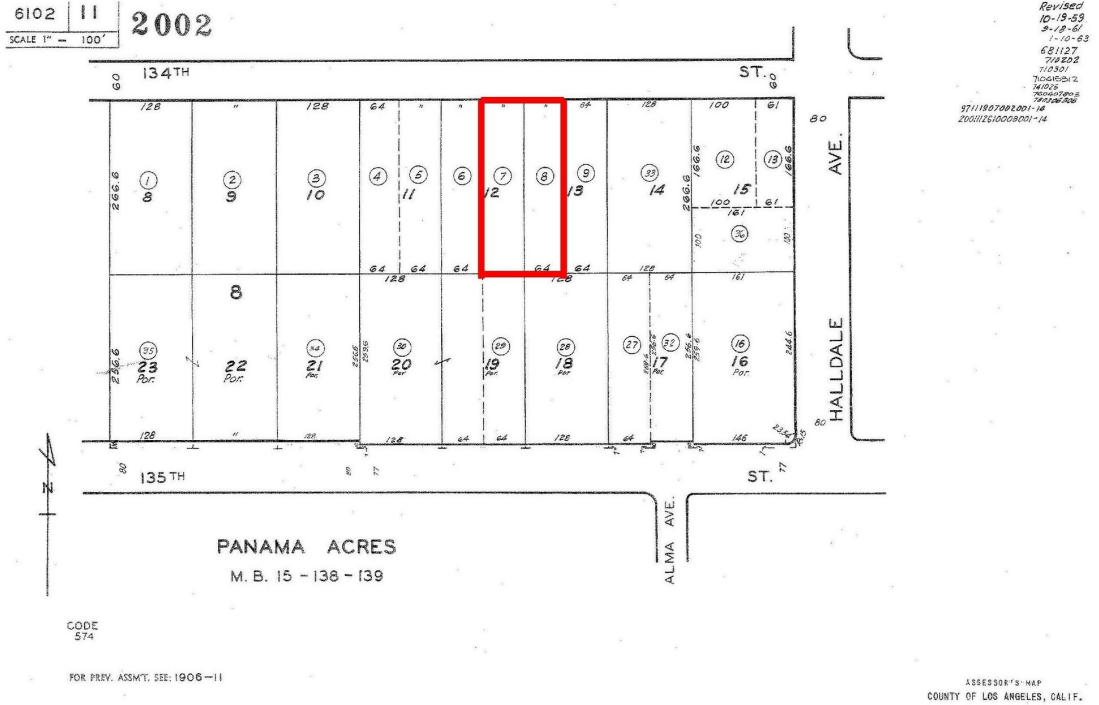
Sheri Messerlian

O: 310.436.1762

smesserlian@naicapital.com | CalDRE #00450571

For Lease

1538-1542 W. 134th Street



Property Highlights:

- 2- Continuous Lots With Industrial Zoning
- Great Location for Industrial Use
- Close Proximity to LAX and Both Ports of Long Beach and Los Angeles.
- There is a 3,200 SF Metal Building Negotiable Lease Term
- Call Broker for Showing Instructions
- Do Not Disturb Tenant

Sheri Messerlian

310.436.1762

smesserlian@naicapital.com

CalDRE #00450571