



For Sale or Lease
Office Space Available
Union Square
San Francisco

490 POST STREET, SUITE 939

San Francisco, CA 94102

PRESENTED BY:

**CATHERINE HOUSE, CRE,
CCIM, FRICS**

O: 415.464.6401

catherineh@svn.com

CalDRE #01327824

PROPERTY SUMMARY



OFFERING SUMMARY

SALE PRICE:	\$1,018,000 (\$895 PSF)
LEASE RATE:	\$5/SF/FS (\$5,680/MO)
AVAILABLE SF:	1,136 SF
YEAR BUILT:	1925
RENOVATED:	2009
ZONING:	C-3-G

PROPERTY OVERVIEW

This suite has been extensively remodeled with lots of natural light & operable windows. The suite also contains an ADA, handicap accessible restroom. Medical office and professional office uses are permitted. Operable windows with lots of natural light. This is a commercial condominium in the rarely available 490 Post Street building.

PROPERTY HIGHLIGHTS

- Gorgeous, light-filled office with operable windows
- Handicap accessible restroom inside suite (in addition to common area)
- Open 24/7 with building security
- Great transportation links, Powell St. BART & Muni nearby, & Cable-Car route
- Monthly/daily/hourly paid parking available in the building
- Multiple parking garages within a block

CATHERINE HOUSE, CRE, CCIM, FRICS

O: 415.464.6401

catherineh@svn.com

CalDRE #01327824

INTERIOR PHOTOS SUITE 939



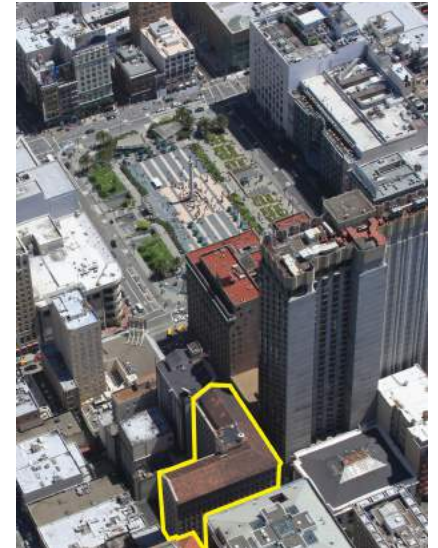
CATHERINE HOUSE, CRE, CCIM, FRICS

O: 415.464.6401

catherineh@svn.com

CalDRE #01327824

EXTERIOR PHOTOS SUITE 939



CATHERINE HOUSE, CRE, CCIM, FRICS

O: 415.464.6401

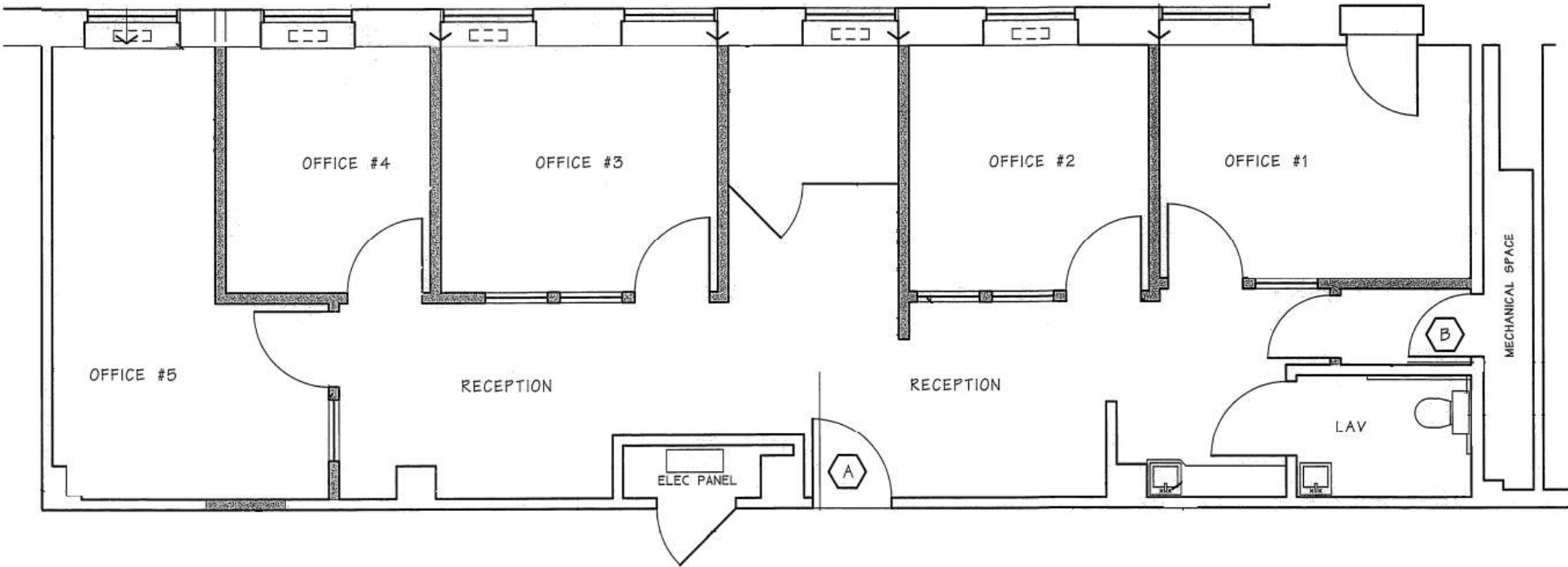
catherineh@svn.com

CalDRE #01327824

FOR SALE OR LEASE: OFFICE SPACE IN UNION SQUARE, SAN FRANCISCO | 490 Post Street, Suite 939

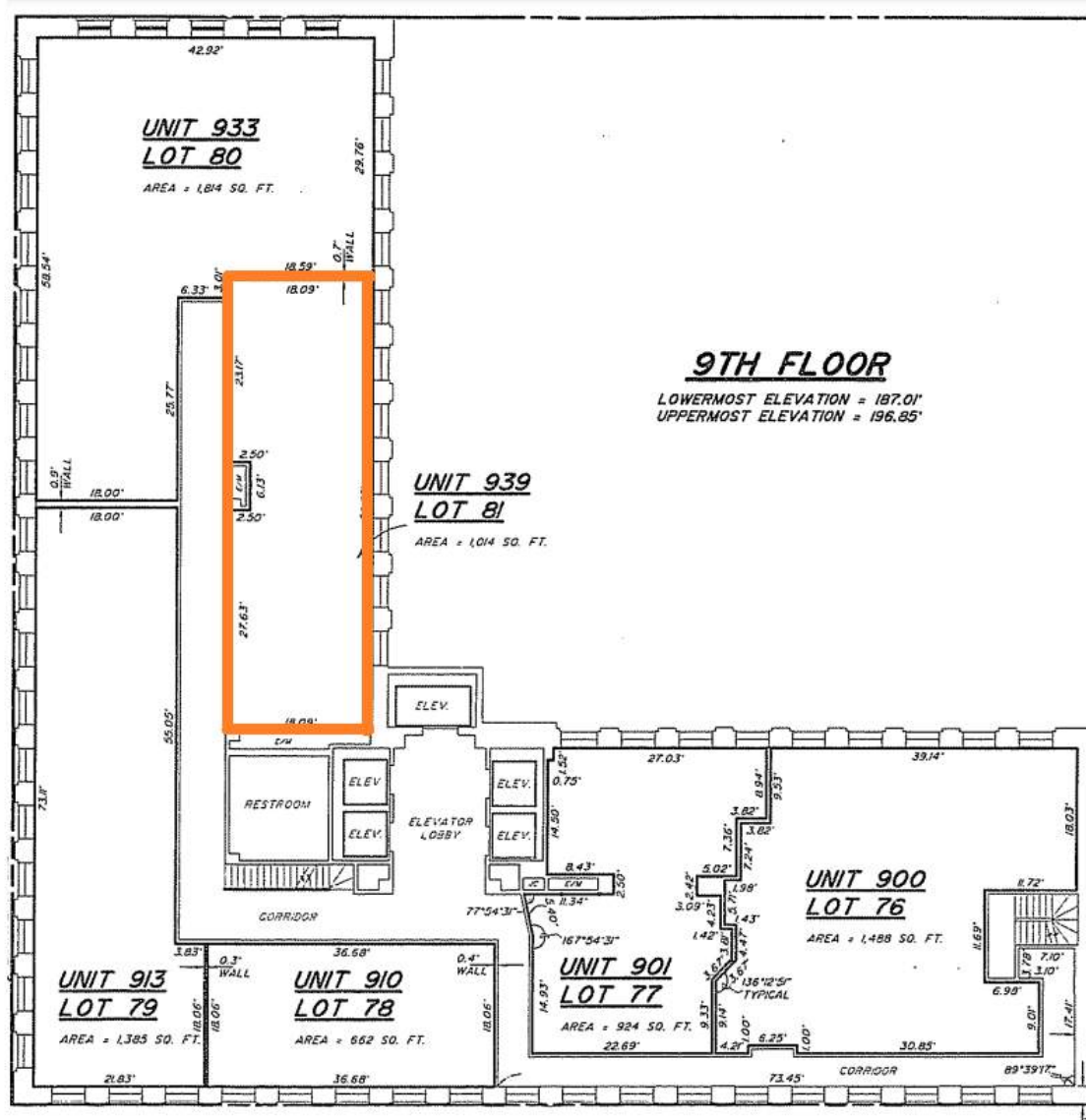
SVN | CAPITAL WEST PARTNERS

FLOOR PLAN - SUITE 939



CATHERINE HOUSE, CRE, CCIM, FRICS
O: 415.464.6401
catherineh@svn.com
CaDRE #01327824

9TH FLOOR PLAN



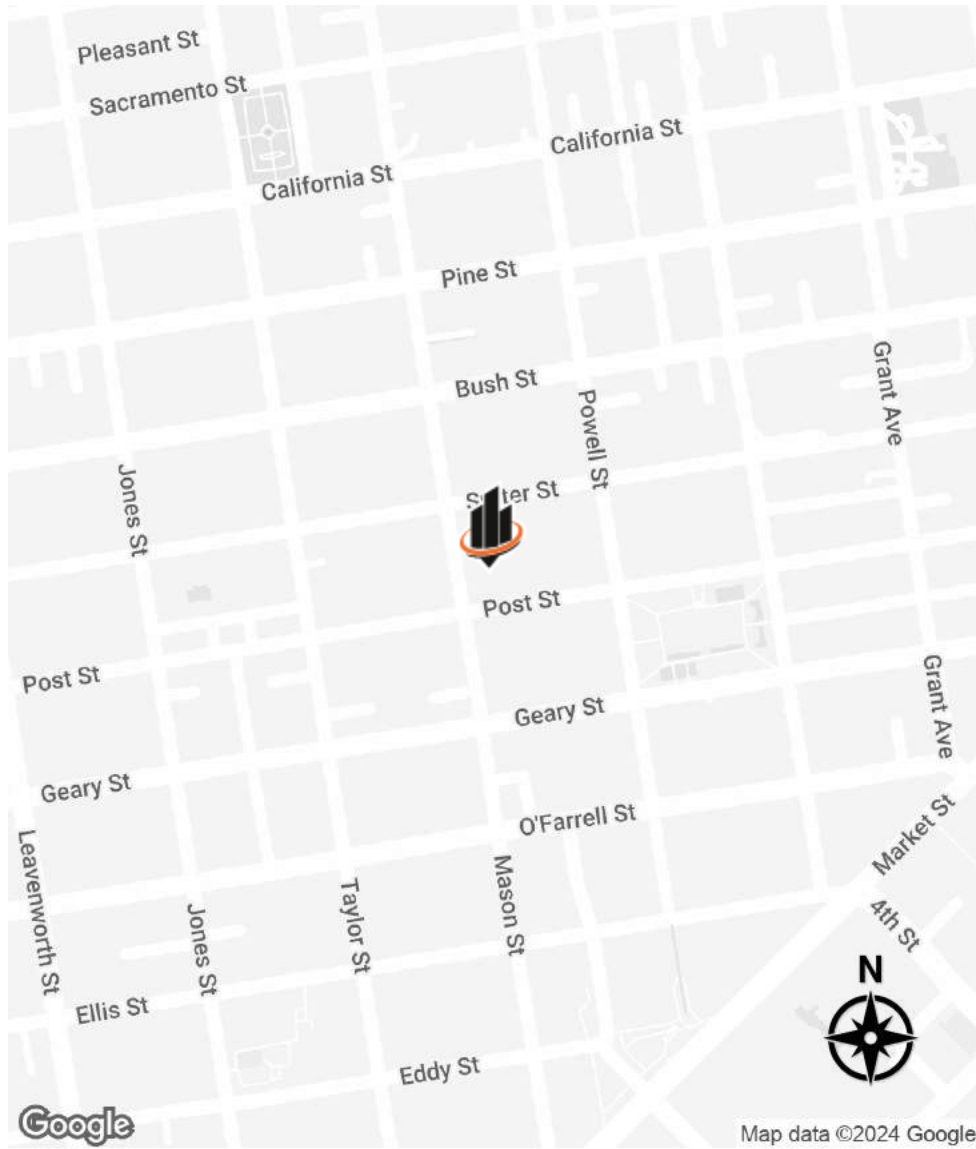
CATHERINE HOUSE, CRE, CCIM, FRICS

O: 415.464.6401

catherineh@svn.com

CalDRE #01327824

LOCATION MAP



CATHERINE HOUSE, CRE, CCIM, FRICS

O: 415.464.6401

catherineh@svn.com

CalDRE #01327824