

*LAND FOR SALE*

***NORTH GRAND PRAIRIE INDUSTRIAL LAND***



**JONATHAN TOOLEY**

806.346.1276

[JONATHAN@HAMILTONCOMMERCIAL.COM](mailto:JONATHAN@HAMILTONCOMMERCIAL.COM)

**NEC OF JANUARY LANE & SH-161 - GRAND PRAIRIE, TEXAS**  
22.5 ACRES - LIGHT INDUSTRIAL - WAREHOUSE/DISTRIBUTION

# Property Summary

## Summary

**LAND:** 22.5 ACRES

**ZONING:** PD-403 for MF, GR, & TH

**UTILITIES:** WATER, SEWER, ELECTRIC

## Overview

- TOTAL BUILDING AREA: 235K SF
- 3 BUILDING DESIGN
- 50+ TRAILER PARKING SPACES
- LOCATED ADJACENT TO I-30/SH-161/SH-360
- CALL OR EMAIL TO INQUIRE MORE INFORMATION



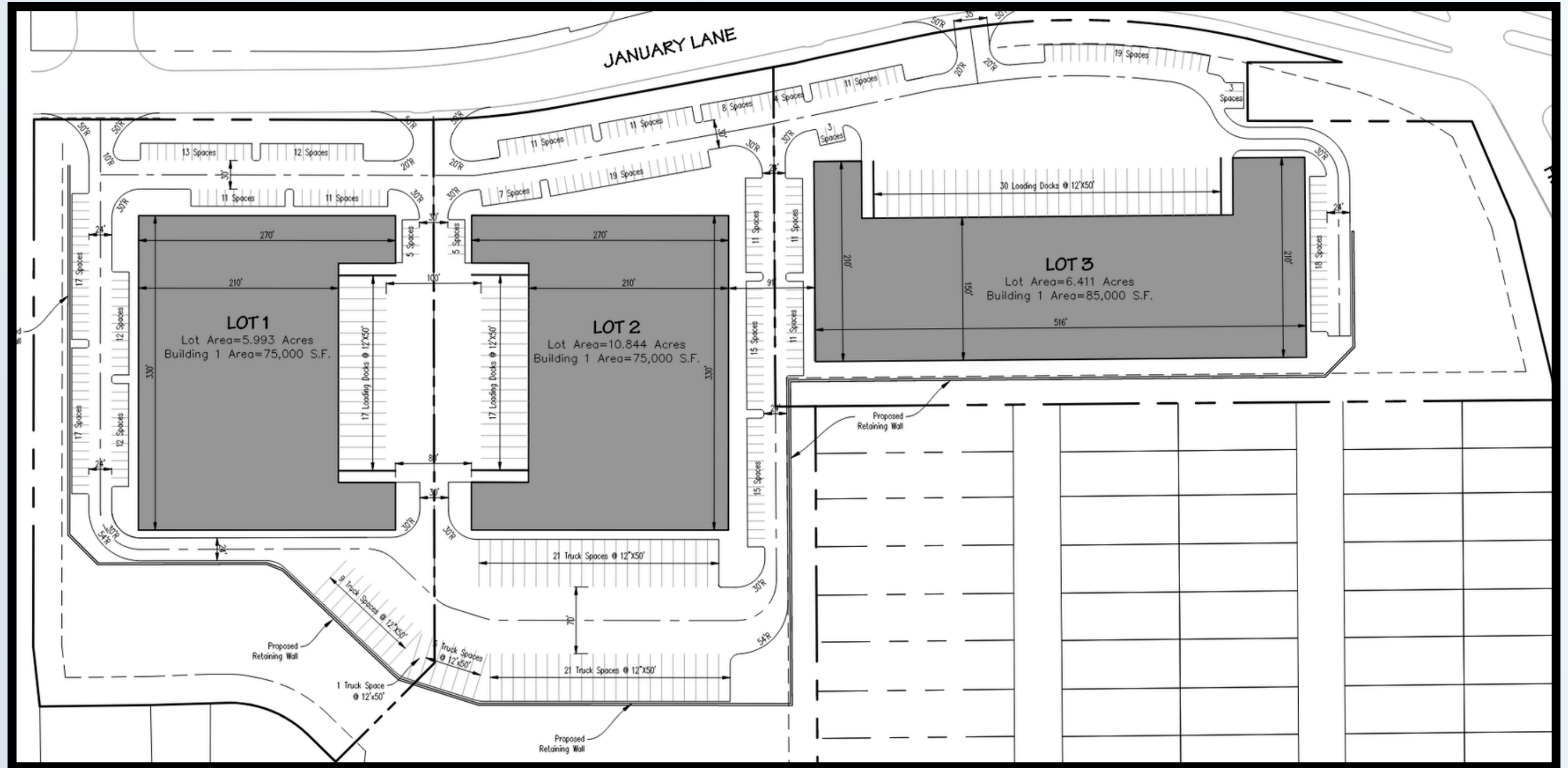
**JONATHAN TOOLEY**

806.346.1276

JONATHAN@HAMILTONCOMMERCIAL.COM

**NEC OF JANUARY LANE & SH-161 - GRAND PRAIRIE, TEXAS**  
22.5 ACRES - LIGHT INDUSTRIAL - WAREHOUSE/DISTRIBUTION

# Concept Plan



**JONATHAN TOOLEY**

806.346.1276

JONATHAN@HAMILTONCOMMERCIAL.COM

**NEC OF JANUARY LANE & SH-161 - GRAND PRAIRIE, TEXAS**  
22.5 ACRES - LIGHT INDUSTRIAL - WAREHOUSE/DISTRIBUTION



**HAMILTON**  
COMMERCIAL

### **FOR MORE INFORMATION:**

THE INFORMATION CONTAINED IN THIS DOCUMENT WAS SUPPLIED BY SOURCES DEEMED RELIABLE BUT THERE ARE NO GUARENTEES OR WARRANTIES DUE TO ANY INACCURACIES. THIS DOCUMENT MAYBE SUBJECT TO ERRORS, OMISSIONS, PRICES CHANGES, OR TAKEN OFF THE MARKET.

### **JONATHAN TOOLEY**

DIRECTOR - LAND DEVELOPMENT

806.346.1276

[JONATHAN@HAMILTONCOMMERCIAL.COM](mailto:JONATHAN@HAMILTONCOMMERCIAL.COM)