

CLASS A OFFICE SPACE FOR LEASE

301 LILAC DRIVE, EDMOND, OK 73034



LOCATION DESCRIPTION

Located in East Edmond; Lilac Drive is on the south side of E. 2nd Street which is located 3/4 of a mile west of I-35.

PROPERTY HIGHLIGHTS

- Ample on-site parking
- Executive office space
- Class A office space
- Ready for Immediate Occupancy
- Locally owned and managed
- Includes normal utilities, janitorial & maintenance. Tenant pays internet/phone

OFFERING SUMMARY

Suite 100:	±1,600 RSF
-------------------	------------

Lease Rate:	\$2,535 / month with 3% annual increases
--------------------	---

Market:	Edmond
----------------	--------

Class:	A
---------------	---

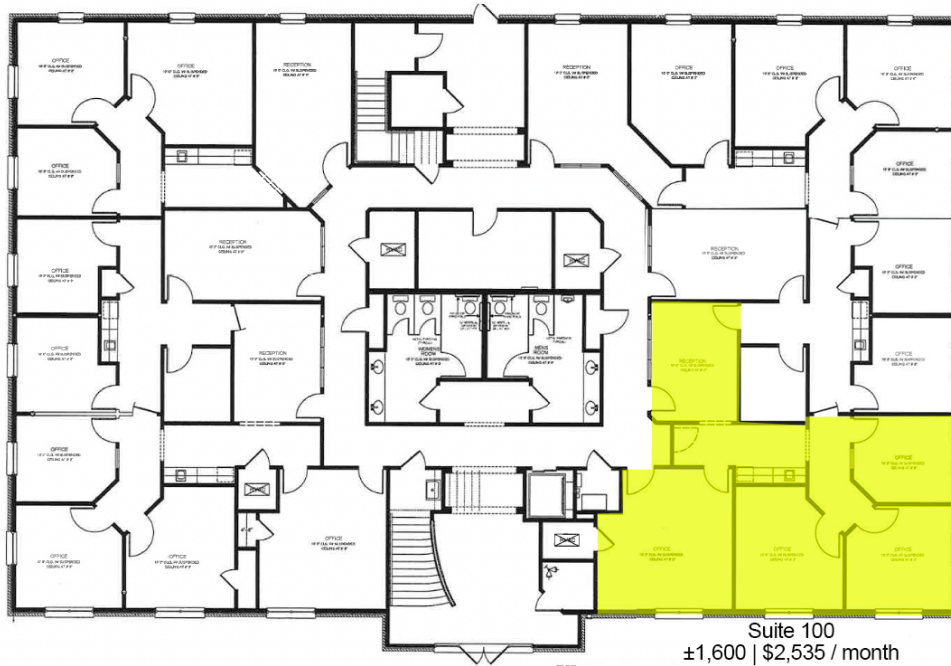
TOM FIELDS

tfields@priceedwards.com

O: 405.239.1205

CLASS A OFFICE SPACE FOR LEASE

301 LILAC DRIVE, EDMOND, OK 73034



Suite 100
±1,600 | \$2,535 / month
301 Lower Level



TOM FIELDS

tfields@priceedwards.com

O: 405.239.1205