

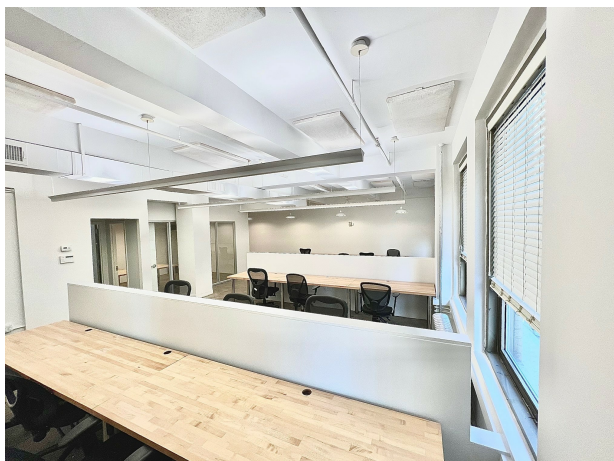
It's Chelsea. Terrific.

150 West 30th Street (between 6th and 7th Avenues)

Suite 406

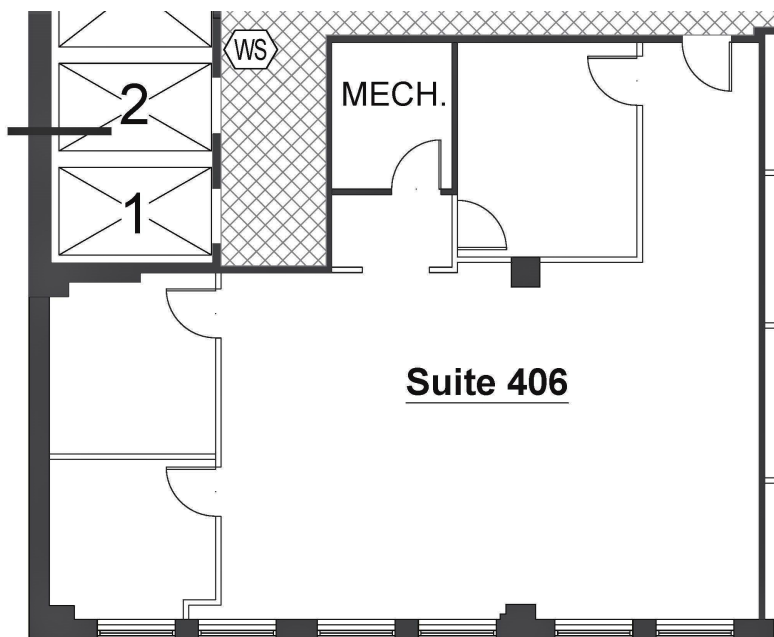
BERNSTEIN

REAL ESTATE



Facts

- 2,200 rentable sq ft
- Bright front facing unit
- Conference room, 2 offices, and wet pantry
- Open area furnished with desks
- Concrete floors, open ceiling



About the Property

Gorgeous lobby and upgraded elevators
24 hour/7day Lobby Attendant
Full Staff
6 elevators (4 passenger, 2 freight)
Great Tenant Roster
Just off Seventh Avenue, steps from Penn Station, close to Herald Square Subways and Path



Terms

- Possession: Immediate
- Rent: Negotiable
- Landlord will modify/upgrade
- Electric submetered
- Tenant controlled air cooled a/c

David Berger



call to show

Phone: 646-454-2906

Email: dberger@bernsteinre.com

All information is furnished from sources deemed reliable, but no representation is made as to the accuracy thereof, and same is submitted subject to errors, omissions, change of price, rental, or other conditions, prior sale, lease or financing and/or withdrawal without notice. This listing does not constitute an employment. All areas and dimensions are approximate.