

COMMERCIAL GARAGE | .72 ACRE LOT-TWO PARCELS
582-584 BUTLER ST.
ETNA PA 15101



KEN SURDICK

OFFICE: 724.449.9900

CELL: 412.916.9164

EMAIL: KENSURDICK@HOWARDHANNA.COM

PRESENTED BY:



Real Estate Services

HAMPTON OFFICE

5048 WILLIAM FLYNN HWY

GIBSONIA, PA 15044

PROPERTY OVERVIEW

- Commercial Garage zoned C-2 Neighborhood Commercial
- 3 garage bays
- Main Building 2520 Square Feet
- Multiple Car Paved Parking
- Located in Heavy traffic pattern with Route 8 north, Butler Street and 28 North/South
- Access to all major transportation arteries : Int 79, PA Turnpike
- Two Parcels totaling .72 Acres
- Automotive Equipment and Pole Buildings negotiable.

OFFERED AT \$ 895,000

CONTACT

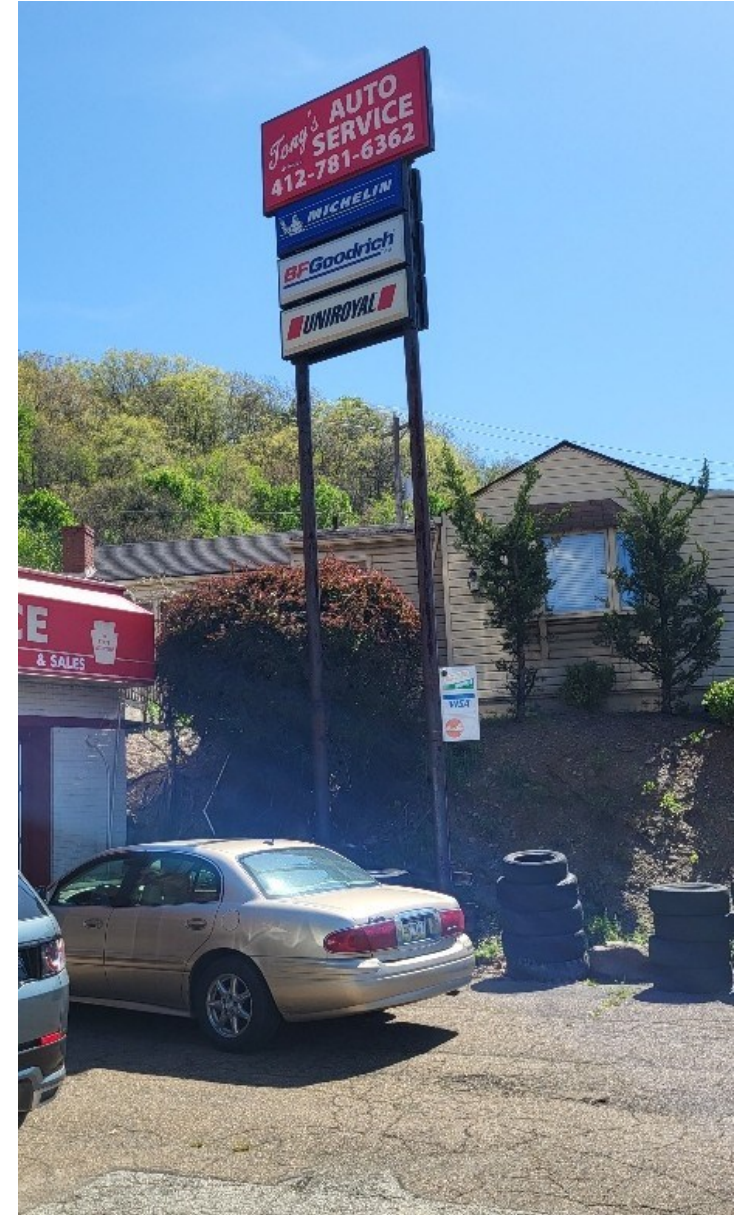
Ken Surdick

kensurdick@howardhanna.com

412.916.9164



PROPERTY OVERVIEW | PHOTOS | EXTERNAL & OFFICE



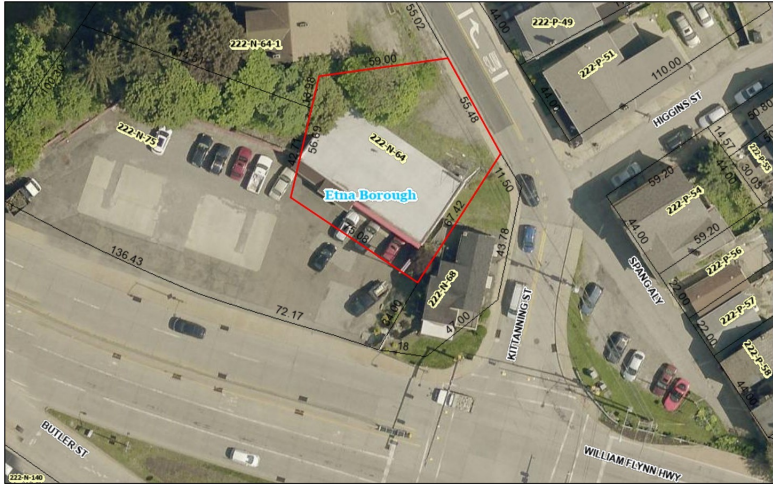
AERIAL OUTLINE

PIN: 0222N00075000000



June 17, 2025
Municipalities Parcels
Streets
1:564
0 0.01 0.01 0.01 mi
0 0.01 0.01 0.02 km
Allegheny County 2012-2010 Imagery
Data displayed on this map is for informational purposes only. It is not survey 2020

PIN: 0222N00064000000



June 17, 2025
Municipalities Parcels
Streets
1:564
0 0.01 0.01 0.01 mi
0 0.01 0.01 0.02 km
Allegheny County 2012-2010 Imagery
Data displayed on this map is for informational purposes only. It is not survey 2020

