

FOR LEASE

118 Dixon St.
Selbyville, DE 19975



THE SPACE

Location	118 Dixon St. Selbyville, DE 19975
County	Sussex

HIGHLIGHTS

- Available for Lease
- Building B: 5,000+/-sf
- Building C: 7,500+/-sf
- Lease Price: \$9.00 psf
- The properties are on 2.14+/-acres of land and are zoned IP-Industrial Park

POPULATION

1.00 MILE	3.00 MILE	5.00 MILE
2,063	4,869	10,580

AVERAGE HOUSEHOLD INCOME

1.00 MILE	3.00 MILE	5.00 MILE
\$107,187	\$120,859	\$125,286

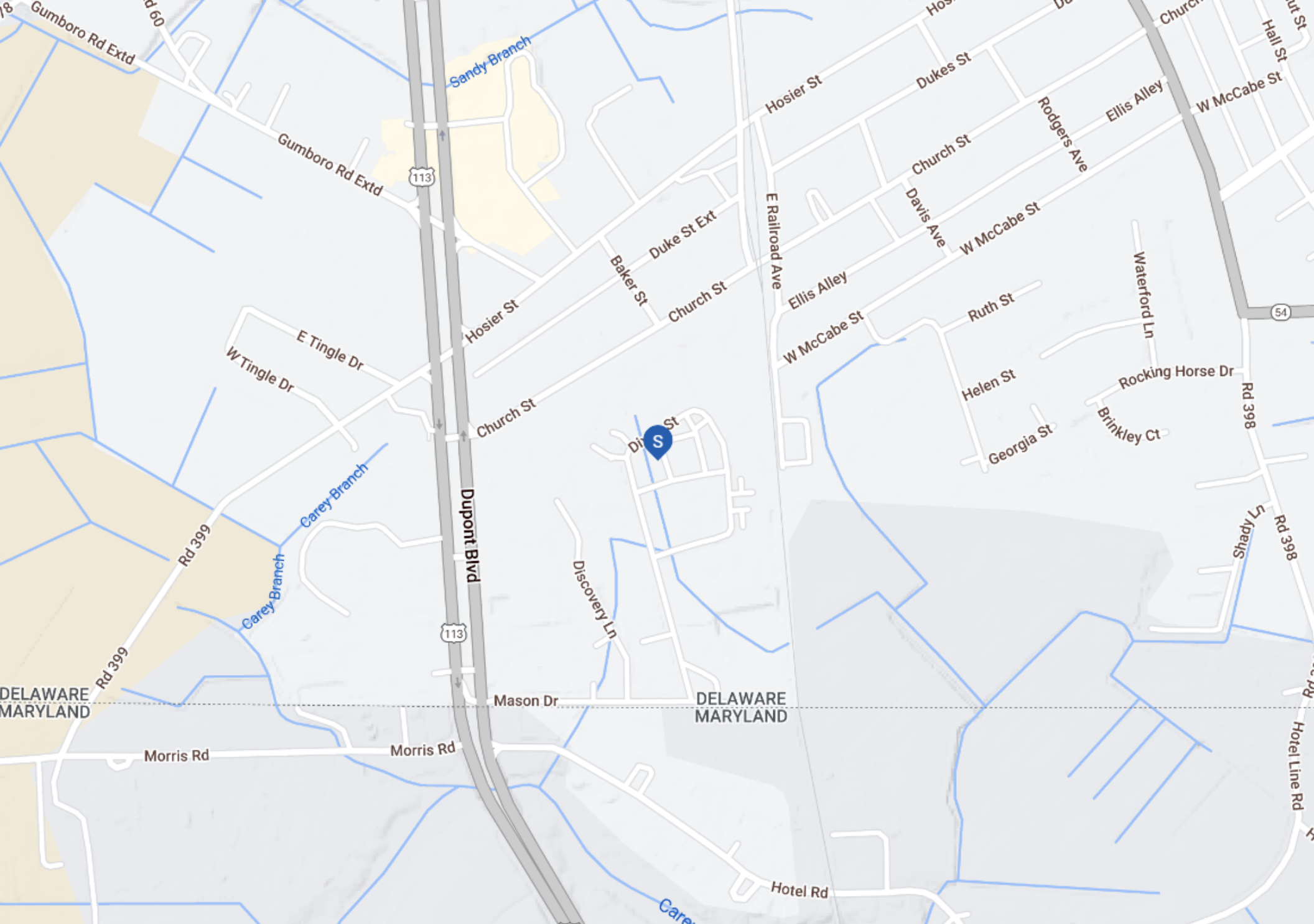
NUMBER OF HOUSEHOLDS

1.00 MILE	3.00 MILE	5.00 MILE
797	1,862	4,260



Charles Rodriguez
Broker
(302) 674-3400 x111
ccrod1@aol.com

R and R Commercial Realty
46 S. State Street, Dover, DE 19901



Charles Rodriguez
Broker
(302) 674-3400 x111
ccrod1@aol.com

R and R Commercial Realty
46 S. State Street, Dover, DE 19901



Charles Rodriguez
Broker
(302) 674-3400 x111
ccrod1@aol.com

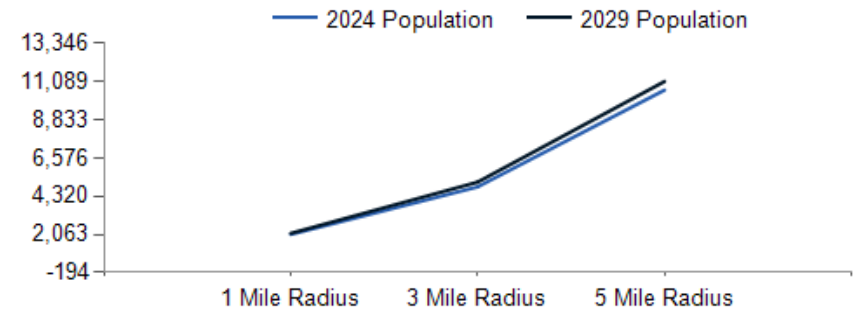
R and R Commercial Realty
46 S. State Street, Dover, DE 19901

Aerial Map |

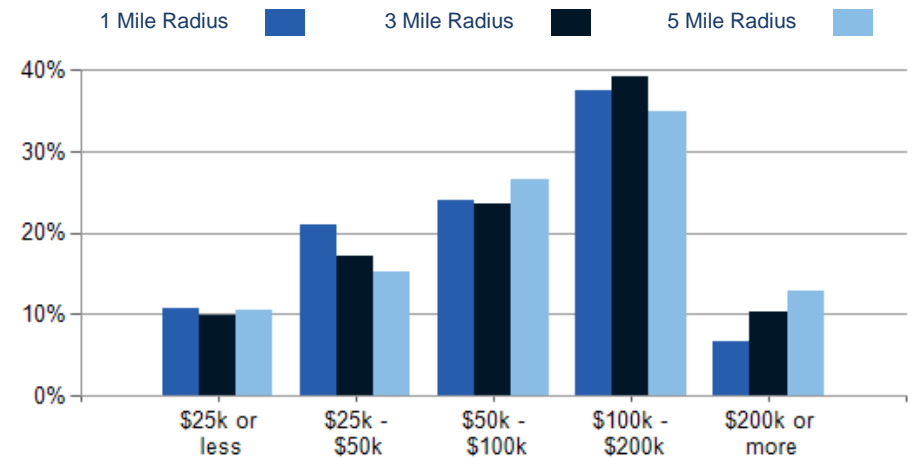
POPULATION	1 MILE	3 MILE	5 MILE
2000 Population	1,728	3,541	7,733
2010 Population	1,934	4,290	9,106
2024 Population	2,063	4,869	10,580
2029 Population	2,126	5,151	11,089
2024-2029: Population: Growth Rate	3.00%	5.65%	4.70%

2024 HOUSEHOLD INCOME	1 MILE	3 MILE	5 MILE
less than \$15,000	44	95	187
\$15,000-\$24,999	42	90	262
\$25,000-\$34,999	62	99	229
\$35,000-\$49,999	106	218	418
\$50,000-\$74,999	109	235	583
\$75,000-\$99,999	82	203	545
\$100,000-\$149,999	140	365	883
\$150,000-\$199,999	159	366	604
\$200,000 or greater	53	191	548
Median HH Income	\$84,329	\$98,605	\$94,646
Average HH Income	\$107,187	\$120,859	\$125,286

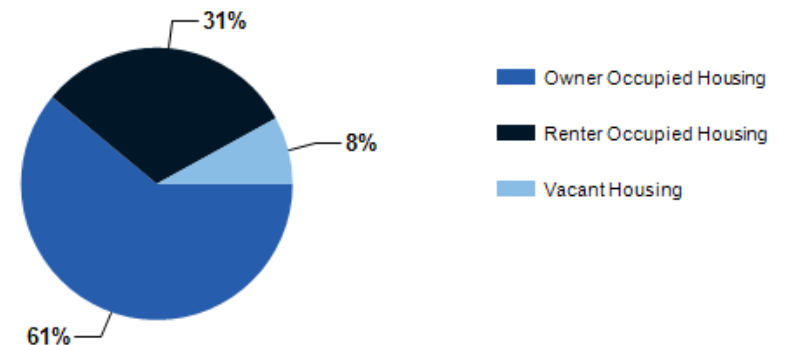
HOUSEHOLDS	1 MILE	3 MILE	5 MILE
2000 Total Housing	689	1,399	3,216
2010 Total Households	721	1,544	3,414
2024 Total Households	797	1,862	4,260
2029 Total Households	843	2,022	4,579
2024 Average Household Size	2.59	2.61	2.48
2024-2029: Households: Growth Rate	5.65%	8.30%	7.25%



2024 Household Income



2024 Own vs. Rent - 1 Mile Radius



Source: esri

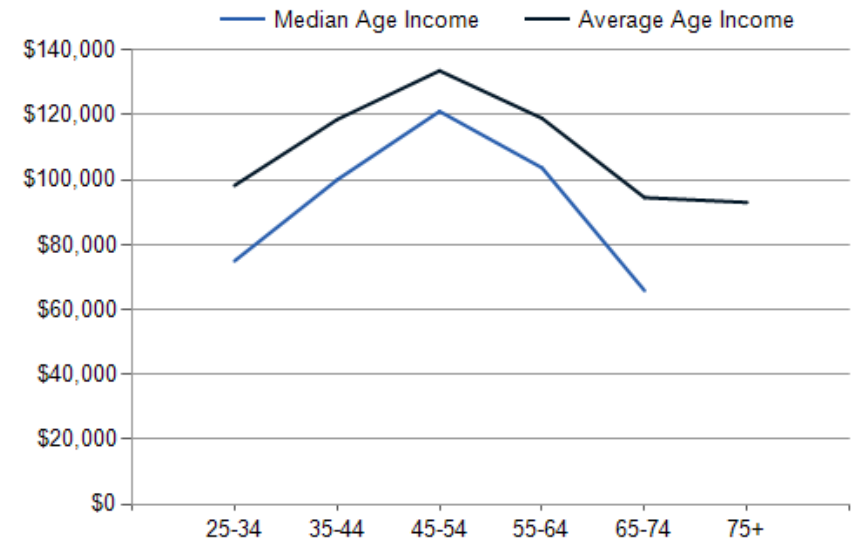
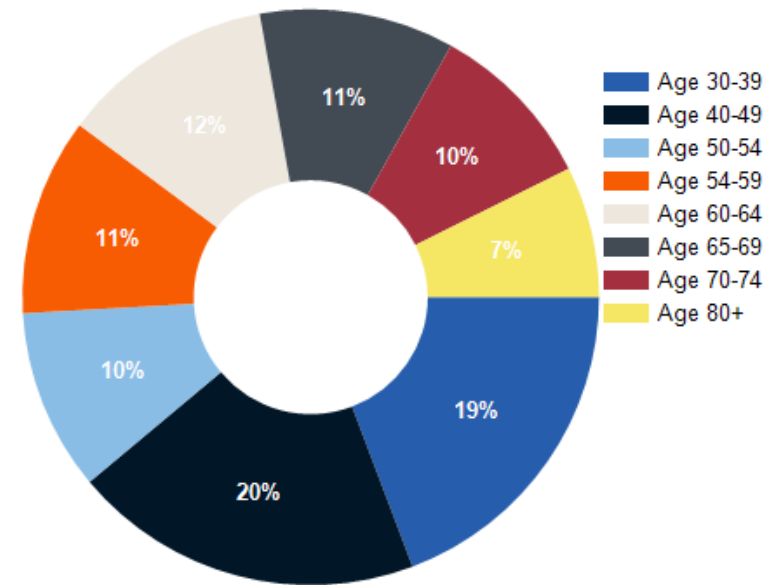


Charles Rodriguez
Broker
(302) 674-3400 x111
ccrod1@aol.com

R and R Commercial Realty
46 S. State Street, Dover, DE 19901

2024 POPULATION BY AGE	1 MILE	3 MILE	5 MILE
2024 Population Age 30-34	107	242	550
2024 Population Age 35-39	131	280	573
2024 Population Age 40-44	133	296	598
2024 Population Age 45-49	110	272	553
2024 Population Age 50-54	126	305	645
2024 Population Age 55-59	137	331	765
2024 Population Age 60-64	148	385	906
2024 Population Age 65-69	135	345	885
2024 Population Age 70-74	118	325	747
2024 Population Age 75-79	91	266	562
2024 Population Age 80-84	45	132	305
2024 Population Age 85+	37	102	289
2024 Population Age 18+	1,603	3,922	8,669
2024 Median Age	42	46	48
2029 Median Age	43	46	49

2024 INCOME BY AGE	1 MILE	3 MILE	5 MILE
Median Household Income 25-34	\$75,000	\$81,475	\$86,209
Average Household Income 25-34	\$98,282	\$105,153	\$116,922
Median Household Income 35-44	\$100,000	\$109,854	\$113,796
Average Household Income 35-44	\$118,593	\$131,772	\$144,825
Median Household Income 45-54	\$121,105	\$126,117	\$118,739
Average Household Income 45-54	\$133,624	\$146,666	\$149,918
Median Household Income 55-64	\$103,715	\$113,329	\$108,518
Average Household Income 55-64	\$118,974	\$136,833	\$141,422
Median Household Income 65-74	\$65,868	\$84,312	\$84,923
Average Household Income 65-74	\$94,535	\$114,454	\$119,676
Average Household Income 75+	\$93,034	\$97,382	\$91,468



Charles Rodriguez
Broker
(302) 674-3400 x111
ccrod1@aol.com

R and R Commercial Realty
46 S. State Street, Dover, DE 19901

Demographics |

6

CONFIDENTIALITY and DISCLAIMER

The information contained in the following offering memorandum is proprietary and strictly confidential. It is intended to be reviewed only by the party receiving it from R and R Commercial Realty and it should not be made available to any other person or entity without the written consent of R and R Commercial Realty.

By taking possession of and reviewing the information contained herein the recipient agrees to hold and treat all such information in the strictest confidence. The recipient further agrees that recipient will not photocopy or duplicate any part of the offering memorandum. If you have no interest in the subject property, please promptly return this offering memorandum to R and R Commercial Realty. This offering memorandum has been prepared to provide summary, unverified financial and physical information to prospective tenants, and to establish only a preliminary level of interest in the subject property.

The information contained herein is not a substitute for a thorough due diligence investigation. R and R Commercial Realty has not made any investigation, and makes no warranty or representation with respect to the income or expenses for the subject property, the future projected financial performance of the property, the size and square footage of the property and improvements, the presence or absence of contaminating substances, PCBs or asbestos, the compliance with local, state and federal regulations, the physical condition of the improvements thereon, or financial condition or business prospects of any tenant, or any tenant's plans or intentions to continue its occupancy of the subject property.

The information contained in this offering memorandum has been obtained from sources we believe reliable; however, R and R Commercial Realty has not verified, and will not verify, any of the information contained herein, nor has R and R Commercial Realty conducted any investigation regarding these matters and makes no warranty or representation whatsoever regarding the accuracy or completeness of the information provided. All potential buyers must take appropriate measures to verify all of the information set forth herein. Prospective buyers shall be responsible for their costs and expenses of investigating the subject property.

Exclusively Marketed by:

Charles Rodriguez

R and R Commercial Realty

Broker

(302) 674-3400 x111

ccrod1@aol.com



randrcommercialrealty.com