

FOR LEASE

±1.67 ACRES (72,863 SF)
IDEAL OUTSIDE STORAGE
OPPORTUNITY

READY FOR IMMEDIATE OCCUPANCY!

**13323 – 13345 IMPERIAL HIGHWAY
& 12507 – 12515 CARMENITA AVENUE
WHITTIER CA**

IMPERIAL HWY

CARMENITA AVENUE

CHRIS EHRlich

Lic. 01450093

+1 562 968 1160

chris.ehrlich@cbre.com

JOHN BIVEN

Lic. 00937552

+1 562 968 1150

john.biven@cbre.com

DALTON DOUTY

Lic. 02037282

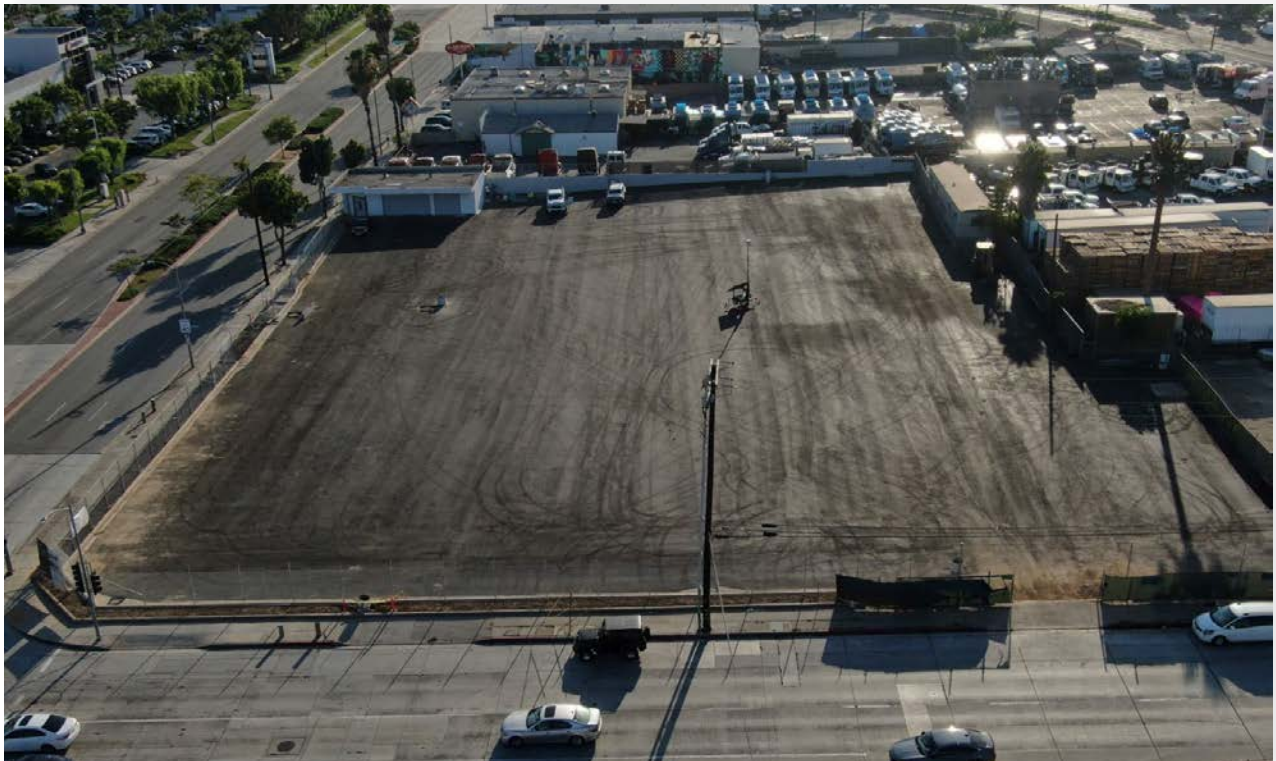
+1 949 809 4052

dalton.douty@cbre.com

CBRE
ZENITH

PROPERTY HIGHLIGHTS

- ±1.67 Acres (72,863 SF)
- Approx. 1,537 SF Warehouse Space
- Divisible to 36,431 SF
- Planned Improvements:
Fenced, Lighted
& Secured Yard
- Major Street Frontage on
Imperial Highway & Carmenita
Road
- Convenient Access to the
5, 605, 105 and 91 Freeways
- Truck/Trailer Uses Allowed
(Tenant to Verify)
- Located in Unincorporated
LA County





CARMENITA AVENUE

IMPERIAL HWY



©2024 CBRE, Inc. All rights reserved. This information has been obtained from sources believed reliable, but has not been verified for accuracy or completeness. You should conduct a careful, independent investigation of the property and verify all information. Any reliance on this information is solely at your own risk. CBRE and the CBRE logo are service marks of CBRE, Inc. All other marks displayed on this document are the property of their respective owners, and the use of such logos does not imply any affiliation with or endorsement of CBRE. Photos herein are the property of their respective owners. Use of these images without the express written consent of the owner is prohibited.

CHRIS EHRLICH
Lic. 01450093
+1 562 968 1160
chris.ehrlich@cbre.com

JOHN BIVEN
Lic. 00937552
+1 562 968 1150
john.biven@cbre.com

DALTON DOUTY
Lic. 02037282
+1 949 809 4052
dalton.douty@cbre.com

CBRE