

BIG BUCK

Distribution Center

For Sale or Lease



Orangeburg City/County Industrial Park

BUILDING SIZE

±280,800 SF

PROPERTY FEATURES

- Class A Spec Distribution Building
- ±280,800 SF | 260' x 1080'
- 32' Clear Height
- 50 x 54 Column Spacing with 60' Speed Bays
- (62) 9' x 10' Dock High Doors with (2) 12' x 14' Drive-ins
- Power: 4000 AMPS off 277/480 Volt, 3 Phase Service
- LED Lighting + ESFR Sprinkler System
- (26) Trailer Spaces provided with (47) future spaces available

LOCATION

- Ideal Logistics Location along I-26 Corridor
- Easy Access to Charleston Port, the Southeast's deepest and fastest growing port
- Orangeburg presents lower cost option vs. Charleston market



HUNTER GARRETT, CCIM, SIOR
864-505-6813 | HGARRETT@NAIEF.COM

JOHN STAUNTON, SIOR
864-905-1112 | JSTAUNTON@NAIEF.COM

JOSH KENYON
704-964-2181 | JKENYON@NAIEF.COM

HAL JOHNSON, SIOR
864-907-6000 | HJOHNSON@NAIREADY.COM

KENNY THOMPSON
864-232-9040 | KTHOMPSON@NAIREADY.COM

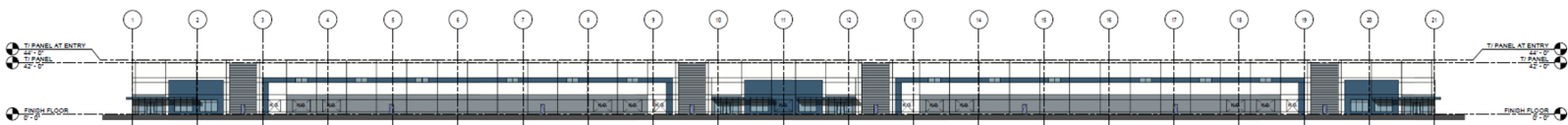
The information contained herein has been given to us by the owner of the property or other sources we deem reliable. We have no reason to doubt its accuracy, but we do not guarantee it. All information should be verified prior to purchase or lease.

NAI Earle Furman

BIG BUCK

Distribution Center

Site plan and elevation



HUNTER GARRETT, CCIM, SIOR
864-505-6813 | HGARRETT@NAIEF.COM

HAL JOHNSON, SIOR
864-907-6000 | HJOHNSON@NAIREADY.COM

JOHN STAUNTON, SIOR
864-905-1112 | JSTAUNTON@NAIEF.COM

KENNY THOMPSON
864-232-9040 | KTHOMPSON@NAIREADY.COM

JOSH KENYON
704-964-2181 | JKENYON@NAIEF.COM

The information contained herein has been given to us by the owner of the property or other sources we deem reliable. We have no reason to doubt its accuracy, but we do not guarantee it. All information should be verified prior to purchase or lease.

NAI Earle Furman