



Allied Commercial
REAL ESTATE



RATE
\$23.00 PSF
full service



GEOGRAPHY
OCP

ORLANDO CENTRAL PARK OFFICE BUILDING
6990 Lake Ellenor Drive Orlando FL 32809

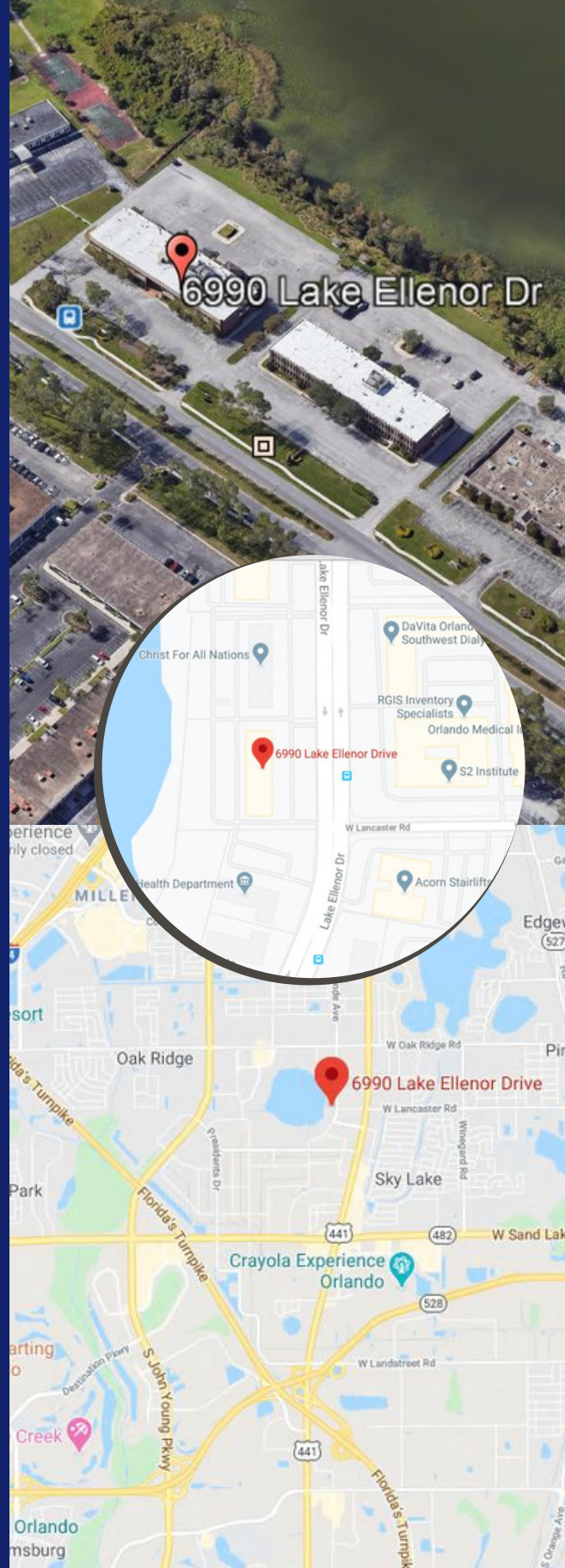


PROPERTY SPECS

Available space: 7500 SF or 15,000 SF
Total Building Size: 34,032 SF
Minimum Contiguous: 7,500 SF, ***no less.***
Maximum Contiguous: 15,000 SF
Rate: \$23.00 PSF full service
\$14,375 per month on 7,500 SF

Amenities: Outstandingly-appointed office space featuring private offices, conference room, work rooms (copy/mail rooms) and cubicle area completely built out with furniture. All offices are fully furnished with modern furniture at no additional charge. **No price concessions for tenants bringing their own furniture.**

Typical Dimensions: Typical office: 12'X14'
Executive office: 24'X12'
Conference room: 28'X15'

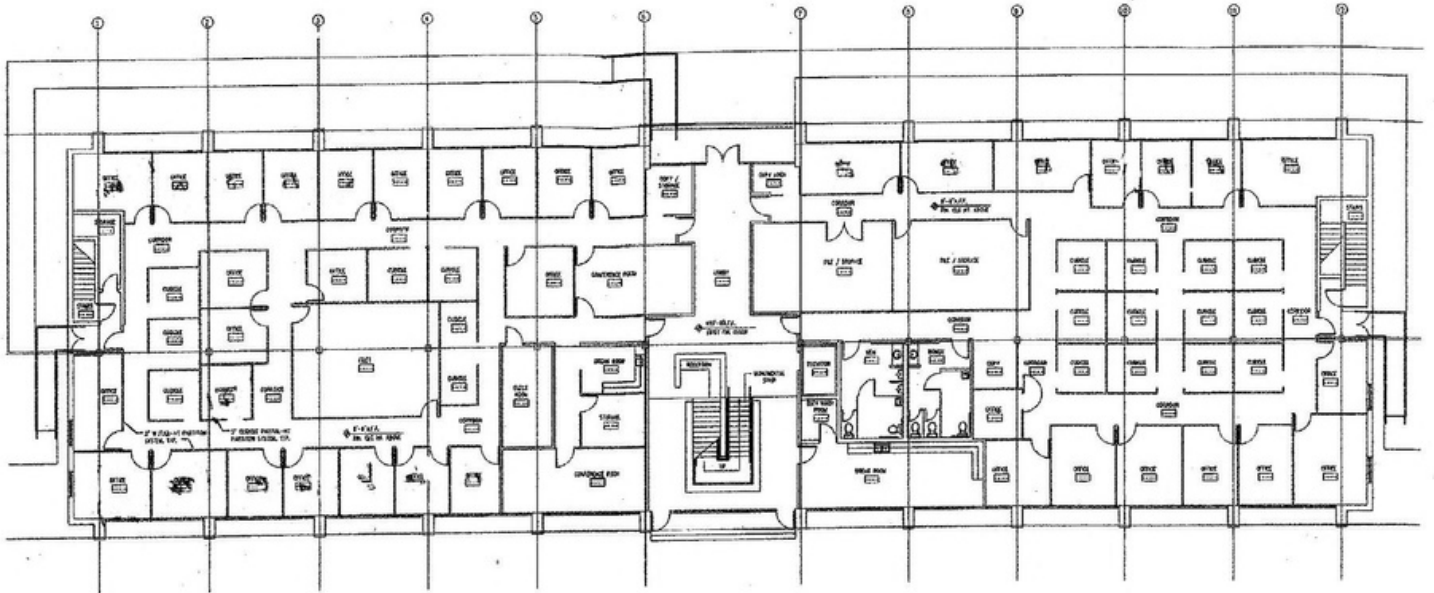


SHER TOLAN, SIOR

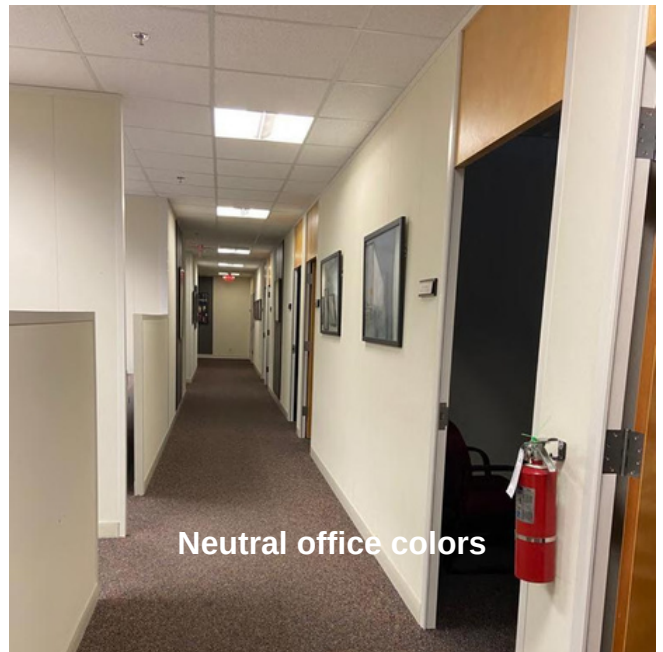
407-810-2291
stolan@allied-comm.com
5401 S Kirkman Rd. Suite 310
Orlando, FL 32819
www.allied-comm.com



6990 - first floor plan



Cubicle Area



Neutral office colors

SHER TOLAN, SIOR

407-810-2291

stolan@allied-comm.com

5401 S Kirkman Rd. Suite 310

Orlando, FL 32819

www.allied-comm.com



Allied Commercial
REAL ESTATE



Typical Conference Room



Community Break Room



Typical Office



Copy/Mail Room

SHER TOLAN, SIOR

407-810-2291

stolan@allied-comm.com

5401 S Kirkman Rd. Suite 310

Orlando, FL 32819

www.allied-comm.com



Allied Commercial
REAL ESTATE



Rear of Building



Rear Parking Lot

This information has been obtained from sources believed reliable, but has not been verified for accuracy or completeness. You should conduct a careful, independent investigation of the property and verify all information. Any reliance on this information is solely at your own risk. Allied Commercial and the Allied Commercial logo are service marks of Allied Commercial Partners, LLC. All other marks displayed on this document are the property of their respective owners. Photos herein are the property of their respective owners. Use of these images without the express written consent of the owner is prohibited.

SHER TOLAN, SIOR

407-810-2291

stolan@allied-comm.com

5401 S Kirkman Rd. Suite 310

Orlando, FL 32819

www.allied-comm.com

