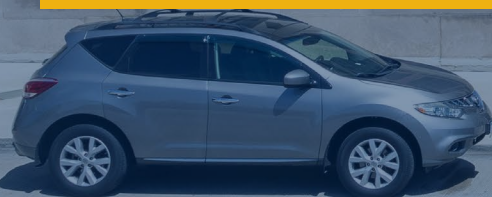
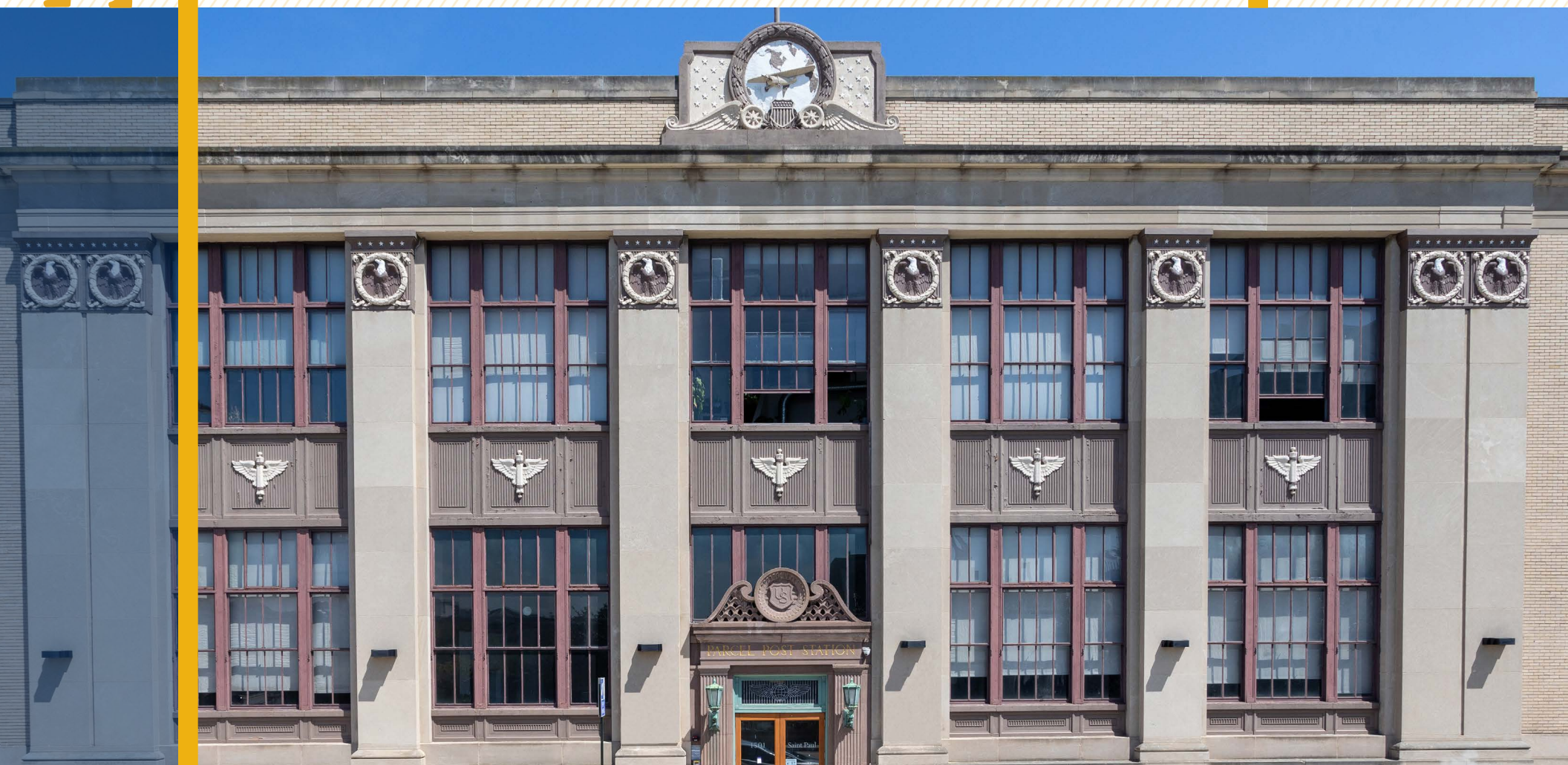




THE RAILWAY EXPRESS BUILDING

1501 ST. PAUL STREET | BALTIMORE, MARYLAND 21202

FOR
LEASE



MACKENZIE

COMMERCIAL REAL ESTATE SERVICES, LLC

PROPERTY OVERVIEW

HIGHLIGHTS:

- Built in 1929 with attractive revival style architecture and beautiful loft offices
- Located adjacent to I-83 and within walking distance to Penn Station. Robust re-development plans in the immediate area.
- 20' ceilings and 10' tall industrial-style windows
- Reserved deck and covered parking on site/some suites have direct entry from parking deck
- Recently renovated lobby with modern finishes, free guest wifi and Amazon lockers for deliveries



Parking deck on both sides of building

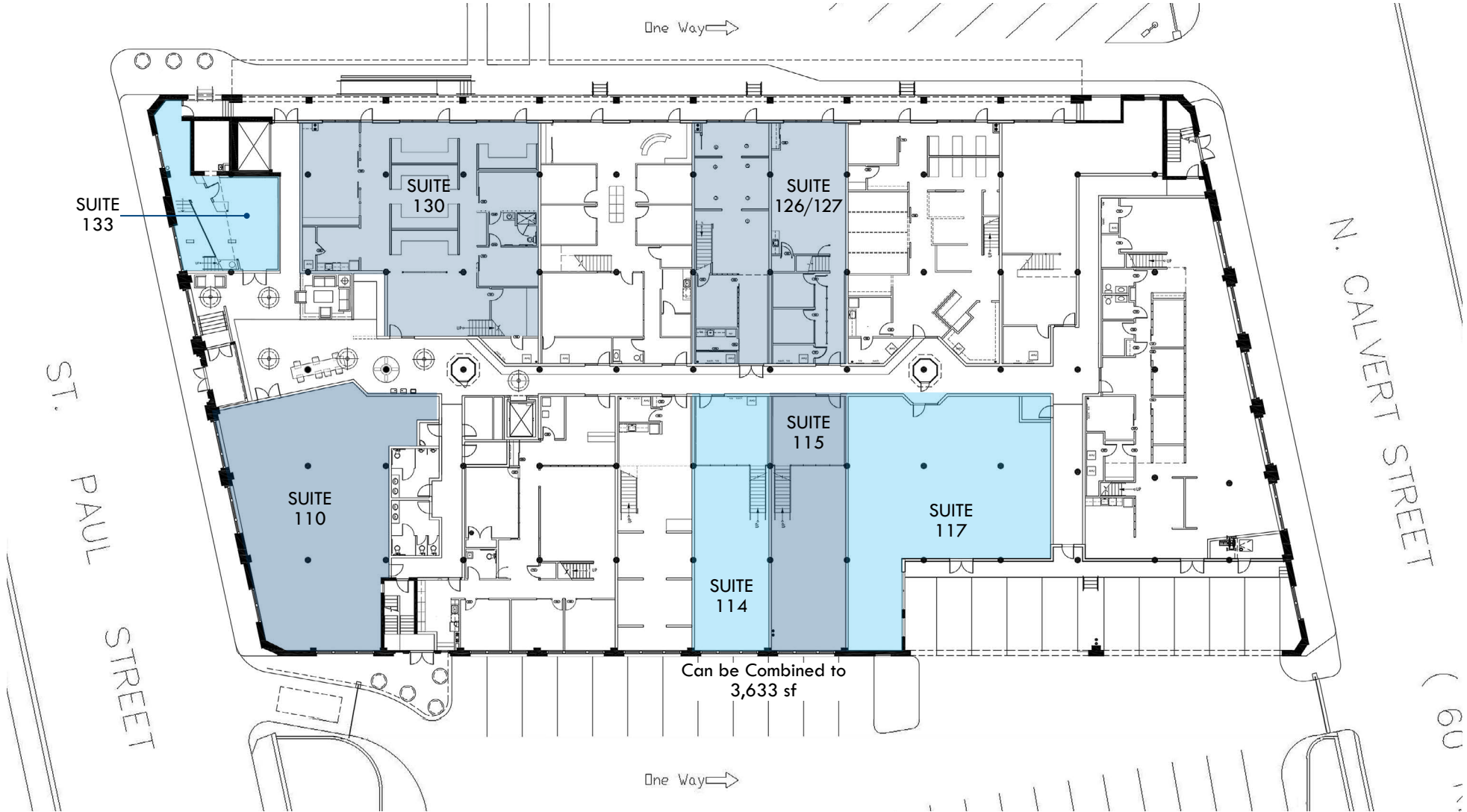
BUILDING SIZE:	74,787 SF ±
AVAILABLE:	SUITE 110: 2,898 SF SUITE 114: 1,774 SF SUITE 115: 1,859 SF (AVAILABLE IN 60 DAYS) SUITE 117: 3,961 SF SUITE 126-127: 3,650 SF SUITE 130: 4,561 SF SUITE 133: 1,344 SF
ZONING:	TOD-4 (TRANSIT ORIENTED DEVELOPMENT)
RENTAL RATE:	\$21.50/SF (FULL SERVICE PLUS UTILITIES)



INTERIOR PHOTOS



FLOOR PLAN



LOCAL BIRDSEYE



PATTERSON PARK

FELLS POINT

INNER HARBOR

GREEN MOUNT CEMETERY

SITE

PENN STATION

THE PRIME RIB

THE OWL BAR

The BREWER'S ART

TURP'S SPORTS BAR & RESTAURANT

university of baltimore

THE LYRIC BALTIMORE

THE WALTERS ART MUSEUM

BALTIMORE SYMPHONY ORCHESTRA

N CALVERT ST

ST PAUL ST

CHARLES STREET

INTERSTATE 83

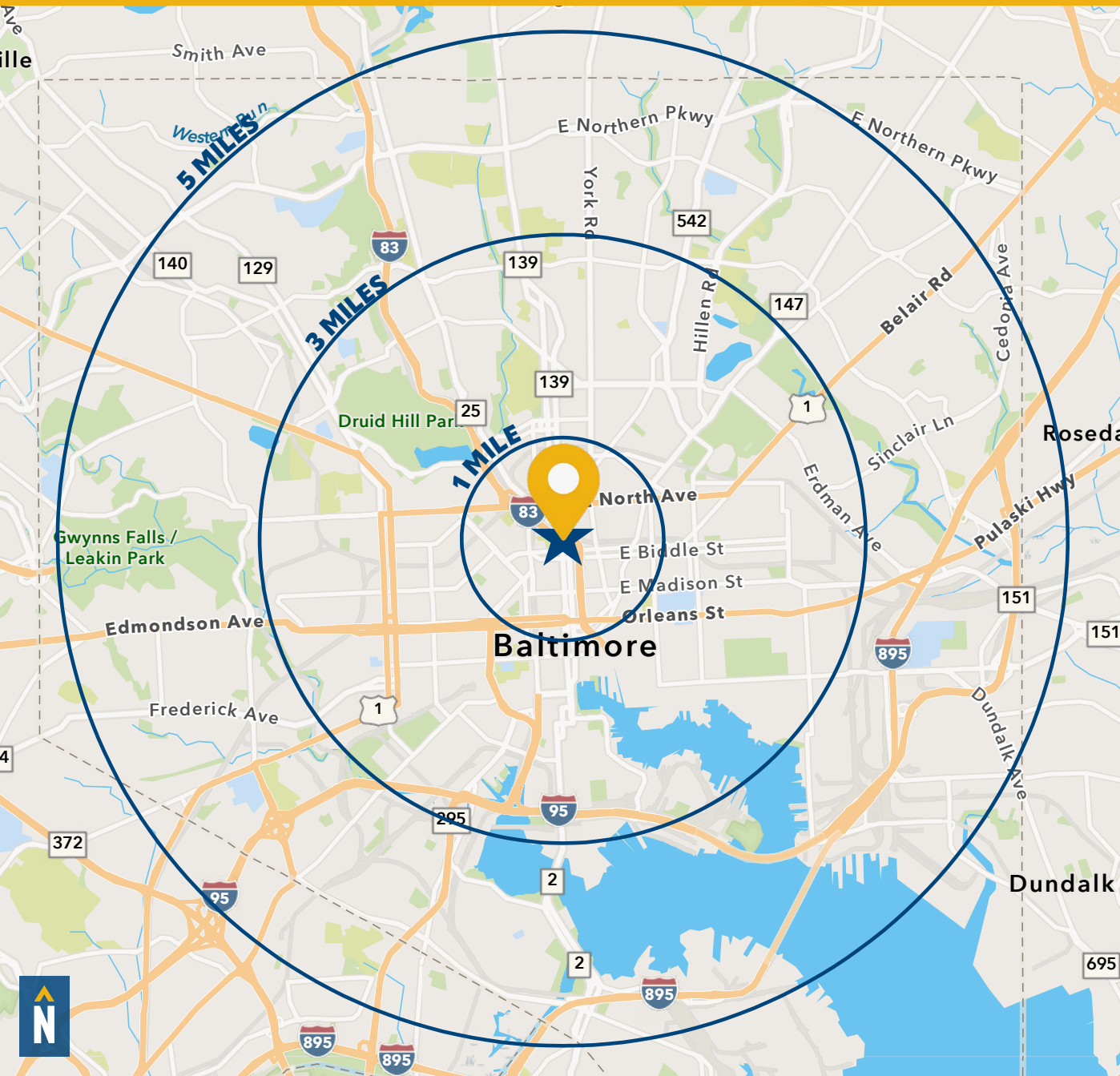
E NORTH AVE

W MT ROYAL AVE



DEMOGRAPHICS

2023



RADIUS:

1 MILE

3 MILES

5 MILES

RESIDENTIAL POPULATION



21,215

141,979

277,869

DAYTIME POPULATION



70,116

405,130

646,746

AVERAGE HOUSEHOLD INCOME



\$71,121

\$93,617

\$90,625

NUMBER OF HOUSEHOLDS



23,131

130,886

233,070

MEDIAN AGE



34.8

35.2

36.8

[FULL DEMOS REPORT](#)

FOR MORE INFO **CONTACT:**



PATRICK SMITH, SIOR

VICE PRESIDENT

410.494.4866

PSMITH@mackenziecommercial.com



CHRIS BOLAND

VICE PRESIDENT

410.494.6644

CBOLAND@mackenziecommercial.com



VISIT **PROPERTY PAGE** FOR MORE INFORMATION.



MACKENZIE

COMMERCIAL REAL ESTATE SERVICES, LLC

410-821-8585

2328 W. Joppa Road, Suite 200

Lutherville, MD 21093

OFFICES IN:

ANNAPOLIS

BALTIMORE

BEL AIR

COLUMBIA

LUTHERVILLE

www.MACKENZIECOMMERCIAL.com

No warranty or representation, expressed or implied, is made as to the accuracy of the information contained herein, and same is submitted subject to errors, omissions, change of price, rental or other conditions, withdrawal without notice, and to any specific listing conditions imposed by our principals.