

8+ Acres With Rail Access



Lease Rate

\$18,000.00
ACRE/MONTH

OFFERING SUMMARY

Available SF: 8.1 Acres

Zoning: M-2 (General Industrial District)

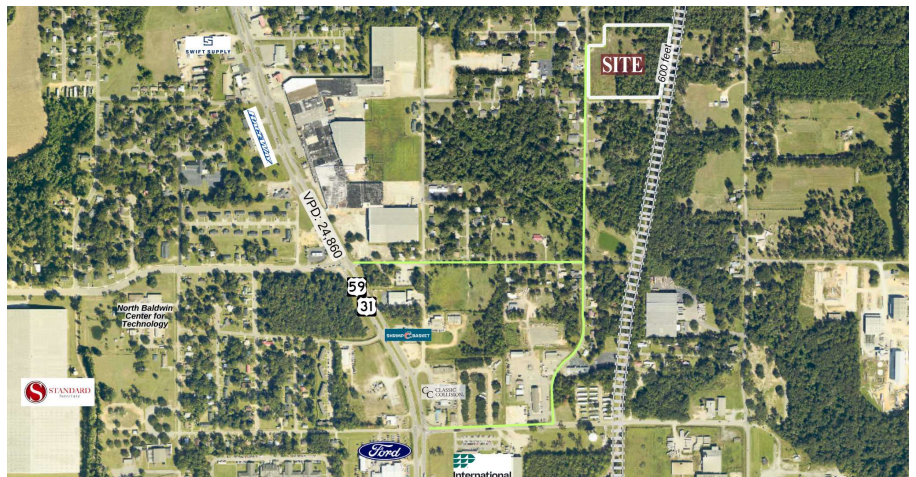
Parcel Number: 05-23-05-16-4-000-003.004

Parcel PIN: 377260

PROPERTY OVERVIEW

+/-8.1 acres for lease near central Bay Minette, with 600' of direct rail access. The rail spur that abuts the property ties into the CSX Transportation railroad, giving direct access to Florida, Mississippi, and the Port of Mobile.

Zoned M-2 (General Industrial District)



Crawford Stitt

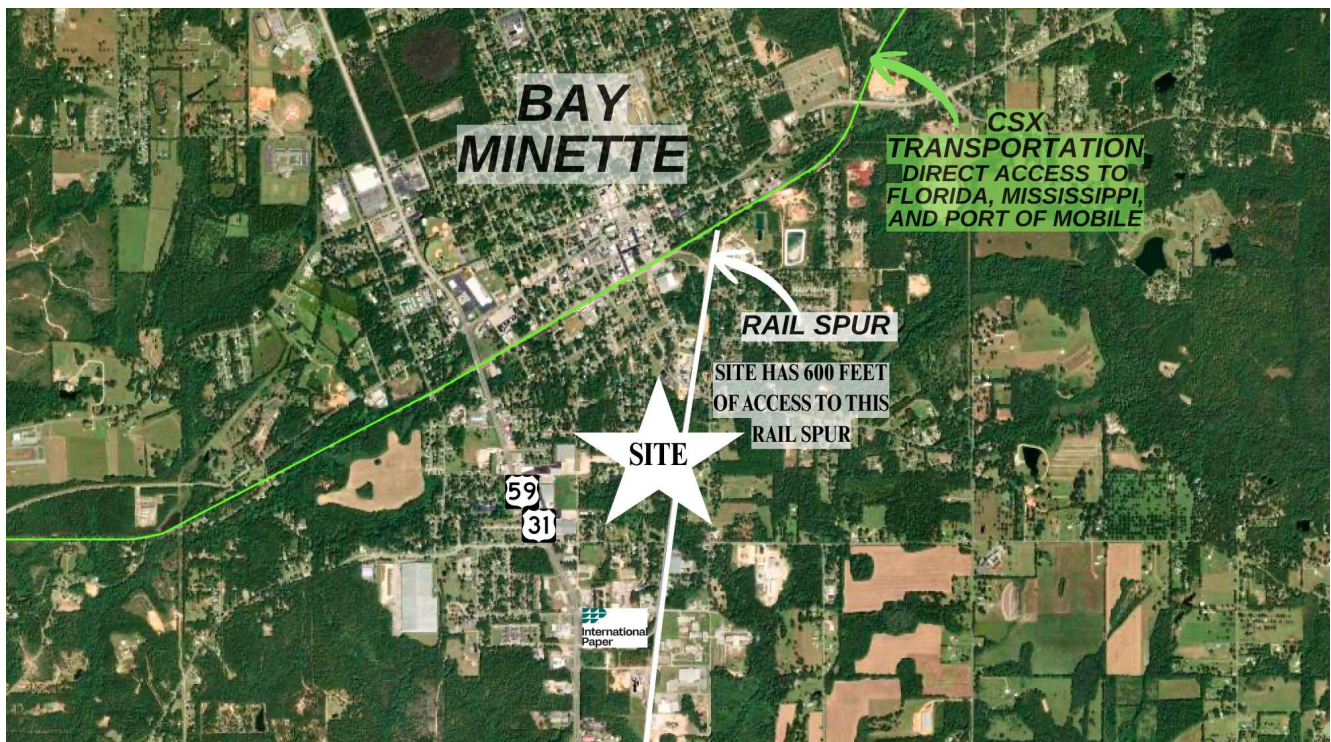
251.295.1328

crawford@white-spunnerrealty.com

White-Spunner has obtained the information from sources it believes to be reliable and believes the information to be correct. No representation or warranties, expressed or implied are made as to the accuracy or reliability of this information. The recipient bears responsibility for verification of the information contained herein and bears all risk for any accuracy.



8+ Acres With Rail Access



Crawford Stitt

251.295.1328

crawford@white-spunnerrealty.com

White-Spunner has obtained the information from sources it believes to be reliable and believes the information to be correct. No representation or warranties, expressed or implied are made as to the accuracy or reliability of this information. The recipient bears responsibility for verification of the information contained herein and bears all risk for any accuracy.



8+ Acres With Rail Access



Crawford Stitt

251.295.1328

crawford@white-spunnerrealty.com

White-Spunner has obtained the information from sources it believes to be reliable and believes the information to be correct. No representation or warranties, expressed or implied are made as to the accuracy or reliability of this information. The recipient bears responsibility for verification of the information contained herein and bears all risk for any accuracy.





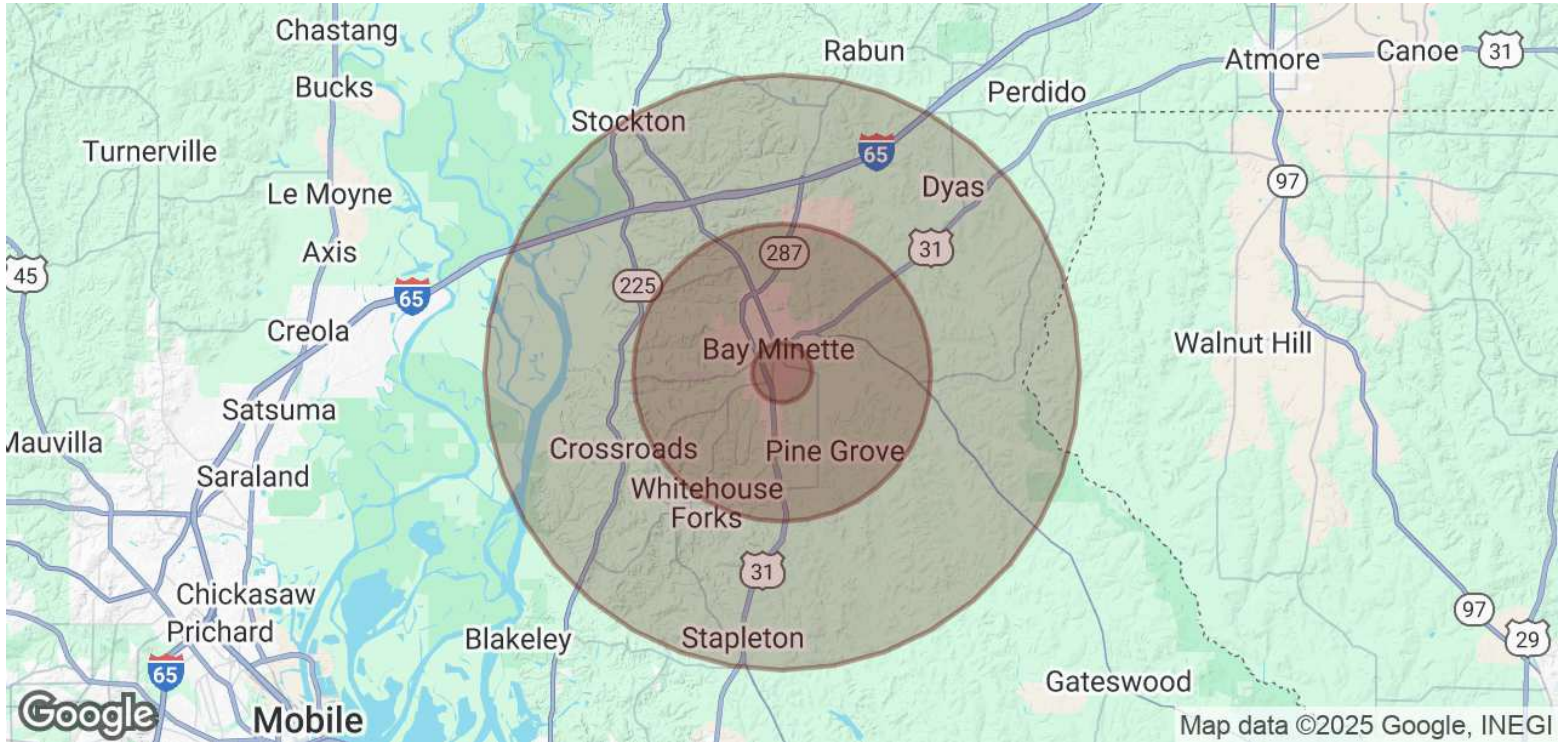
Crawford Stitt

251.295.1328

crawford@white-spunnerrealty.com

White-Spunner has obtained the information from sources it believes to be reliable and believes the information to be correct. No representation or warranties, expressed or implied are made as to the accuracy or reliability of this information. The recipient bears responsibility for verification of the information contained herein and bears all risk for any accuracy.





POPULATION	1 MILE	5 MILES	10 MILES
Total Population	3,090	13,840	20,937
Average Age	38	41	42
Average Age (Male)	38	40	41
Average Age (Female)	39	42	42

HOUSEHOLDS & INCOME	1 MILE	5 MILES	10 MILES
Total Households	1,122	5,302	7,992
# of Persons per HH	2.8	2.6	2.6
Average HH Income	\$48,792	\$69,644	\$80,624
Average House Value	\$162,151	\$207,881	\$237,987

Demographics data derived from AlphaMap

Crawford Stitt

251.295.1328

crawford@white-spunnerrealty.com

White-Spunner has obtained the information from sources it believes to be reliable and believes the information to be correct. No representation or warranties, expressed or implied are made as to the accuracy or reliability of this information. The recipient bears responsibility for verification of the information contained herein and bears all risk for any accuracy.

