

DEVELOPMENT OPPORTUNITY

3269 HIGHWAY 13, RIFLE, CO 81650



COLDWELL BANKER
COMMERCIAL
PRIME
PROPERTIES



For Sale: \$15,000,000

PROPERTY FACTS

Acres: 360

Zoning: 147(+/-) acres annexed into the City of Rifle for Low to Medium Density Residential Development.

Location: Highway 13 frontage
Primary access opposite CR 325

PROPERTY HIGHLIGHTS

Seize the chance to develop **360 acres** of prime land in one of Western Colorado's most promising **growth corridors**. Located at 3269 Highway 13 — at the **gateway of Rifle, CO** — this expansive parcel sits at the intersection of **Interstate 70 and State Highway 13**, offering exceptional visibility and accessibility. With **Glenwood Springs 25 miles east** and **Grand Junction 60 miles west**, this 360-acre opportunity places developers at the heart of the **Western Slope's next chapter** of growth. Land of this scale, in a market this well-positioned, rarely comes available.

MIKE FOSTER

CCIM | (970) 244-6623
Mfooster@cbcwest.com

CBCWEST.COM | CBCWORLDWIDE.COM

2026 CBC West. All Rights reserved. Price, terms, and availability subject to change without notice.

DEVELOPMENT OPPORTUNITY

3269 HIGHWAY 13, RIFLE, CO 81650



COLDWELL BANKER
COMMERCIAL
PRIME
PROPERTIES



RIFLE, COLORADO HIGHLIGHTS

Rifle is a rapidly growing community with a **young median age of 32**, a rising population, and strong housing demand, making this an ideal canvas for residential, commercial, or mixed-use development. Rifle, Colorado is an ideal location for land development. Positioned directly on **Interstate 70**, strong **housing demand**, and home prices **well below nearby resort towns**. Garfield County has doubled in population since 1985 and is projected to double again by 2040, signaling **long-term growth** with room to run. The community offers a rare combination of **affordability, outdoor lifestyle, and connectivity** — sitting just 25 miles from **Glenwood Springs** and within a 90-minute drive of **Aspen** — making it attractive to a wide range of buyers and renters. With Colorado's economy outpacing national growth and the **Western Slope emerging** as one of the state's strongest **revenue-performing regions**, Rifle represents a well-timed opportunity in a market primed for the **next wave of development**.

MIKE FOSTER

CCIM | (970) 244-6623
Mfooster@cbcwest.com

CBCWEST.COM | CBCWORLDWIDE.COM

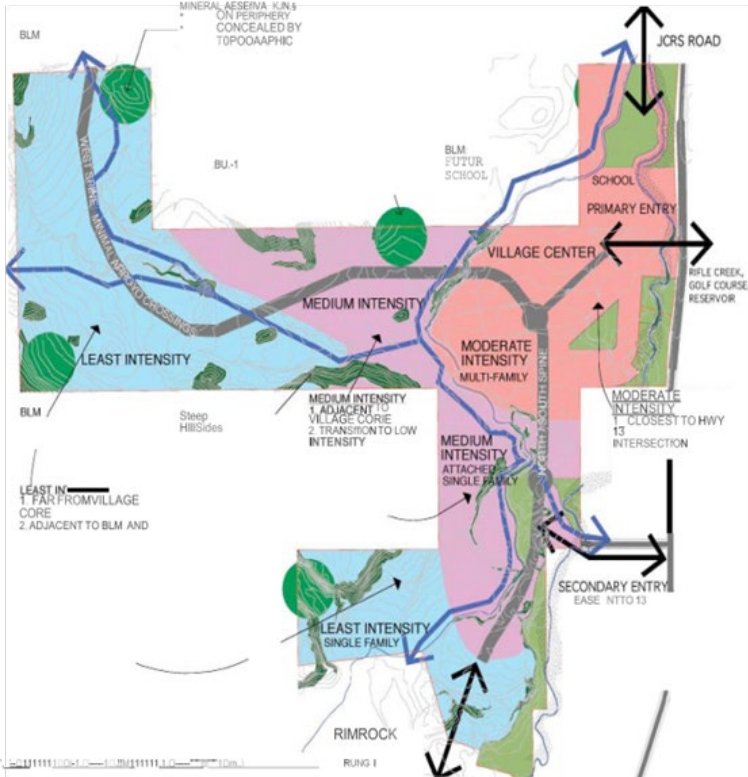
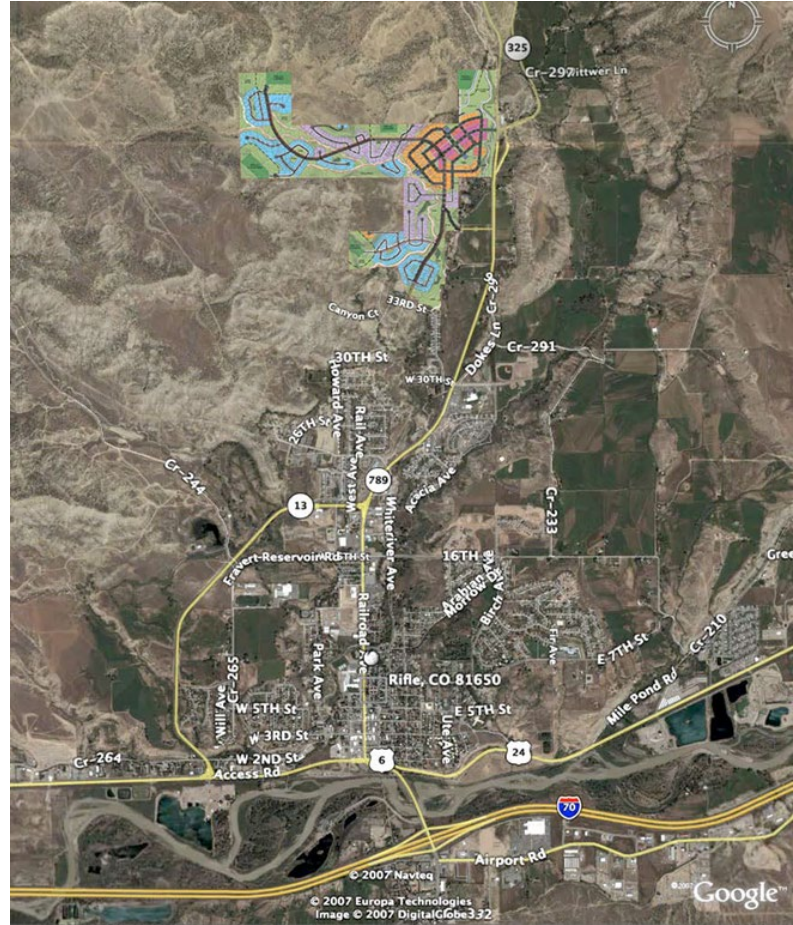
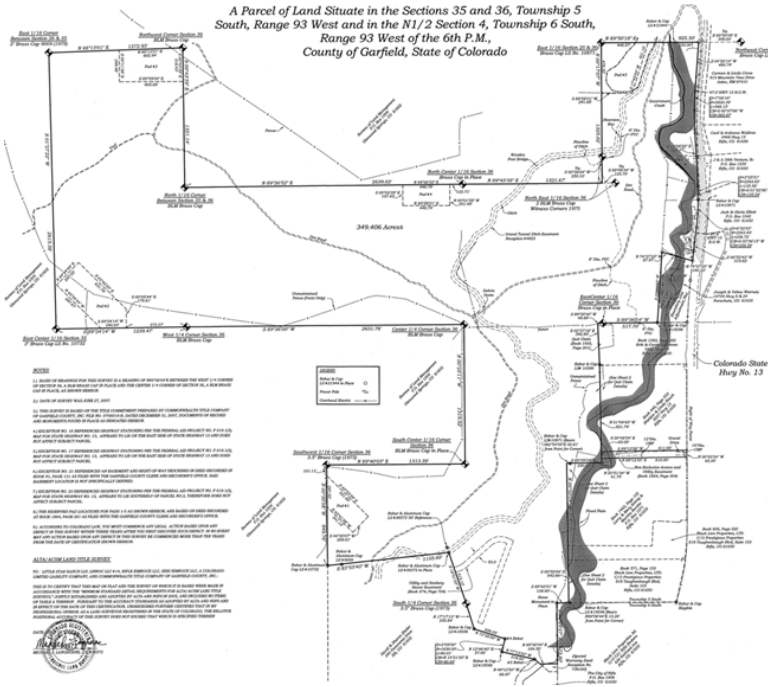
2026 CBC West. All Rights reserved. Price, terms, and availability subject to change without notice.

DEVELOPMENT OPPORTUNITY

3269 HIGHWAY 13, RIFLE, CO 81650



**COLDWELL BANKER
COMMERCIAL**
PRIME
PROPERTIES



MIKE FOSTER
CCIM | (970) 244-6623
Mfooster@cbcwest.com

CBCWEST.COM | CBCWORLDWIDE.COM

2026 CBC West. All Rights reserved. Price, terms, and availability subject to change without notice.