



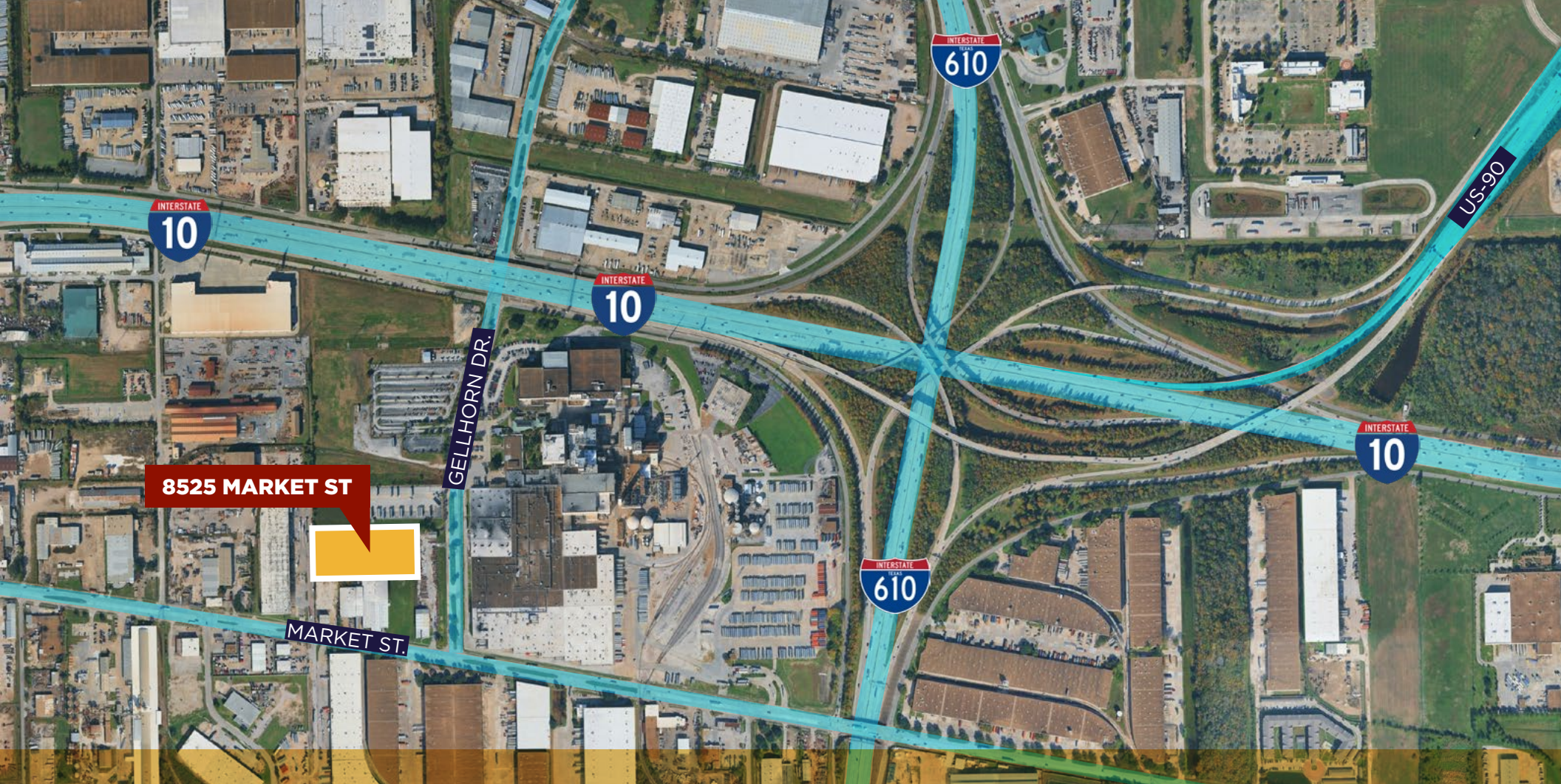
FOR SALE OR LEASE

8525 MARKET STREET

HOUSTON, TX

± 84,245 SF AVAILABLE

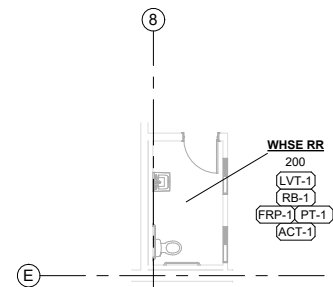
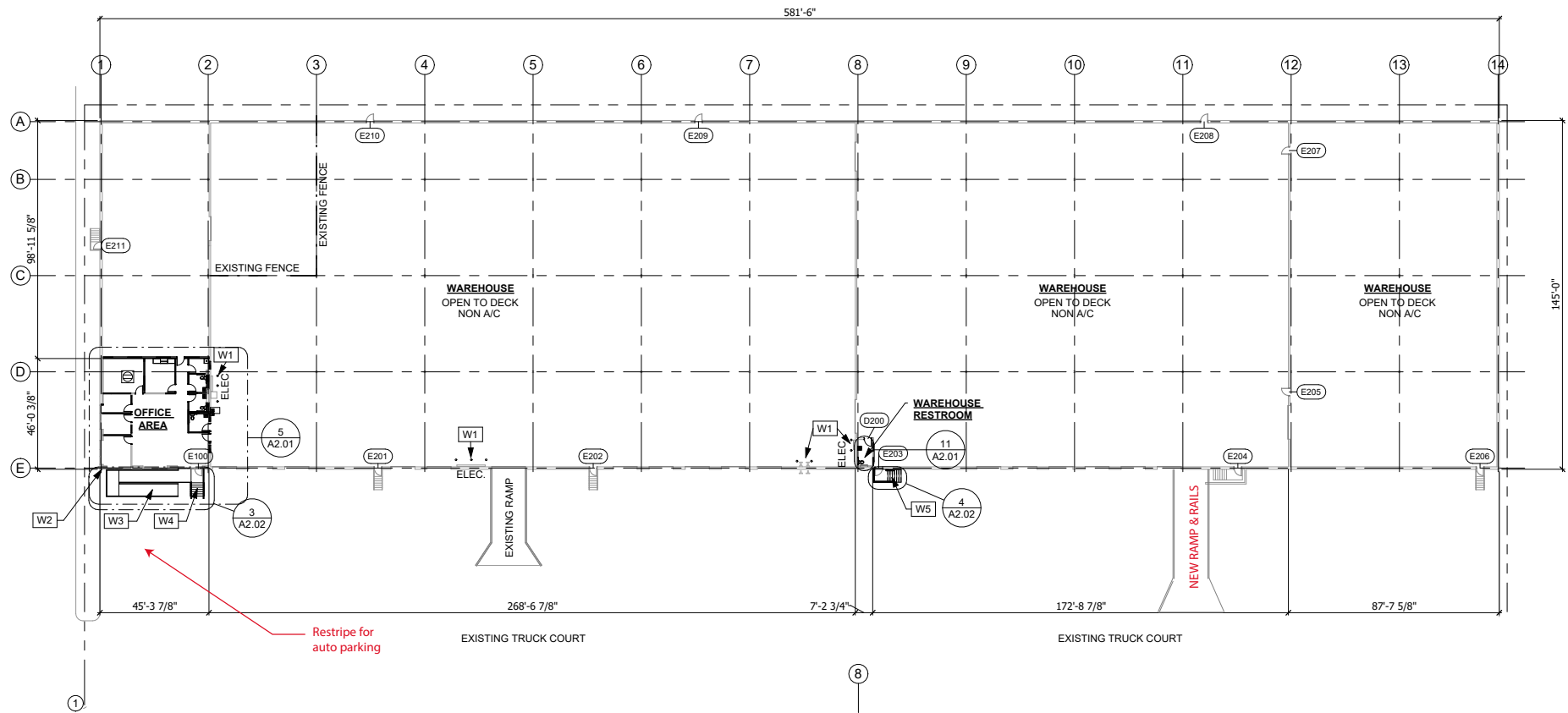




PROPERTY HIGHLIGHTS

- **±84,245 SF FREESTANDING BUILDING**
- **3.4 ACRE SITE**
- **±3,500 SF OF EXISTING OFFICE SPACE**
- **RENOVATED IN Q1 2025**
- **24' CLEAR HEIGHT**
- **145' BUILDING DEPTH**
- **45' X 40' COLUMN SPACING**
- **16 DOCK DOORS**
- **2 DRIVE-IN RAMPS**
- **98' TRUCK COURT**
- **ROOM FOR OUTSIDE STORAGE**
- **EASY ACCESS TO I-610, I-10, AND HWY 225**

SITE PLAN

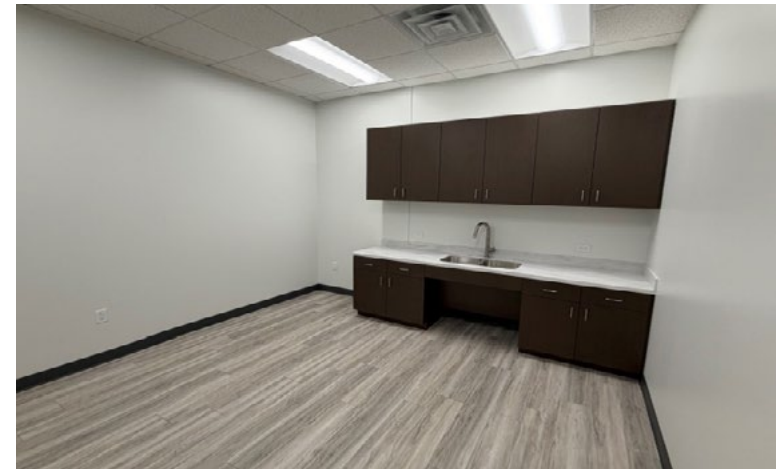
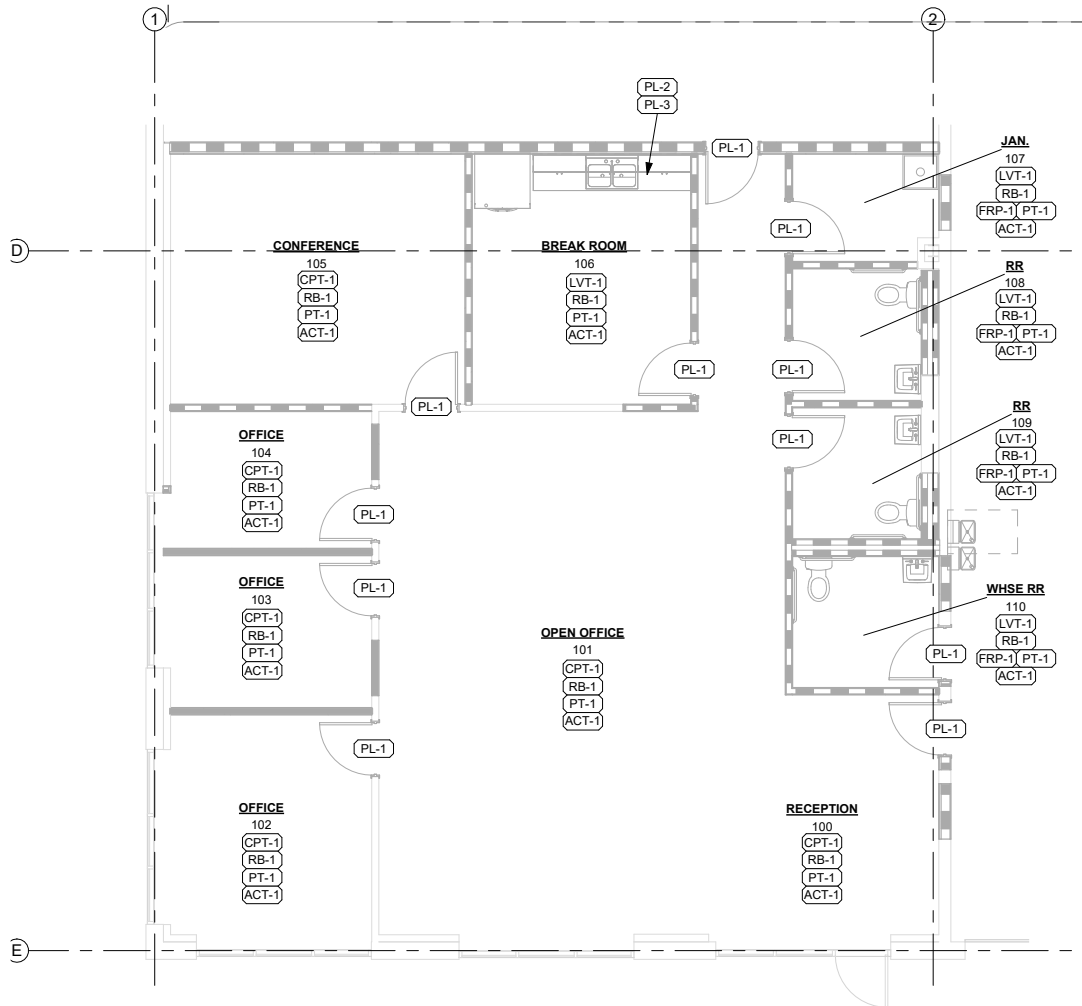


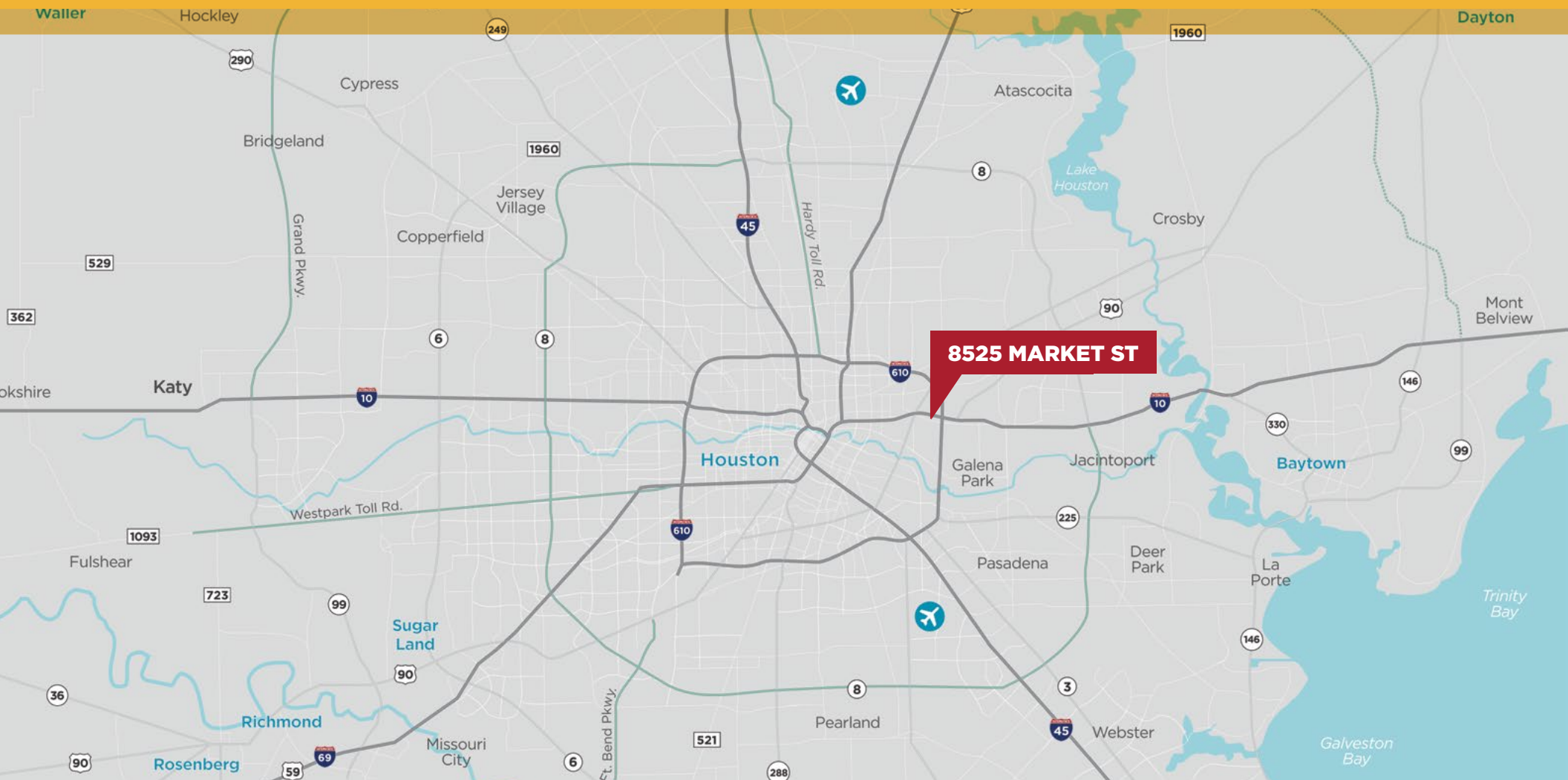
WHSE R/R FINISH PLAN

WAREHOUSE



OFFICE PLAN





CONTACT

JOHN KRUSE

Managing Director

+1 713 304 4919

john.kruse@cushwake.com

CARTER HOLMES

Senior Director

+1 713 417 5447

carter.holmes@cushwake.com

1330 Post Oak Boulevard

Suite 2600

Houston, TX 77056

cushmanwakefield.com



**CUSHMAN &
WAKEFIELD**

©2025 Cushman & Wakefield. All rights reserved. The information contained in this communication is strictly confidential. This information has been obtained from sources believed to be reliable but has not been verified. NO WARRANTY OR REPRESENTATION, EXPRESS OR IMPLIED, IS MADE AS TO THE CONDITION OF THE PROPERTY (OR PROPERTIES) REFERENCED HEREIN OR AS TO THE ACCURACY OR COMPLETENESS OF THE INFORMATION CONTAINED HEREIN, AND SAME IS SUBMITTED SUBJECT TO ERRORS, OMISSIONS, CHANGE OF PRICE, RENTAL OR OTHER CONDITIONS, WITHDRAWAL WITHOUT NOTICE, AND TO ANY SPECIAL LISTING CONDITIONS IMPOSED BY THE PROPERTY OWNER(S). ANY PROJECTIONS, OPINIONS OR ESTIMATES ARE SUBJECT TO UNCERTAINTY AND DO NOT SIGNIFY CURRENT OR FUTURE PROPERTY PERFORMANCE.