

For Lease

640 Cataraqui Woods Dr,
Unit 201, Kingston, ON

Peter Kostogiannis

Broker of Record/President
+1 613 542-2724 x 24

peter.kostogiannis@rockwellcre.com

Sidney Kostogiannis

Salesperson
+1 613 542-2724 x 34

sidney.kostogiannis@rockwellcre.com

 78 Brock St. Kingston,
ON K7L 1R9
www.rockwellcre.com

Rockwell Commercial Real Estate, Brokerage

©2024 Rockwell Commercial Real Estate Brokerage Corp. Independently owned and operated. Also operating as Rockwell Commercial Real Estate, Brokerage. All rights are reserved. No representation or warranty, express or implied, is made as to the accuracy or completeness of the information contained herein, and same is submitted subject to errors, omissions, change of price, rental or other conditions, withdrawal without notice, and/or to any special listing conditions imposed by the property owner(s). No representation or warranty is made with respect to the condition any real property or properties.

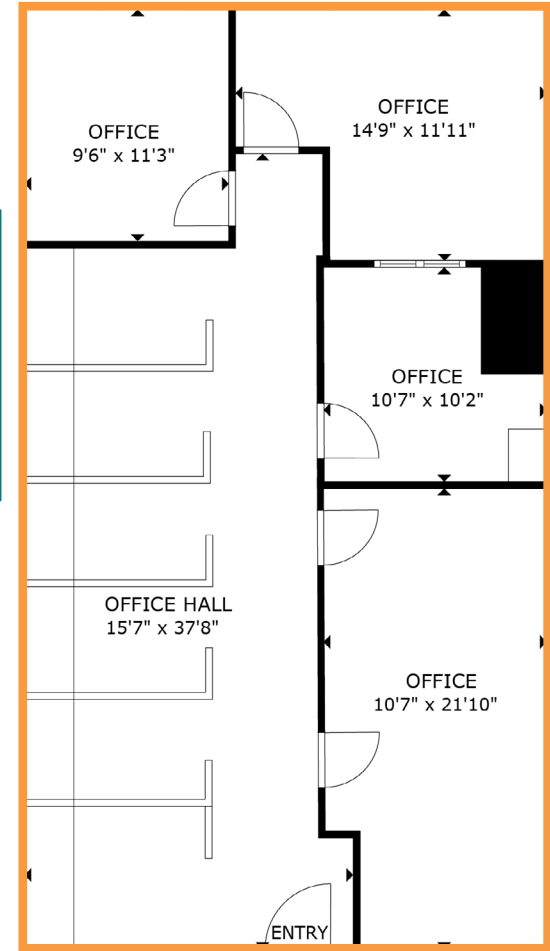
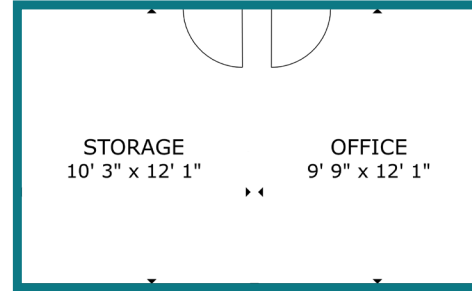


Property Facts

Available Space	± 1,514 sf approx. ± 346 sf non contiguous
Monthly Base Rent	\$2,480.00
Monthly Additional Rent (2024)	\$1,472.50 + HST est. • Including property taxes & operating costs, including ensuite utilities
Heating/Cooling	HVAC/Forced air - gas
Signage	Building directory
Parking	Ample free paved parking on site
Accessibility	Elevator serviced
Disclosure:	The Listing Broker is the Property Manager of the subject property

Floor Plans

- Suite 201 | ± 1,514 sf
- Suite 201A | ± 346 sf



Comments

Well located on the Northeast corner of Catarqui Woods Drive and Gardiners Road, in an established office and industrial node in Kingston's west end. Situated within a 3.5 km radius of two Highway 401 interchanges, Gardiners Road and Sydenham Road, providing quick and easy access. The space is located on the second floor with elevator access.

The property comprises of a variety of well-established tenants, including Kingston Health Sciences, Jensen Building Ltd., Royal LePage, SCI Logistics and Greer Galloway Engineering.

Zoning M1 - Business Park Zone

Permits for a broad range of uses including:

- offices
- call centres
- catering services
- contractor's yard¹
- laboratory
- light industrial use¹
- production studio
- research establishment
- retail store²
- training facility¹
- transportation depot¹
- warehouse¹
- workshop¹
- wholesale establishment