

PMS

Perishable Management Services, LLC

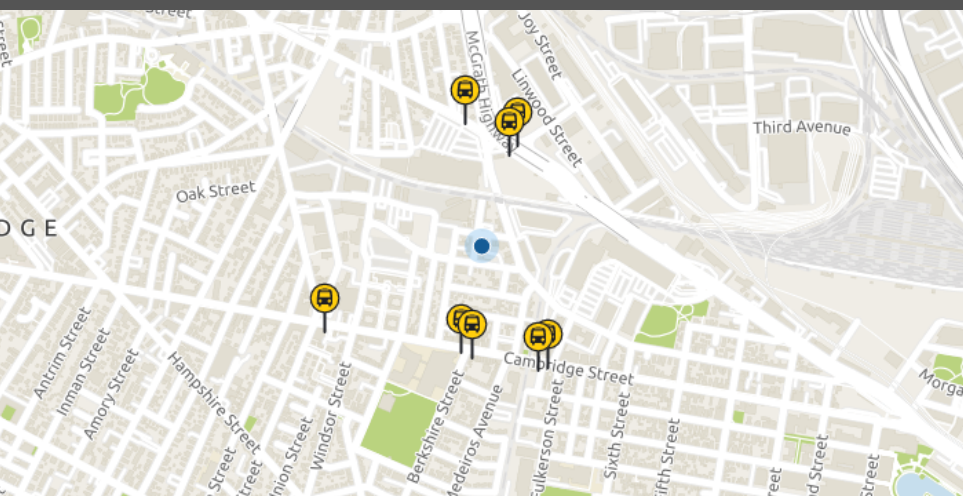
LAB, R&D, & TECHNOLOGY SPACE FOR LEASE



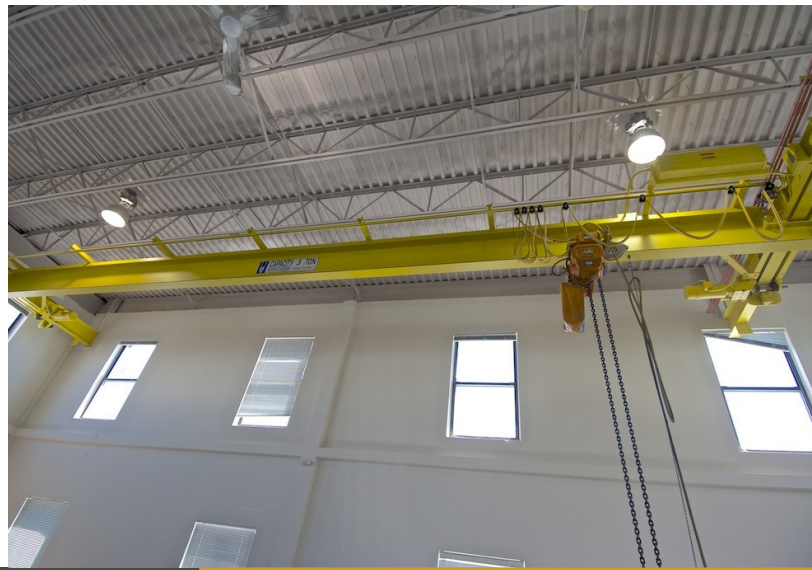
15 WARD ST, SOMERVILLE MA

Unit 1: 3,500 SF 1st Floor Lab/Flex Space - Corner space with Excellent visibility and a drive in door

Unit 4: 2,000 SF 1st Floor Office / Creative Space - previous uses include a brewery and an MIT robotics lab



- ✓ HEAVY POWER
- ✓ HEAVY FLOOR LOAD CAPACITY
- ✓ CRANES IN PLACE
- ✓ ASSIGNED, OFF-STREET PARKING
- ✓ EXCELLENT VISIBILITY
- ✓ FLOOR DRAINS
- ✓ MBTA ACCESSIBLE



Perishable Management Services, LLC

Joel B. Miller

Melissa Chaput

office: (617) 424-0040
 cell: (617) 840-1484
 joel@permanser.com

cell: (603) 591-5082
 melissa@permanser.com

P | M | S

MIT Robot Laboratory Space

73'-5"

