



# FOR LEASE

**4,000 SF ± BUILDING IDEAL FOR  
OFFICE, RETAIL OR RESTAURANT**

**📍 105 COUNTRY CLUB PKWY. (SUITE 200) | MAUMELLE, AR**

Information is deemed reliable but is not guaranteed. Agency Disclosure: RPM Group is the agent for the owner of the property described herein.

**MARK BINGMAN**

501.680.1707 | [WWW.RPMGROUP.COM](http://WWW.RPMGROUP.COM)

[MBINGMAN@RPMGROUP.COM](mailto:MBINGMAN@RPMGROUP.COM)





105 COUNTRY CLUB PKWY. (SUITE 200)  
MAUMELLE, AR 72113

FOR LEASE

# PROPERTY INFORMATION

Give your business a strategic advantage with this stand-alone 4,000 ± SF building located on the main road leading to The Country Club of Arkansas—a high-traffic corridor with strong visibility and steady daily activity. Currently built out as office space, the property's C-3 zoning offers exceptional flexibility for office, retail, restaurant, medical, or other commercial uses. This freestanding building provides prominent signage opportunities along Country Club Parkway, paired with ample on-site parking and an accessible layout well-suited for clients, customers, or staff.

Just off Maumelle Boulevard, you're minutes from restaurants, banks, shopping, and essential services—making this an ideal location for a business seeking convenience and exposure in a thriving area.

> LEASE RATE	\$16/SF/YR MODIFIED GROSS	> TOTAL SF	4,000 SF ±
--------------	------------------------------	------------	------------



Information is deemed reliable but is not guaranteed. Agency Disclosure: RPM Group is the agent for the owner of the property described herein.

MARK BINGMAN

501.680.1707 | WWW.RPMGROUP.COM  
MBINGMAN@RPMGROUP.COM





105 COUNTRY CLUB PKWY. (SUITE 200)  
MAUMELLE, AR 72113

FOR LEASE



Information is deemed reliable but is not guaranteed. Agency Disclosure: RPM Group is the agent for the owner of the property described herein.

**MARK BINGMAN**  
501.680.1707 | [WWW.RPMGROUP.COM](http://WWW.RPMGROUP.COM)  
[MBINGMAN@RPMGROUP.COM](mailto:MBINGMAN@RPMGROUP.COM)





105 COUNTRY CLUB PKWY. (SUITE 200)  
MAUMELLE, AR 72113

FOR LEASE



Information is deemed reliable but is not guaranteed. Agency Disclosure: RPM Group is the agent for the owner of the property described herein.

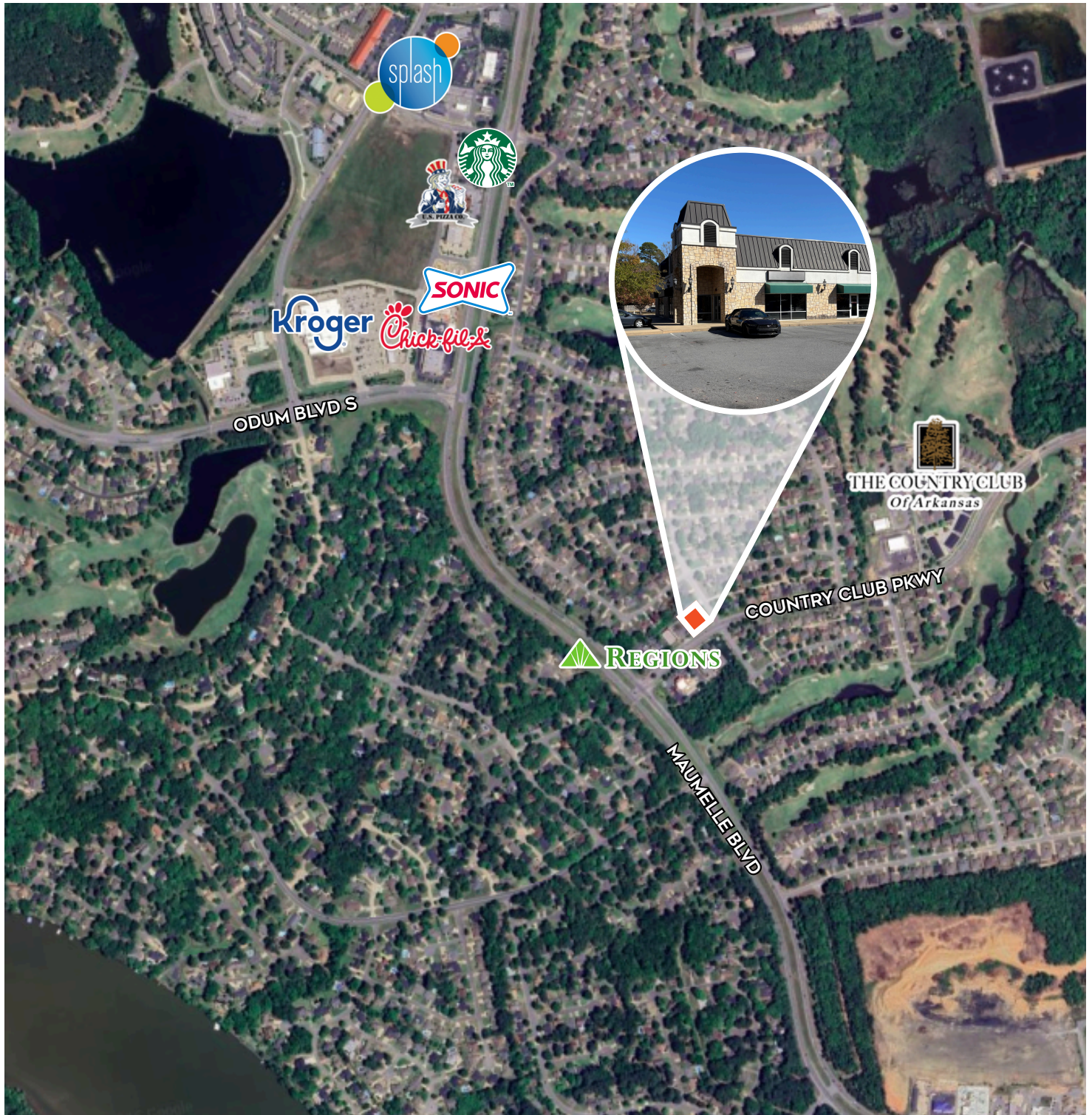
**MARK BINGMAN**  
501.680.1707 | [WWW.RPMGROUP.COM](http://WWW.RPMGROUP.COM)  
[MBINGMAN@RPMGROUP.COM](mailto:MBINGMAN@RPMGROUP.COM)





105 COUNTRY CLUB PKWY. (SUITE 200)  
MAUMELLE, AR 72113

FOR LEASE



Information is deemed reliable but is not guaranteed. Agency Disclosure: RPM Group is the agent for the owner of the property described herein.

**MARK BINGMAN**  
501.680.1707 | [WWW.RPMGROUP.COM](http://WWW.RPMGROUP.COM)  
[MBINGMAN@RPMGROUP.COM](mailto:MBINGMAN@RPMGROUP.COM)

