

**FOR LEASE**

226,000 SF  
Office Building



Accelerating success.



4700 N Hanley Road  
St. Louis, MO 63134

**CONTACT US**

**Dennis DeSantis, SIOR, CRE**  
Executive Vice President  
+1 314 584 6253  
[dennis.desantis@colliers.com](mailto:dennis.desantis@colliers.com)

**Carrie Herrmann**  
Senior Vice President  
+1 314 584 6273  
[carrie.herrmann@colliers.com](mailto:carrie.herrmann@colliers.com)

# Property Overview

Address:	4700 N Hanley Road St. Louis, MO 63134
Building Size:	226,000 GSF 219,644 RBA
Lot Size:	34.48 acres
Stories:	Two
Use:	Former corporate headquarters
Year Built:	2013
Parking Ratio:	9.23/1,000 SF
Ceiling Height:	Up to 16'
Loading:	Two docks
Accessibility:	Great access to Interstates 70 and 170 Minutes away from St. Louis Lambert International Airport

## LEASE RATE:

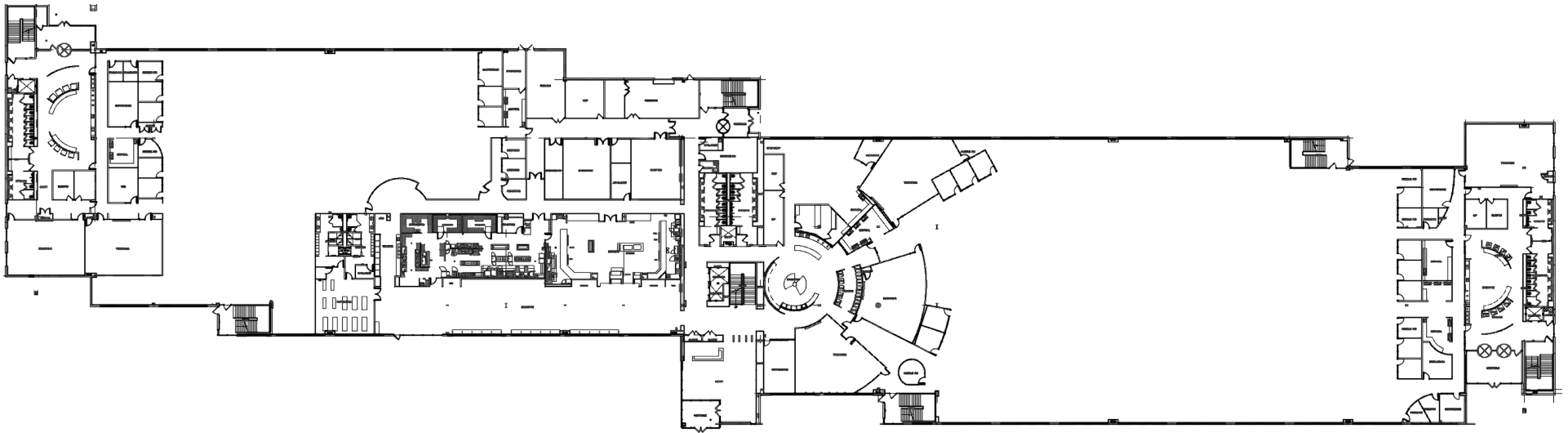
**\$9.75** PSF, NET



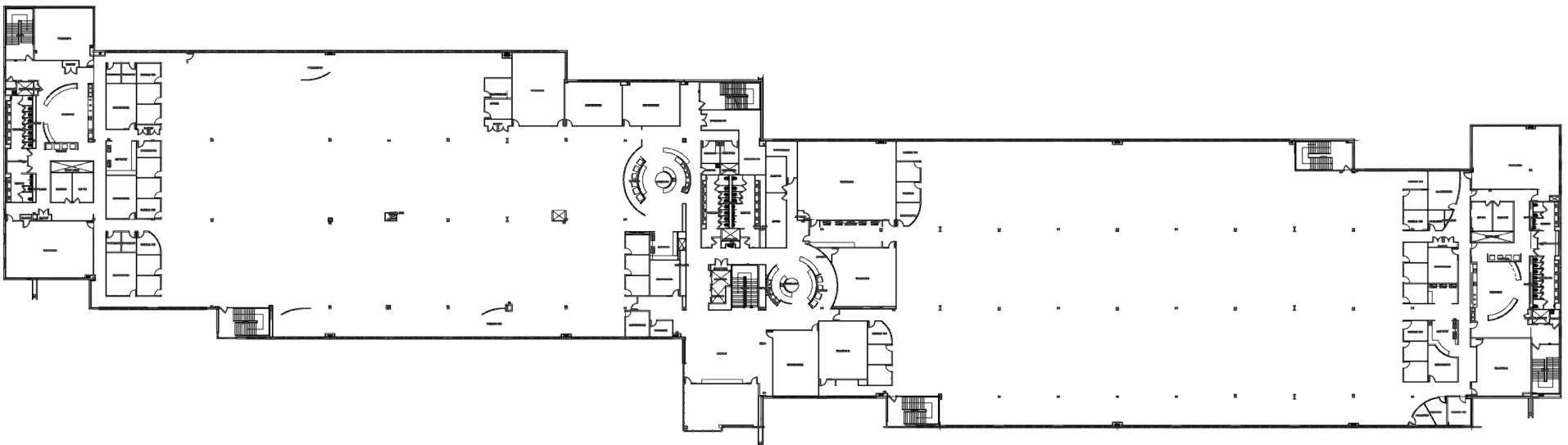
# Floor Plans

Click to view  tour

## First Floor



## Second Floor





# Property Photos

Work Area



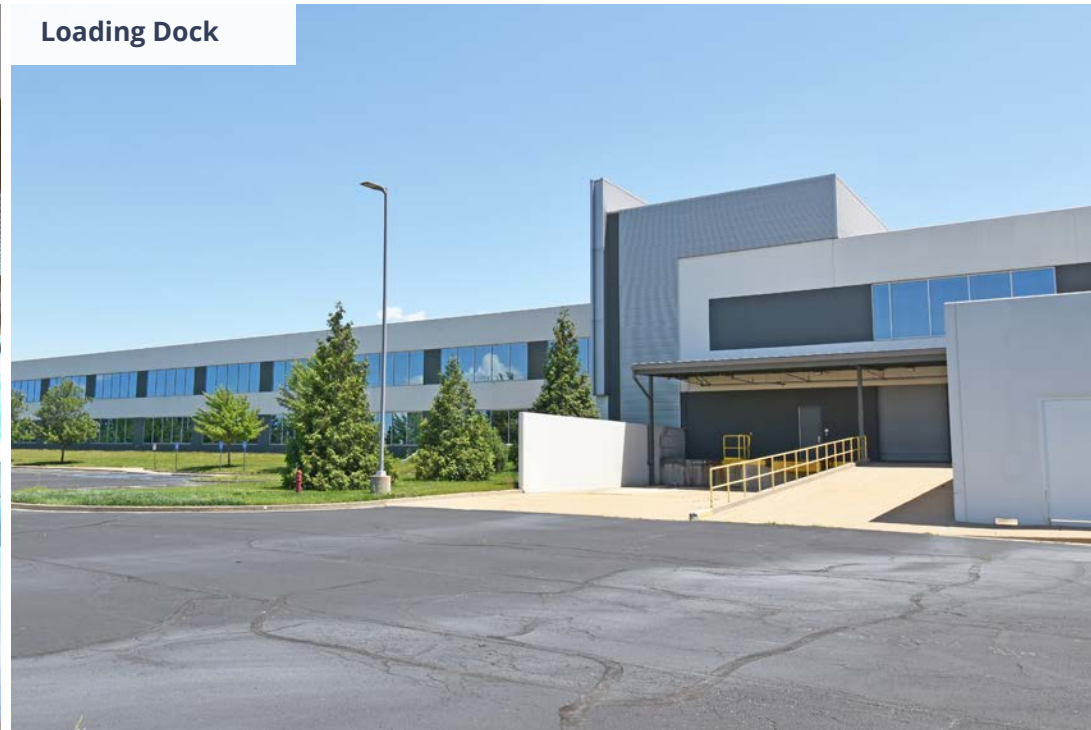
Break Area



Cafe



Loading Dock





# Property Photos

Front Parking



Back Parking





# LOCATION SUMMARY

4700 N Hanley is strategically located in NorthPark, a 550-acre business park, and home to many large corporations including Express Scripts, Schnucks, Amazon and Pepsi. It offers convenient access to Interstates 70 and 170 and is in close proximity to St. Louis Lambert International Airport.





**FOR LEASE**

---

**4700 N Hanley Road**  
**St. Louis, MO 63134**

**CONTACT US**

**Dennis DeSantis, SIOR, CRE**  
Executive Vice President  
+1 314 584 6253  
dennis.desantis@colliers.com

**Carrie Herrmann**  
Senior Vice President  
+1 314 584 6273  
carrie.herrmann@colliers.com

**Colliers**  
101 S Hanley Road, Suite 1400  
St. Louis, MO 63105  
+1 314 863 4447  
colliers.com/stlouis

