



Holly Ridge East Site

LA Hwy 183
Rayville, La 71269

SITE INFORMATION

ACRES AVAILABLE:

256 Acres

PROPERTY TYPE:

Industrial with Rail Access

TERRAIN:

Flat

SUB DIVIDABLE:

Yes

PRIOR/CURRENT USE:

Agricultural

OWNER:

Richland Seed and George B. Franklin & Sons

NEAREST MSA:

Monroe

Population: 177,782

Distance: 18 miles

Alexandria

Population: 154,441

Distance: 65 miles

COORDINATES:

32.460674, -91.620913

UTILITIES

ELECTRICITY:

Entergy

NATURAL GAS:

Atmos

WATER:

River Road

SEWER:

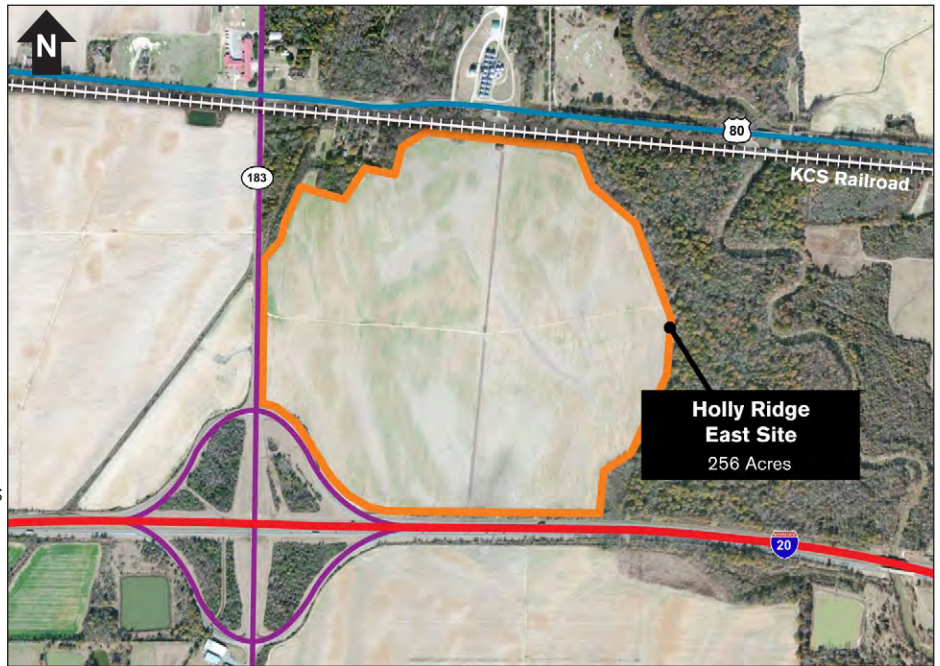
City of Delhi

TELECOM:

AT&T

FIBER OPTIC:

AT&T



TRANSPORTATION LOGISTICS

INTERSTATE:

I-20

Distance: Adjacent to Site

HIGHWAY:

LA-183

Distance: Adjacent to Site

RAIL:

Kansas City Southern Railroad

Distance: Adjacent to Site

AIRPORT:

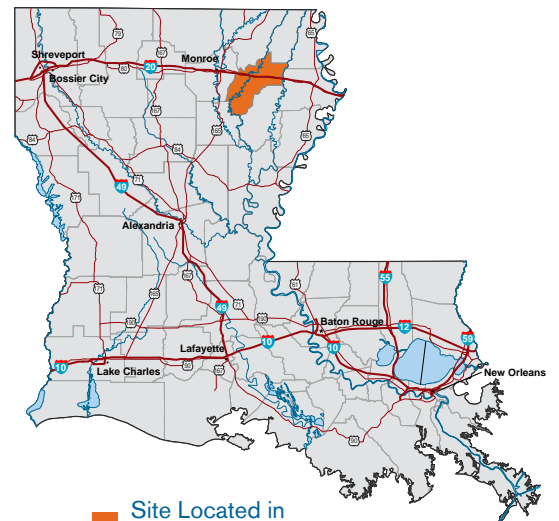
Monroe Regional Airport (MLU)

Distance: 27 miles

PORT:

Madison Parish Port

Distance: 46 miles



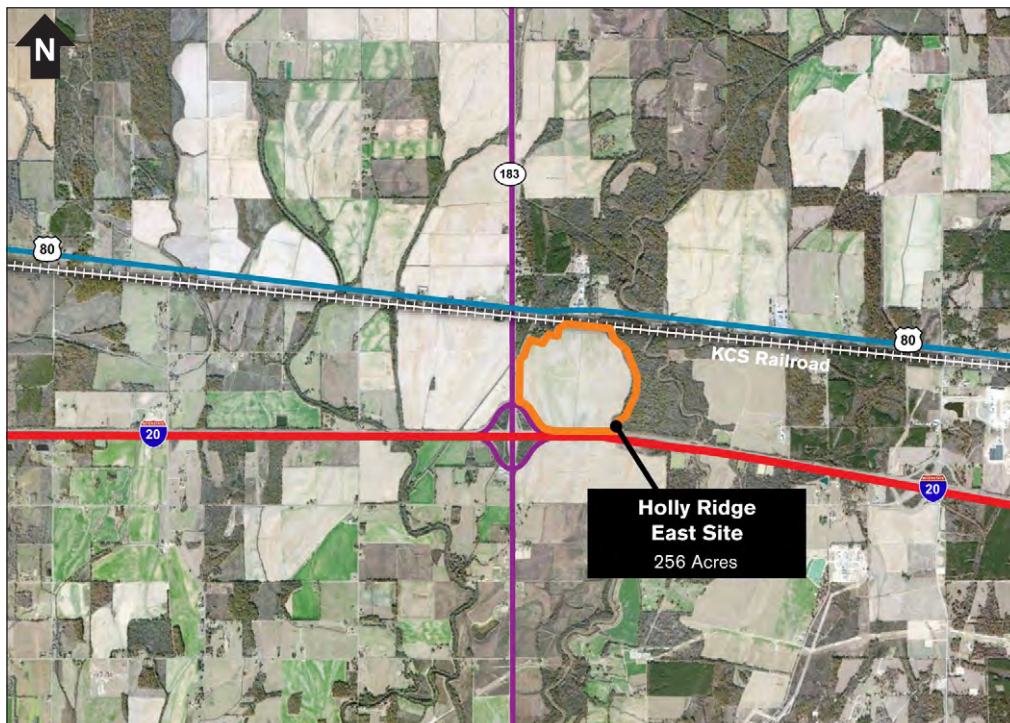
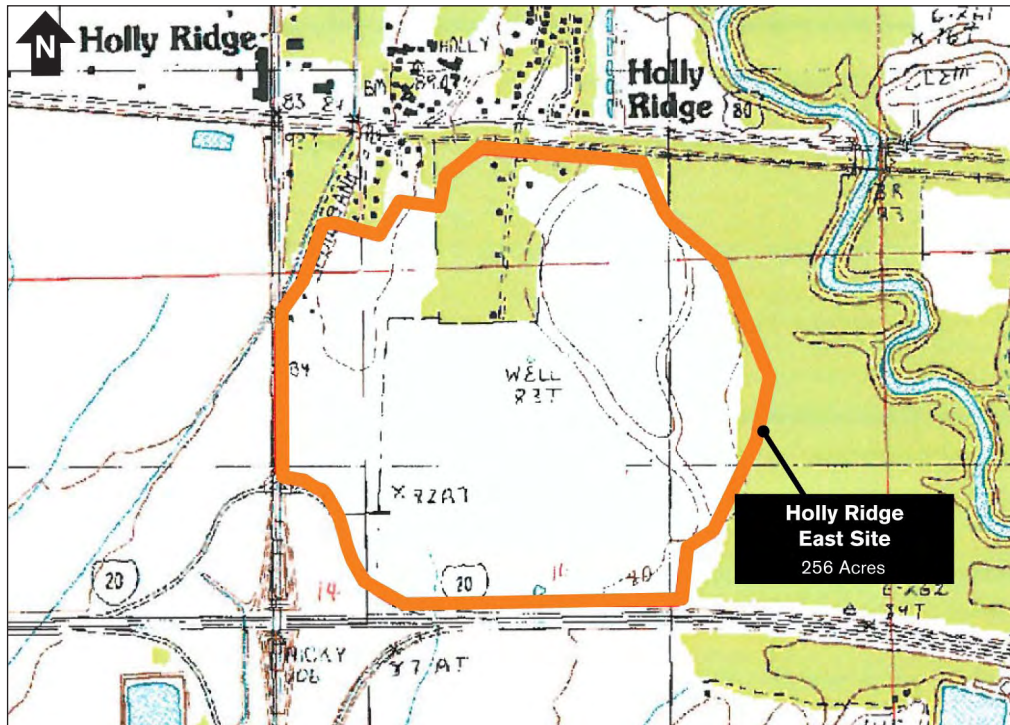
Site Located in Richland Parish

FIND OUT MORE: OpportunityLouisiana.com
800.450.8115



Holly Ridge East Site

LA Hwy 183
Rayville, La 71269



FIND OUT MORE: OpportunityLouisiana.com
800.450.8115