

**AVISON  
YOUNG**



**Retail / Medical For Lease**  
**New CRU Development**  
3725 56 Street, Wetaskiwin, AB



## New Retail Building at Wetaskiwin Mall

Wetaskiwin Mall includes major retailers such as JYSK, The Brick, Sport Chek, Giant Tiger, Dollar Tree, and Warehouse One.

**JOIN:** Firehouse Subs and Church's Chicken!

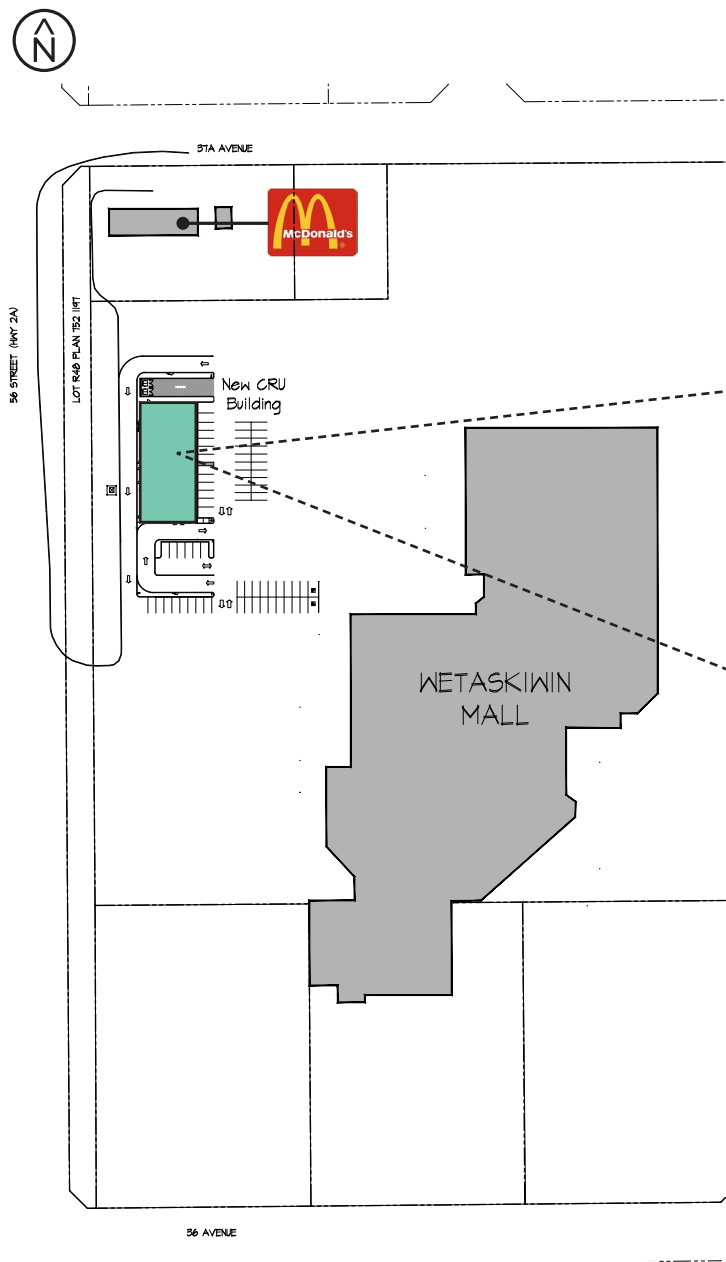


**Get more  
information**

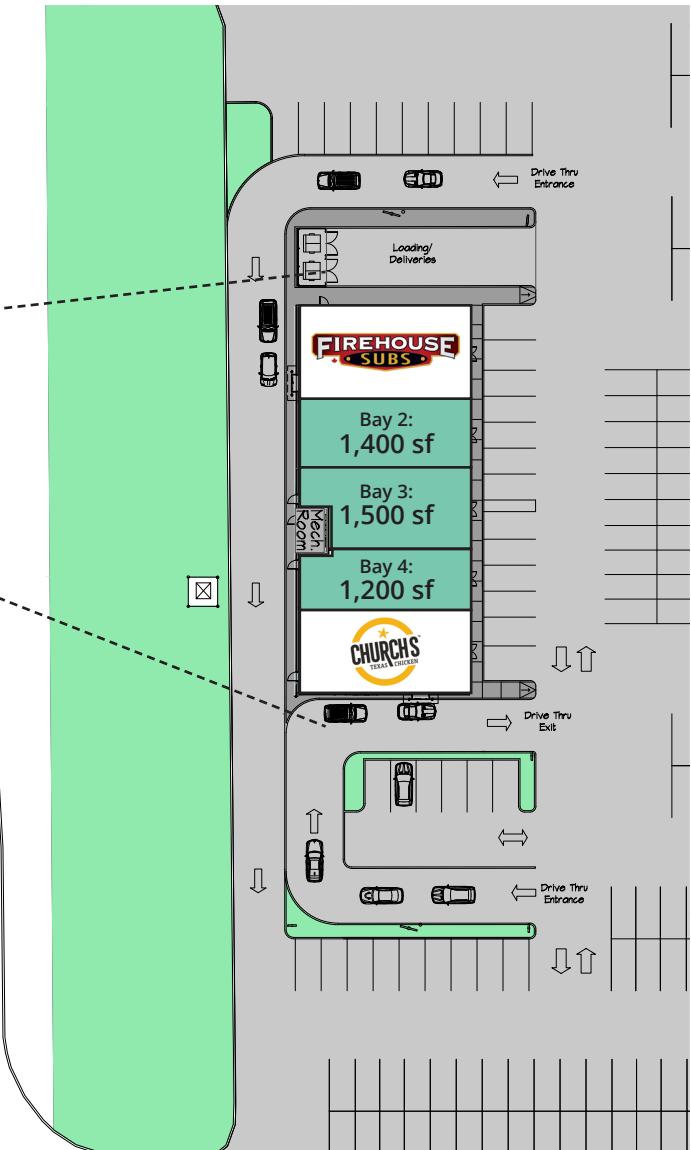
**Ben Volorney**  
Principal  
780.909.5810  
ben.volorney@avisonyoung.com

**Paul Raimundo**  
Principal  
780.702.0697  
paul.raimundo@avisonyoung.com

[avisonyoung.com](http://avisonyoung.com)



Proposed CRU Development



# Development Details

Timing: Targeted possession Q4 2025

Bay Sizes: Starting at 1,200 sf

Basic Rent: Market

Additional Rent (2025): Exterior CRU: \$10.38 psf  
\*Includes electricity, gas & water

Location Overview

Wetaskiwin Mall, Wetaskiwin, AB



**\$90,000**

Medium Family Income  
(Statistic Canada 2020)



**93,637**

Secondary Trading Area Population  
(wetaskiwin.ca)



**15,110**

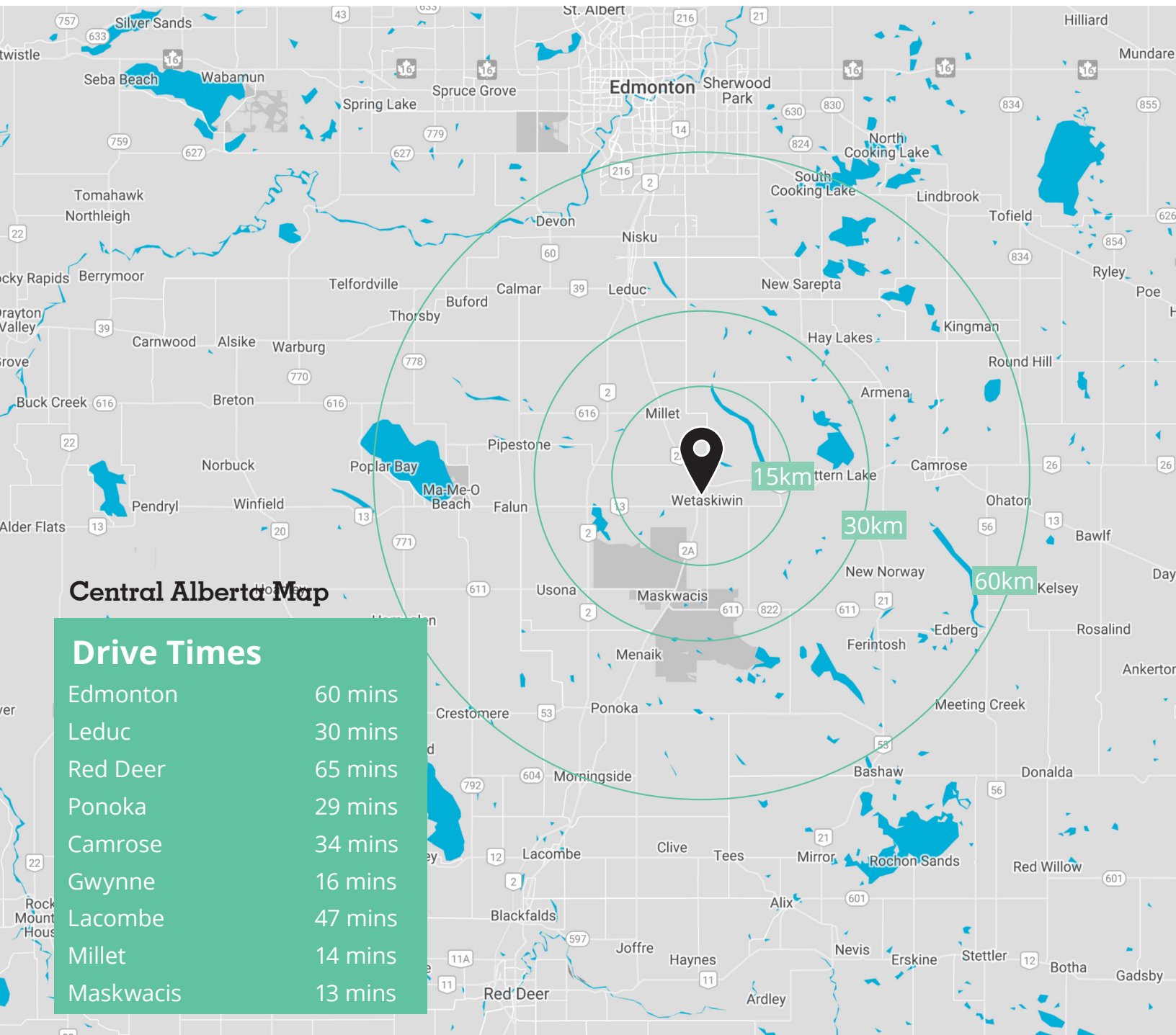
Annual Average Daily Traffic Count  
Along Highway 2A (2021)



Available: 3,985 sf

## Retail / Medical For Lease

Wetaskiwin Mall, Wetaskiwin, AB



### Ben Volorney

Principal

780.909.5810

[ben.volorney@avisonyoung.com](mailto:ben.volorney@avisonyoung.com)

### Paul Raimundo

Principal

780.702.0697

[paul.raimundo@avisonyoung.com](mailto:paul.raimundo@avisonyoung.com)

**AVISON  
YOUNG**

**Avenue Living**