



Colliers

Accelerating success.



Industrial For Lease

Stand Alone Industrial Building

215 S Mountain Lands Dr. Orem | UT

Property Information

- 10,000 Total SF Available
- 1 Dock High Door
- 3 Ground Level Doors
- 3 Phase Power
- Freeway Visibility
- Excellent Location
- Office Space
- Available Immediately
- **Lease Rate: \$1.00 SF/NNN**

Contact:

James Yeates

Vice President
+1 801 995 0049
james.yeates@colliers.com

Justin Irvine

Vice President
+1 801 400 4260
justin.irvine@colliers.com

Colliers

2100 Pleasant Grove Blvd., Suite 200
Pleasant Grove, UT 84062
Main: +1 801 947 8300
colliers.com

Accelerating success.

215 S Mountain Lands Dr. | For Lease

Photo Gallery



Lobby



Warehouse Floor



Breakroom



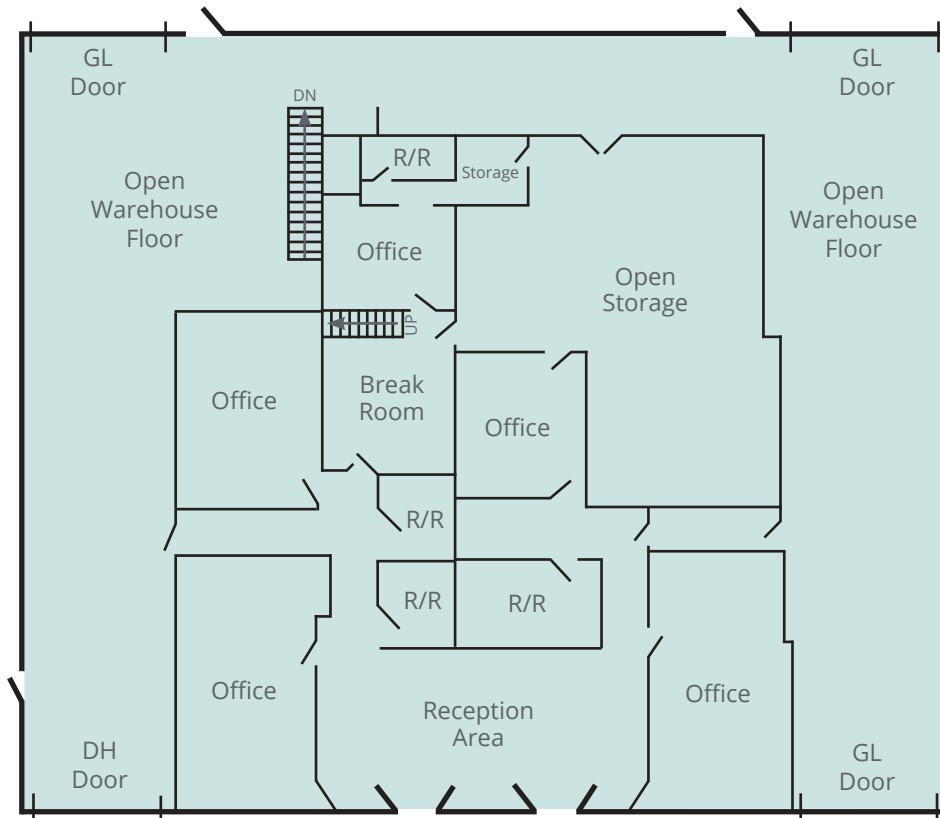
Warehouse Floor



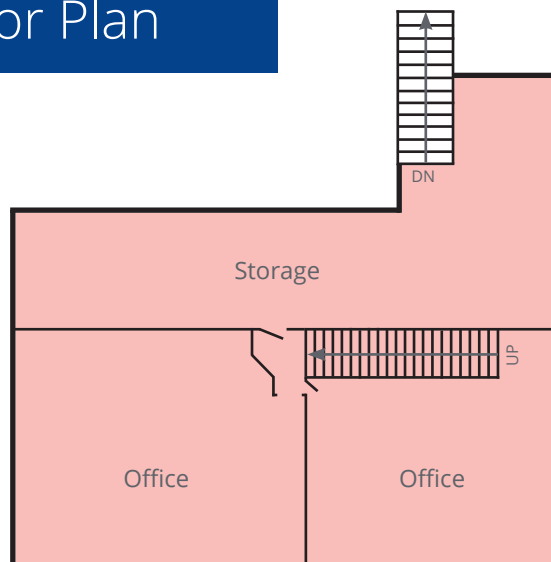
Office

Floorplan

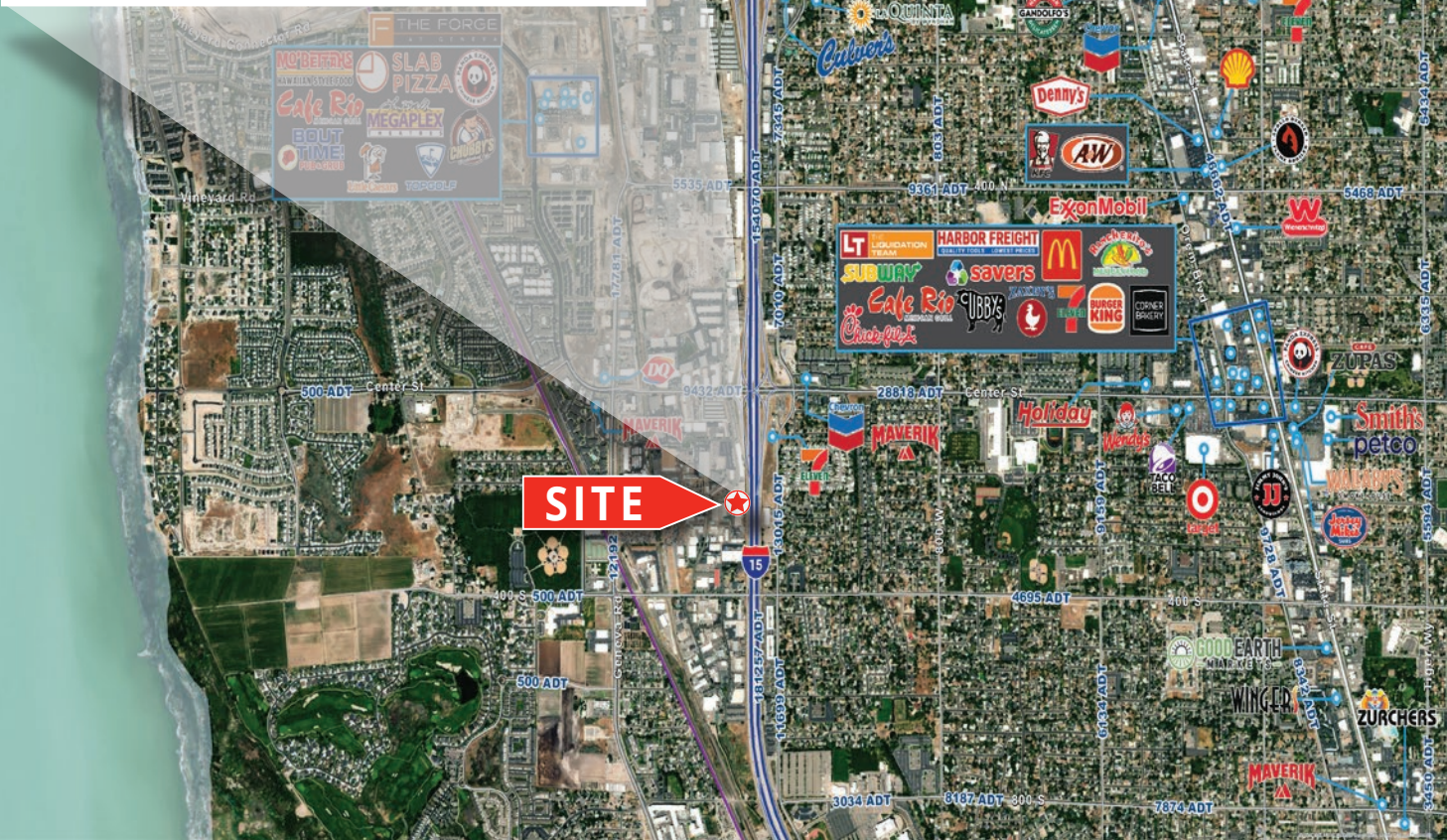
Main Level Floor Plan



Upper Level Floor Plan



Utah Lake



Colliers
2100 Pleasant Grove Blvd., Suite 200
Pleasant Grove, UT 84062
Main: +1 801 947 8300
colliers.com

James Yeates
Vice President
+1 801 995 0049
james.yeates@colliers.com

Justin Irvine
Vice President
+1 801 400 4260
justin.irvine@colliers.com

This document has been prepared by Colliers International for advertising and general information only. Colliers International makes no guarantees, representations or warranties of any kind, expressed or implied, regarding the information including, but not limited to, warranties of content, accuracy and reliability. Any interested party should undertake their own inquiries as to the accuracy of the information. Colliers International excludes unequivocally all inferred or implied terms, conditions and warranties arising out of this document and excludes all liability for loss and damages arising there from. This publication is the copyrighted property of Colliers International and/or its licensor(s). ©2024. All rights reserved.