

# LOS ANGELES CORPORATE CENTER

1200 Corporate Center Drive | Office Space For Lease



MONTEREY PARK, CALIFORNIA

 Kidder  
Mathews

**FOR LEASE**

# Los Angeles Corporate Center

1200 CORPORATE CENTER DRIVE | MONTEREY PARK, CALIFORNIA

## AVAILABILITIES

Suite	RSF	Rate	Description
100	26,619	\$2.75/RSF per month, MG	Full ground floor opportunity.
300	11,643	\$2.75/RSF per month, MG	8 private window offices, 2 conference/meeting rooms, 1 break room, storage and open work area.



**LINDA LEE**  
626.873.1802  
linda.lee@kidder.com  
LIC N° 01278768

**BILL BOYD**  
626.873.1801  
bill.boyd@kidder.com  
LIC N° 00816177

**SCOTT UNGER**  
626.873.1803  
scott.unger@kidder.com  
LIC N° 01855517

**KIDDER.COM**

This information supplied herein is from sources we deem reliable. It is provided without any representation, warranty, or guarantee, expressed or implied as to its accuracy. Prospective Buyer or Tenant should conduct an independent investigation and verification of all matters deemed to be material, including, but not limited to, statements of income and expenses. Consult your attorney, accountant, or other professional advisor.

**PROFESSIONAL** ownership and management - Omnicor Capital

**CLASS A** office space

**LARGE** floor plates

**CORPORATE** identity

**EV** charging stations

**DIRECT** access to the 10, 710, and 60 freeways

**EASY** access to mass transit

**CENTRALLY** located to numerous restaurants and retail amenities

**ENERGY STAR** certified

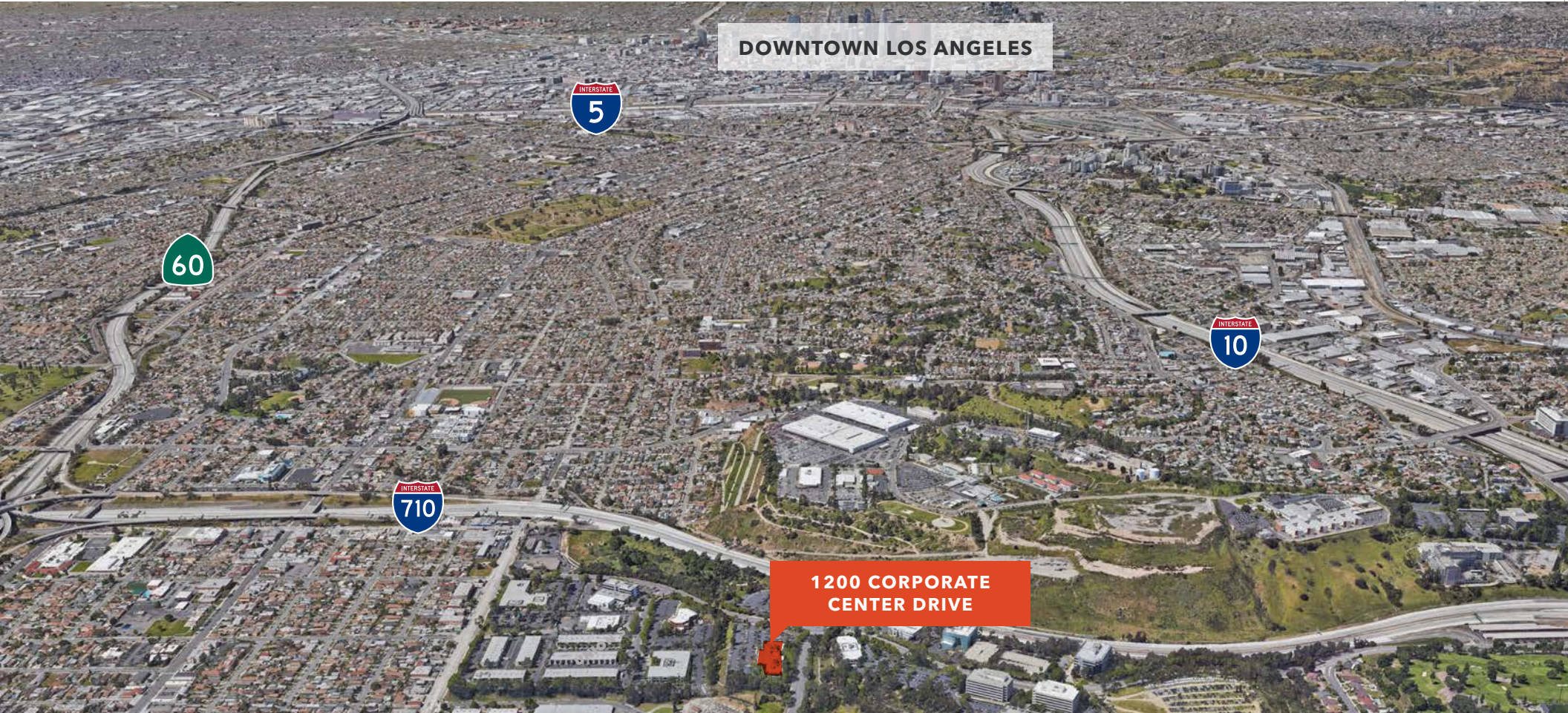
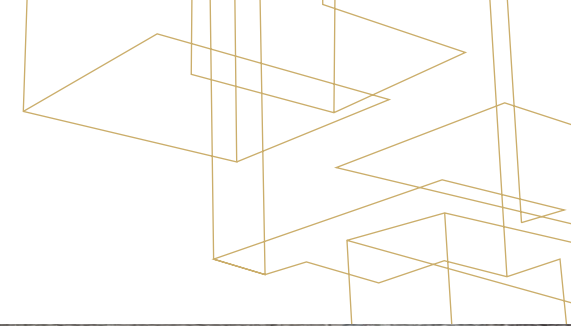
**4/1,000** free parking



**FOR LEASE**

# Los Angeles Corporate Center

1200 CORPORATE CENTER DRIVE | MONTEREY PARK, CALIFORNIA



**LINDA LEE**  
626.873.1802  
linda.lee@kidder.com  
LIC N° 01278768

**BILL BOYD**  
626.873.1801  
bill.boyd@kidder.com  
LIC N° 00816177

**SCOTT UNGER**  
626.873.1803  
scott.unger@kidder.com  
LIC N° 01855517

**KIDDER.COM**

This information supplied herein is from sources we deem reliable. It is provided without any representation, warranty, or guarantee, expressed or implied as to its accuracy. Prospective Buyer or Tenant should conduct an independent investigation and verification of all matters deemed to be material, including, but not limited to, statements of income and expenses. Consult your attorney, accountant, or other professional advisor.



FOR LEASE

# Los Angeles Corporate Center

1200 CORPORATE CENTER DRIVE | MONTEREY PARK, CALIFORNIA



LINDA LEE  
626.873.1802  
linda.lee@kidder.com  
LIC N° 01278768

BILL BOYD  
626.873.1801  
bill.boyd@kidder.com  
LIC N° 00816177

SCOTT UNGER  
626.873.1803  
scott.unger@kidder.com  
LIC N° 01855517

KIDDER.COM

This information supplied herein is from sources we deem reliable. It is provided without any representation, warranty, or guarantee, expressed or implied as to its accuracy. Prospective Buyer or Tenant should conduct an independent investigation and verification of all matters deemed to be material, including, but not limited to, statements of income and expenses. Consult your attorney, accountant, or other professional advisor.



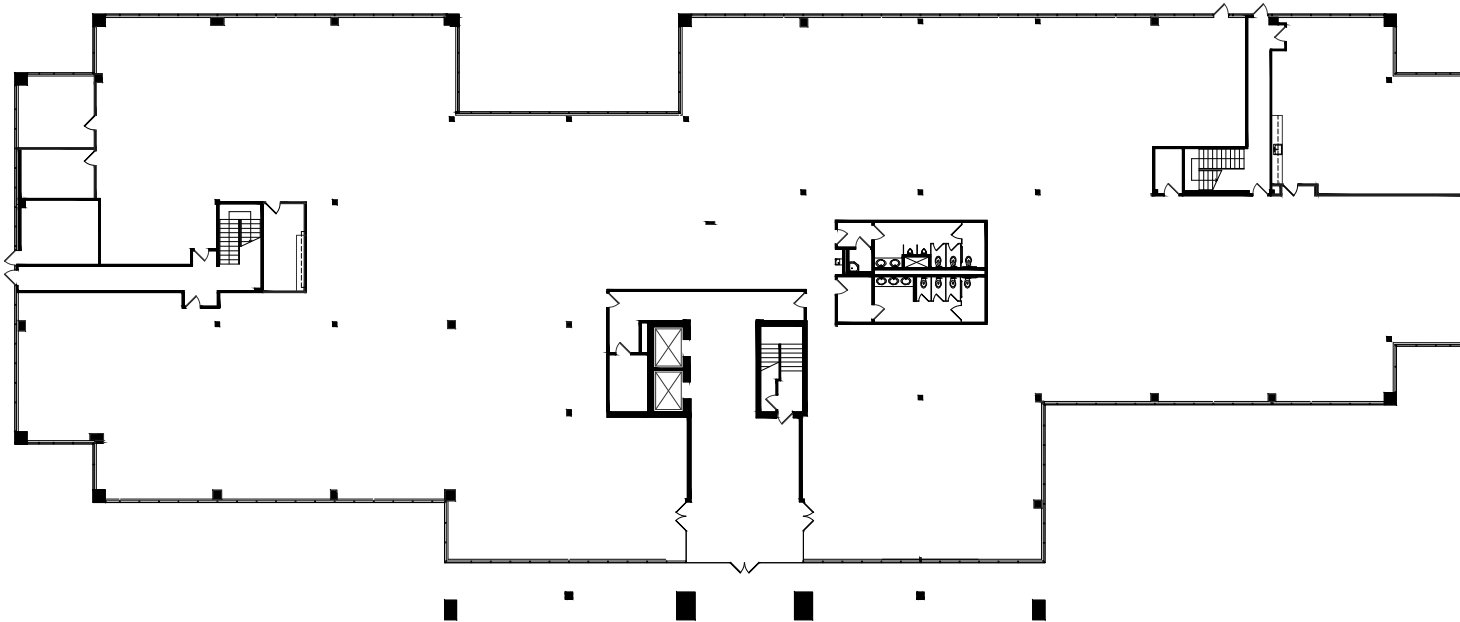
**FOR LEASE**

# Los Angeles Corporate Center

1200 CORPORATE CENTER DRIVE | MONTEREY PARK, CALIFORNIA

## Suite 100

**FULL** ground floor opportunity.



**26,619**

SQUARE FEET

**\$2.75/RSF**

PER MONTH MG

**LINDA LEE**

626.873.1802

[linda.lee@kidder.com](mailto:linda.lee@kidder.com)

LIC N° 01278768

**BILL BOYD**

626.873.1801

[bill.boyd@kidder.com](mailto:bill.boyd@kidder.com)

LIC N° 00816177

**SCOTT UNGER**

626.873.1803

[scott.unger@kidder.com](mailto:scott.unger@kidder.com)

LIC N° 01855517

**KIDDER.COM**

This information supplied herein is from sources we deem reliable. It is provided without any representation, warranty, or guarantee, expressed or implied as to its accuracy. Prospective Buyer or Tenant should conduct an independent investigation and verification of all matters deemed to be material, including, but not limited to, statements of income and expenses. Consult your attorney, accountant, or other professional advisor.



**FOR LEASE**

# Los Angeles Corporate Center

1200 CORPORATE CENTER DRIVE | MONTEREY PARK, CALIFORNIA

## Suite 100

**CONCEPTUAL** demising plan



**26,619**

SQUARE FEET

**\$2.75/RSF**

PER MONTH MG

**LINDA LEE**

626.873.1802

[linda.lee@kidder.com](mailto:linda.lee@kidder.com)

LIC N° 01278768

**BILL BOYD**

626.873.1801

[bill.boyd@kidder.com](mailto:bill.boyd@kidder.com)

LIC N° 00816177

**SCOTT UNGER**

626.873.1803

[scott.unger@kidder.com](mailto:scott.unger@kidder.com)

LIC N° 01855517

**KIDDER.COM**

This information supplied herein is from sources we deem reliable. It is provided without any representation, warranty, or guarantee, expressed or implied as to its accuracy. Prospective Buyer or Tenant should conduct an independent investigation and verification of all matters deemed to be material, including, but not limited to, statements of income and expenses. Consult your attorney, accountant, or other professional advisor.



**FOR LEASE**

# Los Angeles Corporate Center

1200 CORPORATE CENTER DRIVE | MONTEREY PARK, CALIFORNIA

## Suite 300

**8 PRIVATE** window offices, 2 conference/meeting rooms, 1 break room, storage and open work area.



**11,643**

**SQUARE FEET**

**\$2.75/RSF**

**PER MONTH MG**

**LINDA LEE**

626.873.1802

[linda.lee@kidder.com](mailto:linda.lee@kidder.com)

LIC N° 01278768

**BILL BOYD**

626.873.1801

[bill.boyd@kidder.com](mailto:bill.boyd@kidder.com)

LIC N° 00816177

**SCOTT UNGER**

626.873.1803

[scott.unger@kidder.com](mailto:scott.unger@kidder.com)

LIC N° 01855517

**KIDDER.COM**

This information supplied herein is from sources we deem reliable. It is provided without any representation, warranty, or guarantee, expressed or implied as to its accuracy. Prospective Buyer or Tenant should conduct an independent investigation and verification of all matters deemed to be material, including, but not limited to, statements of income and expenses. Consult your attorney, accountant, or other professional advisor.

