

# Priest Bridge Shopping Centre

2201 DEFENSE HIGHWAY | CROFTON, MD



Retail + Office Space Available  
**FOR LEASE**



[www.RossoCRE.com](http://www.RossoCRE.com)

MOVING COMMERCIAL REAL ESTATE GOALS **FORWARD.**

# Priest Bridge Shopping Centre

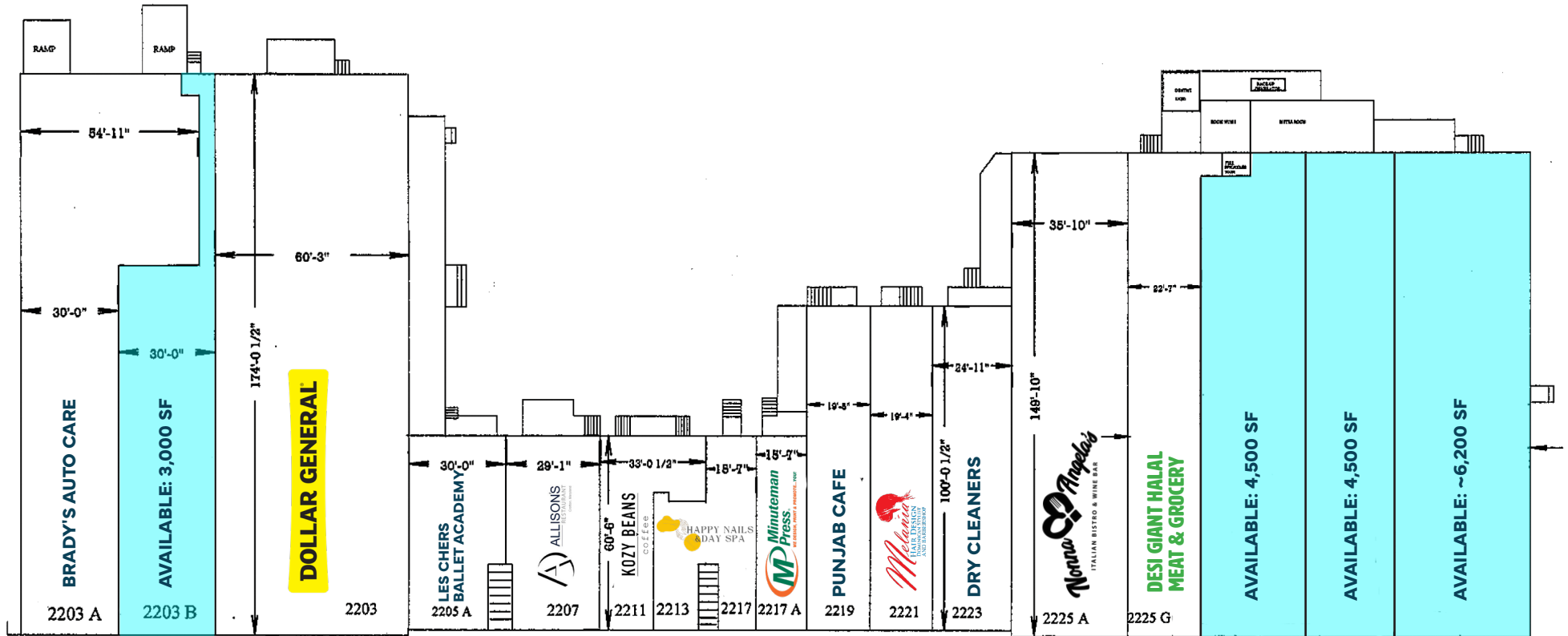
2201 DEFENSE HIGHWAY | CROFTON, MD

## PROPERTY HIGHLIGHTS:

- 3,000 SF - 15,200 SF of RETAIL space available for lease.
- 750 SF - 9,700 +/- SF of OFFICE space available for lease.
- Opportunity for an Anchor retail tenant.
- Priest Bridge Center is prominently located at the intersection of Crain Hwy (MD Route-3) and Defense Hwy (MD-450) in Crofton, providing excellent access to both Bowie and Gambrills.
- Co-Tenants include Dollar General, Brady's Auto Care, Nonna Angela's Italian Bistro, and Kozy Beans Coffee, among others.
- Please inquire for pricing.



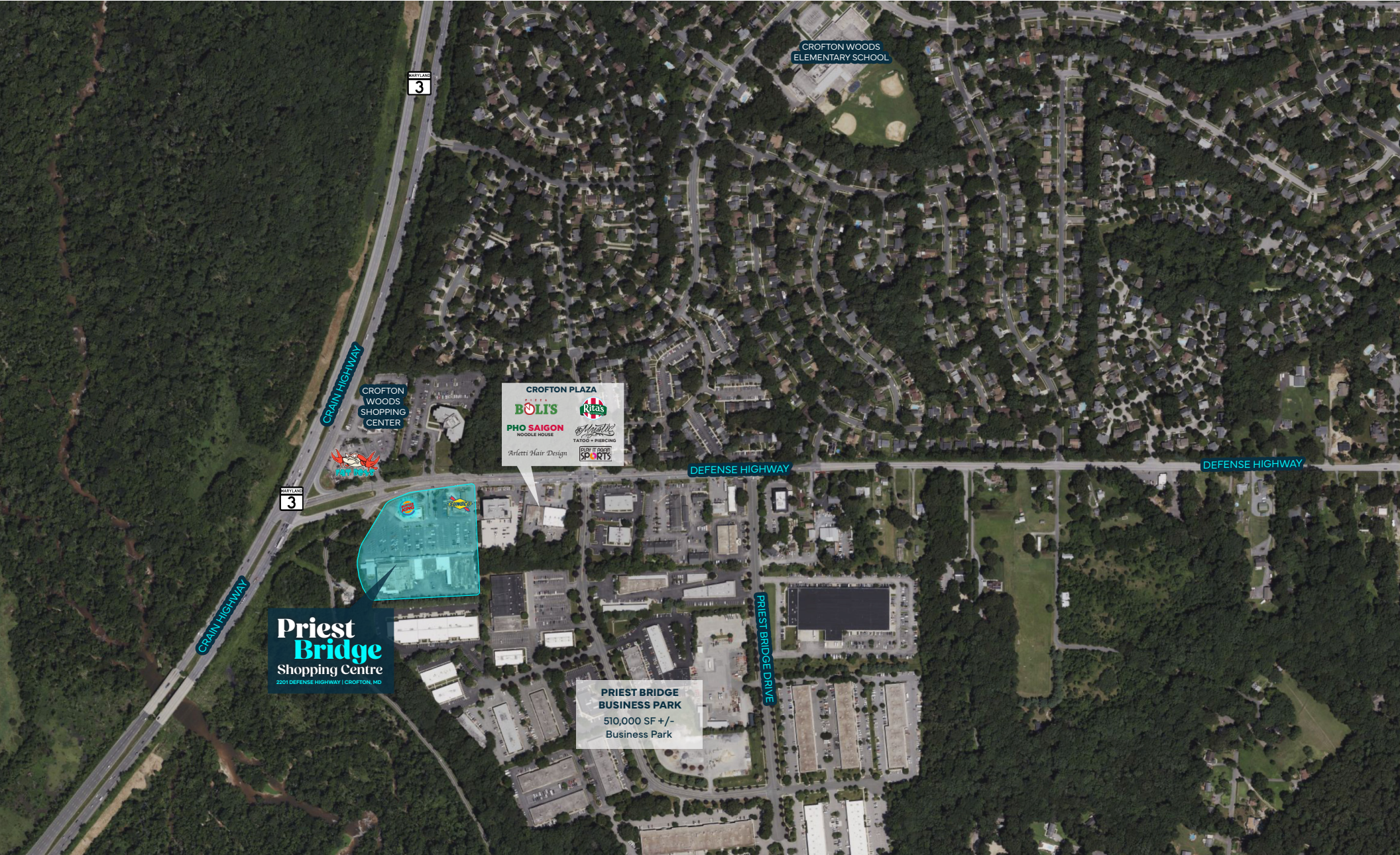
# PROPERTY OVERVIEW



While we have no reason to doubt the accuracy of any of the information supplied, we cannot, and do not, guarantee its accuracy. All information should be independently verified prior to a purchase or lease of the property. We are not responsible for errors, omissions, misuse, or misinterpretation of information contained herein and make no warranty of any kind, express or implied, with respect to the property or any other matters.

MOVING COMMERCIAL REAL ESTATE GOALS **FORWARD.**

# LOCATION OVERVIEW



**Priest Bridge**  
Shopping Centre  
2201 DEFENSE HIGHWAY | CROFTON, MD

**PRIEST BRIDGE BUSINESS PARK**  
510,000 SF +/-  
Business Park

While we have no reason to doubt the accuracy of any of the information supplied, we cannot, and do not, guarantee its accuracy. All information should be independently verified prior to a purchase or lease of the property. We are not responsible for errors, omissions, misuse, or misinterpretation of information contained herein and make no warranty of any kind, express or implied, with respect to the property or any other matters.

# Priest Bridge Shopping Centre

2201 DEFENSE HIGHWAY | CROFTON, MD

**Ross Westholm**

ross@rossocre.com

C | 443.336.9855

**Ryan J. Brant**

rbrant@rossocre.com

C | 301.768.2710

**John Rosso** SIOR

john@rossocre.com

C | 410.802.1909



One Annapolis Street | Suite 101 | Annapolis, MD 21401 | [www.RossoCRE.com](http://www.RossoCRE.com)

While we have no reason to doubt the accuracy of any of the information supplied, we cannot, and do not, guarantee its accuracy. All information should be independently verified prior to a purchase or lease of the property. We are not responsible for errors, omissions, misuse, or misinterpretation of information contained herein and make no warranty of any kind, express or implied, with respect to the property or any other matters.